



phil&teds®

alpha™



protect™


ISOFIX CLASS E

The ISOFIX CLASS E complies with requirements applicable in market of sale. For rights & remedies, and important online product registration please visit:

www.philandteds.com/register

www.mountainbuggy.com/register

 philandteds.com

 mountainbuggy.com

Congratulations on choosing your new car seat isofix base!



Product Care



Safety Warnings



Features



Instructions



GENERAL INSTRUCTIONS

Group 0+

Suitable for birth to 13kg.

ISOFIX CLASS E

**THIS DOCUMENT CONTAINS
IMPORTANT INFORMATION AND MUST
BE KEPT WITH THE SEAT FOR FUTURE
REFERENCE.**

This product should be used rearward facing until the child is too large for the seat or exceeds 13kgs.

This product should never be used forward facing.

CLEANING & CARING

Check your ISOFIX Base for cuts & bruises. If your product is damaged in any way, or you're not sure how to use it, please consult our web support from where you can access a local customer care team.

Caring for your ISOFIX Base

Unlike children, your ISOFIX Base likes to stay clean.

Cleaning:

- Wipe down with warm water.
- Dry thoroughly before storage.
- Store in a well ventilated space, away from direct sunlight which could damage or fade your product.
- Store in a safe place when it is not being used. Avoid placing heavy objects on top of it.
- DO NOT allow to come into contact with corrosive substances e.g. battery acid.

The correct use and maintenance of your ISOFIX Base will ensure it gives long and trouble free use. When somebody else is using your ISOFIX Base, ensure that they also know how to use it and especially the correct way to adjust it. The safety of your child is your responsibility.



IMPORTANT

Please read thoroughly before commencing installation as an incorrect installation could be dangerous.

1. This is a "Semi-Universal" ISOFIX BASE CHILD RESTRAINT SYSTEM, it is approved to ECE regulation 44.04. Please note that the ISOFIX base is not suitable for all types of cars and is designed as "Semi-universal" and therefore suitable for installation on the seats of certain cars as stated on the car fitting list.
2. If in doubt, consult either phil&teds or the retailer.

Extreme Hazard

- Do not use in passenger seats equipped with airbags.



WARNINGS

- PLEASE READ THOROUGHLY BEFORE COMMENCING INSTALLATION AS INCORRECT INSTALLATION COULD BE DANGEROUS.
- THIS ISOFIX BASE SHOULD NOT UNDER ANY CIRCUMSTANCES BE USED ON A PASSENGER SEAT EQUIPPED WITH AN AIRBAG.
- The Isofix base is only suitable for installation on the seats of certain cars – refer to the car's fitting list.
- Never buy or use a second hand ISOFIX base.
- Never use an ISOFIX base that has been in an accident or become badly worn – replace the base. After an accident, the base may not appear damaged but it may not be able to protect your child in the event of another accident. Periodically inspect the base for wear and



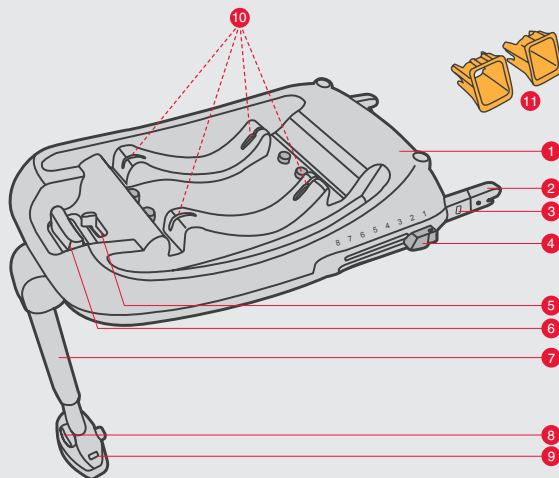
signs of damage.

- Always secure the Isofix base to the vehicle's Isofix points.
- All occupants in the vehicle must be correctly restrained.
- Do not place any objects in the foot well in front of the Isofix base.
- Do not make any unauthorised modifications or alterations to the Isofix base.
- Do not allow children to play with the Isofix base.
- Do not place the Isofix base on a table or work top.
- Make sure the Isofix base does not become trapped in the door of the vehicle or by a folding seat.
- Make sure folding seats are securely latched.
- Do not fit the Isofix base on a side or rear facing vehicle seat.
- A car's interior can become very hot if the vehicle is left parked in direct sunlight. It is recommended that the base and car seat is

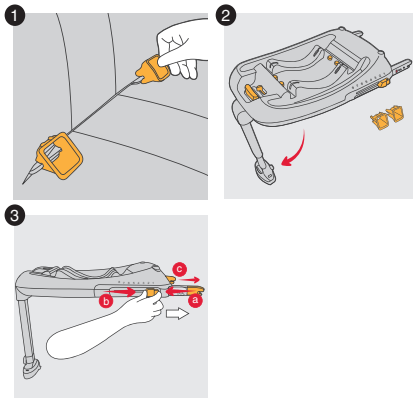


covered with a towel etc when not in use. This prevents the base and car seat from becoming hot and burning the child.

- When not in use, store the Isofix base in a safe, dry place.
- Do not place the front support leg on a floor storage compartment lid. The front support leg **MUST** make full and firm contact with the vehicle floor.
- Make sure that the support leg does not raise the base from the surface of the vehicle seat.



- 01 Base
- 02 ISOFIX connector arms
- 03 ISOFIX connection indicator
- 04 ISOFIX adjustment button
- 05 Shell second lock release button/indicator
- 06 Shell release handle/indicator
- 07 Support leg
- 08 Support leg adjuster
- 09 Support leg pressure indicators
- 10 Shell connection bars
- 11 Plastic ISOFIX guides



Installing the ISOFIX Base

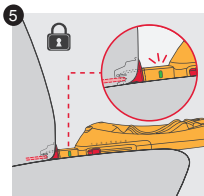
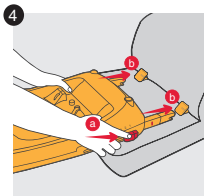
WARNING: To install the ISOFIX CHILD RESTRAINT SYSTEM read the instruction manual carefully as the safety of your child is at stake. It is important that you take the time to read these instructions carefully.

Check that the ISOFIX CHILD RESTRAINT SYSTEM has been installed correctly.

- 1 Insert the two plastic ISOFIX guides and hook them onto the vehicle ISOFIX points.

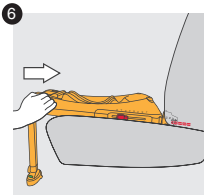
The plastic guides can help identify the vehicle ISOFIX points and make installation easier. They can also help with the protection of your vehicle seat.

- 2 Pull out the support leg from the attachment.
- 3 Pinch the Adjustment Buttons(a) on each side of the ISOFIX base and slide out the arms(b&c). ISOFIX has 8 positions, which adjust the length.



- 4 Connect the ISOFIX arms onto the vehicle ISOFIX points.

Note: see picture 4(a), need to push the ISOFIX adjuster button on both two sides. In order to make assembly easier, we suggest to adjust the ISOFIX to the longest position.

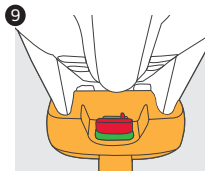
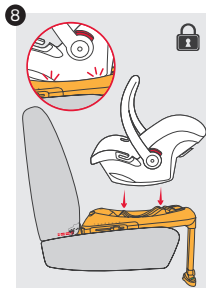
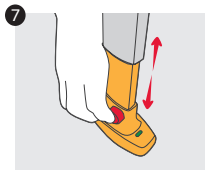


- 5 Push the Adjust buttons toward the vehicle's anchors until both connectors are locked and the indicators show green on both sides.
- 6 Push the base towards the seat back, making sure the base is installed firmly against the seat back.

Note: the adjust buttons on both two sides must in the same location



Instructions



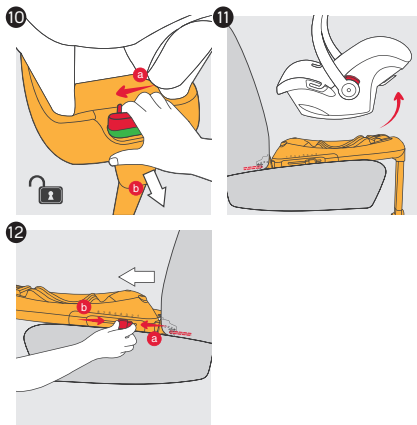
7 Push the support leg adjuster and adjust the support leg so that it makes full and firm contact with the vehicle floor. The two pressure monitors at the base of the support leg must turn from red to green confirming firm contact. Check that the front support leg clicks into position and is correctly adjusted.

8 Lower the car seat on to the ISOFIX Base and make sure that all 4 connection bars engage firmly and click into position on the base connection points (parts list no.10) Make sure the car seat handle is in the upright position and that it “clicks” into place.

9 Lift the car seat to make sure that all four connections have engaged correctly and the three connection indicators have changed from red to green (parts list no.5/6/9)

⚠ Do not place the front support leg on a floor storage compartment lid. The front support leg **MUST** make full and firm contact with the vehicle floor.

⚠ Make sure that the support leg does not raise the base from the surface of the vehicle seat.



Detaching the Car Seat from the ISOFIX Base

- 10 Push the shell release button to the left, at the same time pull the shell release button handle indicator, then you can move out the shell.
- 11 Carefully lift the car seat from the ISOFIX Base.

Removing the ISOFIX Base from the vehicle

- 12 Push the ISOFIX adjustment button, and the ISOFIX connector arms will pop-up automatically, then the base of ISOFIX can move out from the seat of car.

Pushing the support leg adjustment button to adjust the front support leg to the required length. Reattach to the holder position under the base. Carefully remove the base from your vehicle.



Instructions



✓	On outer rear seat	YES
✗	On centre rear seat	NO
✗	On a rearward-facing seat	NO
✗	On seats facing sideways	NO
✗	On rear seat with lapbelt only	NO
⚠	Front seat with airbag off	YES

Do not use on a passenger seat with a front airbag.



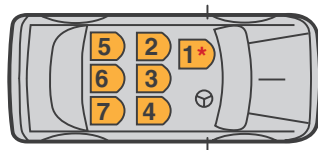


ISOFIX Base Vehicle Application List

Semi-Universal approved to ECE-R44.04 for use in the vehicles listed in the vehicle application list.

INFORMATION

- Do not place the front support leg on a floor storage compartment lid, the floor storage compartment lid support leg must make full and firm contact with the vehicle chassis.
- Please consult with the vehicle manufacturer regarding access to ISOFIX points.
- Because of the vehicle seat position care must be taken to correctly attach the child restraint system to the ISOFIX points.
- Vehicle seat (mid row) must be adjusted forward.
- Adjust the vehicle seat so that the base front support leg does not make contact with the floor storage compartment.
- Vehicle seat has to be fully adjusted to the rear most position.



***DO NOT USE ON A PASSENGER SEAT WITH A FRONT AIRBAG**

ALFA ROMEO		
156	1997-2005	2&4
159	2005>	2&4
Giulietta 940	2010>	2&4
GT Coupe	2004>	2&4
MiTo	2008>	1*2&4
AUDI		

A1	2010>	2&4
A2 4/5Door	2000>	1*2&4
A3 3/5 Door	Jan/ 2000>	2&4
A3 Sportback	May/2003>	1*2&4
A3 Convertible	2008>	1*2&4
S3 3/5 Door	May/2003>	1*2&4
A4 Saloon	Jan/1998>	1*2&4
A4 Estate	1996>	1*2&4
A4 Convertible	Jan/2002>	1*2&4
A4 Quattro	2000>	2&4
S4 Saloon	Jan/1998>	2&4
S4 Estate	Jan/1998>	2&4
S4 Convertible	2002>	2&4
RS4	2000>	2&4
RS4 Convertible	2002>	2&4
A5 Saloon	2007>	2&4
A5 Convertible	Mar/2009>	2&4
A5 Sportback 5 Door	Sep/2009>	1*2&4
S5 Saloon	2007>	2&4
A6 Saloon	Nov/2010>	2&4
A6 All Road Estate	Jan/2004>	2&4
A6 All Road Quattro, Saloon/Estate	Jan/2004>	1*2&4
A7 Sportback	2010>	2&4
A7 (4G)	Nov/2010>	2&4
A8	Feb/1998>	2&4
A8(4H)	Feb/2010>	2&4
S8	Feb-98	2&4

Q5	Nov/2008>	1*2&4
Q7	Jun/2006>	1*2&4
R8	April/2007>	1*
S5 Sportback 5 Door	Sept/2009>	1*2&4
TT Coupe	Mar/2003>	2&4
TT-11 Coupe	Aug/2006>	1*2&4
TT-11 Roadster	2006>	1*
TTS Coupe	2006>	1*
BMW		
Mini One	2001>	2&4
Mini One D	Jun/2003>	2&4
Mini Cooper	Dec/2001>	2&4
Mini Clubman	2007>	2&4
Mini Countryman	Jan/2011>	2&4
1 Series	Jan/2005>	2&4
1 Series Convertible	Jan/2008>	1*2&4
1 Series Coupe	2007>	2&4
135i Coupe	Jan/2008>	2&4
3 Series Saloon	Jan/2005>	2&4
3 Series Estate	1999>	2&4
3 Series Convertible	2000>	2&4
3 Series Coupe	1998>	2&4
3 Series Hatchback	2001>	2&4
5 Series Saloon	2003>	2&4
5 Series Estate	2003>	2&4
5 Series GT	Oct/2009>	2&4
5 Series Touring	2000>	2&4
1 Series Coupe	2007>	2&4
135i Coupe	Jan/2008>	2&4
3 Series Saloon	Jan/2005>	2&4
3 Series Estate	1999>	2&4
3 Series Convertible	2000>	2&4
3 Series Coupe	1998>	2&4
3 Series Hatchback	2001>	2&4

6 Series Convertible	2003>	2&4
6 Series Coupe	2003>	2&4
7 SeriesSaloon	2001>	2&4
X1	Oct/2009>	2&4
X3	2004>	2&4
X5	2004>	2&4
X6	2008>	2&4
CHRYSLER		
300C Saloon	2004>	2&4
Dodge Caliber	2006>	2&4
Dodge Avenger	2007>	2&4
Dodge Nitro	2006>	2&4
Dodge Ram 1500 4 Door	2002-2008	2,3&4
Voyager MPV	Jan/2001>	2&4
Grand Voyager	2001-2007	2,4,5&7
Grand Voyager	2008>	2,4&6
Jeep Cherokee	2002>	2&4
Jeep Grand Cherokee	2005>	2&4
Jeep Commander	2006>	2&4
Pacifica	2003-2008	2&4
PT Cruiser	2000>	2&4
PT Cruiser 11	2006>	2&4
Sebring Saloon	2007>	2&4
SebringConvertible	2007>	2&4
CITROEN		
Berlingo 11	Jan/2008>	1*2&4
C1	2005>	2&4
C2	2003>	2&4
C3	Jan/2004>	2&4
C3 Pluriel Cabriolet	2003>	2&4
C4 Hatchback	Sep/2004>	2&4
C4 Picasso	2007>	2,3&4
C4 Grand Picasso	2007>	2,3&4
C4 11	Oct/2010>	2&4

C5 Saloon	2000>	2&4
C5 Estate	2000>	2&4
C8 (seats 5&7) (d)	2003>	2,3,4,5&7
C Crosser	2007>	2&4
DS3	2010>	2&4
Evasion	1994-2002	2,4,5&7
Jumpy	2007>	2,4,5&7
Nemo	2007>	2&4
DIAHATSU		
Cuore	Sep/2007>	2&4
Materia	Mar/2006>	2&4
Sirion	May/2005>	2&4
Terios	May/2005>	2&4
Trevis	Sep/2005>	2&4
FIAT		
500	2007>	2&4
500 C Convertible	2009>	2&4
Bravo	2007>	2&4
Croma Estate	2008>	2&4
Doblo	2001>	2&4
Doblo 11	2010>	2&4
Fiorino Qubo	Jan/2008>	2&4
Grande Punto	Jan/2005>	2&4
Idea Mini MPV	2003-2007	2&4
Linea	2007>	2&4
Mondeo Estate	Jun/2007>	2&4
Multipla	2004-2007	2&4
Panda	Jan/2003>	2&4
Panda 4x4	Oct/2004>	2&4
Punto 3/5Door	1999-2007	2&4
Scudo 11	2007>	2,4,5&7
Sedici	2006>	2&4
Stilo Saloon	Jan/2001>	2&4
Stilo Estate	2004>	2&4

Ulysse	2003>	2&4
FORD		
C Max (a)	2003>	2&4
C Max & Grand C-Max	2010>	2&4
C Max & Grand C-Max (DXA)	Dec/2010>	1*&3
Grand C Max	2010>	2&4
Fiesta 3/5 Door	Oct/2008>	2&4
Focus	Nov/2004>	2&4
Focus CC Convertible	Jan/2007>	2&4
Focus Estate	2005>	2&4
Focus Coupe	Jan/2007>	2&4
Galaxy	Jan/1998>	2&4
Galaxy	Jan/2004>	2,3&4
Ka	Feb/2009>	2&4
Kuga SUV	Jan/2009>	2&4
Maverick SUV	Jan/2001>	2&4
Mondeo Saloon	2007>	2&4
Mondeo Estate	2007>	2&4
Ranger	Jul/2011>	2&4
S Max	Mar/2006>	2&4
Tourneo Connect	Jan/2003>	2&4
Transit Connect	2006>	2&4
HONDA		
Accord 4 Door	2003>	2&4
Accord 5 Door	2009>	2&4
Accord Estate	Jun/2003>	2&4
City	2009>	2&4
Civic Hatchback (e)	Nov/2000>	2&4
CRV	Jan/2002>	2&4
CRZ	Jun/2010>	2&4
FRV 6 Seats	2005>	2&4
I30 CW	Jan/2009>	2&4
Insight	Apr/2009>	2&4

Jazz	Dec/2001>	2&4
Jazz 5 Door	Nov/2008>	2&4
Legend	Aug/2006>	2&4
Pilot	Aug/2006>	2,3,4&7
Stream	Nov/2000>	2&4
HYUNDAI		
Accent Saloon	Nov/2002>	2&4
Accent Hatchback	Feb/2002>	2&4
Coupe	Sep/2001>	2&4
Elentra 5 Door	Jan/2002>	2&4
Getz	2002-2008	2&4
H1 MPV	2008>	2&4
I10	Jan/2009>	2&4
I20	Jan/2009>	2&4
I30 Saloon	2007>	2&4
I30 Estate	2007>	2&4
Ix35	2010>	2&4
Ix40	Aug/2011>	2&4
Ix55	2009>	2&4
Matrix 5 Door	Jan/2002>	2&4
Matrix	2008>	2&4
Santa Fe SUV	Mar/2002>	2&4
Sonata	Apr/2001>	2&4
Sonica	Apr/2001>	2&4
Terracan 5 Door	Sep/2002>	2&4
Tuscan 5 Door (b)	Sep/2004>	2&4
Veloster	Jun/2011>	2&4
JAGUAR		
S Type	Mar/2002>	2&4
X Type Saloon	Jan/2001>	2&4
X Type Estate	Jan/2001>	2&4
XF	2008>	2&4
XJ Saloon	Jan/2003>	2&4
XK Convertible	Mar/2006>	2&4

XK Coupe	Mar/2006>	2&4
KIA		
Carens	May/2002>	2&4
Carnival	Dec/2003>	2&4
Cee'd Hatchback	Jan/2007>	2&4
Cee'd Estate	2007>	2&4
Cerato Saloon	Feb/2004>	2&4
Magentis	Oct/2002>	2&4
Opirus	2003>	2&4
Picanto	Jan/2004>	2&4
R10	May/2005>	2&4
Rio	Aug/2002>	2&4
Sedona	Aug/1998>	2&3
Sedona	Dec/2003>	2&4
Sorento	Nov/2002>	2,3&4
Soul	Feb/2009>	2&4
Sportage	Sep/2004>	2&4
Venga	Nov/2009>	2&4
LANCIA		
Delta (c)	2008>	2&4
Musa	2004>	2&4
Phedra	2002>	2&4
Ypsilon	2003>	2&4
LANDROVER		
Discovery 2	Apr/1998>	2&4
Discovery 3	Jan/2004>	2,3&4
Freelander 2	2006>	2&4
Range Rover	May/2002>	2&4
Range Rover Vogue	2011>	2&4
Range Rover Sport	2005>	2&4
LEXUS		
GS300 Saloon	Aug/2000>	2&4
GS400 Saloon	Aug/2000>	2&4
IS200	Jun/2001>	2&4

IS300		Jun/2001>	2&4
IS250		2005>	2&4
RX300		Feb/2003>	2&4
RX350		Feb/2003>	2&4
RX400h		2006>	2&4
MAZDA			
2		Jan/2003>	2&4
3 Saloon		Oct/2003>	2&4
3 Hatchback		Oct/2003>	2&4
323		Jan/2001>	2&4
5		2005>	2&4
6 Saloon		Jan/2003>	2&4
6 Estate		2009>	2&4
6/Atenza Saloon		May/2002>	2&4
6/Atenza Estate		May/2002>	2&4
CX7		2007>	2&4
MX5 2 Seats		1998-2005	1*
Premacy		1999-2005	2&4
RX8		Apr/2003>	2&4
Tribute		Jan/2001>	2&4
MERCEDES			
A		Mar/2001>	2&4
B		Jun/2005>	2&4
C Saloon		May/2000>	2&4
C Estate		May/2001>	2&4
C Coupe		May/2001>	2&4
CL		Sep/2002>	2&4
CLC 180 Coupe		2008>	2&4
CLK		May/2002>	2&4
CLS		Oct/2004>	2&4
E Saloon		Mar/2002>	2&4
E Estate		Mar/2002>	2&4
E Convertible		2010>	2&4
E Coupe		2009>	2&4

G	1990>	2&4
GLK	2008>	2&4
M	Sep/2001>	2&4
ML	Jan/2003>	2&4
R	Dec/2005>	2,4,5&7
S	Sep/2002>	2&4
Vaneo	2001-2005	2,3&4
Vaneo 6 seats	Sep/2003>	2,4,5&6
Vito	Sep/2003>	2&4
MITSUBISHI		
ASX	2010>	2&4
Colt 3 Door	Jan/2005>	2&4
Colt 5 Door	May/2004>	2&4
Colt Z30 3 Door	2004-2008	2&4
Colt Z30 5 Door	2004>	2&4
Grandis	Jan/2004>	2&4
L200 Double Cab	Jan/2006>	2&4
Lancer Saloon	Jan/2003>	2&4
Lancer Hatchback	2007>	2&4
Outlander 5 Doors	Mar/2003>	2&4
Pajero	Feb/2007>	4
Shogun	Jan/2006>	2&4
MG ROVER		
MG 6 4/5 Door	2010>	2&4
NISSAN		
Almera	Jan/2000>	2&4
Cube Z12	2008>	2&4
Juke F15	2010>	2&4
Micra	1993-2003	2&4
Micra 3 Door	Jun/2001>	2&4
Micra 5 Door	Jun/2001>	2&4
Micra Convertible	Jan/2005>	1 *
Murano	2003>	2&4
Note	2004>	2&4

Pathfinder	Jan/2006>	2&4
Pixo	Jan/2009>	2&4
Primera	Jan/2002>	2&4
Quashqai	2006>	2&4
Quashqai + 2	Oct/2008>	2&4
Tiida Saloon	2004>	2&4
Tiida Hatchback	2004>	2&4
X-Trail	Jul/2001>	2&4
PEUGEOT		
107	Jan/2005>	2&4
206	Dec/1998>	1*2&4
206 Convertible	Jan/2009>	1*
207 3 Door	2006>	2&4
207 5 Door	2006>	2&4
207 SW Estate	2006>	2&4
207 Convertible	Apr/2007>	1*
307 Saloon	Jan/2001>	2&4
307 Estate	Jan/2001>	2&4
307 Convertible	Jan/2003>	2&4
307 SW	2002>	2&4
308	2007>	1*2&4
308 Convertible	Jan/2009>	2&4
407	2004>	2&4
407 Coupe	2005>	2&4
807	Jan/2003>	2,4,5&7
1007 (e)	Jan/2005>	2&4
4007	Jan/2007>	2&4
5008	Jan/2010>	2,3&4
Expert Tepee	Jan/2009>	2,4,5&7
Partner Tepee	Jan/2009>	1*2&4
PORSCHE		
Cayenne	Jan/2002>	1*2&4
Cayenne	Jan/2009>	2&4
Panamera	Jan/2009>	2&4

RENAULT		
Clio 11	Sep/1998>	2&4
Clio 11 3 Door	2007>	2&4
Clio 11 5 Door	2007>	2&4
Clio 11 MPV	Sep/1998>	1*
Clio 111 Hatchback	Jun/2005>	1*2&4
Clio 111 Estate	Jun/2005>	1*2&4
Clio Grandtour 111	2008-2009	2&4
Clio Grandtour	2009>	2&4
Espace 111	Jan/2000>	2,4,5&7
Espace IV	2002>	2,3,4,5&7
Espace K	Dec/2010>	2,3,4,5&7
Grand Espace IV	2002>	2,3,4,5&7
Fluence Z	Aug/2010>	2&4
Kangoo 1	Sep/1999>	3
Kangoo 11	2008>	1*2&4
Kangoo be bop	2009>	2&4
Laguna 11 (b)	Jan/2001>	2&4
Laguna 5 Door	2007>	2&4
Laguna Coupe	2007>	2&4
Laguna 111	Nov/2010>	2&4
Meganne 1 3 Door	Sep/1999>	1*2&4
Meganne 1 5 Door	Sep/1999>	1*2&4
Meganne 1 Convertible	Jun/2001>	2&4
Meganne 11 3 Door	Sep/2002>	1*2&4
Meganne 11 5 Door	Sep/2002>	1*2&4
Meganne 11 Coupe	2007>	1*2&4
Meganne 11 5 Door Saloon	2007>	2&4
Meganne 11 5 Door Estate	2007>	2&4
Meganne 11 Convertible	2003>	2&4
Meganne 111 3 Door	2008>	2&4
Meganne 111 5 Door	2008>	2&4
Modus	Sep/2004>	1*2&4
Scenic 11	2003>	1*2&4

Grand Scenic 11	2004>	1*2&4
Trafic Generation	Mar/2002>	2,3&4
Trafic 8 Seats	Mar/2002>	3
Twingo	Jan/2008>	1*2&4
SAAB		
9-3 Saloon	Sep/2002>	2&4
9-3 Estate	Sep/2002>	2&4
9-3 Convertible	Sep/2003>	2&4
9-5 Saloon	Nov/2005>	2&4
9-5 Estate	Nov/2005>	2&4
SEAT		
Alhambra	1998>	2&4
Alhambra	2005>	2,3&4
Alhambra 7N	Oct/2010>	2,3,4,5&7
Altea	Jan/2004>	2&4
Altea	Jan/2004>	2&4
Arosa	Jan/2004>	2&4
Cordoba, Vario	Aug/1999>	2&4
Exeo Saloon	Jan/2009>	1*2&4
Exeo Estate	2009>	2&4
Ibiza 3 Door	2004>	2&4
Ibiza 5 Door	2004>	2&4
Ibiza Estate	2010>	2&4
Leon Hatchback	Jan/1998>	2&4
Toledo Saloon	Jan/1999>	2&4
SKODA		
Fabia	Aug/1998>	2&4
Fabia 11 Saloon	2007>	2&4
Fabia 11 Estate	2007>	2&4
Felicia Saloon	1994>	2&4
Felicia Estate	1994>	2&4
Octavia Saloon	Jan/2000-Dec/2002	2&4
Octavia Estate	Jan/1996-Dec/2004	2&4
Octavia 1 Saloon	Jan/2004>	2&4

Octavia 1 Estate	Jan/2004>	2&4
Octavia 11 Saloon	2004>	2&4
Octavia 11 Estate	2004>	2&4
Roomster	2006>	2&4
Superb 1	Oct/2001>	2&4
Superb 11	2008>	2&4
Superb Estate	2010>	2&4
Yeti	2009>	2&4
SMART		
Forfour (f)	2004>	2&4
SUBARU		
Forester	Jan/2002>	2&4
Impreza WRX/STI (Early model)	2002>	2&4
Impreza Hatchback (Later model)	2007>	2&4
Impreza Estate (Later model)	2007>	2&4
Legacy	Jun/2002>	2&4
Outback	2003>	2&4
Tribeca	2006>	2&4
SUZUKI		
Alto VII	2009>	2&4
Grand Vitara 2 Door	Sep/2002>	2&4
Grand Vitara 4 Door	Sep/2002>	2&4
Ignis 3 Door	Jan/2004>	2&4
Kizashi FR	Sep/2010>	2&4
Liana Saloon	Jun/2002>	2&4
Splash	2007>	2&4
Swift	Dec/2004>	2&4
SX4 Hatchback	2006>	2&4
SX4 Saloon	2006>	2&4
Wagon R+	Aug/2002>	2&4
TOYOTA		
Auris	2007>	2&4

Avensis Saloon	Jan/2003>	2&4
Avensis Estate	Jan/2003>	2&4
Avensis Verso	May/2001>	2&4
Aygo	Apr/2005>	2&4
Corolla Hatchback	Oct/2001>	2&4
Corolla Estate	2000>	2&4
Corolla Verso	Oct/2001>	2&4
IQ	2009>	2&4
Land Cruiser	Aug/2002>	2&4
Previa	Mar/2000>	2&4
Prius Hatchback	Feb/2001>	2&4
RAV 4	May/2000>	2&4
Urban Cruiser	2009>	4
Yaris	Jan/1999-Dec/2005	2&4
Yaris	Jan/2005>	2&4
VAUXHALL/OPEL		
Agila	Sep/2002>	2&4
Ampera	Oct/2011>	2&4
Antara	Nov/2006>	2&4
Astra Hatchback	Jan/2004-2009	2&4
Astra Saloon	Dec/2009>	2&4
Astra Estate	2004>	2&4
Astra Convertible	Feb/2006>	2&4
Corsa	Sep/2000>	2&4
Corsa C	Sep/2001>	2&4
Corsa D	Sep/2006>	2&4
Insignia Hatchback	Jan/2008>	2&4
Insignia Saloon	Jan/2008>	2&4
Insignia Estate	2009>	2&4
Meriva	2003>	2&4
Signum Hatchback	Feb/2003>	2&4
Vectra 5 Door	Apr/2002>	2&4
Vectra Estate	Sep/2003>	2&4
Vivaro	2001>	6

Zafira A	Jan/2003>	2&4
Zafira B	May/2005>	2&4
Zafira C	Sep/2011>	2&4
VOLVO		
C30 Hatchback	Jan/2006>	2&4
C70	May/2000>	2&4
C70 Convertible	2007>	2&4
S40	Aug/2001>	2&4
V40	Aug/2001>	2&4
V50	2003>	2&4
S60	Sep/2001 - 2008	2&4
S60R	Mar/2010>	2&4
V60	2010>	2&4
S70	Dec/1999>	2&4
V70	Dec/1999>	2&4
S80	May/20001>	2&4
XC60	2008>	2&4
XC70	2007>	2&4
XC90	2002>	2&4
VOLKSWAGON		
Amarok	2010>	2&4
Beetle Saloon	Jan/1998>	2&4
Beetle Convertible	Jan/2002>	2&4
Beetle 3 Door	Jul/2011>	2&4
Bora Saloon	Jan/1998>	2&4
Caddy (g)	2000>	2&4
Cross Polo	2006>	2&4
EOS	2006>	2&4
Fox	Jan/2005>	2&4
Golf IV	Sep/1997>	2&4
Golf IV Estate	Jan/1999-Dec/2006	2&4
Golf V	Sep/2003>	2&4
Golf V Estate	Jan/2008>	2&4
Golf VI	Aug/2008>	2&4

Golf VI Estate	2009>	2&4
Jetta	2006>	2&4
Lupo	1998>	2&4
Passat Saloon	Jan/1998>	2&4
Passat Estate	2005>	2&4
Passat Coupe	Jan/2008>	2&4
Pheaton Saloon	Jan/2002>	2&4
Polo	Sep/1999>	2&4
Polo Estate	1994>	2&4
Scirocco 111	Jan/2008>	2&4
Sharan	Jan/1998-Jan/2003	2,4,5&7
Sharan (Sharan11) (g)	Jan/2004>	2,3,4,5&7
T4 Caravelle	1999>	2&4
T4 Multivan	May/1999>	2&4
T5 California	2003>	4,6&7
T5 Caravelle TL/CL	2003>	2&3
T5	2003>	2&3
T5 Long Wheel Base	2003>	2,3,5&6
T5 Multivan	Jan/2003>	2,4,5&7
Tiguan	2007>	2&4
Touareg	Jan/2002>	1*2&4
Touran (g)	Jan/2003>	2&4
Touran ECO Fuel (g)	Jan/2008>	2&4



© Phil and Teds Most Excellent Buggy Company Ltd 2012.

We (Phil and Teds Most Excellent Buggy Company Ltd) own the intellectual property rights in our brands, designs and inventions featured in this publication. These include, without limitation, the phil&teds, adapt&survive!, &, INLINE trade marks and INLINE DOUBLE BUGGY shape. We actively pursue people who infringe our intellectual property.

©Phil & Teds Most Excellent Buggy Company Ltd 2012.

Nous (Phil and Teds Most Excellent Buggy Company Ltd) sommes détenteurs de tous les droits de propriété intellectuelle associés à nos marques, modèles et inventions mentionnés dans le présent document. Ceux-ci incluent, sans que cela soit limitatif, les marques commerciales phil&teds, adapt&survive !, &, et INLINE et la forme du INLINE DOUBLE BUGGY. Nous engageons des poursuites contre tous ceux qui enfreignent nos droits de notre propriété intellectuelle.

© Phil and Teds Most Excellent Buggy Company Ltd 2012.

Wir (Phil and Teds Most Excellent Buggy Company Ltd) sind Eigentümer aller geistigen Eigentumsrechte bezüglich unserer in dieser Veröffentlichung aufgeführten Marken, Designs und Erfindungen. Diese schließen die Marken phil&teds, adapt&survive!, &, und INLINE sowie die Form INLINE DOUBLE BUGGY ohne Einschränkungen ein. Personen, die unsere Eigentumsrechte verletzen, werden von uns aktiv verfolgt.

© Phil and Teds Most Excellent Buggy Company Ltd 2012.

Nos pertenecen a nosotros (Phil and Teds Most Excellent Buggy Company Ltd) los derechos de propiedad intelectual de nuestras marcas, diseños e inventos mostrados en la presente publicación. Se incluyen, sin limitarse a, las marcas phil&teds, adapt&survive!, &, e INLINE la forma de INLINE DOUBLE BUGGY. Iniciaremos acciones legales contra aquéllos que violen nuestra propiedad intelectual.

© Phil and Teds Most Excellent Buggy Company Ltd 2012.

Wij (Phil and Teds Most Excellent Buggy Company Ltd) bezitten de intellectuele eigendomsrechten op onze merken, ontwerpen en uitvindingen die in deze publicatie worden vermeld. Dit zijn, zonder beperking, de handelsmerken phil&teds, adapt&survive!, &, INLINE en de INLINE DOUBLE BUGGY-vorm. We dienen daadwerkelijk een aanklacht in tegen degenen die inbreuk maken op ons intellectueel eigendomsrecht.





AU/NZ

✉ Mountain Buggy Australasia
102-112 Daniell Street
Newtown, Wellington 6021
New Zealand / Nouvelle-Zélande.
☎ + 64 4 3800 833

EUR

✉ Mountain Buggy Europe
Klavermaten 37C
7472 DD Hof van Twente (Goor)
NETHERLANDS / Pays-Bas.
☎ + 31 (0) 547 352 727

USA/CAN

✉ Mountain Buggy USA
221 Jefferson Street
Fort Collins, CO 80524
USA.
☎ 1 800 916 8442

FRA

✉ Mountain Buggy France
15 rue Gertrude Bell
56000 Vannes
FRANCE.
☎ + 33 (0) 2 97 44 88 26
@ france@mountainbuggy.com

Designed in New Zealand. Made in China
Conçu en Nouvelle-Zélande. Fabriqué en Chine
Conforme aux exigences de sécurité

AU/NZ

✉ phil&teds
102-112 Daniell Street
Newtown, Wellington 6021
New Zealand / Nouvelle-Zélande.
☎ + 64 4 3800 833

EUR

✉ phil&teds Europe BV
Klavermaten 37C
7472 DD Hof van Twente (Goor)
NETHERLANDS / Pays-Bas.
☎ + 31 (0) 547 352 727

USA/CAN

✉ phil&teds USA Inc
221 Jefferson Street
Fort Collins, CO 80524
USA.
☎ 1 800 839 4985

FRA

✉ phil&teds France
15 rue Gertrude Bell
56000 Vannes
FRANCE.
☎ + 33 (0) 2 97 44 88 26
@ france@philandteds.com

Designed in New Zealand. Made in China
Conçu en Nouvelle-Zélande. Fabriqué en Chine
Conforme aux exigences de sécurité