

How to Connect TALUS with WCS-232

Version: 3.0

2020. 09. 18



Revision History

Date of Revision	Document Version	Pages Revised	Details of Revision
2009.12.24	1.0	All	Initial release
2014.07.24	2.0	All	Added WCS-232 V5.0
2020.09.18	3.0	All	Added WCS-232 V6.0

Copyright 2019 SystemBase Co., Ltd. All rights reserved.

Website <http://www.sysbas.com/>

Tel +82-2-855-0501

Fax +82-2-855-0580

16F (1601) Daerung Post Tower-1, 288, Digital-ro, Guro-gu, Seoul,
Republic of Korea

For inquiries, please contact us at tech@sysbas.com

Table of Contents

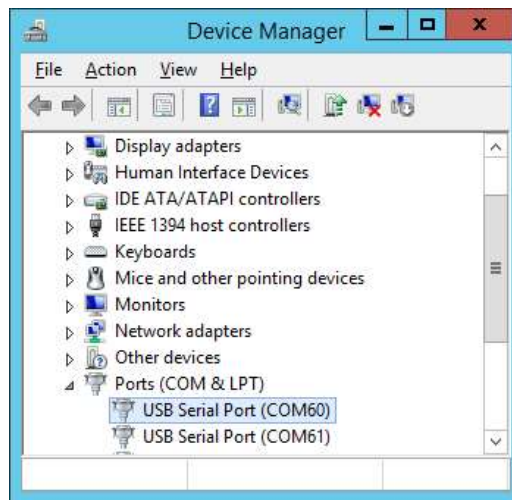
- 1. WCS-232 SETUP..... 4**
 - 1.1 WCS-232 V4.0 CONFIGURATION..... 4
 - 1.1.1 Connect WCS-232 V4.0..... 4
 - 1.1.2 Run Terminal Program(TestMP2) 4
 - 1.1.3 Set WAIT MODE 5
 - 1.1.4 Set Serial Speed 5
 - 1.1.5 Save Settings 6
 - 1.2 WCS-232 V5.0 CONFIGURATION..... 7
 - 1.2.1 Connect WCS-232 V5.0..... 7
 - 1.2.2 Set CONNECTION MODE 7
 - 1.3 WCS-232 V6.0 CONFIGURATION..... 9
 - 1.3.1 Connect WCS-232 V6.0..... 9
 - 1.3.2 Set CONNECTION MODE 10
- 2. HOW TO CONNECT TALUS..... 12**
 - 2.1 START BLUETOOTH ADAPTER 12
 - 2.2 SEARCH BLUETOOTH DEVICE 12
 - 2.3 SEARCH BLUETOOTH SERVICE 14
 - 2.4 CONNECT BLUETOOTH SERIAL PORT 14
 - 2.5 DISCONNECT BLUETOOTH SERIAL PORT 16

1. WCS-232 Setup

1.1 WCS-232 V4.0 Configuration

1.1.1 Connect WCS-232 V4.0

Check the port number where WCS-232 V4.0 is connected to. In this guide, port number 60 is connected to WCS-232. You may have different COM port number that is connected to WCS-232.



[Figure 1. Check WCS-232 V4.0 Port]

1.1.2 Run Terminal Program

Run terminal program then open COM60 port. Move the switch on WCS-232 V4.0 to 'Setup' and press 'Enter' key from the keyboard to see the message show in Figure 2.

(Most terminal programs can be used.)

```

=====
Serial/RF Converter Information
[SystemBase Co., Ltd.]
=====
SOFTWARE VERSION 2.1.0 2010/06/25
Model           : WCS-232
Device Name     : WCS-232 V4.0
Authentication  : OFF
Connection Mode : 1:1
Local BD_ADDR   : 0001953D0DDE
Remote BD_ADDR  : 0001953D0DDD
COM Port        : 9600 8-N-1 Flow Control: None
Factory Settings: 9600 8-N-1 Flow Control: None
Class of Device : 001F00
Low Power Mode  : OFF
Pairing role    : Master
AT Response     : OFF
□

```

[Figure 2. Terminal Program Window]

1.1.3 Set WAIT MODE

Type “M” to show the modes as shown below.

Press “1” to set to “WAIT” mode.

```

SOFTWARE VERSION 2.1.0 2010/06/25
Model           : WCS-232
Device Name     : WCS-232 V4.0
Authentication  : OFF
Connection Mode : 1:1
Local BD_ADDR   : 0001953D0DDE
Remote BD_ADDR  : 0001953D0DDD
COM Port        : 9600 8-N-1 Flow Control: None
Factory Settings: 9600 8-N-1 Flow Control: None
Class of Device : 001F00
Low Power Mode  : OFF
Pairing role    : Master
AT Response     : OFF

Type Mode(0-1:1/1-WAIT/2-REGISTER&CONNECT/3-WAIT COMMAND/4-MULTI DROP/5-NODE
SWITCHING) followed by <CR>.
□

```

[Figure 3. Mode Configuration]

1.1.4 Set Serial Speed

To set the communication speed, type “B”. Available speeds are shown as below.

The default is set to 9600bps.

```
SOFTWARE VERSION 2.1.0 2010/06/25
Model : WCS-232
Device Name : WCS-232 V4.0
Authentication : OFF
Connection Mode : 1:1
Local BD_ADDR : 0001953D0DDE
Remote BD_ADDR : 0001953D0DDD
COM Port : 9600 8-N-1 Flow Control: None
Factory Settings: 9600 8-N-1 Flow Control: None
Class of Device : 001F00
Low Power Mode : OFF
Pairing role : Master
AT Response : OFF

Type bps
0: 1200
1: 2400
2: 4800
3: 9600
4: 19200
5: 38400
6: 57600
7: 115200
followed by <CR>.
□
```

[Figure 4. Serial Communication Speed Configuration]

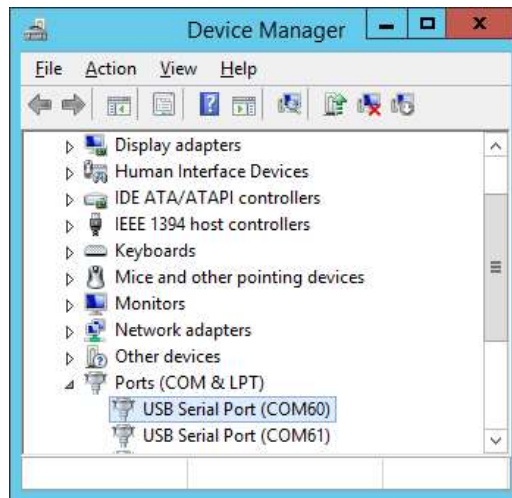
1.1.5 Save Settings

After setting configuration is complete, type **"X" to save**, then move the switch to "ACTIVE" on the WCS-232 to apply the configuration.

1.2 WCS-232 V5.0 Configuration

1.2.1 Connect WCS-232 V5.0

Check the port number where WCS-232 V5.0 is connected to. In this guide, port number 61 is connected to WCS-232. You may have different COM port number that is connected to WCS-232



[Figure 5. Checking WCS-232 V5.0 Port]

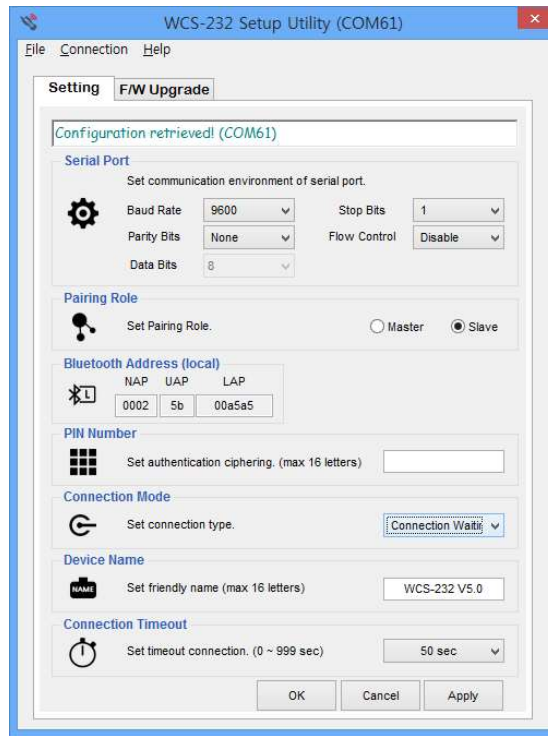
1.2.2 Set CONNECTION MODE

Run 'WCS-232 Setup Utility' and connect to COM61 then move the switch to "ACTIVE" on the WCS-232.

Change 'Pairing Role' to 'Slave' and 'Connection Mode' to "Connection Waiting".

Click 'Apply' or 'OK' button to save then move the switch to "ACTIVE" on the WCS-232 to apply the configuration.

* If you necessary WCS-232 Setup utility, contact sales representative(marketing@sysbas.com)



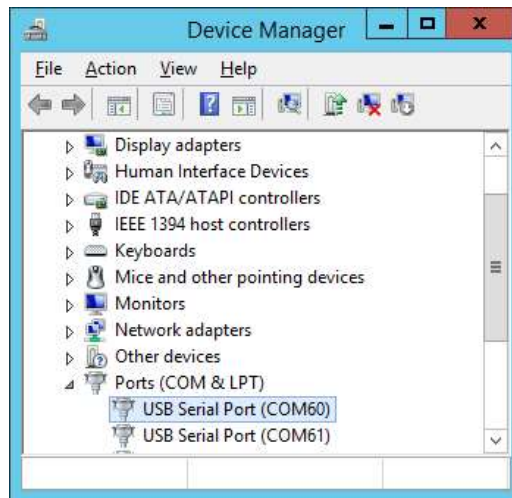
[Figure 6. WCS-232 Setup Utility Window]

1.3 WCS-232 V6.0 Configuration

1.3.1 Connect WCS-232 V6.0

Check the port number where WCS-232 V6.0 is connected to. In this guide, port number 61 is connected to WCS-232.

* The COM port number may change depending on the device connection status.



[Figure 7. Check WCS-232 V6.0 Port]

Connect to WCS-232 V6.0 COM61. Run the WCS-232 V6.0 setup program. Set the ports and speed lights in the Serial Communications Setup window which will generate approximately 20 seconds, and click OK. The basic speed is 9,600 bps.

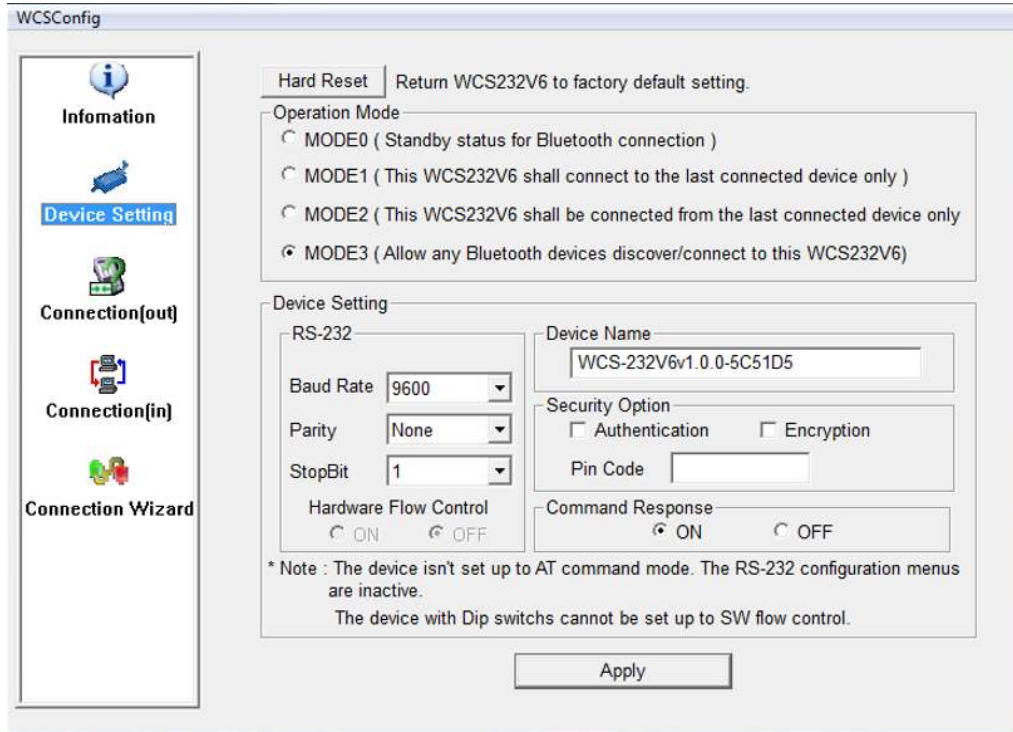


[Figure 8. WCS-232 V6.0 Setup Program Port Setting]

1.3.2 Device Setting

After running and connecting WCS-232 v6.0 setup program, click Device Setting, the second left menu and select “MODE3” at Operation Mode.

Click “Apply” button to maintain the connection standby state(allows any Bluetooth devices discover/connect to this WCS-232 v6.0).



[Figure 9. Running WCS-232 V6.0 Setup Program]

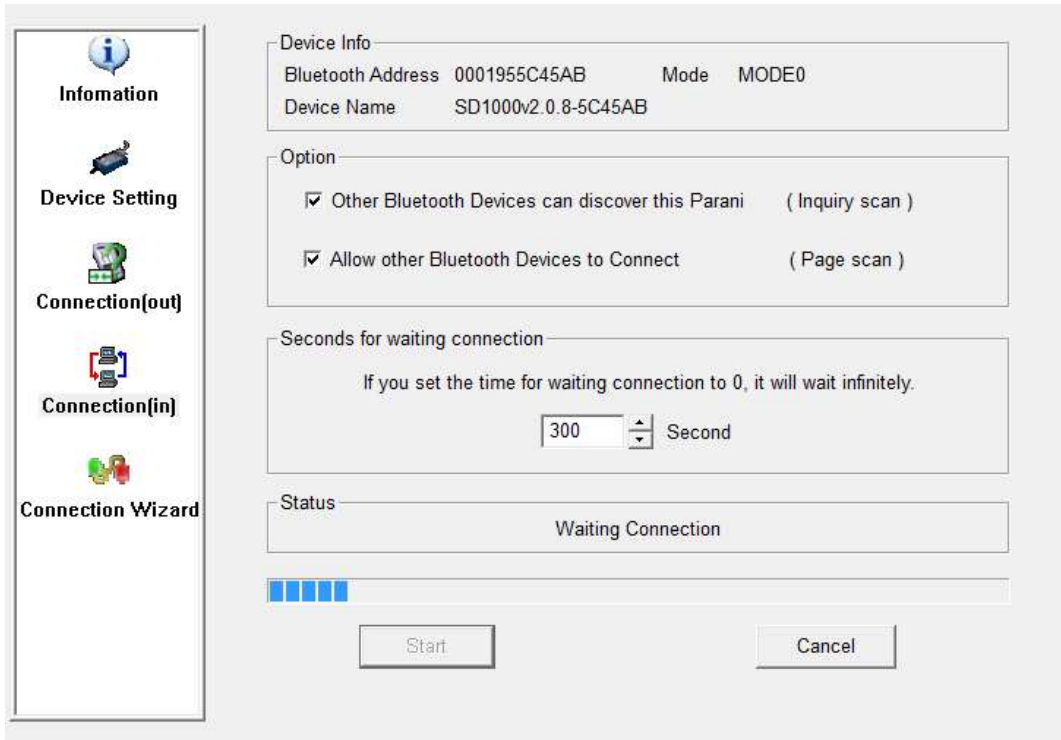
1.3.3 Set CONNECTION MODE

After applying MODE3, click Connection(in), the fourth left menu and click “Start” button to start access standby.

At the default setting, access waiting is held for 300 seconds, and if set to zero, the access waiting mode is maintained.

Exit the setup program after completing the pairing.

* The following WCS-232 V6.0 setup programs are available to download from the Systembase homepage <http://www.sysbas.com>



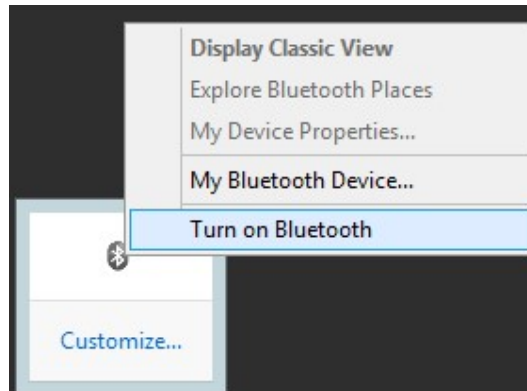
[Figure 10. Running WCS-232 V6.0 Setup Program]

2. How to connect TALUS

2.1 Start Bluetooth Adapter

Connect Bluetooth adapter to the USB port on the computer.

Use the right mouse click on the Bluetooth icon from the tray icon then select 'Turn on Bluetooth'.



[Figure 11. Bluetooth Tray Icon]

2.2 Search Bluetooth Device

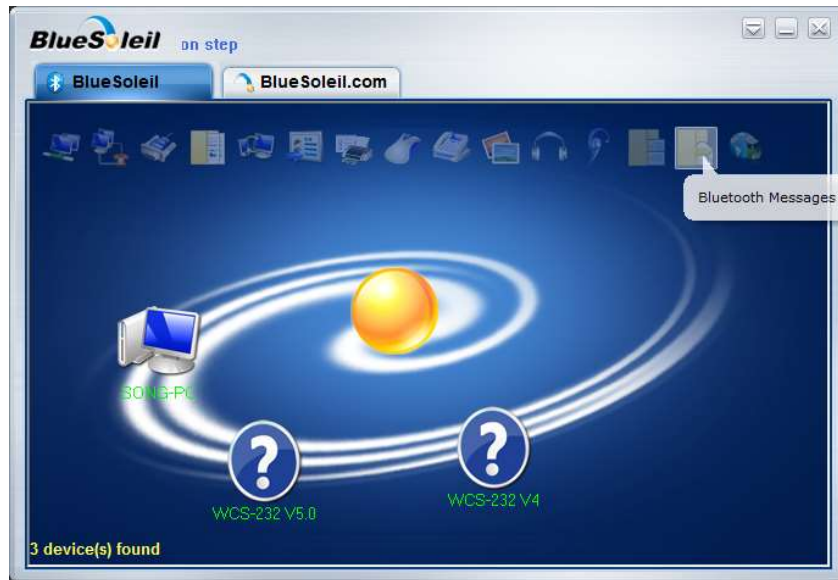
In order to connect to a Bluetooth device, target devices require to be found from the computer first.

Double click on the Bluetooth icon in the tray icon to run BlueSoleil.



[Figure 12. BlueSoleil Window]

When 'My Device' icon, the yellowish ball shaped object, is double clicked in the middle of BlueSoleil window, found Bluetooth devices will be appeared.



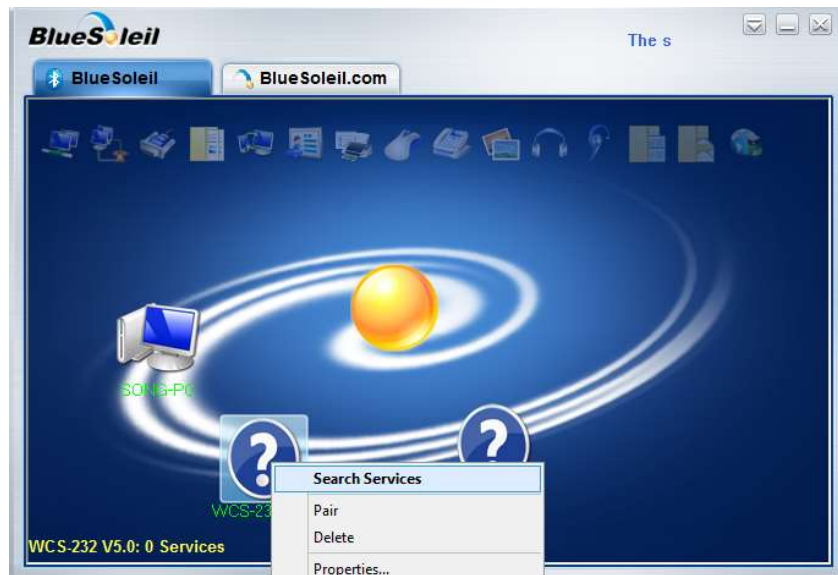
[Figure 13. Found Bluetooth Devices]

2.3 Search Bluetooth Service

SPP (Serial Port Profile) allows Bluetooth device to be connected to virtual serial port.

Programs that connects to standard serial port will be able to connect to the virtual serial port to read and write from.

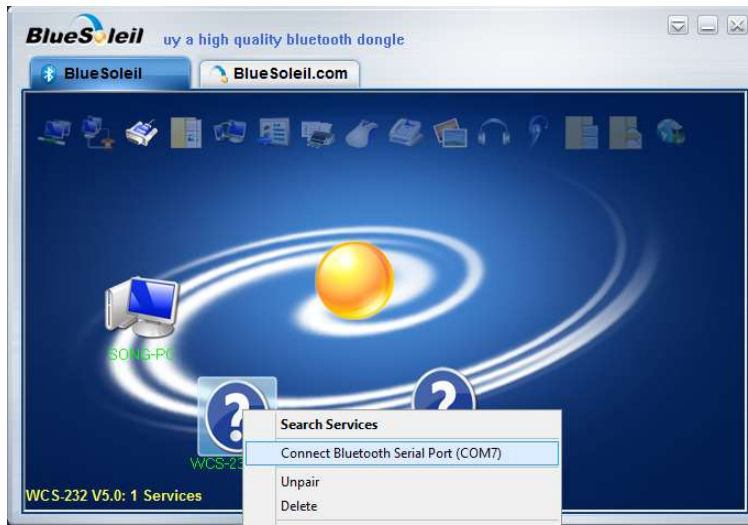
Use right mouse click on WCS-232 icon to perform a 'Search Services'.



[Figure 14. Bluetooth Device Search Services]

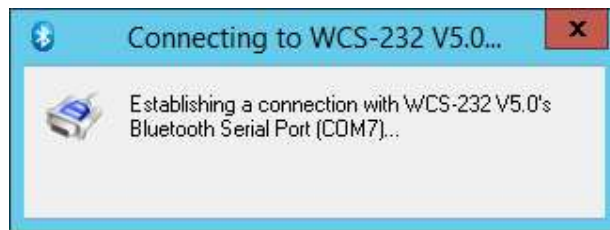
2.4 Connect Bluetooth Serial Port

Click on 'Connect Bluetooth Serial Port' from the WCS-232 device icon as shown below.



[Figure 15. Connect Bluetooth Device to Serial Port]

Attempt to connect to WCS-232.



[Figure 16. Connecting Bluetooth Device to Serial Port]

After connection is established, the Bluetooth device can be used from the serial port connected to it.



[Figure 17. Bluetooth - Serial Port Connection Established]

2.5 Disconnect Bluetooth Serial Port

To disconnect, use right mouse button to click on WCS-232 icon, then click on 'Disconnect Bluetooth Serial Port'.



[Figure 18. Disconnect Bluetooth Device from Serial Port]