

1 Overview

Thank you for purchasing PROG flash programming software from PEMicro. The PROG license will be permanently activated on a PEMicro Multilink debug probe. That Multilink will then work with this version of PROG on any machine where a supported version of the software is installed.

2 Supported Hardware

The following PEMicro interfaces support this method of PROG licensing:

Multilink Debug Probes

- Multilink ACP (part#: USB-ML-ACP) - Rev. A or newer
- Multilink Universal (part#: USB-ML-UNIVERSAL) - Rev. C or newer
- Multilink Universal FX (part#: USB-ML-UNIVERSAL-FX) - Rev. B or newer

Note: Cyclone programmers do not require a license as they already include PROG software.

The Revision of a PEMicro hardware interface is located on its rear label. If your hardware is an older Rev. that does not support this licensing, please contact us at licensing@pemicro.com. A Multilink trade-in program is available for customers needing supported hardware interfaces.

3 Downloading Software Purchases

If you wish to download purchased software, go to the pemicro.com website and click on My Account (login required). Then select My Product Licenses from the options provided.

Note: If the software has been purchased for the user, the user should make sure that the purchaser transfers the license to them before they download.

Search by installation code:

| License ID | Order # Invoice # | Date Bought | Product | Action |
|--|----------------------|-------------|-------------|--|
| 65696 <small>Active License</small> | 95154 97805 | 2020-Mar-02 | PROG-HL-12Z | ▶ View License ▶ Transfer license to someone else ▶ Download my software |

Find your software among those listed and click on Download My Software to download. You can also search by Installation Code in the box provided above. This page also allows you to view your license, or to transfer a license to someone else.

Note: Before installing software, if an older version of the software already resides on your system, please uninstall the existing software using "Add/Remove Programs" on your PC.

Once the software has been downloaded, run it to install, following the installation instructions.

4 Locating the Installation Code

You will require an Installation Code to install the PROG license on your Multilink debug probe. The Installation Code can be found in the following locations:

- 1) The shipping confirmation email that was sent to you by PEMicro

- 2) The packing slip that was included in your shipment
- 3) Online. Log into our website at <http://www.pemicro.com>, and then:
 - a) Click “My Account”
 - b) Click “My Product Licenses” to view your purchased and registered licenses

5 Entering the Installation Code

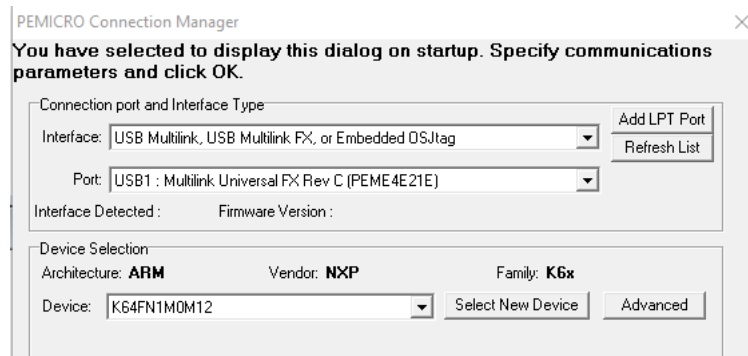
Before beginning, connect your Multilink to the PC.

You will be entering the installation code into the License Activation Form. There are two ways that you can access this form: via the Connection Manager, or via the Hardware License Manager.

1. Via the Connection Manager

Please follow these steps:

- Step 1. Launch the PEmicro software.
- Step 2. The Connection Manager will open.



- Step 3. Choose your interface type from the Interface drop-down menu.
- Step 4. Your Multilink should appear in the Port window. If multiple interfaces are connected, choose the appropriate one from the drop down list.

Note: If you wish to work with your target device once the license is installed, you may wish at this point to make other selections in the Connection Manager, but this is not required to simply activate the license.
- Step 5. Click the Connect (Reset) button at the bottom of the Connection Manager to connect to the Multilink.

Note: If your interface has older firmware you may be prompted to update its firmware. Accept and update (this may take a few moments).

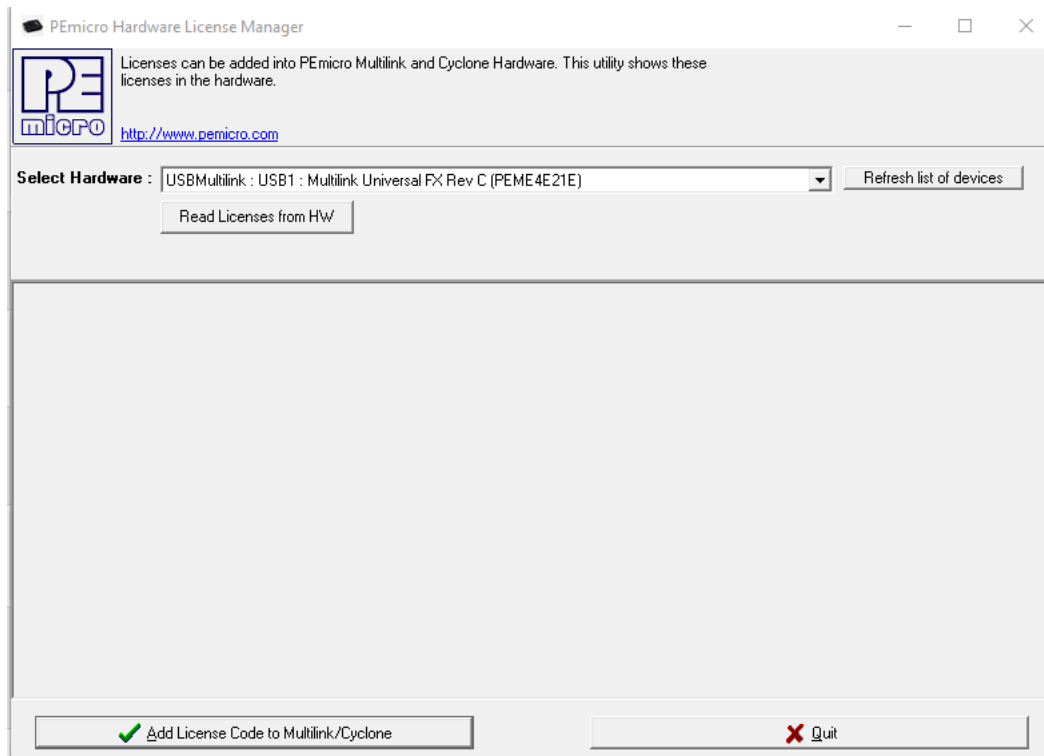


Note: When trying to access the License Activation Form via the Connection Manager, it is possible that the License Activation Form will not be presented if the software itself has been activated via a legacy license. In this case it is recommended to simply use the Hardware License Manager to install the license (see below).

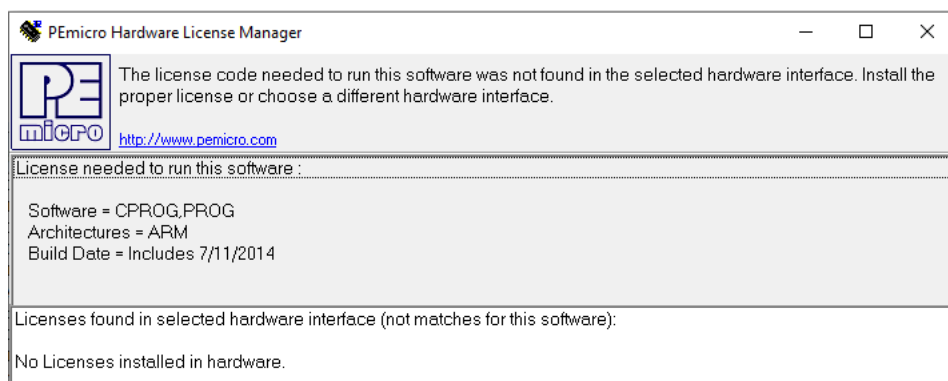
2. Via the PEmicro Hardware License Manager

For activating your PROG license (or viewing license information for a specific connected hardware interface).

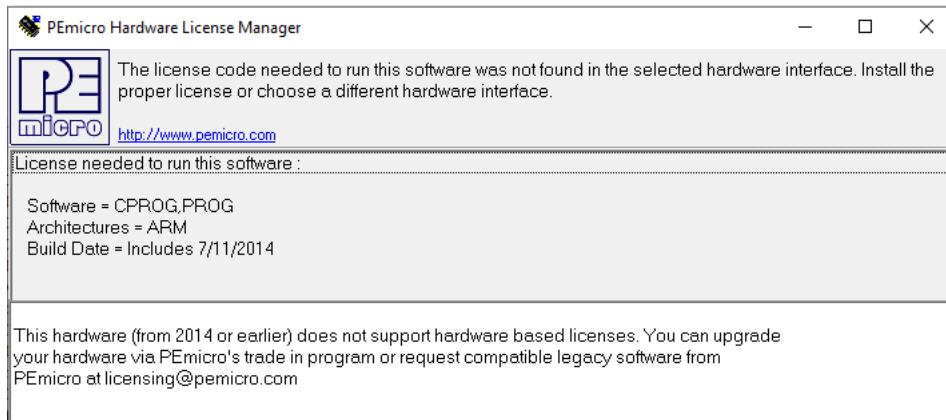
- Step 1. Run the PEmicro License Manager.
- Step 2. Choose your interface from the Select Hardware drop-down list:



- Step 3. a. If the Rev. of your Multilink is supported, a window like the following will be displayed, which shows the license that is required to run the software, as well as any other licenses present on the Multilink: Click the “Add License Code to Multilink/Cyclone” button at the bottom of the window to open the License Activation Form.



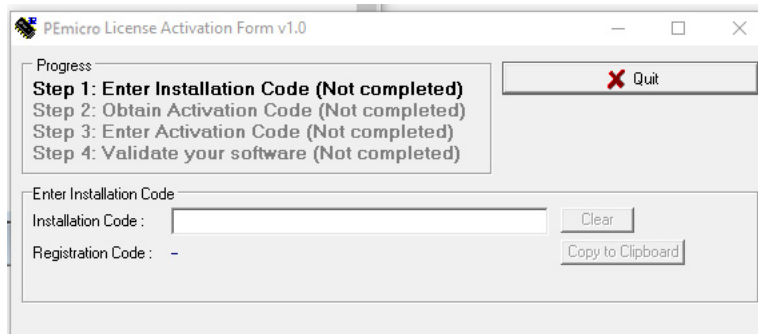
- b. If the Rev. of your Multilink is not supported, the following will be displayed instead:



The utility will direct you how to contact PEmicro to determine what the options are.

6 PEmicro License Activation Form

The PROG license will reside on a Multilink and cannot be transferred once it's activated, so before activation please make sure that you are installing the license on the specific interface that you wish to use.



- Step 1. Enter your Installation Code in the field provided and submit. When your Installation Code is accepted your Registration Code will appear on the following screen:

7 Completing Activation

First, enter your email address into the Email Address field. The License Activation Form then provides you with several ways to complete your PEmicro software activation.

1. Automatic Activation - Click the button to instantly complete activation. Requires an internet connection on the PC that you are operating.
2. Launch Web Browser - Opens the web page below and automatically enters your Registration Code. Requires an internet connection on the PC that you are operating.

P&E Product Registration & Activation Page

The first step for your P&E Product Activation has been completed.

Here is your activation code:

xxxx-xxxx-xxxx-xxxx-xxxx-xxxx-xxxx-xxxx-xxxx

Please copy-paste this Activation Code into the Activation Box of your P&E Software to finish the Product Activation process. You will also get an email with the Activation Code to keep for your records.

We thank you for your business!

3. Visit PEmicro Licensing Website - This address can be used to open the same web page as option #2. You will need to copy your registration code on your own. Requires an internet connection.
4. Contact PEmicro via Telephone - Our phone number is provided should you wish to activate your PEmicro soft-

ware over the phone.

If you have chosen an option that manually provides you with an Activation Code, once you receive it please enter it into the Activation Code field at the bottom of the form and submit.

Your Multilink is now activated and ready to use! If you should experience any difficulty with your activation, please feel free to contact us for assistance at www.pemicro.com.

8 Viewing Licenses on PEmicro Hardware

The Hardware License Manger also allows you to view the licenses that are installed on a specific, connected hardware interface. To accomplish this, choose your hardware interface from the Select Hardware drop-down and then click the “Read Licenses From HW” button. The licenses will then be displayed in the window below:

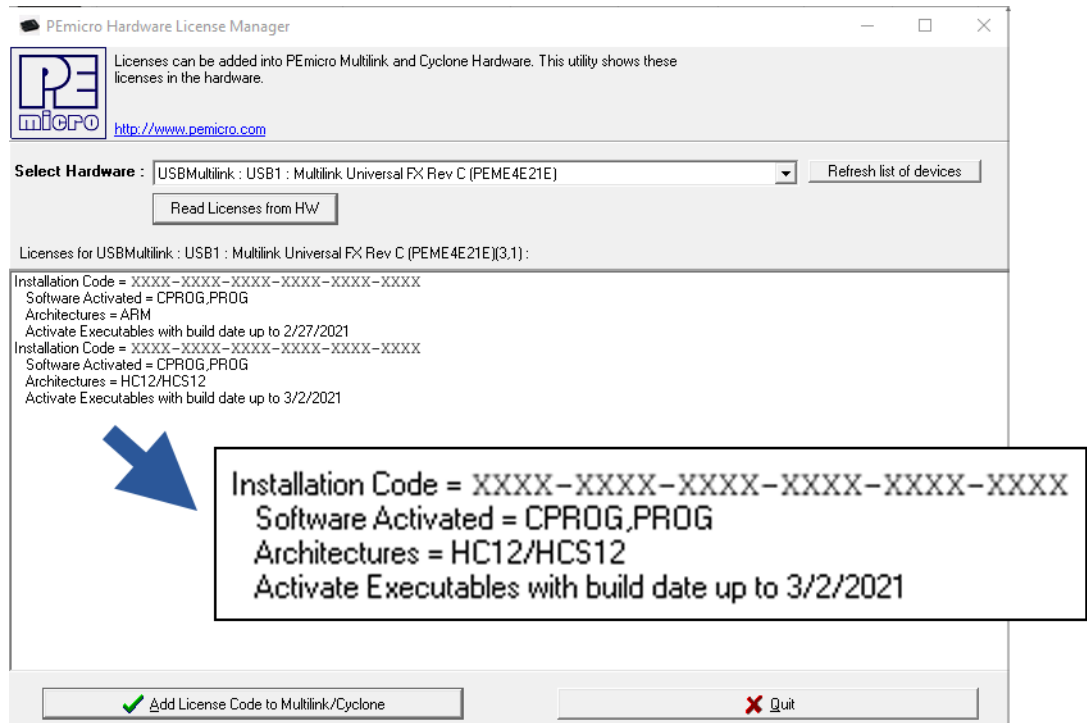


Figure 8-1: License To Activate Software

The information displayed includes your installation code, the software type, compatible architectures (if applicable), and the latest build date of software that will work with the license (if applicable).

The PROG license will work with versions of the software built up to one year after your license was purchased. During this period, the software can be updated free of charge. After one year, a discount is available when updating to the latest version of the software. After two years this discount is no longer available.

Feel free to contact PEmicro with any licensing questions at licensing@pemicro.com.