

UP TO 96% AFUE PERFORMANCE
COMFORTNET™ COMPATIBLE

Goodman®

Air Conditioning & Heating

GCVC96

HIGH-EFFICIENCY, VARIABLE-SPEED
TWO-STAGE GAS FURNACE



Thank goodness for Goodman.®



Air Conditioning & Heating

PRECISE COMFORT AND VALUE

When selecting a gas furnace for your home, you are often searching to find the best combination for an ideal level of home comfort. You want to find a gas furnace that offers exceptional, dependable, and stable performance for many, many years. Most importantly, you want the best value possible. Faced with the decision to find a trustworthy and reliable gas furnace that delivers quiet, energy-saving operation and outstanding long-term value, the Goodman® brand GCVC96 Two-Stage Gas Furnace may be your best option. Whether it's the coldest day of the year or any day of the year, with the Goodman GMVC96 Gas Furnace you'll be saying, **"Thank goodness for Goodman!"**



ENJOY THE COMFORT AND EFFICIENCY

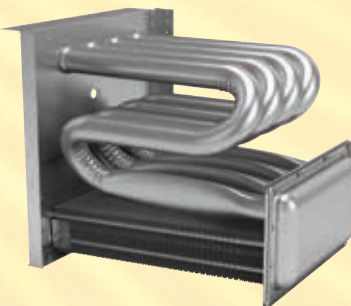
The Goodman brand GCVC96 High-Efficiency Gas Furnace with two-stage gas valve and a variable-speed circulating blower provides efficient and economical performance. Unlike single-stage gas furnaces that operate 'all on' or 'all off,' a Goodman brand two-stage gas furnace typically runs at the lowest possible speed to precisely maintain a constant, steady temperature in your home. A two-stage gas furnace optimizes its heating output to maximize indoor comfort and lower energy costs.

When operating at low-speed levels, your Goodman brand gas furnace consumes less energy to keep your home comfortable. In addition, the 96% AFUE rating on this gas furnace means that 96 cents of every \$1.00 of heating energy expense warms your home. Some older central heating systems are rated at 60% AFUE. The Department of Energy (DOE) established the AFUE (Annual Fuel Utilization Efficiency) system to calculate the annual operating cost of residential gas furnaces.

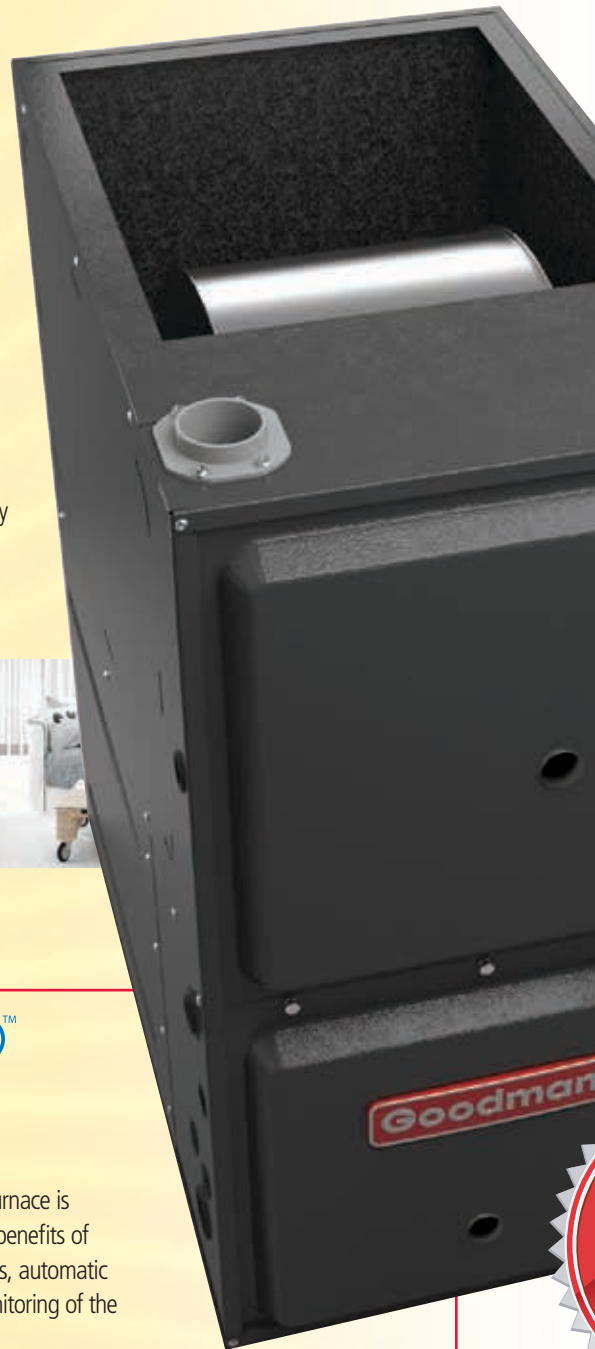


The Goodman brand GCVC96 Gas Furnace is ComfortNet™ compatible. Homeowner benefits of this system include: advanced diagnostics, automatic maintenance alerts, and continuous monitoring of the system's performance.

THE HEART OF COMFORT



The award-winning design of the primary heat exchanger in the Goodman brand GCVC96 Two-Stage Gas Furnace is unique. It's constructed from tubular aluminized-steel. The use of wrinkle-bend technology results in an extremely durable heat exchanger. A heat exchanger often is considered the essential component of any gas furnace. Additionally, this gas furnace has a stainless-steel secondary heat exchanger. This combination offers one of the best levels of reliability, durability, and efficiency you'll find within the Goodman brand.



IMPRESSIVE FEATURES AND BENEFITS:

GOODMAN® BRAND GCVC96

VARIABLE-SPEED TWO-STAGE GAS FURNACE

- ComfortNet™ Communicating Systems Compatible
- Heavy-duty aluminized-steel tubular heat exchanger
- Stainless-steel secondary heat exchanger
- Two-stage gas valve provides quiet, economical heating
- Durable silicon nitride igniter
- Quiet two-speed induced draft blower
- Self-diagnostic control board with constant memory fault code history output to a dual 7-segment display
- Color-coded low-voltage terminals with provisions for electronic air cleaner and humidifier
- Efficient and quiet variable-speed airflow system gently ramps up or down according to heating or cooling demand
- Multiple continuous fan speed options offer quiet air circulation
- Auto-comfort and enhanced dehumidification modes available



ENERGY STAR® and the ENERGY STAR mark are registered trademarks owned by the U.S. Environmental Protection Agency. ENERGY STAR products are third party certified by an EPA recognized Certification Body. Products that earn the ENERGY STAR prevent greenhouse gas emissions by meeting strict energy efficiency guidelines set by the U.S. Environmental Protection Agency.



Talk to your Goodman brand dealer about opportunities to optimize the efficiency of your new unit.

OUTSTANDING LIMITED WARRANTY* PROTECTION



* Complete warranty details available from your local dealer or at www.goodmanmfg.com. To receive the 10-Year Unit Replacement Limited Warranty, Lifetime Heat Exchanger Limited Warranty (good for as long as you own your home) and 10-Year Parts Limited Warranty, online registration must be completed within 60 days of installation. Online registration is not required in California or Quebec.


ADDITIONAL INFORMATION

Before purchasing this appliance, read important information about its estimated annual energy consumption, yearly operating cost, or energy efficiency rating that is available from your retailer.



Thank goodness for Goodman.®

Compare the GCVC96 Furnace advantages to other Goodman® brand furnace models:

| MODEL | HEATING EFFICIENCY AFUE | LIMITED PARTS WARRANTY* COVERAGE | | |  COMPATIBLE | MOTOR TYPE | GAS VALVE TYPE | TYPE OF IGNITER | TUBULAR DUAL-DIAMETER PRIMARY HEAT EXCHANGER | INSTALLATION OPTIONS |
|---------------|-------------------------|---|---|---------------------------------|---|---------------------------|------------------|------------------------|--|----------------------------|
| | | Lifetime Heat Exchanger Limited Warranty* | 10-Year Unit Replacement Heat Exchanger Limited Warranty* | 10-Year Parts Limited Warranty* | | | | | | |
| GMVM97 | Up to 97% | ● | ● | ● | ● | Variable-Speed ECM | Modulating | Silicon Nitride | Aluminized Steel | Upflow Horizontal |
| GCVM97 | Up to 97% | ● | ● | ● | ● | Variable-Speed ECM | Modulating | Silicon Nitride | Aluminized Steel | Downflow Horizontal |
| GMVC96 | Up to 96% | ● | ● | ● | ● | Variable-Speed ECM | Two Stage | Silicon Nitride | Aluminized Steel | Upflow Horizontal |
| GCVC96 | Up to 96% | ● | ● | ● | ● | Variable-Speed ECM | Two Stage | Silicon Nitride | Aluminized Steel | Downflow Horizontal |
| GMEC96 | Up to 96% | ● | ● | ● | | Multi Speed ECM | Two Stage | Silicon Nitride | Aluminized Steel | Upflow Horizontal |
| GMSS96 | Up to 96% | ● | ● | ● | | Multi Speed | Single Stage | Silicon Nitride | Aluminized Steel | Upflow Horizontal |
| GCSS96 | Up to 96% | ● | ● | ● | | Multi Speed | Single Stage | Silicon Nitride | Aluminized Steel | Downflow Horizontal |
| GMSS92 | Up to 92% | ● | | ● | | Multi Speed | Single Stage | Silicon Nitride | Aluminized Steel | Upflow Horizontal |
| GCSS92 | Up to 92% | ● | | ● | | Multi Speed | Single Stage | Silicon Nitride | Aluminized Steel | Downflow Horizontal |

*Complete warranty details available from your local dealer or at www.goodmanmfg.com. To receive the Lifetime Heat Exchanger Limited Warranty (good for as long as you own your own home), 10-Year Unit Replacement Heat Exchanger Limited Warranty and 10-Year Parts Limited Warranty, online registration must be completed within 60 days of installation. Online registration is not required in California or Quebec.



GOODMAN – A MEMBER OF DAIKIN GROUP

Daikin Industries, Ltd. (DIL) is a global Fortune 1000 company with more than 50,000 employees worldwide, making it the number one residential and commercial HVAC manufacturer in the world. DIL is engaged primarily in the development, manufacture, sales and aftermarket support of heating, ventilation, air conditioning and refrigeration equipment, refrigerants and other chemicals, as well as oil hydraulic products. DIL is headquartered in Osaka, Japan, has manufacturing operations in 18 countries and a sales presence in more than 90 countries.

The company provides innovative, premium quality indoor climate management solutions to meet the changing needs of residential, commercial and industrial customers.



Our continuing commitment to quality products may mean a change in specifications without notice.
© 2014 Goodman Manufacturing Company, L.P. · Houston, Texas

www.goodmanmfg.com

CB-GCVC96 10-14