

Fabric & Leather

Overview UK



FERM
LIVING

Made To Order & Customisation Concept

The Customisation Concept serves as an overview of the various textiles and types of leather available for Ferm Living's upholstered furniture. The materials have been handpicked so you can make our furniture your own.

One size doesn't fit all

Our homes are distinct, personal spaces that uniquely reflect the people who live there. They say the magic happens in the details, and often, that's what makes us fall in love with a specific piece that we want to move into our home. That is precisely why we have introduced the Ferm Living customisation concept, so that you can tailor selected pieces to fit your specific taste.

With our Made to Order products, you can choose between a wide variety of fabrics and leathers that we have selected among leading textile and leather suppliers, making it possible for you to customise your furniture with an array of materials and colour combinations.

The perfect fit

The majority of our sofas and seating collection are included in the customisation concept. Among them are Catena, Rico, Turn, Dase, Buur and family of Herman Chairs.

For our sofas, you can choose between an exciting variety of textiles that range from faded velvet, cottons, linens and wool, available in an array of colours and patterns from premium fabric and leather suppliers that include Kvadrat, Skandilock, Sørensen Leather and Gabriel.

For our Herman Chairs, there are a wide range of options available: customise everything from the frame to the colour of wooden backrest, and choose between various seat fabrics, woods and leathers to form your ideal chair.

To see a complete selection of our Made to Order materials, please refer to the Customisation Concept section of our Product Overview, where you can get an overview of all of the different customisation options that we offer.

We are also happy to upholster furniture using non-standard fabric options and customers' own materials (COM), subject to fabric approval and a minimum order quantity. For further information, please contact our Sales Representatives.

Fabric and Leather options

	Catena Collection	Rico collection	Herman collection	Turn collection	Dase Collectoin	Buur Collection
Price Group 1						
Cotton Linen	•			•	•	
Soft Bouclé	•	•	•		•	•
Soft FR		•				
Price Group 2						
Linara FR*	•			•		
Main Line Flax***		•	•		•	
Rich Velvet	•	•			•	•
Price Group 3						
Bouclé	•	•	•	•	•	•
Check	•					
Louisiana	•	•				•
Nordic Bouclé	•	•			•	•
Pasadena	•			•		
Utzon-Can Lis	•	•				
Price Group 4						
Classic Linen	•					
Leather - Ultra			•			
Tonus 4*		•	•	•	•	•
Wool Bouclé	•	•				
Price Group 5						
Hallingdal 65***	•	•	•	•	•	
Leather - Envy			•			
Price Group 6**						
Sheepskin		•				•

* Extra Crib5 FR treatment available, 10% upcharge

** Only available for Buur Lounge Chair, Rico Lounge Chair and Rico Pouf

*** Inherently Crib 5 compliant and therefore do not require treatment or incur any surcharge

Cotton Linen

Composition

60% cotton
40% linen

Fire rating

CAL117: not pass
EN 1021 1/2: not pass
BS 5852 0,1 C&M: pass with a
Crib5 interliner - on request
BS 5852 Crib5: not pass

Martindale

24.000

Price group

1

Care instructions

Vacuum frequently on medium power.
Remove wet stains by carefully dab-
bing with a lint-free cloth or sponge
wrung in warm detergent-free water.
If the stain remains, we recommend
professional dry cleaning.

Colour fastness to light

4 (8)

Pilling

4-5 (5)

Pass for

Catena
Dase
Turn



Natural

Soft Bouclé

Composition

90% polyester
5% cotton
5% polyacrylic

Fire rating

CAL117: pass
EN 1021 1/2: pass with treatment
BS 5852 0,1 C&M: pass with treatment
Crib5: not pass

Martindale

75.000

Price group

1

Care instructions

Vacuum frequently on medium power.
Remove wet stains by carefully dabbing with a lint-free cloth or sponge wrung in warm detergent-free water. If the stain remains, we recommend professional dry cleaning.

Colour fastness to light

5 (8)

Pilling

4 (5)

Pass for

Buur
Catena
Dase
Herman
Rico



Off-White/Sand



Natural



Dark Brown

Soft FR

Composition

95% polyester, 5% polyamide

Fire rating

EN 1021 1/2: not tested
CAL117: not tested
BS 5852 0,1 C&M: pass
BS 5852 Crib5: not pass

Martindale

45.000

Price group

1

Care instructions

Vacuum frequently on medium power.
Remove wet stains by carefully dabbing with a lint-free cloth or sponge wrung in warm detergent-free water. If the stain remains, we recommend professional dry cleaning.

Colour fastness to light

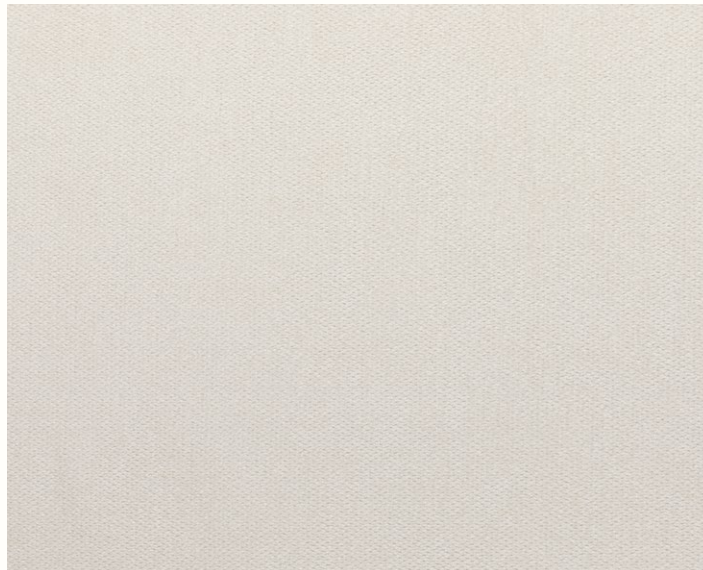
6 (8)

Pilling

4 (5)

Pass for

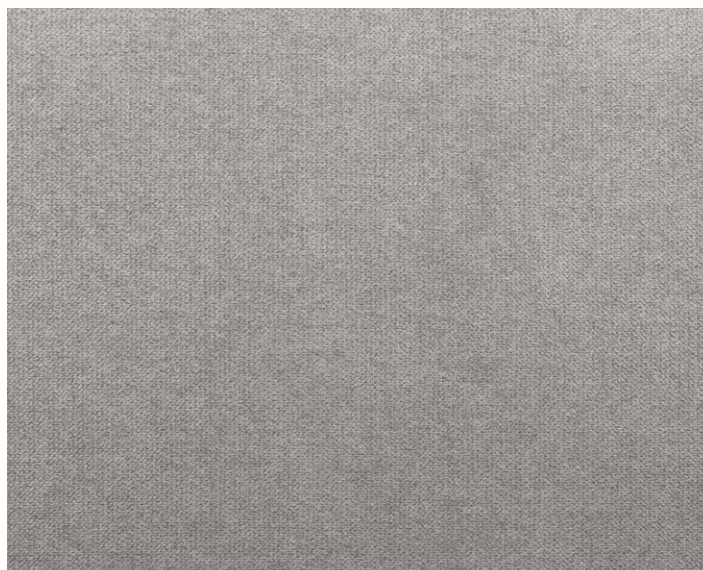
Rico



901 Off-White



904 Sand



805 Grey

Linara FR

By Romo

Composition
63% cotton
37% polyester

Fire rating
EN 1021 1/2: pass
CAL 117: not pass
BS 5852 0, 1 C&M: Pass
BS 5852 Crib 5: pass with treatment

Martindale
36.000

Price group
2

Care instructions
Vacuum frequently on medium power.
Remove wet stains by carefully dabbing with a lint-free cloth. If the stain remains, we recommend professional dry cleaning.

Colour fastness to light
5-6 (8)

Pass for
Catena
Turn

More information [here](#).

ferm LIVING colour selection (fabric swatches available)



B2494/93

B2494/66

B2494/89

All available colours



Linara FR

By Romo

Composition
63% cotton
37% polyester

Fire rating
EN 1021 1/2: pass
CAL 117: not pass
BS 5852 0, 1 C&M: Pass
BS 5852 Crib 5: pass with treatment

Martindale
36.000

Price group
2

Care instructions
Vacuum frequently on medium power.
Remove wet stains by carefully dabbing with a lint-free cloth. If the stain remains, we recommend professional dry cleaning.

Colour fastness to light
5-6 (8)

Pass for
Catena
Turn

More information [here](#).



Linara FR

By Romo

Composition
63% cotton
37% polyester

Fire rating
EN 1021 1/2: pass
CAL 117: not pass
BS 5852 0, 1 C&M: Pass
BS 5852 Crib 5: pass with treatment

Martindale
36.000

Price group
2

Care instructions
Vacuum frequently on medium power.
Remove wet stains by carefully dabbing with a lint-free cloth. If the stain remains, we recommend professional dry cleaning.

Colour fastness to light
5-6 (8)

Pass for
Catena
Turn

More information [here](#).



Linara FR

By Romo

Composition
63% cotton
37% polyester

Fire rating
EN 1021 1/2: pass
CAL 117: not pass
BS 5852 0, 1 C&M: Pass
BS 5852 Crib 5: pass with treatment

Martindale
36.000

Price group
2

Care instructions
Vacuum frequently on medium power.
Remove wet stains by carefully dabbing with a lint-free cloth. If the stain remains, we recommend professional dry cleaning.

Colour fastness to light
5-6 (8)

Pass for
Catena
Turn

More information [here](#).



Main Line Flax

By Camira

Composition
75% virgin wool
25% flax

Fire rating
CAL117: pass
EN 1021 1/2: pass,
BS 5852 0,1 C&M: pass
Crib5: pass

Martindale
50.000

Price group
2

Care instructions
Vacuum frequently on medium power.
Remove wet stains by carefully dab-
bing with a lint-free cloth or sponge
wrung in warm detergent-free water.
If the stain remains, we recommend
professional dry cleaning.

Colour fastness to light
4-5 (8)

Pilling
4 (5)

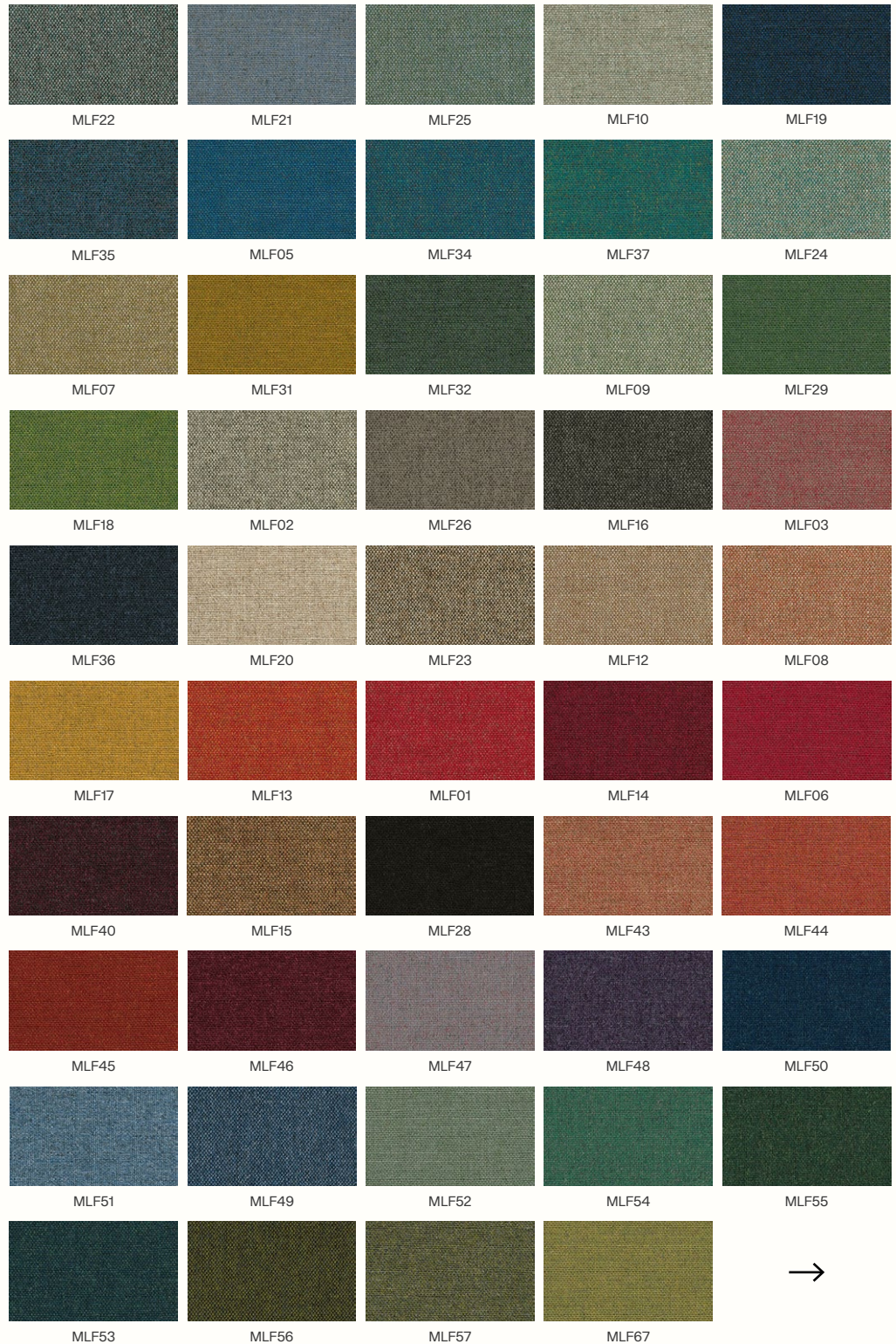
Pass for
Rico
Herman
Dase

More information [here](#).

firm LIVING colour selection (fabric swatches available)



All available colours



Main Line Flax

By Camira

Composition
75% virgin wool
25% flax

Fire rating
CAL117: pass
EN 1021 1/2: pass,
BS 5852 0,1 C&M: pass
Crib5: pass

Martindale
50.000

Price group
2

Care instructions
Vacuum frequently on medium power.
Remove wet stains by carefully dab-
bing with a lint-free cloth or sponge
wring in warm detergent-free water.
If the stain remains, we recommend
professional dry cleaning.

Colour fastness to light
4-5 (8)

Pilling
4 (5)

Pass for
Rico
Herman
Dase

More information [here](#).



Rich Velvet

Composition
100% polyester

Fire rating
CAL117: pass
EN 1021 1/2: pass
BS 5852 0,1 C&M: pass with treatment
BS 5852 Crib5: not pass

Martindale
170.000

Price group
2

Care instructions
Vacuum frequently on medium power.
Remove wet stains by carefully dabbing with a lint-free cloth or sponge wrung in warm detergent-free water.

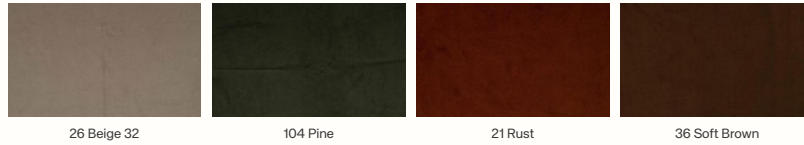
Colour fastness to light
6 (8)

Pilling
4-5 (5)

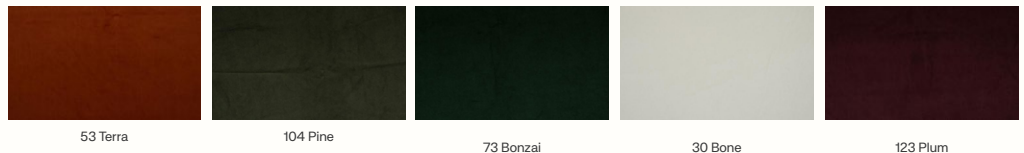
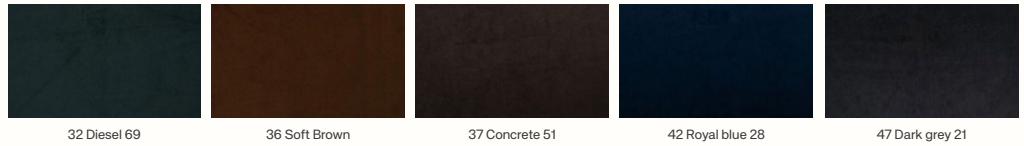
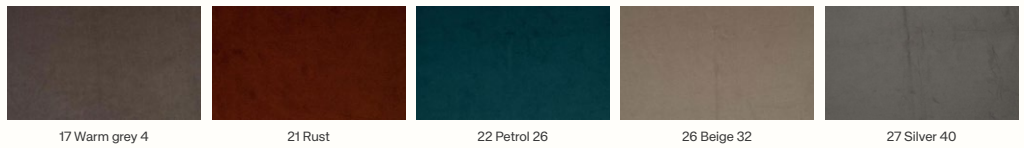
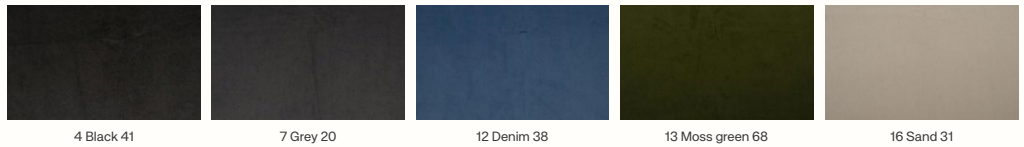
Pass for
Buur
Dase
Rico
Catena

More information [here](#).

firm LIVING colour selection (fabric swatches available)



All available colours



Drape

Composition

55% linen
45% jute

Fire rating

CAL117: pass
EN 1021 1/2: pass
BS 5852 0,1 C&M: pass
Crib5: not pass

Martindale

≥ 20.000

Price group

2

Care instructions

Vacuum frequently on medium power.
Remove wet stains by carefully dabbing with a lint-free cloth or sponge wrung in warm detergent-free water. If the stain remains, we recommend professional dry cleaning.

Colour fastness to light

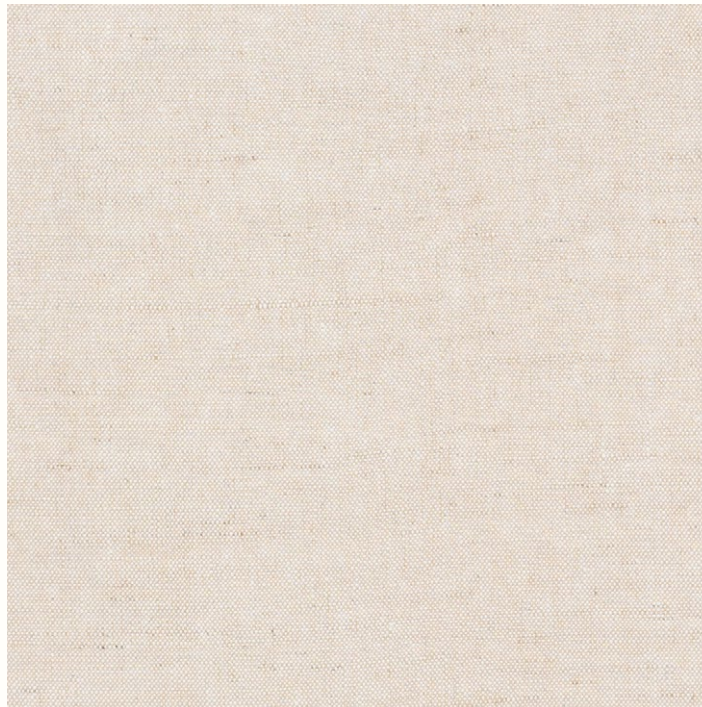
4 (8)

Pilling

≥ 4 (5)

Pass for

Catena - Loose Cover



Natural

Bouclé

Composition

35% acrylic
24% polyester
19% viscose
14% cotton
5% linen
3% other fibres

Fire rating

CAL117: pass
EN 1021 1/2: pass
BS 5852 0,1 C&M: pass
BS 5852 Crib5: not pass

Martindale

30.000

Price group

3

Care instructions

Vacuum frequently on medium power.
Remove wet stains by carefully dabbing with a lint-free cloth or sponge wrung in warm detergent-free water. If the stain remains, we recommend professional dry cleaning.

Colour fastness to light

4-5 (8)

Pilling

4 (5)

Pass for

Buur
Catena
Dase
Herman
Rico
Turn



Off-White



Sand

Check

Composition

30% wool
20% acrylic
15% cotton
15% polyester
10% linen
10% viscose

Fire rating

CAL117: pass
EN 1021 1/2: pass
BS 5852 0,1 C&M: pass
BS 5852 Crib5: not pass

Martindale

28.000

Price group

3

Care instructions

Vacuum frequently on medium power.
Remove wet stains by carefully dabbing with a lint-free cloth or sponge wrung in warm detergent-free water. If the stain remains, we recommend professional dry cleaning.

Colour fastness to light

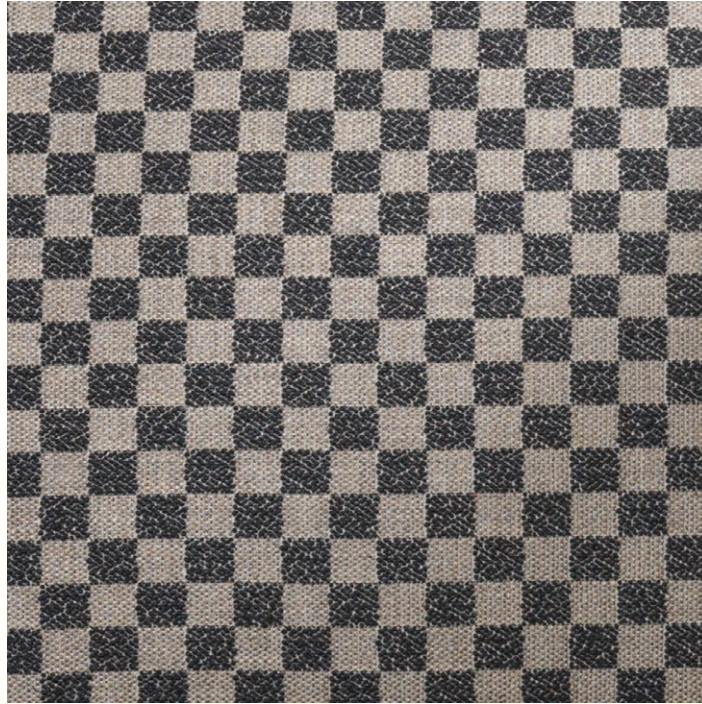
4-5 (8)

Pilling

4 (5)

Pass for

Catena



Sand/Black

Louisiana

Composition

20% wool
20% viscose
15% linen
15% cotton
15% polyester
15% acrylic

Fire rating

CAL117: pass
EN 1021 1/2: pass with treatment
BS 5852 0.1 C&M: pass with treatment
BS 5852 Crib5: pass with treatment

Martindale

30.000

Price group

3

Care instructions

Vacuum frequently on medium power.
Remove wet stains by carefully dabbing with a lint-free cloth or sponge wrung in warm detergent-free water. If the stain remains, we recommend professional dry cleaning.

Colour fastness to light

5 (8)

Pass for

Catena
Buur
Rico (not available for Rico Sofa Curve)



Sand/Black

Nordic Bouclé

Composition

30% wool
30% cotton
30% acrylic
5% polyester
5% other fibers

Fire rating

CAL117: pass
EN 1021 1/2: not tested
BS 5852 0,1 C&M: pass with treatment
Crib5: not pass

Martindale

25.000

Price group

3

Care instructions

Remove wet stains by carefully dabbing with a lint-free cloth or sponge wrung in warm detergent-free water. If the stain remains, we recommend professional dry cleaning.

Colour fastness to light

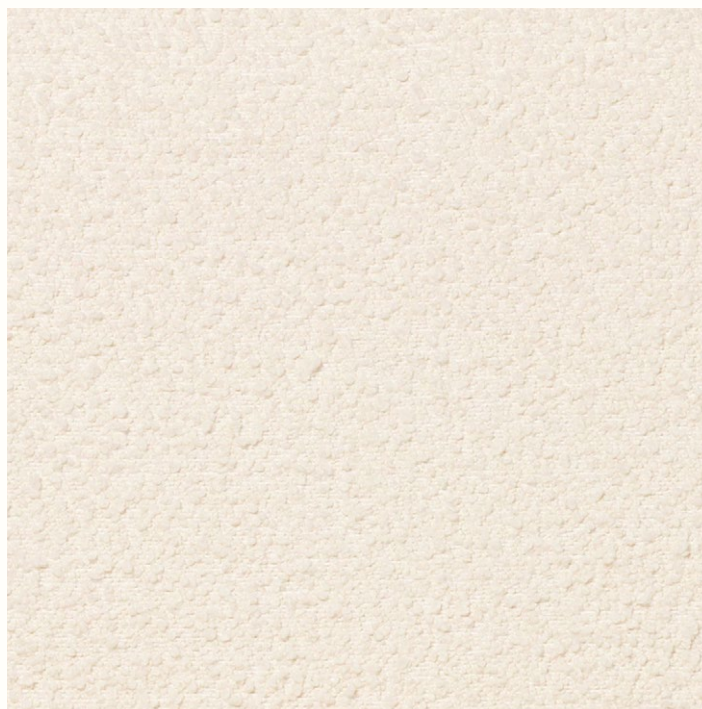
4 (8)

Pilling

3-4 (5)

Pass for

Buur
Catena
Dase
Rico



Off-white

Pasadena

Composition

34% linen
27% viscose
17% polyester
12% cotton
8% wool
2% acrylic

Fire rating

CAL117: pass
EN 1021 1/2: pass with treatment
BS 5852 0,1 C&M: pass with treatment
BS 5852 Crib5: not pass

Martindale

30.000

Price group

3

Care instructions

Vacuum frequently on medium power.
Remove wet stains by carefully dabbing with a lint-free cloth or sponge wrung in warm detergent-free water.
If the stain remains, we recommend professional dry cleaning.

Colour fastness to light

5 (8)

Pilling

4 (5)

Pass for

Catena
Turn



Sand/Black

Utzon-Can Lis

Composition

28% viscose
21% wool
21% acrylic
14% polyester
12% linen
4% cotton

Fire rating

CAL117: pass
EN 1021 1/2: pass with treatment
BS 5852 0,1 C&M: pass with treatment
Crib5: not pass

Martindale

35.000

Price group

3

Care instructions

Vacuum frequently on medium power.
Remove wet stains by carefully dabbing with a lint-free cloth or sponge wrung in warm detergent-free water. If the stain remains, we recommend professional dry cleaning.

Colour fastness to light

5 (8)

Piling

4 (5)

Pass for

Catena
Rico



Sand/Off-white

Classis Linen

Composition

100% Linen

Fire rating

EN 1021 1/2: pass

CAL117: pass

BS 5852 0, 1 C&M: pass

BS 5852 Crib5: not pass

Martindale

25.000

Price group

4

Care instructions

Vacuum frequently on medium power.

Remove wet stains by carefully dab-

bbling with a lint-free cloth or sponge

wrung in warm detergent-free water.

If the stain remains, we recommend

professional dry cleaning.

Colour fastness to light

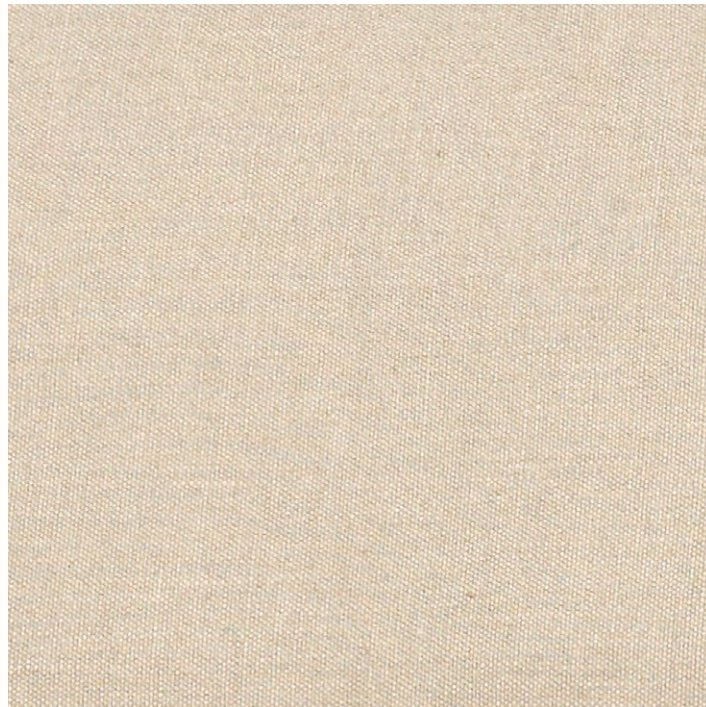
4 (8)

Pilling

3-4 (5)

Pass for

Catena



Natural

Tonus 4

By Kvadrat

Composition
90% new wool
10% helanca

Sustainability
EU Ecolabel
Greenguard Gold

Fire rating
CAL117: pass
EN 1021 1/2: pass
BS 5852 0,1 C&M: pass
BS 5852 Crib5: pass with treatment

Martindale
100.000

Price group
4

Care instructions
Vacuum frequently on medium power.
Remove wet stains by carefully dabbing with a lint-free cloth or sponge wrung in warm detergent-free water. If the stain remains, we recommend professional dry cleaning.

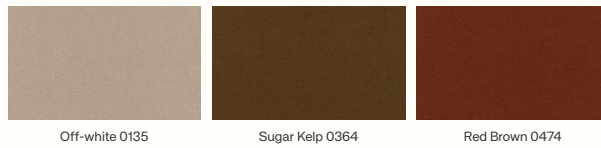
Colour fastness to light
5-7 (8)

Pilling
3 (5)

Pass for
Buur
Dase
Herman
Rico
Turn

More information [here](#).

ferm LIVING colour selection (fabric swatches available)



All available colours



Wool Bouclé

Composition

32% cotton
61% wool
7% nylon

Fire rating

CAL117: pass
EN 1021 1/2: pass
BS 5852 0,1 C&M: pass
BS 5852 Crib5: not pass

Martindale

25.000

Price group

4

Care instructions

Vacuum frequently on medium power.
Remove wet stains by carefully dabbing with a lint-free cloth or sponge wrung in warm detergent-free water. If the stain remains, we recommend professional dry cleaning.

Colour fastness to light

4 (8)

Pilling

4 (5)

Pass for

Catena
Rico



Off-white



Natural



Sugar Kelp

Hallingdal 65

By Kvadrat

Composition
70% new wool
30% viscose

Sustainability
EU Ecolabel
Greenguard Gold

Fire rating
CAL117: pass
EN 1021 1/2: pass
BS 5852 0,1 C&M:
pass
BS 5852 Crib5: pass

Martindale
100.000

Price group
5

Care instructions
Vacuum frequently on medium power.
Remove wet stains by carefully dab-
bing with a lint-free cloth or sponge
wring in warm detergent-free water.
If the stain remains, we recommend
professional dry cleaning.

Colour fastness to light
5-7 (8)

Pilling
3-4 (5)

Pass for
Catena
Dase
Herman
Rico
Turn
More information [here](#).

ferm LIVING colour selection (fabric swatches available)



All available colours



Hallingdal 65

By Kvadrat

Composition

70% new wool
30% viscose

Sustainability

EU Ecolabel
Greenguard Gold

Fire rating

CAL117: pass
EN 1021 1/2: pass
BS 5852 0,1 C&M: pass
BS 5852 Crib5: pass

Martindale

100.000

Price group

5

Care instructions

Vacuum frequently on medium power.
Remove wet stains by carefully dabbing with a lint-free cloth or sponge wrung in warm detergent-free water. If the stain remains, we recommend professional dry cleaning.

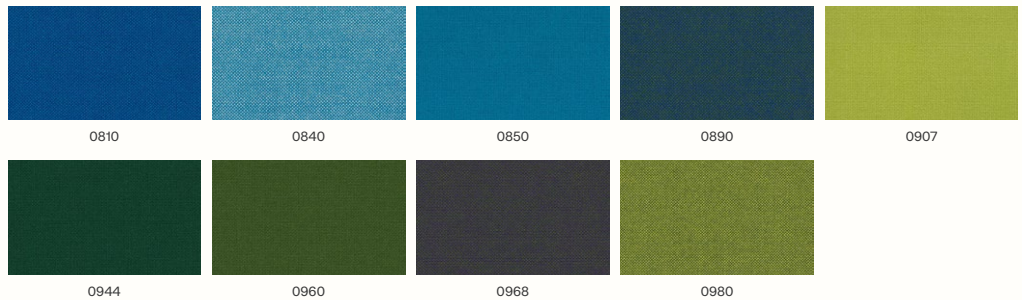
Colour fastness to light

5-7 (8)

Pass for

Catena
Dase
Herman
Rico
Turn

More information [here](#).



Leather - Envy

By Sørensen Leather

Composition
100% aniline leather

Fire rating
CAL117: pass
EN 1021 1/2: pass
BS 5852 0,1 C&M: not tested
BS 5852 Crib5: not pass

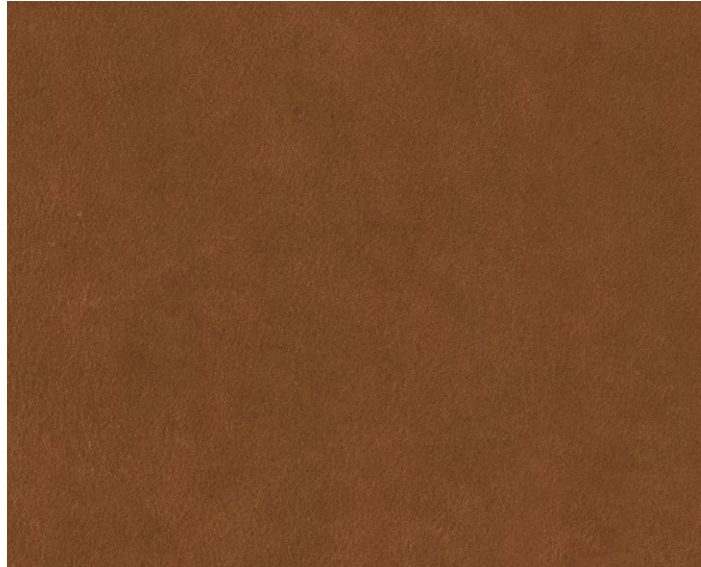
Price group
5

Care instructions
Vacuum frequently with a soft brush.
For stains use boiled water with natural soap. Whip 2-3 tablespoons of soap flakes in 1 litre water and only use the foam. Apply the foam with a soft cloth, let it dry and wipe off the leather thoroughly with a soft cotton cloth.

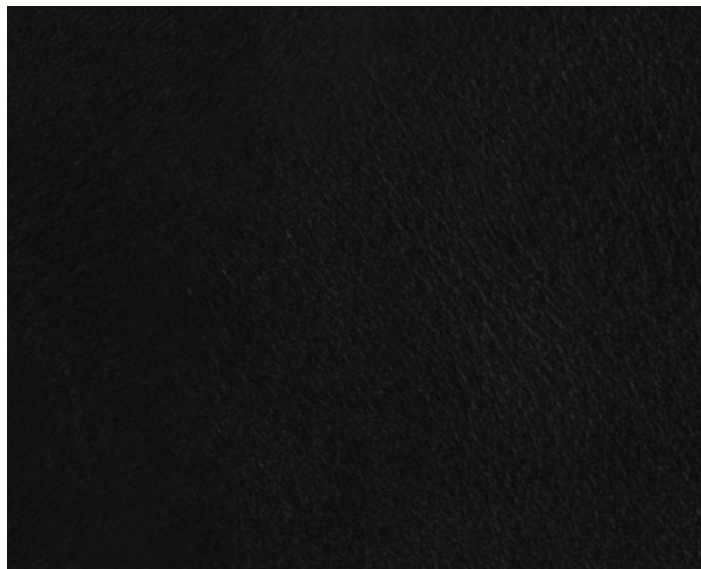
Colour fastness to light
3 (8)

Pass for
Herman

More information [here](#).



Cognac - 20320



Black - 20321

Sheepskin

By Skandilock

Composition

Sheepskin, Australian Crossbred,
Lamb/Sheep

Fire rating

CAL117: pass
EN 1021 1/2: pass
BS 5852 0,1 C&M: pass
BS 5852 Crib5: pass

Price group

6

Care instructions

Use a sponge, lukewarm water, and a mild wool shampoo for cleaning and immediately treat any spots with water. Keep the furniture out of direct sunlight to prevent color changes in the wool.

Colour fastness to light

4-5 (8)

Pass for

Rico Lounge Chair
Rico Pouf
Buur

More information [here](#).



09 Moonlight



07 Sahara

For more information, please contact
your Ferm Living Sales contact

Space to feel comfortably you