

Residential

Ducted LV Series

Product Flyer 2013/8

0.75 to 1.0 TON



COMFORT FOR LIFE



EXPERTISE AND INNOVATION

Daikin's slim duct systems offer a built-in solution with the benefits of duct free technology. Installed similar to a traditional ducted system, these systems are concealed and slim in size and are ideal for add-ons and zoning control.

ENERGY EFFICIENCY

Up to

15.5 SEER

10.4 HSPF

Integrated with an inverter "variable speed" compressor, systems deliver the capacity required to maintain desired room conditions, typically reducing energy consumption by 30% compared to traditional fixed speed systems. This technology minimizes temperature fluctuations and provides continuous cooling and heating comfort with maximum energy savings.

INDIVIDUAL COMFORT AND CONTROL

Daikin **remote** controllers provide individual temperature control at the click of the button. The slim duct systems are also compatible with the new Daikin ENVi intelligent thermostat, offering a more advanced solution, designed with energy savings performance in mind. With the freedom to access, program and control the system from a smart phone, tablet, or computer, users can have peace of mind - anytime, anywhere.



BUILT-IN RELIABILITY



All major components are engineered and manufactured by Daikin, ensuring maximum performance, reliability and efficiency.



The standard warranty provides a solid level of protection on the LV Series systems. Systems installed by an authorized Daikin 3D Dealer who has completed Daikin's advanced training can take advantage of Warranty Plus – the best warranty in the industry.

Find a Daikin Dealer near you at www.daikinac.com.



ADVANCED FEATURES THAT MAKE A DIFFERENCE

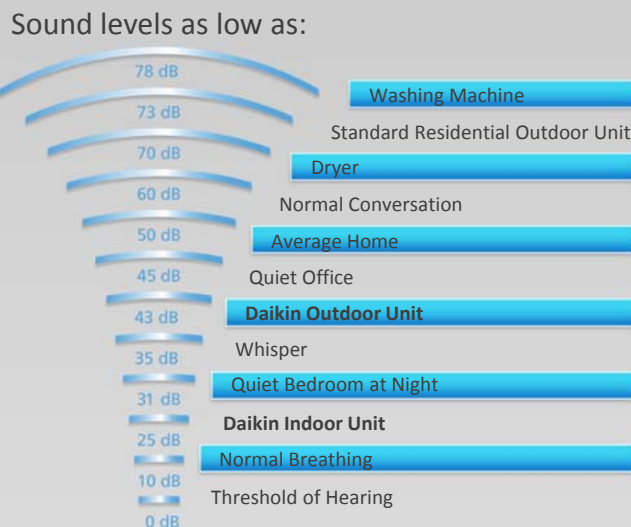
See the Difference



Only 7-7/8" in height, Daikin's built-in solution offers a concealed design that blends seamlessly into any room decor. Compact with design flexibility, these units are easily installed and require minimal ductwork, allowing greater energy efficiency while maintaining cooling and heating comfort.

Hear the Difference

Utilizing inverter technology to maintain comfort settings, Daikin systems most often operate at low speeds with indoor sound levels as low as 31 decibels (dB) and outdoor sound levels as low as 43 dB. Activate the indoor unit quiet operation and sound levels drop by 2-3 dB for gentler heating and cooling and operating sounds quieter than a whisper.



Breathe the Difference

Including a washable, mold proof air filter as standard, this pre-filter is impregnated with a safe, colorless, and odorless mold preventative, rendering it virtually resistant to mold. Offering installation on the rear or bottom suction side of the unit for simple installation and access, the filter may be easily cleaned with a vacuum cleaner and cool water, providing cleaner air in a reusable, user-friendly device.

FEATURES



Automatic Operation



Program Dry Function



Auto Fan Speed



Mold Proof Air Filter



Hot Start



Econo Mode



Outdoor Quiet Operation



Indoor Quiet Operation



Powerful Operation



LCD Wireless Remote



Remote Controller with Backlit Display



Auto Restart After Power Failure



Self Diagnosis with Digital Display



Anticorrosion Treatment



24 Hour On/Off Timer

LEADING TECHNICAL PERFORMANCE

LV Series Standard Efficiency System Performance

Indoor Model		FDXS09LVJU	FDXS12LVJU
Outdoor Model		RXS09LVJU	RXS12LVJU
Cooling Capacity (Rated)	Btu/h	8,500	11,500
Cooling Capacity (Min - Max)	Btu/h	4,400 - 8,500	4,800 - 11,500
Heating Capacity (Rated)	Btu/h	10,000	11,500
Heating Capacity (Min - Max)	Btu/h	4,400 - 10,000	4,800 - 11,500
SEER		15.1	15.5
COP		3.45	3.51
EER		11.2	9.1
HSPF		10.3	10.4
Power Supply		Single phase 60Hz 208/230V	
Minimum Circuit Amps	A	8.00	8.75
Maximum Overcurrent Protection	A	15.0	15.0
Power Consumption - Cooling	W	760	1,260
Power Consumption - Heating	W	850	960
Operating Current - Cooling	A	4.6 - 4.2	6.4 - 5.8
Operating Current - Heating	A	4.5 - 4.1	4.9 - 4.4

Indoor Units - FDXS Slim Duct Built-in Concealed Ceiling Units

Model Name		FDXS09LVJU	FDXS12LVJU
Moisture Removal	gal/h	2.5	4.0
Airflow-Wet (H/M/L)	CFM	305/280/260/235	305/280/260/235
Airflow-Dry (H/M/L)	CFM	305/280/260/235	305/280/260/235
Sound Pressure - Cooling (H/M/L)	dB(A)	35/33/31	35/33/31
Sound Pressure - Heating (H/M/L)	dB(A)	35/33/31	35/33/31
Piping Connections	Liquid (O.D.)	in.	Ø 1/4
	Gas (O.D.)	in.	Ø 3/8
	Condensate Drain	in.	Ø 25/32
Dimensions (H x W x D)	in.	7-7/8 x 27-9/16 x 24-7/16	
Net Weight	lbs.	47.0	47.0

Outdoor Units - RXS_LVJU Heat Pump

Model Name		RXS09LVJU	RXS12LVJU
Sound Pressure Level - Cooling (H/L)	dB(A)	47/43	49/44
Sound Pressure Level - Heating (H/L)	dB(A)	48/44	49/45
Operating Range - Cooling	°F DB	14 - 115	14 - 115
Operating Range - Cooling with Optional Wind Baffle	°F DB	0 - 115	0 - 115
Operating Range - Heating	°F DB	5 - 77	5 - 77
Max. Piping Length	ft.	65.6	65.6
Max. Piping Height	ft.	49.2	49.2
Dimensions (H x W x D)	in.	21-5/8 x 30-1/8 x 11-1/4	
Net Weight	lbs.	75.0	75.0

Options

Part Number

Indoor Unit	
Wired Controller	BRC944B2
Condensate Pump	DACA-CP1-1
Outdoor Unit	
Mounting Bracket	DACA-WB-3
Air Adjustment Grille (09/12 MBH)	KPW937C4

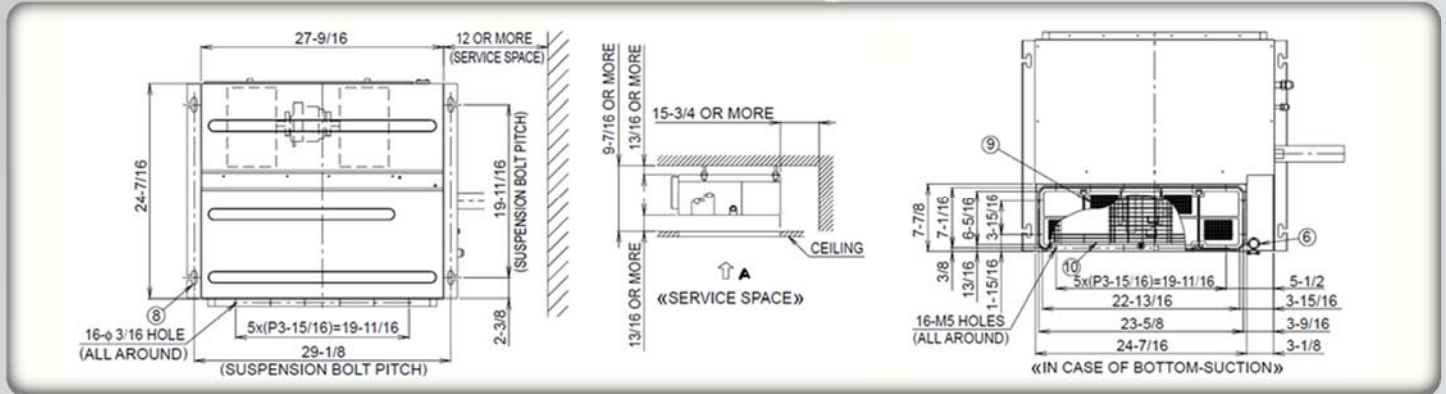
TIME-SAVING INSTALLATION AND EASE

Connected by a pair of refrigerant lines, few electrical connections, and little to no ductwork, indoor and outdoor units can be easily installed in existing spaces with minor disruption and often in a single day's work. The compact and lightweight designs combined with flexible piping and minimal wiring allow installation with minimal time and costs.

For FDXS09/12LVJU

Space required for installation (in.)

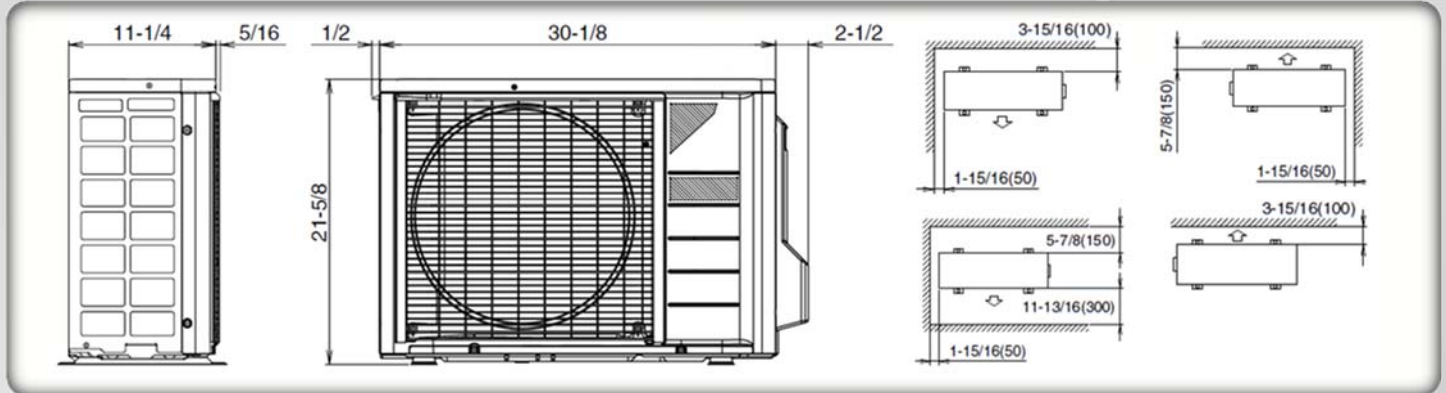
Wall height on air outlet side = Less than 47-1/4"



For RXS09/12LVJU

Space required for installation (in.)

Wall height on air outlet side = Less than 47-1/4"



Ducted LV Series

Product Flyer 2013/8

0.75 to 1.0 TON

WARNINGS:

- Always use a licensed installer or contractor to install this product. Do not try to install the product yourself. Improper installation can result in water or refrigerant leakage, electrical shock, fire or explosion.
- Use only those parts and accessories supplied or specified by Daikin. Ask a licensed contractor to install those parts and accessories. Use of unauthorized parts and accessories or improper installation of parts and accessories can result in water or refrigerant leakage, electrical shock, fire or explosion.
- Read the User's Manual carefully before using this product. The User's Manual provides important safety instructions and warnings. Be sure to follow these instructions and warnings.

For any inquiries, contact your local Daikin sales office.



Use of the AHRI Certified™ mark indicates a manufacturer's participation in the certification program. For verification of certification for individual products, go to www.ahridirectory.org

Daikin, Absolute Comfort, and its design, VRV, REFNET, Quaternity, Daikin Altherma are trademarks of Daikin Industries, LTD.

www.likin-daikin.com

Distributor or Dealer Information: