



Did you know you could help save the planet if you recycle your Peppa Pot wrapper properly? Break down the card parts and the inner plastic part that holds your Peppa Pig character and pop them in the recycling bins recommended by your local council - make sure you peel off any sticky tape as this can't go in!

Don't throw away the plastic dome as this can be used as a propagator for your plants to help them grow better.

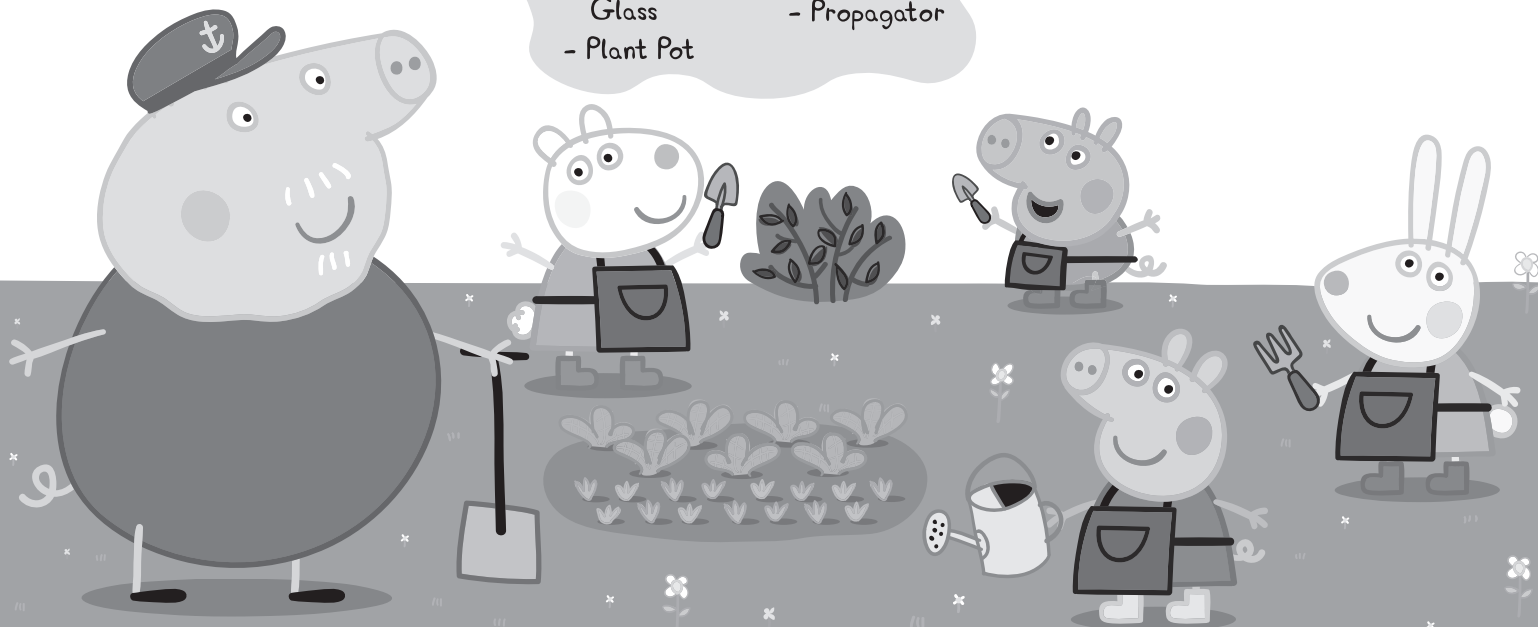
The only non-recycling part is the cellophane wrap, so stick that in with your normal rubbish.



Grow & Play Peppa Pots

Contents:

- George Figure
- Dinosaur
- Magnifying Glass
- Plant Pot
- Fence
- Tree
- Pea Seeds
- Propagator



WARNING!
 For Ages 4 years +
 Not suitable for children under 36 months due to small parts that may represent a choking hazard.
 Read the instructions before use, follow them and keep them for reference.
 Authorised Representative in the EU (for the purposes of Toy Safety Directive): Delphic HSE (Europe) B.V., The Base B, Everi van de Beekstraat 104, Schiphol, 1118CN, Netherlands.

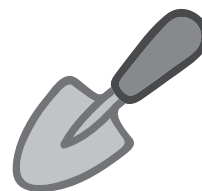


www.peppapig.com
www.interplayuk.com
interplay
 Designed and manufactured by:
 Interplay UK Ltd.
 Artisan, Hillbottom Road, High Wycombe, Bucks, HP12 4HJ
 Please retain our address for future reference.
 Copyright © 2020 Interplay UK Ltd.
 Made in China.
Product Code PP102 v1.0 2020



Step One

To start, pour half of the bag of pea seeds into cold water to let them soak for 24 hours before planting, this will help them to grow better. Seal the seed packet back up and store them in a dry and cool place for a second crop.



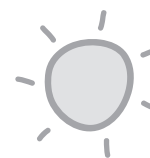
Step Two

Next, add soil to the pot. Fill about three quarters of the pot with some sieved soil or multi-purpose compost, which you can buy from garden centres. The soil or compost needs to be damp. Press the soil down to make a flat surface.



Step Three

Evenly scatter the peas in the pot and cover with a layer (about the thickness of a pea) of more soil or compost.



Step Four

Place the pot on a warm windowsill or similarly in a well-lit position and water regularly.



Step Five

At night when the temperature drops, use the plastic dome as a propagator to keep the seedlings warm and encourage them to grow.



Step Six

Your pea shoots should be ready to eat when they have grown approximately 10cm tall. Cut with scissors (an adult should help you with this).

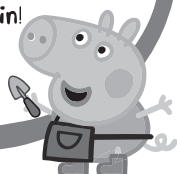
Give them a wash and they are ready to add to your food - like salads or in sandwiches!



When this crop has finished, tip the old soil with the roots into a large container and break up any large lumps with a trowel, in order to use again for a second crop. Or alternatively put the roots in your wormery (worms like dead plants very much!) or compost heap, if you have one, and use fresh soil for the second crop.

Top Tip!

- Keep the compost moist.
- Peas are rich in Vitamin C, A, and Protein!



Growing Tomatoes

Next time you're eating a tomato, scoop out a few seeds and push them into the soil in your pot a few inches apart from each other until they're covered.

Keep the soil moist and wait for the seeds to sprout, tomatoes grow very fast!

Once your seeds have sprouted transplant them to a larger pot and make sure they have something to climb up like a stake.

In a few months' time, your plant will start sprouting flowers and these will turn into tomatoes!

