

POLYGON

DESIGN : VINCENT CANTAERT & BARBARA WIDININGTAS



MIT02 POLYGON SIDE TABLE S (HPL)

L	19"	49 CM	NW	9 LB	4 KG
W	16.5"	42 CM	GW	15 LB	7 KG
H	18"	45CM	VOL	0.12 M3	
			PU	1 / BOX	



MIT03 POLYGON SIDE TABLE M (HPL)

L	23.5"	60 CM	NW	11 LB	5 KG
W	20.5"	52 CM	GW	18 LB	8 KG
H	18"	45 CM	VOL	0.18 M3	
			PU	1 / BOX	



MIT02 POLYGON SIDE TABLE L (HPL)

L	29.5"	75 CM	NW	66 LB	30 KG
W	26.5"	68 CM	GW	75 LB	34 KG
H	18"	45 CM	VOL	0.28 M3	
			PU	1 / BOX	

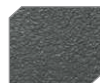
POWDER COATING COLORS
CATEGORY A - SAND
MATT (GLOSS 15%) / SAND TEXTURED
APPLICATION : ALUMINUM



WHITE
F03



BLACK
F05



ANTHRACITE
F09



TAUPE
F07

CATEGORY B - GLOSS
GLOSS 55% / SMOOTH
APPLICATION : ALUMINUM



INK BLACK
F04



URBAN WHITE
F35



FIRE ENGINE
RED
F15



INDUSTRIAL
YELLOW
F16



ORANGE CORAL
F51

CATEGORY C - HIGH GLOSS
GLOSS 85% - 90% / SMOOTH
APPLICATION : ALUMINUM



WHITE
HIGH GLOSS
F02

TOP
HIGH PRESSURE
LAMINATE (HPL)



SANDSTONE
T36



ALPES WHITE
T38



SLATE
T37



SCRATCHED GREY
T39



LATERITE
T52