



LION BRAND® WOOL-EASE
Knit 'Tree of Life' Sweater

Catalog Pattern: 749



LION BRAND® WOOL-EASE

Knit 'Tree of Life' Sweater

Pattern: 749

SKILL LEVEL: *Experienced*

SIZE

S (M, L)

Finished chest measurements 48 (54, 57)"

MATERIALS

- LION BRAND Wool-Ease
12 (13, 14) balls #403 Mushroom
Or color of your choice
- Size 6 (4 mm) and 8 (5 mm) knitting needles OR SIZE TO OBTAIN GAUGE
- Cable needle
- Stitch markers
- Eight 1" (25 mm) buttons

GAUGE

14 sts + 20 rows = 4" (10 mm) over basketweave pat using 2 strands of yarn.
TO INSURE PROPER SIZE, BE SURE TO CHECK YOUR GAUGE.

NOTES

- Sweater is worked with 2 strands of yarn held tog.
- Fronts are knitted before Back since tree chart on front may affect gauge.

STITCH GLOSSARY

2/2 Purl Left Cross (2/2 PLC) Place 2 sts on cn to front, p 2, k 2 from cn.

2/2 Purl Right Cross (2/2 PRC) Place 2 sts on cn to back, k 2, p 2 from cn.

2/1 Purl Left Cross (2/1 PLC) Place 2 sts on cn to front, p 1, k 2 from cn.

2/1 Purl Right Cross (2/1 PRC) Place 1 st on cn to back, k 2, p 1 from cn.

Purl Left Cross (PLC) Place 1 st on cn to front, p 1, k 1 from cn.

Purl Right Cross (PRC) Place 1 st on cn to back, k 1, p 1 from cn.

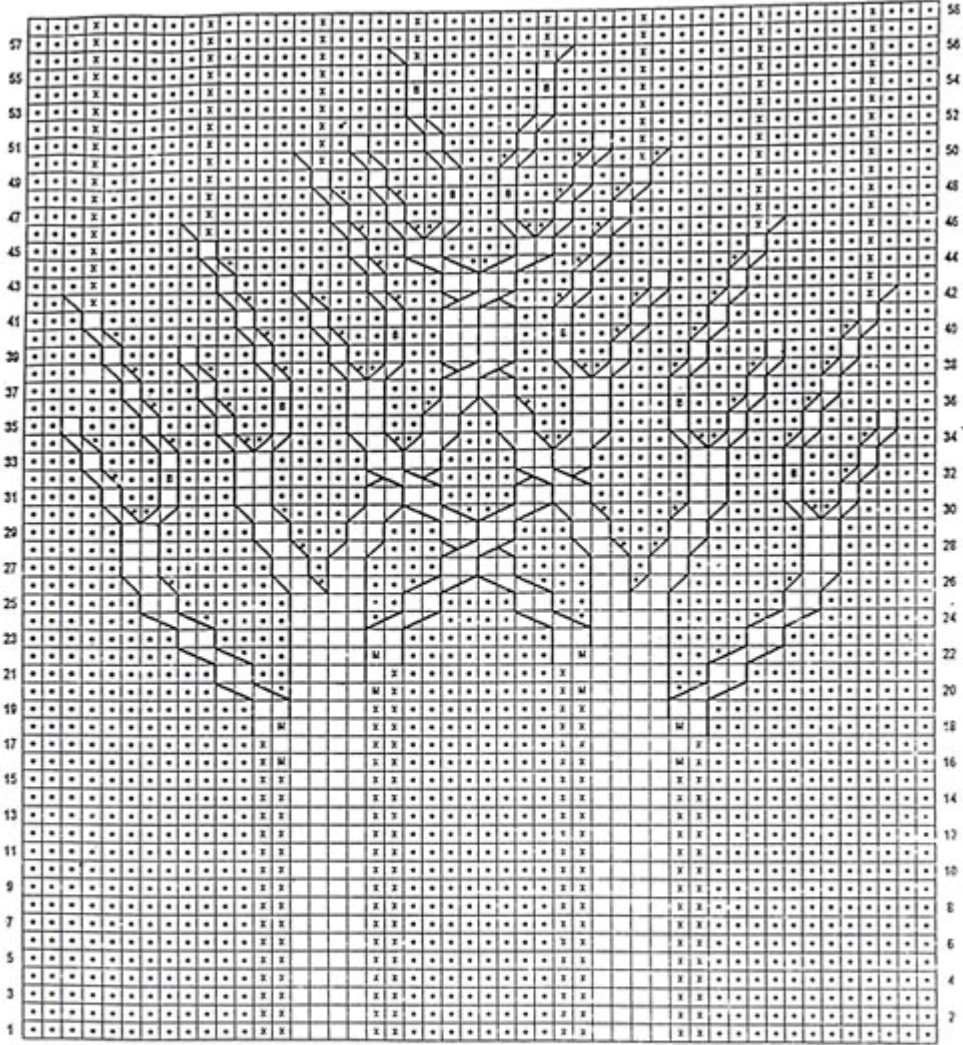
Right Cross (RC) Place 2 sts on cn to back, k 2, k 2 from cn.

Left Cross (LC) Place 2 sts on cn to front, k 2, k 2 from cn.

© 1998-2005 Lion Brand Yarn Company, all rights reserved
34 West 15th Street, New York, New York 10011
Call TOLL-FREE 1-800-258-YARN

Make 1 (M1) An increase worked by lifting horizontal thread lying between needles and placing it onto left needle. Work this new stitch through the back loop.

WOOL-EASE* "TREE OF LIFE" SWEATER # 749



- Key**
- No Stitch
 - P1 RS; K1 WS
 - K1 RS; P1 WS
 - Make 1 (inc 1 st between last st worked and next st)
 - P2 tog
 - P2 tog B (in back of stitch)
 - K1B (in back of stitch)

© 1998-2005 Lion Brand Yarn Company, all rights reserved
 34 West 15th Street, New York, New York 10011
 Call TOLL-FREE 1-800-258-YARN

PATTERN STITCH**Twin Trees (worked across 40 sts and increased to 48 sts)****Rows 1, 3, 5, 7, 9, 11, 13 & 15 (WS)** K 12, p 4, k 8, p 4, k 12 -- 40 sts.**Rows 2, 4, 6, 8, 10, 12 & 14 (RS)** Knit the knit sts and purl the purl sts.**Row 16** P 12, M1, k 4, p 8, k 4, M1, p 12 -- 42 sts.**Row 17 & all remaining odd number rows (WS)** Knit the knit sts and purl the purl sts.**Row 18** P 12, k 1, M1, k 4, p 8, k 4, M1, k 1, p 12 -- 44 sts.**Row 20** P 10, 2/2 PRC, k 4, M1, p 8, M1, k 4, 2/2 PLC, p 10 -- 46 sts.**Row 22** P 8, 2/2 PRC, p 2, k 4, M1, k 1, p 8, k 1, M1, k 4, p 2, 2/2 PLC, p 8 -- 48 sts.**Row 24** P 6, 2/2 PRC, p 4, k 4, 2/2 PLC, p 4, 2/2 PRC, k 4, p 4, 2/2 PLC, p 6.**Row 26** P 5, 2/1 PRC, p 5, 2/1 PRC, k 2, p 2, 2/2 PLC, 2/2 PRC, p 2, k 2, 2/1 PLC, p 5, 2/1 PLC, p 5.**Row 28** P 5, k 2, p 5, 2/1 PRC, p 1, 2/1 PLC, p 3, RC, p 3, 2/1 PRC, p 1, 2/1 PLC, p 5, k 2, p 5.**Row 30** P 4, PRC, PLC, p 3, 2/1 PRC, p 3, 2/1 PLC, 2/2 PRC, 2/2 PLC, 2/1 PRC, p 3, 2/1 PLC, p 3, PRC, PLC, p 4.**Row 32** P 3, PRC, p 2, k1b, p 3, k 2, p 5, LC, p 4, LC, p 5, k 2, p 3, k1b, p 2, PLC, p 3.**Row 34** (P 2, PRC) 3 times, PLC, p 3, 2/1 PRC, 2/1 PLC, p 2, 2/1 PRC, 2/1 PLC, p 3, PRC, (PLC, p 2) 3 times.**Row 36** P 5, (PRC, p 2) twice, k1b, p 3, k 2, p 2, 2/1 PLC, 2/1 PRC, p 2, k 2, p 3, k1b, (p 2, PLC) twice, p 5.**Row 38** P 4, (PRC, p 2) 3 times, PRC, PLC, p 2, RC, p 2, PRC, (PLC, p 2) 3 times, PLC, p 4.**Row 40** P 3, PRC, p 6, (PRC, p 2) twice, k1b, p 2, k 4, p 2, k1b, (p 2, PLC) twice, p 6, PLC, p 3.**Row 42** P 2, p2tog, p 6, (PRC, p 2) 3 times, RC, (p 2, PLC) 3 times, p 6, p2tog tbl, p 2 -- 46 sts.**Row 44** P 8, PRC, p 6, PRC, p 1, 2/2 PRC, 2/2 PLC, p 1, PLC, p 6, PLC, p 8.**Row 46** P 7, p2tog, p 6, PRC, p 1, PRC, PLC, p 2, PRC, PLC, p 1, PLC, p 6, p2tog tbl, p 7 -- 44 sts.

© 1998-2005 Lion Brand Yarn Company, all rights reserved
 34 West 15th Street, New York, New York 10011
 Call TOLL-FREE 1-800-258-YARN

Row 48 P 13, PRC, p 1, PRC, p 2, k1b, p 2, k1b, p 2, PLC, p 1, PLC, p 13.

Row 50 P 12, p2tog, p 1, (PRC, p 2) twice, PLC, p 2, PLC, p 1, p2tog tbl, p 12 -- 42 sts.

Row 52 P 17, PRC, p 4, PLC, p 17.

Row 54 P 17, k1b, p 6, k1b, p 17.

Row 56 P 16, p2tog, p 6, p2tog tbl, p 16 -- 40 sts.

Row 58 P 40.

Basketweave Pattern (worked over an even number of sts)

Rows 1 and 3 (RS) *K 2, p 2; rep from * across.

Rows 2 and 5 *P 2, k 2; rep from * across.

Row 4 *K 2, p 2; rep from * across.

Row 6 *K 2, p 2; rep from * across.

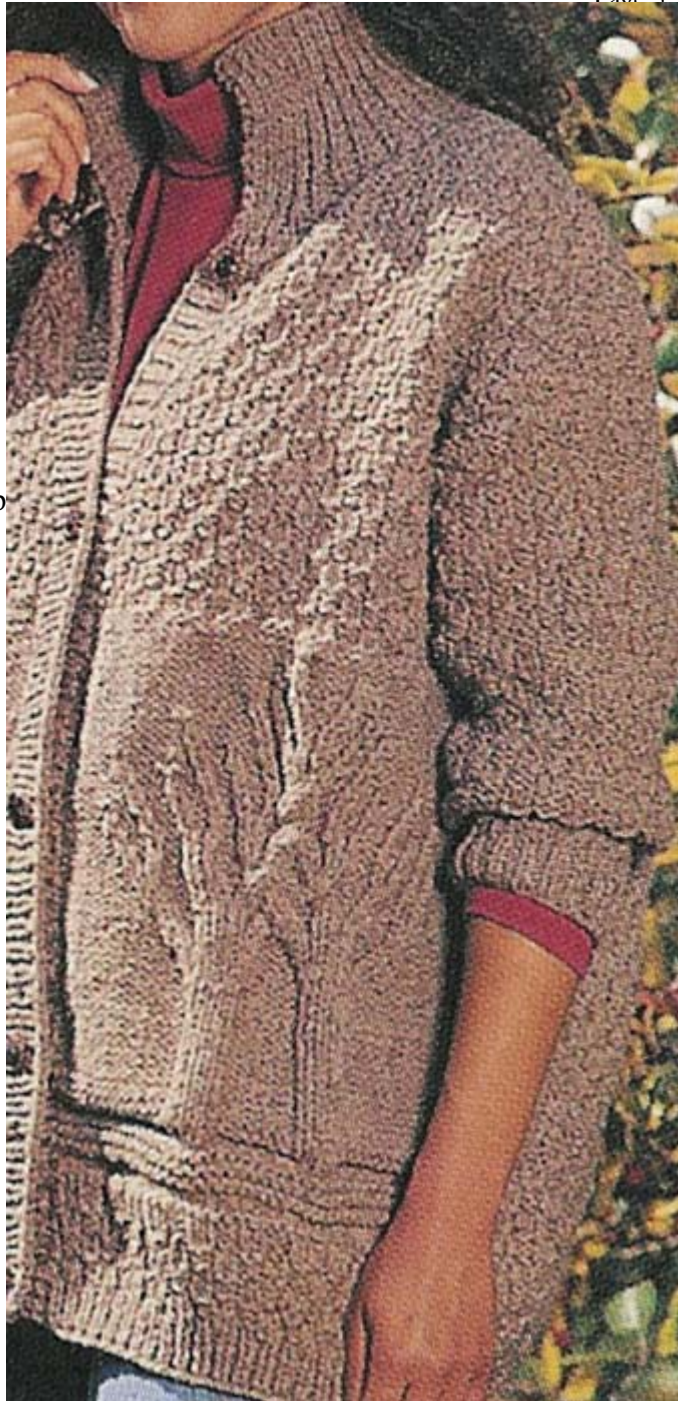
Rep Rows 1-6 for basketweave pat.

**SWEATER
LEFT FRONT**

With 2 strands of yarn held tog and smaller needles, cast on 42 (46, 50) sts. Work in k 1, p 1 rib for 2", ending with a WS row. Change to larger needles. Work in

Basketweave Pat for 12 rows. Beg with a k row, work in St st for 3 rows; then work 6 rows in garter st (= k every row); then beg with a p row, work in St st for 4 rows, ending with a RS row.

Tree of Life Pat: Next row (WS) K 1 (3, 5), place marker, work Tree of Life Pat Row 1 across next 40 sts, place marker, k 1 (3, 5). Cont as est working Tree of Life Pat within markers and the first 1 (3, 5) and the last 1 (3, 5) sts in rev St st until 58 rows have been completed, then change to Basketweave Pat; AT THE SAME TIME, when piece meas



17" from beg, **shape armholes** as foll: Cont in Basketweave Pat, binding off at armhole edge at beg of every other row: 3 sts once, then 2 sts twice, then 1 st once -- 34 (38, 42) sts. Cont even in Basketweave Pat until armhole meas 6 (6 1/2, 7)", ending with a RS row.

Shape neck and shoulder Cont in Basketweave Pat, bind off at neck edge at beg of every other row: 3 sts twice, 2 sts 3 times, then 1 st once; **AT THE SAME TIME**, when armholes meas 8 (8 1/2, 9)", bind off at armhole edge at beg of every other row: 7 (8, 10) sts twice, then 7 (9, 9) sts once.

RIGHT FRONT

Work to correspond to Left Front, rev shaping.

BACK

With 2 strands of yarn held tog and smaller needles, cast on 84 (92, 100) sts. Work in k 1, p 1 rib for 2". Change to larger needles. Work in Basketweave pat until piece meas same as Left Front to armholes, ending with a WS row.

Shape armholes Cont in Basketweave Pat, bind off 3 sts at beg of next 2 rows, 2 sts at beg of next 4 rows, then 1 st at beg of next 2 rows -- 68 (76, 84) sts. Cont even in Basketweave pat until armholes meas 7 1/2 (8, 8 1/2)".

Shape neck: Next row Work across 24 (28, 32) sts, join another 2 strands of yarn and bind off center 20 sts, work to end. Working both sides at the same time with separate balls of yarn, bind off at each neck edge at beg of every other row: 2 sts once, then 1 st once -- 21 (25, 29) sts each side. Cont even in Basketweave pat until armholes meas same as Front to shoulder.

Shape shoulders: Bind off at each armhole edge at beg of every other row: 7 (8, 10) sts twice, then 7 (9, 9) sts once.

SLEEVES

With 2 strands of yarn held tog and smaller needles, cast on 40 sts. Work in k 1, p 1 rib for 2". Change to larger needles. Work in Basketweave Pat; **AT THE SAME TIME**, **shape sides:** Inc 1 st at each side every 4 rows 9 (11, 13) times working added sts into Basketweave Pat -- 58 (62, 66) sts. Work even in Basketweave Pat until Sleeves meas 12 1/2" from beg or desired length to underarm.

Shape cap: Maintaining Basketweave Pat, bind off 3 sts at beg of next 4 rows, 2 sts at beg of next 4 rows, then dec 1 st at each edge every other row 1 (2, 3) times. Bind off rem 36 (38, 40) sts.

FINISHING

Sew shoulder seams.

© 1998-2005 Lion Brand Yarn Company, all rights reserved
34 West 15th Street, New York, New York 10011
Call TOLL-FREE 1-800-258-YARN

Left Front Band

With 2 strands of yarn held tog and smaller needles, beg at Left Front neck edge, PU and k approx 94 (98, 102) sts along Left Front edge. Work in k 1, p 1 rib for 8 rows. Bind off in rib. Place markers on Left Front Band for 8 buttons; with first 1/2" above lower edge and the last 1/2" below neck edge.

Right Front Band

Work as for Left Front Band for 4 rows.

Next row *Rib to next marker, (k2tog, yo) for buttonhole; rep from * 7 more times, rib to end. Cont in rib for 3 more rows. Bind off in rib.

Collar

With RS facing, using 2 strands of yarn held tog and smaller needles, PU and k approx 67 (71, 75) sts around neck edge including tops of front bands. Work in k 1, p 1 rib for 5". Bind off in rib. Set in Sleeves. Sew side and Sleeve seams. Sew on buttons.

ABBREVIATIONS:	
approx = approximately	p2togb = purl 2 together in back
beg = begin(ning)	PU = pick up
cont = continu(e)(ing)	rem = remain(ing)
cn = cable needle	rep = repeat
dec = decreas(e)(s)(ing)	rev = revers(e)(ing)
est = established	RS = right side
foll = follow(s)(ing)	st(s) = stitch(es)
inc = increas(e)(s)(ing)	tbl = through back loop
k = knit	tog = together
k1b = knit 1 in back	WS = wrong side
p = purl	yo = yarn over
pat = pattern	

**Wool-Ease® (Article #620) is a 4-ply worsted-weight yarn. It has the feel, warmth and softness of wool with the easy care of acrylic.*

- *Solid, Heather, Twist: 3 oz/85g (197 yd/180m) balls 80% acrylic, 20% wool*
- *Sprinkles, Wheat, Mushroom, Rainbow Mist: 3 oz/85g (197 yd/180m) balls 86% acrylic, 10% wool, 4% rayon*
- *Glitter/Multi-colors: 2.5 oz./70g (162 yd/146m) balls 78% acrylic, 19% wool, 3% polyester*
- *Frosts: 2.5 oz./70g (162 yd/146m) balls 70% acrylic, 20% wool, 10% polyamide*
- *Prints: 2.5 oz/70g (162 yd/146m) balls 80% acrylic, 20% wool*

Every effort has been made to have the knitting and crochet instructions accurate and complete. We cannot be responsible for variance of individual knitters and crocheters, human errors, or typographical mistakes.

© 1998-2005 Lion Brand Yarn Company, all rights reserved
34 West 15th Street, New York, New York 10011
Call TOLL-FREE 1-800-258-YARN