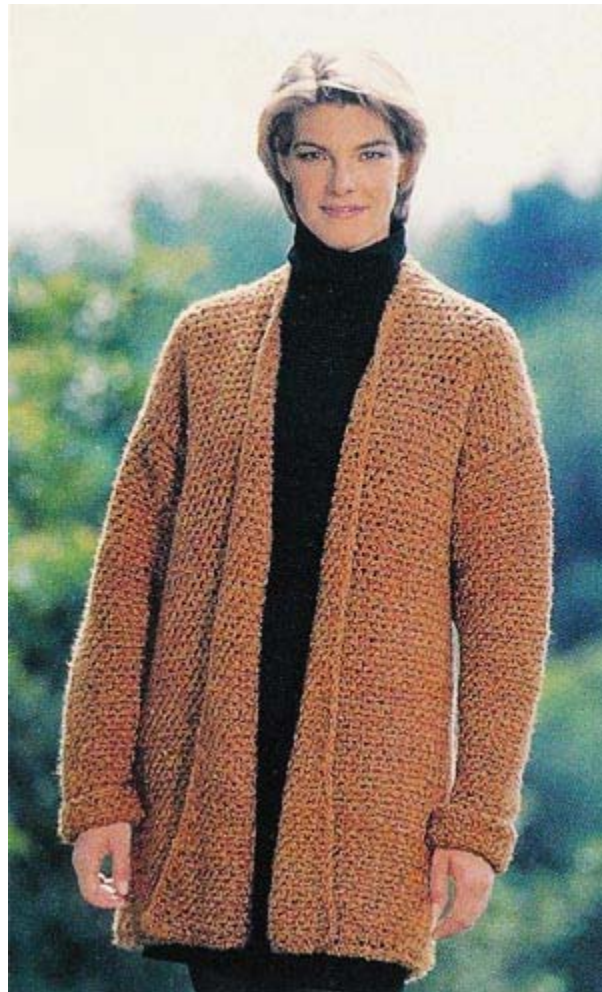




**Lion Brand® Homespun®
Streamlined Sweater Jacket**
Pattern Number: 878



Lion Brand® Homespun® Streamlined Sweater Jacket

Pattern Number: 878

SKILL LEVEL: Easy

SIZE: Small, Medium, Large, 1X, 2X, 3X

Finished bust measurements: 42 (46, 50, 54, 57, 60) in. [106 (117, 127, 137, 145, 152) cm]

Note: Pattern is written for smallest size with changes for larger sizes in parentheses. When only one number is given, it applies to all sizes. To follow pattern more easily, circle all numbers pertaining to your size before beginning.

CORRECTIONS: (applied Mar 2, 2006)

SWEATER

BACK: Ch ~~68 (74, 80, 86, 92, 98)~~ **69 (75, 81, 87, 93, 99)**.

SLEEVES: Ch ~~32~~ **33**.

MATERIALS

- 790-326 Homespun®: Ranch
8 (8,9,9,10,10) Skeins
- Lion Brand Crochet Hook - Size K-10.5

GAUGE:

13 sts and 12 rows = 4in [10 cm]. BE SURE TO CHECK YOUR GAUGE.

STITCH EXPLANATION:

PATTERN:

Row 1: 1 sc in 3rd ch from hook * ch 1, skip 1 ch, 1 sc in next ch, rep from * across. Ch 2, turn.

Row 2: * 1 sc in ch-space, ch 1, rep from * across, end 1 sc in t-ch space. Ch 2, turn.

Rep Row 2 for pat.

SWEATER

BACK: Ch Ch 69 (75, 81, 87, 93, 99).

Row 1: 1 sc in 3rd ch from hook, * ch 1, skip 1 ch, 1 sc in next ch, rep from * across. Ch 2, turn.

Row 2: * 1 sc in ch-1 space, ch 1, rep from * across, end 1 sc in t-ch space. Ch 2, turn. Row 2 for pat until piece measures 28 (30, 30, 31, 31, 32) in. [71 (76, 76, 79, 79, 81) cm.] from beg. Fasten off.

LEFT FRONT: Ch 53 (56, 59, 62, 65, 68). Work pat Rows 1 and 2, then continue to rep Row 2 for pat, dec 1 st at center front on next row, then every 4 rows 18 times more. Work until Left Front measures same as Back to shoulder. Fasten off. **Note:** Mark 10 sts from center front for neck shaping.

RIGHT FRONT: Work to correspond to Left Front, reversing shaping.

SLEEVES: Ch 33. Work pat Rows 1 and 2, then continue to rep Row 2 for pat even for 4 in. Continue in pat, inc 1 st at each end every other row 15 (16, 17, 18, 19, 20) times, then every 4th row 4 (5, 6, 7, 8, 9) times. Work even in pat until Sleeve measures 20 (21, 21, 22, 22, 23) in. [51 (53, 53, 56, 56, 58) cm] from beg or desired length. Fasten off.

FINISHING: Sew Fronts to Back at shoulders, leaving 10 sts at each center Front free.

Neck edging: With RS facing, join yarn with a sl st in first st of the 10 sts left free on Left Front. Continue in pat on these 10 sts until piece reaches center Back of neck. Fasten off. Work 10 sts left free on Right Front to correspond. Invisibly sew edges of neck edging to Left and Right Fronts respectively, then join at center Back of neck.

Mark for Sleeve placement 11 (11½, 12, 12½, 13, 13½) in. [28 (29, 30, 32, 33, 34) cm] down from shoulder seams. Sew Sleeves between markers. Sew side and Sleeve seams. Turn Sleeve cuff back for desired Sleeve length.

Shape flap: On each front on lower edge, fold center front 6 in. over to RS and pin in place to create an overlap. Join yarn with a sl st at side seam and work 1 rnd sc along entire outer edge of Jacket easing in fullness so that the overlap lays flat.

ABBREVIATIONS / REFERENCES	
Click for explanation and illustration	
beg = begin(s)(ning)	ch(s) = chain(s)
dec = decreas(e)(s)(ing)	inc = increas(e)(s)(ing)
pat = pattern	rep = repeat(s)(ing)
rnd(s) = round(s)	RS = right side
sc = single crochet	sl st = slip stitch
st(s) = stitch(es)	t-ch = turning chain

Learn to crochet instructions: <http://learnToCrochet.LionBrand.com>

Every effort has been made to have the knitting and crochet instructions accurate and complete. We cannot be responsible for variance of individual knitters and crocheters, human errors, or typographical mistakes.



**Homespun (Article #790) is a uniquely-textured bulky weight yarn that works up quickly and easily. 98% acrylic, 2% polyester; packaged in 6 oz/170g (185 yd/167m) pull skeins.*

We want your project to be a success! If you need help with this or any other Lion Brand pattern, e-mail support is available 7 days per week. Just click [here](#) to explain your problem and someone will help you!

For hundreds of free patterns, visit our website www.LionBrand.com

To order visit our website www.e-yarn.com or call: (800) 258-YARN (9276) any time!

Copyright © 1998-2005 Lion Brand Yarn Company, all rights reserved. No pattern or other material may be reproduced -- mechanically, electronically, or by any other means, including photocopying -- without written permission of Lion Brand Yarn Company. If you would like to send a copy of this page to someone, click [here](#) and we will be happy to do it for you.