



HOMESPUN® OR MOONLIGHT MOHAIR OR FANCY FUR OR INCREDIBLE Crochet Poncho in 4 Versions – Moonlight Mohair

Pattern Number: 50322



LION BRAND® HOMESPUN® OR MOONLIGHT MOHAIR OR FANCY FUR OR INCREDIBLE

Crochet Poncho in 4 Versions - Moonlight Mohair Version

Pattern Number: 50322

Skill Level: Easy

SIZE

Circumference 32" [81.5 cm] at neck; 54 1/2" [138.5 cm] at lower edge

Length 20 3/4" [52.5 cm]

MATERIALS

Version 1

- LION BRAND Moonlight Mohair
8 balls #207 Coral Reef
or color of your choice
- LION BRAND size K-10.5 [6.5 mm] crochet hook OR SIZE TO OBTAIN GAUGE

GAUGE

(Dc, ch 1) 5 times + 5 rows = 4" [10 cm] in (dc, ch 1) pattern.

4 V-sts + 6 rows = 4" [10 cm] in V-st pattern.

BE SURE TO CHECK YOUR GAUGE.

STITCH EXPLANATION

V-st (Dc, ch 1, dc) in same st or space.

PONCHO

Foundation Rnd Starting at neck edge, ch 3, sc in 3rd ch from hook, *ch 3, sc in last ch3-space; repeat from * until Foundation Rnd measures 32" [81.5 cm]; join with slip st in first ch3-space.

BODY

Rnd 1 (RS) Ch 4, work (dc, ch 1) 63 times evenly spaced around ring; join with slip st in 3rd ch of beg ch – 64 ch1-spaces.

Rnds 2-3 Slip st in first ch1-space, ch 4, (dc, ch 1) in each ch1-space around; join with slip st in 3rd ch of beg ch.

© 1998-2005 [Lion Brand Yarn Company](#), all rights reserved
34 West 15th Street, New York, New York 10011
Call TOLL-FREE 1-800-258-YARN

Rnd 4 Slip st in first ch1-space, ch 4, dc in same ch1-space, ch 1 (*inc made*), (dc, ch 1) in each of next 31 ch1-spaces, (dc, ch 1, dc, ch 1) in next ch1-space (*inc made*), (dc, ch 1) in each of next 31 ch1-spaces; join with slip st in 3rd ch of beg ch – 66 ch1-spaces.

Rnds 5-7 Repeat Rnd 2.

Rnd 8 Slip st in first ch1-space, ch 4, dc in same ch1-space, ch 1 (*inc made*), (dc, ch 1) in each of next 32 ch1-spaces, (dc, ch 1, dc, ch 1) in next ch1-space (*inc made*), (dc, ch 1) in each of next 32 ch1-spaces; join with slip st in 3rd ch of beg ch – 68 ch1-spaces.

Rnds 9-11 Repeat Rnd 2.

Rnd 12 Slip st in first ch1-space, ch 4, dc in same ch1-space, ch 1 (*inc made*), (dc, ch 1) in each of next 33 ch1-spaces, (dc, ch 1, dc, ch 1) in next ch1-space (*inc made*), (dc, ch 1) in each of next 33 ch1-spaces; join with slip st in 3rd ch of beg ch – 70 ch1-spaces.

DIVIDE FOR FRONT AND BACK

Note Work now progresses in rows.

FRONT

Row 1 (RS) Ch 3, (dc, ch 1) in each of next 34 ch1-spaces, dc in next space; turn, leaving remaining sts unworked – 34 ch1-spaces.

Row 2 Ch 3, (dc, ch 1) in each ch1-space across, dc in top of turning ch; turn.

Rows 3-14 Repeat Row 2.

Fasten off.

BACK

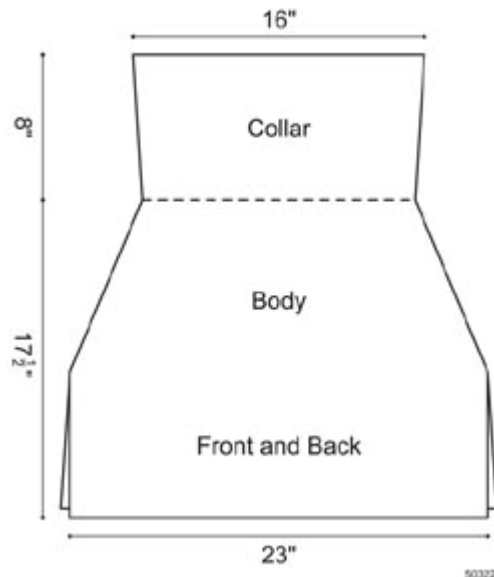
Row 1 With RS facing, join yarn in first ch1-space to the left of last st made in Row 1 of Front, ch 3, (dc, ch 1) in each of next 34 ch1-spaces, dc in next space; turn – 34 ch1-spaces.

Row 2 Ch 3, (dc, ch 1) in each ch1-space across, dc in top of turning ch; turn.

Rows 3-14 Repeat Row 2.

Fasten off.

COLLAR



Rnd 1 With RS facing, join yarn on opposite side of foundation rnd, ch 4, dc in same space, work 33 V-sts evenly spaced around foundation rnd; join with slip st in 3rd ch of beg ch – 34 V-sts.

Rnds 2-12 Slip st in ch1-space of first V-st, ch 4, dc in same ch1-space, V-st in ch1-space of each V-st around; join with slip st in 3rd ch of beg ch.

Fasten off.

FINISHING

Slit Trim

Row 1 With RS facing, join yarn at bottom corner of one slit, ch 1, sc evenly spaced up one side of slit, sc evenly spaced down other side of slit to bottom corner. Fasten off.

Repeat Slit Trim around other slit. Fasten off. Weave in ends.

ABBREVIATIONS:	
beg = begin(ning)	rnd(s) = round(s)
ch = chain	RS = right side
ch-space = space previously made	sc = single crochet
dc = double crochet	st(s) = stitch(es)
inc = increas(e)(s)(ing)	

**Moonlight Mohair (Article #510) Moonlight Mohair is a bulky weight yarn that mixes a strand of soft mohair with a slubbed, sparkly, multi-colored yarn. Bulky Weight 1¾ oz/50 g; 82 yards/75m 35% Mohair, 30% Acrylic, 25% cotton, 10% metallic polyester, it is packaged in 1 3/4 oz/82 yd balls*

Every effort has been made to have the knitting and crochet instructions accurate and complete. We cannot be responsible for variance of individual knitters and crocheters, human errors, or typographical mistakes.

© 1998-2005 Lion Brand Yarn Company, all rights reserved
 34 West 15th Street, New York, New York 10011
 Call TOLL-FREE 1-800-258-YARN

No pattern or other material may be reproduced – mechanically, electronically or by any other means, including photocopying – without written permission of Lion Brand Yarn Company