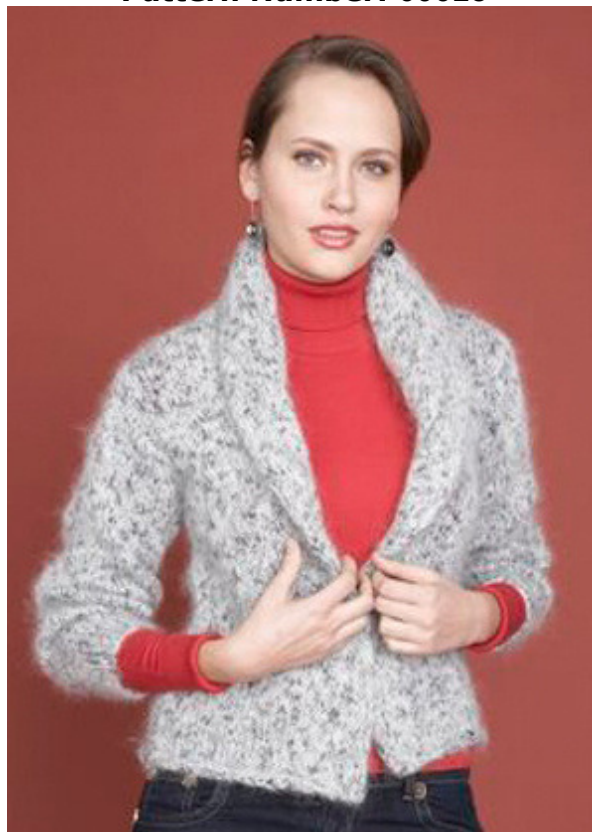




Free Knitting Pattern
Lion Brand® Moonlight Mohair
Shawl Collar Sweater
Pattern Number: 60628



Free Knitting Pattern from Lion Brand Yarn
Lion Brand® Moonlight Mohair
Shawl Collar Sweater
Pattern Number: 60628

SKILL LEVEL: Intermediate

SIZE: Small, Medium, Large, 1X, 2X, 3X

Finished Chest 36½ (40, 45½, 48, 51½, 54½) in. (92.5 (101.5, 115.5, 122, 131, 138.5) cm)

Finished Length 24 (24½, 25½, 26, 26 ¾, 27) in. (61 (62, 65, 66, 68, 68.5) cm)

Note: Pattern is written for smallest size with changes for larger sizes in parentheses. When only one number is given, it applies to all sizes. To follow pattern more easily, circle all numbers pertaining to your size before beginning.

CORRECTIONS: None

MATERIALS

- 510-208 Lion Brand Moonlight Mohair Yarn: Arctic Circle
11 (12, 14, 16, 17, 19) Balls
- Lion Brand Knitting Needles - Size 10 [6 mm]
- Lion Brand Stitch Markers
- Large-Eye Blunt Needles (Set of 6)

GAUGE:

14 sts + 20 rows = 4 in. (10 cm) in St st (k on RS, p on WS). BE SURE TO CHECK YOUR GAUGE. When you match the gauge in a pattern, your project will be the size specified in the pattern and the materials specified in the pattern will be sufficient. If it takes you less stitches and rows to make a 4 in. [10 cm] square, try using a smaller size hook or needles; if more stitches and rows, try a larger size hook or needles.

BACK

Cast on 60 (66, 74, 80, 86, 92) sts.

Work in St st (k on RS, p on WS) until piece measures 15 (15, 15½, 15½, 16, 16) in. (38 (38, 39.5, 39.5, 40.5, 40.5) cm) from beg, end with a WS row.

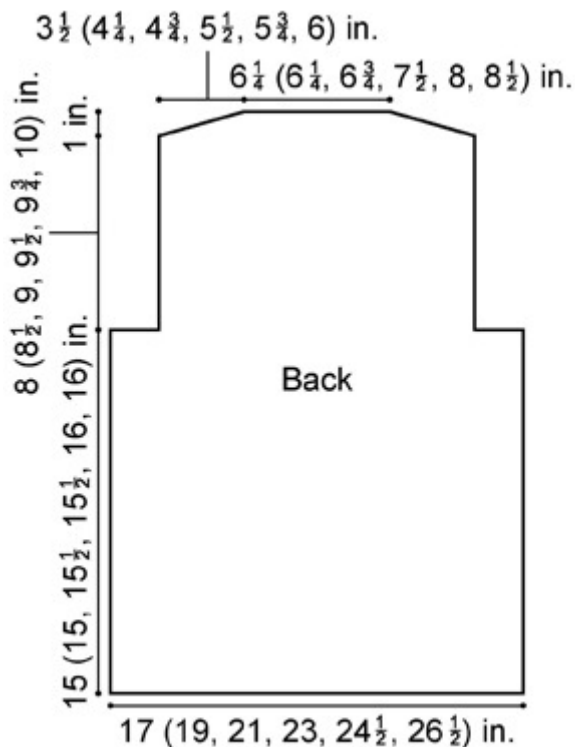
Shape Armhole

Bind off 7 (7, 8, 8, 9, 10) sts at beg of next 2 rows – 46 (52, 58, 64, 68, 72) sts.

Work even until armholes measure 8 (8½, 9, 9½, 9¾, 10) in. (20.5 (21.5, 23, 24, 25, 25.5) cm).

Shape Shoulders

Bind off 6 (8, 9, 10, 10, 11) sts at beg of next 2 rows, and 6 (7, 8, 9, 10, 10) at beg of next 2 rows. Bind off remaining 22 (22, 24, 26, 28, 30) sts for neck.



RIGHT FRONT

Cast on 41 (44, 48, 51, 54, 57) sts.

Row 1 (RS): K7 (for facing), sl 1, k to end of row.

Row 2: Purl.

Rep last 2 rows until piece measures 12 in. (30.5 cm) from beg, end with a WS row.

Shape Collar

Next Row (RS): K6, inc 1 st in next st, place marker, sl 1, place marker, inc 1 st in next st, k to end of row – 43 (46, 50, 53, 56, 59) sts.

Next Row: Purl.

Next Row: K to 1 st before first marker, inc 1 st in next st, sl marker, sl 1, sl marker, inc 1 st in next st, k to end of row – 45 (48, 52, 55, 58, 61) sts.

Rep last 2 rows 21 more times and AT THE SAME TIME, when piece measures 15 (15, 15½, 15½, 16, 16) in. (38 (38, 39.5, 39.5, 40.5, 40.5) cm) from beg, end with a RS row and shape armhole.

Shape Armhole

Bind off 7 (7, 8, 8, 9, 10) sts at beg of next WS row. Work until armhole measures same as Back to shoulders, end with a RS row and shape shoulder.

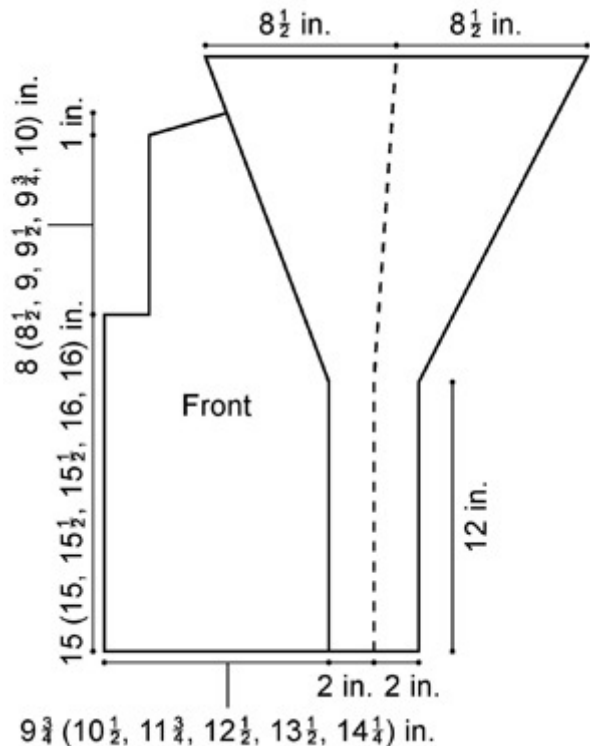
Shape Shoulder

Bind off 6 (8, 9, 10, 10, 11) sts at beg of next WS row and 6 (7, 8, 9, 10, 10) at beg of following WS row – 68 (68, 69, 70, 71, 72) sts.

Work even for 3 in. (7.5 cm). Bind off.

LEFT FRONT

Work as for Right Front, reversing all shaping.

**SLEEVE (make 2)**

Cast on 32 (32, 34, 34, 36, 38) sts. Work in St st for 7 rows, end with a WS row.

Inc Row (RS): K1, inc 1 st in next st, k to last 2 sts, inc 1 st in next st, k 1 – 34 (34, 36, 36, 38, 40) sts.

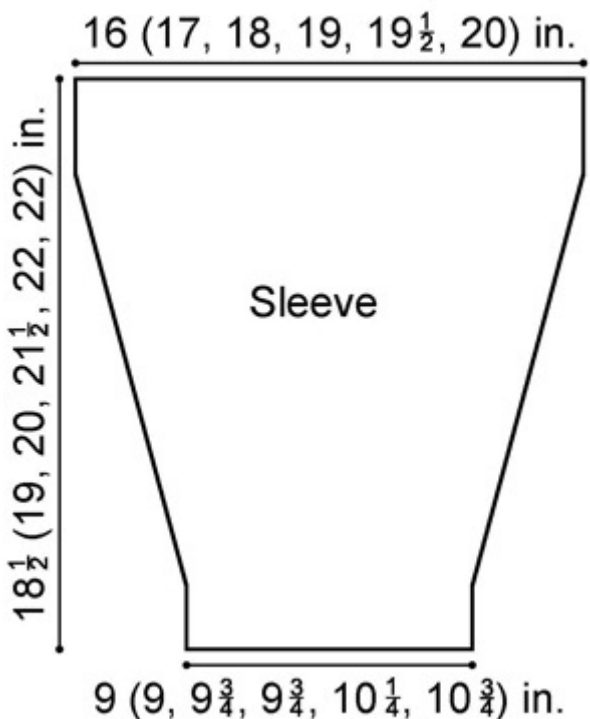
Continue in St st, inc 1 st each edge every 4th row 4 (4, 5, 6, 6, 6) more times, then on every following 6th row 7 (9, 9, 9, 9, 9) more times – 56 (60, 64, 66, 68, 70) sts.

Work even until piece measures 18½ (19, 20, 21½, 22, 22) in. (47 (48.5, 51, 54.5, 56, 56) cm) from beg, end with a WS row.

Bind off.

Finishing

Sew shoulder seams. Sew short ends of Collar together. Fold collar in half along sl st and sew together on the inside. Sew in Sleeves. Sew side and Sleeve seams. Weave in ends.



Click for explanation and illustration	
<u>beg = begin(s)(ning)</u>	<u>inc = increas(e)(s)(ing)</u>
<u>k = knit</u>	<u>p = purl</u>
<u>rep = repeat(s)(ing)</u>	<u>RS = right side</u>
<u>sl = slip</u>	<u>St st = Stockinette stitch</u>
<u>st(s) = stitch(es)</u>	<u>WS = wrong side</u>

Learn to knit instructions: <http://learnToKnit.LionBrand.com>

Every effort has been made to have the knitting and crochet instructions accurate and complete. We cannot be responsible for variance of individual knitters and crocheters, human errors, or typographical mistakes.

**Moonlight Mohair (Article #510) Moonlight Mohair is a bulky weight yarn that mixes a strand of soft mohair with a slubbed, sparkly, multi-colored yarn. Bulky Weight 1¾ oz/50 g; 82 yards/75m 35% Mohair, 30% Acrylic, 25% cotton, 10% metallic polyester, it is packaged in 1 3/4 oz/82 yd balls*



We want your project to be a success! If you need help with this or any other Lion Brand pattern, e-mail support is available 7 days per week. Just click [here](#) to explain your problem and someone will help you!

For hundreds of free patterns, visit our website www.LionBrand.com

To order visit our website www.e-yarn.com or call: (800) 258-YARN (9276) any time!

Copyright ©1998-2005 Lion Brand Yarn Company, all rights reserved. No pattern or other material may be reproduced -- mechanically, electronically, or by any other means, including photocopying -- without written permission of Lion Brand Yarn Company. If you would like to send a copy of this page to someone, click [here](#) and we will be happy to do it for you.