



LION BRAND® JIFFY®
Crochet Alphabet Afghan



INTERMEDIATE**SIZE:** 36" x 48" without border**MATERIALS**

- LION BRAND Jiffy
- 7 balls #109 Royal (MC)
- 4 balls #100 White (CC)
- 1 ball each:

- #146 Fuchsia (A)
- #170 Peacock (B)
- #158 Lemon (C)
- #173 Grass Green (D)
- #147 Purple (E)

or colors of your choice

- Size J-10 (6 mm) crochet hook OR SIZE TO OBTAIN GAUGE
- Large-eyed, blunt needle

GAUGE

12 sc + 12 rows = 4" (10 cm). BE SURE TO CHECK YOUR GAUGE.

NOTE

Changing Colors: Colors in crochet are changed on the last loop before actually beginning to work with the new color. For example, to make a single crochet stitch, yarn over and draw up a loop (2 loops on hook). Tie on the new color and pull that color through both loops.

BLANKET CENTER

With MC, ch 73.

Row 1 Sc in 2nd ch from hook and each ch across – 72 sts.

Row 2 Ch 1, turn. Sc in each sc across.

Repeat Row 2 until center measures 36" from beg. Fasten off.

ALPHABET PANELS

Top and Bottom Panels

With CC, ch 73.

Row 1 Sc into 2nd ch from hook and each ch across – 72 sts.

Row 2 With MC, ch 1, turn. Sc in each sc across.

Continue, following chart, for a total of 18 rows. Fasten off.

Side Panels

With CC, ch 109.

Row 1 Sc into 2nd ch from hook and each ch across – 108 sts.

© 2002 **Lion Brand Yarn Company**, all rights reserved.
 34 West 15th Street, New York, New York 10011
 Call TOLL-FREE 1-800-258-YARN

No pattern or other material may be reproduced—mechanically, electronically, or by any other means, including photocopying—without written permission of Lion Brand Yarn Company.

Row 2 With MC, ch 1, turn. Sc in each sc across. Continue, following chart, for a total of 18 rows. Fasten off.

CORNERS (make 4)

With CC, ch 19.

Row 1 Sc in 2nd ch from hook and each ch across – 18 sts.

Row 2 Ch 1, turn. Following chart, sc in each sc across. Continue, following chart for a total of 18 rows. Fasten off.

FINISHING

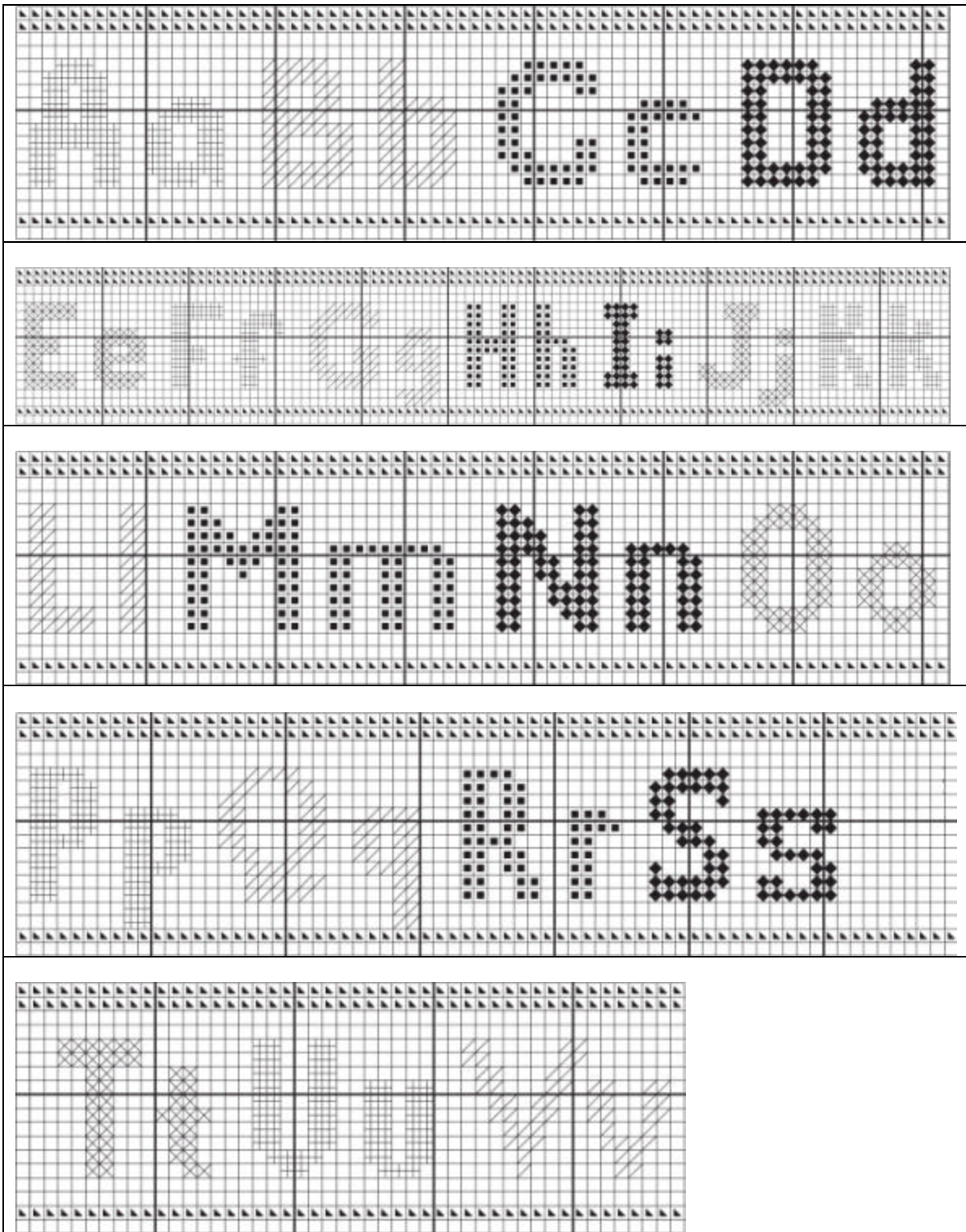
Sew the alphabet panels to center as pictured. Sew the corners as pictured. Border With RS facing, join CC with slip st in any corner. Work 99 sc evenly spaced along the top and bottom; 132 sc evenly spaced along the sides; and 3 sc in each corner. Work in rnds of sc, working 3 sc in each corner each rnd, working 2 rnds of each color in the following sequence: B, A, C, and E. Fasten off.

ABBREVIATIONS	
beg = begin(ning)	sc = single crochet
CC = contrasting color	rnd(s) = round(s)
ch = chain	RS = right side
MC = main color	st(s) = stitch(es)

Jiffy (Article #450) Heather Blue and multi-colors come in 21¼/2 oz/115 yd balls; all other solid colors come in 3 oz/135 yd balls.

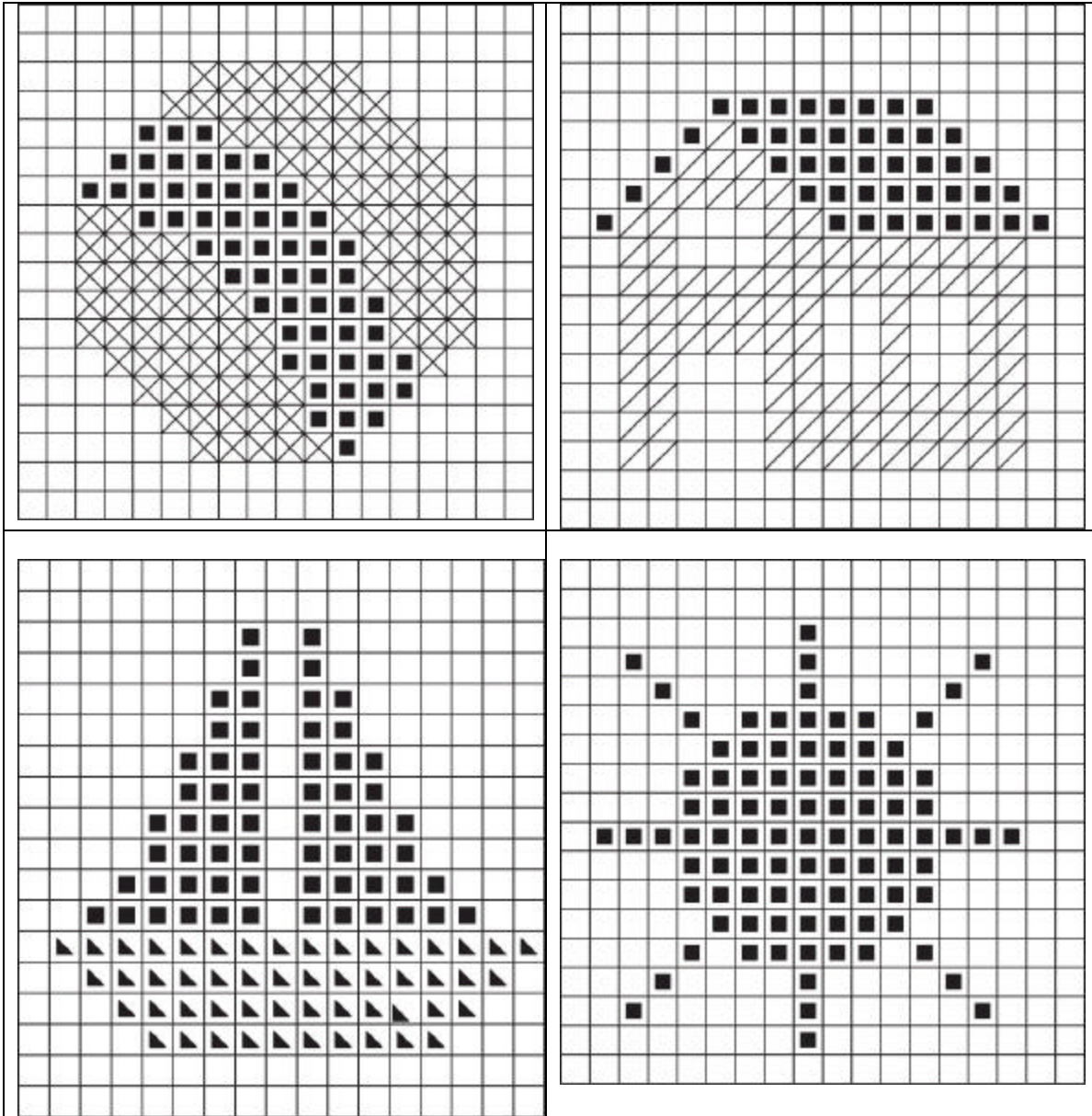
© 2002 **Lion Brand Yarn Company**, all rights reserved.
 34 West 15th Street, New York, New York 10011
 Call TOLL-FREE 1-800-258-YARN

No pattern or other material may be reproduced—mechanically, electronically, or by any other means, including photocopying—without written permission of Lion Brand Yarn Company.



© 2002 **Lion Brand Yarn Company**, all rights reserved.
34 West 15th Street, New York, New York 10011
Call TOLL-FREE 1-800-258-YARN

No pattern or other material may be reproduced—mechanically, electronically, or by any other means, including photocopying—without written permission of Lion Brand Yarn Company.



Every effort has been made to have the knitting and crochet instructions accurate and complete. We cannot be responsible for variance of individual knitters and crocheters, human errors, or typographical mistakes

© 2002 **Lion Brand Yarn Company**, all rights reserved.
34 West 15th Street, New York, New York 10011
Call TOLL-FREE 1-800-258-YARN

No pattern or other material may be reproduced—mechanically, electronically, or by any other means, including photocopying—without written permission of Lion Brand Yarn Company.