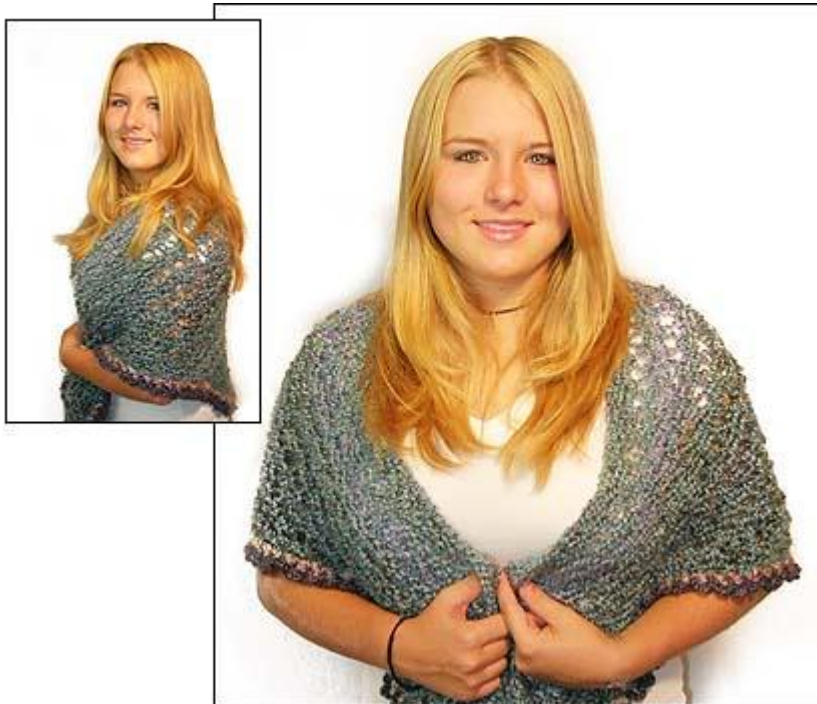




**LION BRAND<sup>®</sup> HOMESPUN<sup>®</sup>**  
**Crochet “Tea and Sympathy” Shawl**

Pattern 50538-C

[Read the 'Tea and Sympathy' Shawl Story](#)



Colorway 1, knitted version shown

# LION BRAND® HOMESPUN® Crochet “Tea and Sympathy” Shawl

Pattern 50538-C

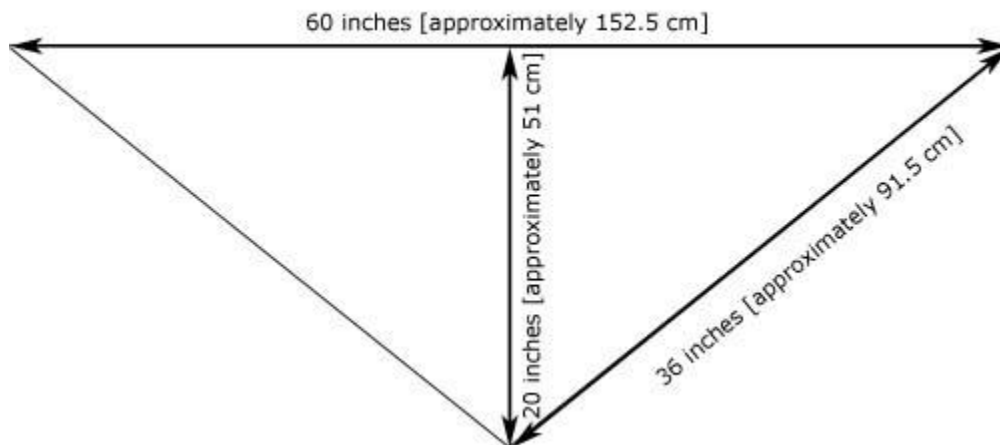
Skill Level: Easy

## SIZE

One size

**Length** 20” [51 cm] back waist length

Note: All measurements are approximate; this garment is very stretchy



## MATERIALS

### Colorway 1

- LION BRAND Homespun  
#341 Windsor 2 balls (A) and  
#362 Quartz 1 ball (B)  
#336 Barrington 1 ball (C)

### Colorway 2

- LION BRAND Homespun  
#336 Barrington 2 balls (A)  
#341 Windsor 1 ball (B)  
#315 Tudor 1 ball (C)
- LION BRAND size N-13 (9 mm) crochet hook OR SIZE TO OBTAIN GAUGE
- LION BRAND Size K -10.5 (6.5 mm) crochet hook
- LION BRAND large-eyed, blunt needle

© 1998-2005 Lion Brand Yarn Company, all rights reserved  
34 West 15th Street, New York, New York 10011  
Call TOLL-FREE 1-800-258-YARN

**GAUGE**

7 sts + 6 rows = 4" [10 cm] in lacy pattern.  
BE SURE TO CHECK YOUR GAUGE.

**STITCH EXPLANATION****LACY PATTERN**

**Row 1** Sc in each st, ch 2, turn.

**Row 2** Repeat row 1. Ch 5, turn.

**Row 3** Tr in each st, ch 2, turn.

Repeat Rows 1 – 3 for lacy pattern.

**SHAWL**

Using A, ch 9. Sc into the 2nd ch from hook and each ch across – 7 scs. Ch 2, turn. Inc 1 st in first and last st, work row 2. Work row 3 of lacy pattern. Continuing to work rows 1 – 3 of lacy pattern and inc in first and last sts of rows 1 and 2, work until A yarn is finished. Fasten off.

**EDGING**

With B and smaller crochet hook, sc evenly along diagonal side edges of shawl. Fasten off. Join C in first sc, \*ch 7, sc in next st; repeat from \* along side edges of shawl. Fasten off. Weave in ends.

**ABBREVIATIONS:**

beg = begin(ning)	sc = single crochet
ch = chain	st(s) = stitch(es)
inc = increase	tr = treble crochet

*\*Homespun (Article #790) is a uniquely-textured bulky weight yarn that works up quickly and easily. 98% acrylic, 2% polyester; packaged in 6 oz/170g (185 yd/167m) pull skeins.*

Every effort has been made to have the knitting and crochet instructions accurate and complete. We cannot be responsible for variance of individual knitters and crocheters, human errors, or typographical mistakes.

© 1998-2005 Lion Brand Yarn Company, all rights reserved  
34 West 15th Street, New York, New York 10011  
Call TOLL-FREE 1-800-258-YARN

No pattern or other material may be reproduced – mechanically, electronically or by any other means, including photocopying – without written permission of Lion Brand Yarn Company