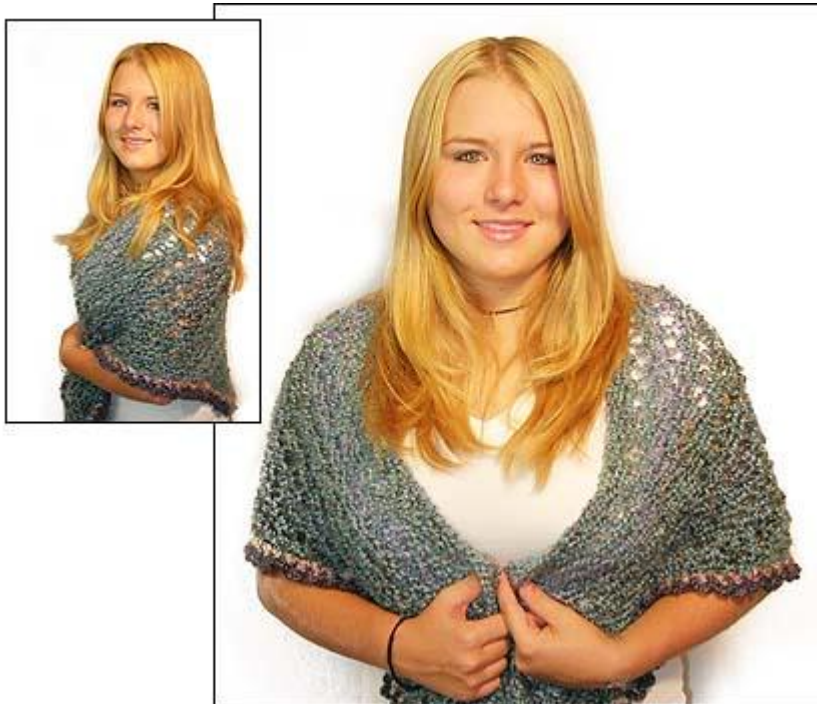




LION BRAND[®] HOMESPUN[®]
Knitted “Tea and Sympathy” Shawl

Pattern 50538-K

[Read the 'Tea and Sympathy' Shawl Story](#)



Colorway 1, knitted version shown

LION BRAND[®] HOMESPUN[®]

Knit “Tea and Sympathy” Shawl

Pattern 50538-K

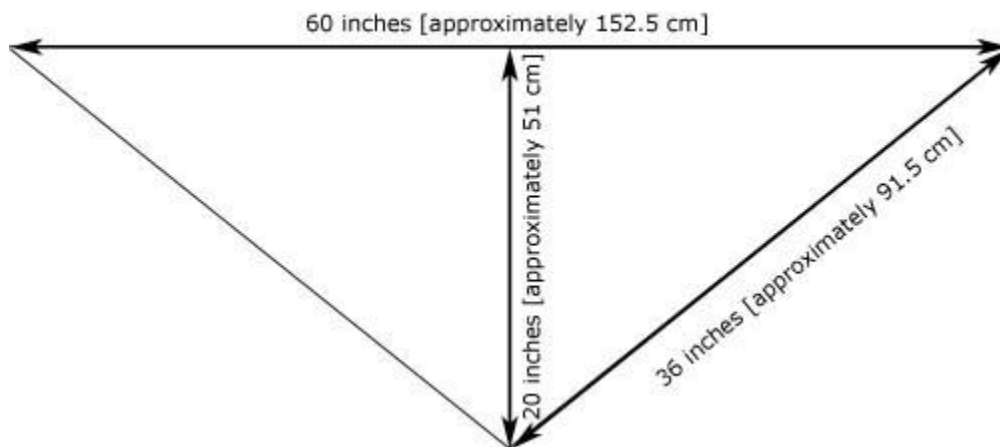
Skill Level: Easy

SIZE

One size

Length 20” [51 cm] back waist length

Note: All measurements are approximate; this garment is very stretchy



MATERIALS

Colorway 1

- LION BRAND Homespun
#341 Windsor 2 balls (A) and
#362 Quartz 1 ball (B)
#336 Barrington 1 ball (C)

Colorway 2

- LION BRAND Homespun
#336 Barrington 2 balls (A)
#341 Windsor 1 ball (B)
#315 Tudor 1 ball (C)

- Size 13 [9 mm] knitting needle OR SIZE TO OBTAIN GAUGE
- LION BRAND Size K -10.5 (6.5 mm) crochet hook
- LION BRAND large-eyed, blunt needle

© 1998-2005 Lion Brand Yarn Company, all rights reserved
34 West 15th Street, New York, New York 10011
Call TOLL-FREE 1-800-258-YARN

GAUGE

8 sts + 12 rows = 4" [10 cm] in lacy pattern.

BE SURE TO CHECK YOUR GAUGE

STITCH EXPLANATIONS

M1 (make 1) An increase worked by lifting horizontal thread lying between needles and placing it onto left needle. Work this new stitch through the back loop.

LACY PATTERN

Rows 1 and 2 Knit across

Row 3 K each st wrapping yarn around needle twice.

Row 4 Dropping one loop of wrapped yarn from previous row to make a long dropped stitch, k each st.

Repeat rows 1 – 4 for lacy pattern.

SHAWL

With A, cast on 10 sts. K one row. **Row 1 of lacy pattern** K1, m1, k to last stitch, m1, k1. Continuing to work rows 1 – 4 of lacy pattern and inc in first and last sts of rows 1 and 2, work until A yarn is finished. Fasten off.

EDGING

With B and crochet hook, sc evenly along diagonal side edges of shawl. Fasten off. Join C in first sc, *ch 7, sc in next st; repeat from * along side edges of shawl. Fasten off. Weave in ends.

ABBREVIATIONS:

beg = begin(ning)	k = knit
ch = chain	sc = single crochet
inc = increase	st(s) = stitch(es)

**Homespun (Article #790) is a uniquely-textured bulky weight yarn that works up quickly and easily. 98% acrylic, 2% polyester; packaged in 6 oz/170g (185 yd/167m) pull skeins.*

Every effort has been made to have the knitting and crochet instructions accurate and complete. We cannot be responsible for variance of individual knitters and crocheters, human errors, or typographical mistakes.

© 1998-2005 Lion Brand Yarn Company, all rights reserved
34 West 15th Street, New York, New York 10011
Call TOLL-FREE 1-800-258-YARN

No pattern or other material may be reproduced – mechanically, electronically or by any other means, including photocopying – without written permission of Lion Brand Yarn Company