



**Free Knitting Pattern
Lion Brand Wool-Ease®
Ribbed Cable Purse**

Pattern Number: 50607B



Free Knitting Pattern from Lion Brand Yarn

Lion Brand® Wool-Ease® Ribbed Cable Purse

Pattern Number: 50607B

SKILL LEVEL: [Intermediate](#)

SIZE: Small, Medium

Finished Width 8 (11) in. (20.5 (28) cm)

Finished Height 7 (8 1/2) in. (18 (21.5) cm)

Note: Pattern is written for smallest size with changes for larger sizes in parentheses. When only one number is given, it applies to all sizes. To follow pattern more easily, circle all numbers pertaining to your size before beginning.

CORRECTIONS: None as of Nov 3, 2010. To check for later updates, click [here](#).

MATERIALS

- 620-152 [Lion Brand Wool-Ease Yarn: Oxford Grey](#)
2 2 Balls
- [Lion Brand Knitting Needles - Size 8 \[5 mm\]](#)
- [Lion Brand Split Ring Stitch Markers](#)
- [Lion Brand Cable Needles \(Set of 2\)](#)
- [Large-Eye Blunt Needles \(Set of 6\)](#)

GAUGE:

18 sts + 21 rows = 4 in. (10 cm) in Seed st. BE SURE TO CHECK YOUR GAUGE. When you match the gauge in a pattern, your project will be the size specified in the pattern and the materials specified in the pattern will be sufficient. If it takes you less stitches and rows to make a 4 in. [10 cm] square, try using a smaller size hook or needles; if more stitches and rows, try a larger size hook or needles.

STITCH EXPLANATION:

4/4 RC (4 over 4 right cross) Slip 4 sts to cable needle and hold in back, k4, then k4 from cable needle.

M1 (make 1) An increase worked by lifting the horizontal thread lying between needles and placing it onto left needle. Knit this new stitch through the back loop - 1 st increased.

sp2p (slip-p2tog-pass slipped st over)

A double decrease worked as follows:

1. Insert right needle as if to knit, and slip the next st from the left needle to the right needle.
2. Purl the next 2 sts together.
3. With tip of left needle, lift the slipped st (the 2nd st on right needle) up and over the p2tog (first st on right needle) and off the needle - 2 sts decreased.

s2p2p (slip 2-p2tog-pass 2 slipped sts over) A triple decrease worked as follows:

1. Insert right needle as if to k2tog into next 2 sts, and slip the 2 sts together from the left needle to the right needle.
2. Purl the next 2 sts together.
3. With tip of left needle, lift the 2 slipped sts (the 2nd and 3rd sts on right needle) up and over the p2tog (first st on right needle) and off the needle - 3 sts decreased.

PATTERN STITCHES

Cable I (over 12 sts)

Rows 1 and 3 (WS): K2, p8, k2.

Row 2 (RS): P2, k8, p2.

Row 4: P2, 4/4 RC, p2.

Rows 5-10: Rep Rows 1 and 2.

Rep Rows 1-10 for Cable I.

Cable II (over 11 sts)

Row 1 (WS): K2, (p1 tbl, k1) 3 times, p1 tbl, k2.

Row 2 (RS): P2; slip next 3 sts to cable needle and hold in front, (k1 tbl, p1) twice, (k1 tbl, p1, k1 tbl) from cable needle; p2.

Row 3: Rep Row 1.

Row 4: P2, (k1 tbl, p1) 3 times, k1 tbl, p2.

Rows 5-10 Rep Rows 3 and 4.

Rep Rows 1-10 for Cable II.

Seed Stitch (over an odd number of sts)

Row 1: *K1, p1; rep from * to last st, k1.

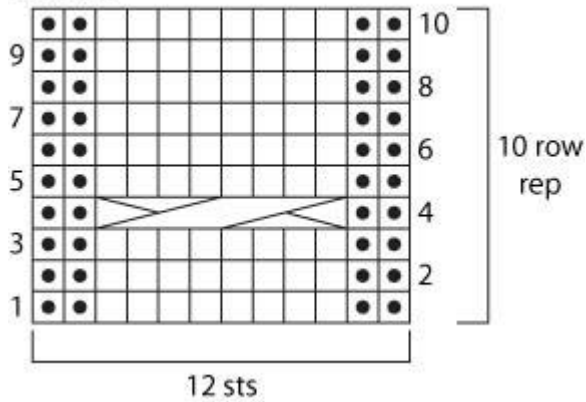
Row 2: K the purl sts and p the knit sts.

Rep Row 2 for Seed st.

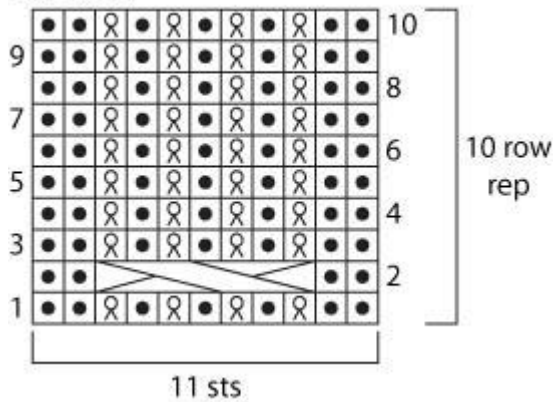
NOTES:

1. Photo is of Small Purse; Medium Purse will differ slightly in appearance.
2. Stitch markers are used to mark placement of cable patterns. Slip markers as you come to them.
3. Cable patterns can be worked from written instructions or by following charts.

Cable I



Cable II



- k on RS, p on WS
- p on RS, k on WS
- ⊗ k tbl on RS, p tbl on WS
- ⌘ 4/4 RC: Sl 4 sts onto cable needle and hold in back, k4, k4 from cable needle
- ⌘ Sl next 3 sts to cable needle and hold in front, (k1 tbl, p1) twice, (k1 tbl, p1, k1 tbl) from cable needle

PURSE

Cast on 37 (49) sts.

Work in Seed st for 3 (2) rows.

Increase Row (RS): (Work 2 sts in Seed st as established, M1) 2 (3) times, work in Seed st as established to last 4 (6) sts, (M1, work 2 sts in Seed st as established) 2 (3) times - 41 (55) sts at the end of this row.

Set-Up Row (WS): Work Row 1 of Cable I over next 12 sts, place marker (pm), (work 3 sts in Seed st as established, pm, work Row 1 of Cable II over next 11 sts, pm) 1 (2) times, work 3 sts in Seed st as established, pm, work Row 1 of Cable I over next 12 sts.

Continue in Seed and Cable patterns as established until 84 (104) rows have been completed, end with Row 4 of patterns.

Size Small ONLY

Next Row (WS): k2, sp2p, p5, k2, work 3 sts in Seed st as established, work Row 1 of Cable II over next 11 sts, work 3 sts in Seed st as established, k2, p5, sp2p, k2 - 37 sts at the end of this row.

Size Medium ONLY

Next Row (WS): K2, s2p2p, p4, k2, (work 3 sts in Seed st as established, work Row 1 of Cable II over next 11 sts) 2 times, work 3 sts in Seed st as established k2, p4, s2p2p, k2 - 49 sts at the end of this row.

Both Sizes

Work in Seed st for 3 (2) rows.
Bind off.

FINISHING

Fold lower 7 (8 1/4) in. (18 (21) cm) up to form Purse. Upper 3 (4) in. (7.5 (10) cm) will be Purse flap. Seam sides beg at top and sewing until 2 (2 1/2) in. (5 (6.5) cm) from bottom. Flatten remainder of side seam and sew across, forming an upside-down "T" to round the base.

HANDLE

Cast on 5 (7) sts.
Work in Seed St until piece measures 18 (30) in. (45.5 (76) cm) from beg.
Bind off. Sew ends of Handle to inside of Purse at side seams.
Weave in ends.

ABBREVIATIONS / REFERENCES	
Click for explanation and illustration	
<u>beg = begin(s)(ning)</u>	<u>k = knit</u>
<u>p = purl</u>	<u>Pm = place marker</u>
<u>rep = repeat(s)(ing)</u>	<u>RS = right side</u>
<u>st(s) = stitch(es)</u>	<u>tbl = through the back loop</u>
<u>WS = wrong side</u>	

Learn to knit instructions: <http://learnToKnit.LionBrand.com>

Every effort has been made to have the knitting and crochet instructions accurate and complete. We cannot be responsible for variance of individual knitters and crocheters, human errors, or typographical mistakes.

We want your project to be a success! If you need help with this or any other Lion Brand pattern, e-mail support is available 7 days per week. Just click [here](#) to explain your problem and someone will help you!

For thousands of free patterns, visit our website www.LionBrand.com

To order visit our website www.lionbrand.com or call: (800) 258-YARN (9276) any time!

Copyright ©1998-2009 Lion Brand Yarn Company, all rights reserved. No pattern or other material may be reproduced -- mechanically, electronically, or by any other means, including photocopying -- without written permission of Lion Brand Yarn Company.