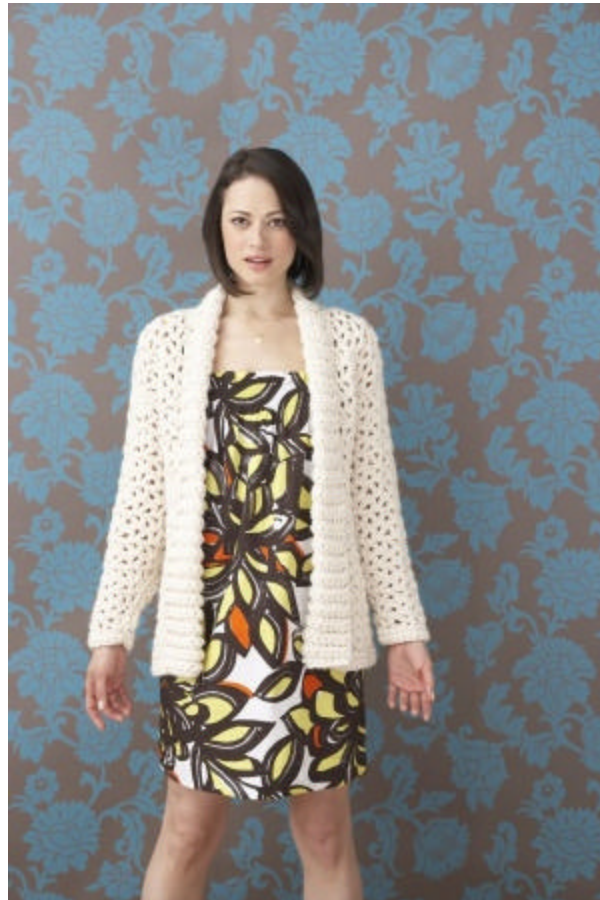




Free Crochet Pattern
Lion Brand® Wool-Ease®Thick & Quick®
Whiter Shade Of Pale Car Coat

Pattern Number: 70004A



Free Crochet Pattern from Lion Brand Yarn Lion Brand® Wool-Ease®Thick & Quick® Whiter Shade Of Pale Car Coat

Pattern Number: 70004A

SKILL LEVEL: Easy

SIZE:

S (M/L, 1X, 2X)

Finished Chest 37 (43, 48, 53) in. (94 (109, 122, 134.5) cm)

Finished Length 26 1/2 (27 1/2, 28 1/2, 29 1/2) in. (67.5 (70, 72.5, 75) cm)

CORRECTIONS: None

MATERIALS

- 640-099 Lion Brand Wool-Ease® Thick & Quick: Fisherman
8 9, 10, 11 Balls
- Lion Brand Crochet Hook - Size N-13
- Large-Eye Blunt Needles (Set of 6)

GAUGE:

7 sts (2 1/4 V-sts) = 3 in. (7.5 cm); 17 rows = 18 in. (45.5 cm) in V-st pattern. BE SURE TO CHECK YOUR GAUGE. When you match the gauge in a pattern, your project will be the size specified in the pattern and the materials specified in the pattern will be sufficient. If it takes you less stitches and rows to make a 4 in. [10 cm] square, try using a smaller size hook or needles; if more stitches and rows, try a larger size hook or needles.

STITCH EXPLANATION:

PATTERN STITCH

V-st Pattern (multiple of 3 sts)

Row 1: (Dc, ch 1, dc) in 6th ch from hook (V-st made), sk 2 ch, *(dc, ch 1, dc) in next ch (V-st made), sk 2 ch; rep from * to last ch, dc in last ch.

Row 2: Ch 3 (counts as first dc), turn, V-st in ch-1 sp of each V-st across, dc in 3rd ch of beg-ch.

Rep Row 2 for V-st pattern.

BACK

Ch 48 (54, 60, 66).

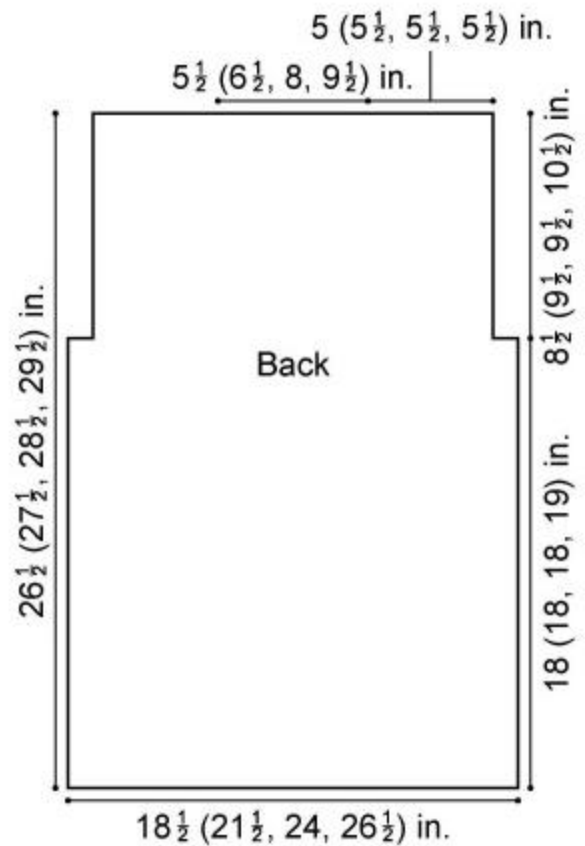
Row 1: Work Row 1 of V-st pattern - 14 (16, 18, 20) V-sts with 1 dc at each end.

Continue in V-st pattern for a total of 17 (17, 18, 18) rows. Fasten off.

Shape Armholes

Row 1: Sk first dc, sk (dc, ch-1) of first V-st, join yarn in next dc of first V-st, ch 3 (counts as first dc), V-st in ch-1 sp of each V-st across to last V-st, dc in first dc of last V-st; leave remaining sts unworked - 12 (14, 16, 18) V-sts.

Continue in V-st pattern for a total of 8 (9, 9, 10) rows from beg of armhole shaping. Fasten off.

**LEFT FRONT**

Ch 21 (24, 27, 30).

Row 1 (RS): Work Row 1 of V-st pattern - 5 (6, 7, 8) V-sts with 1 dc at each end.

Continue in V-st pattern until piece measures same length as Back to armhole, end with a WS row. Fasten off.

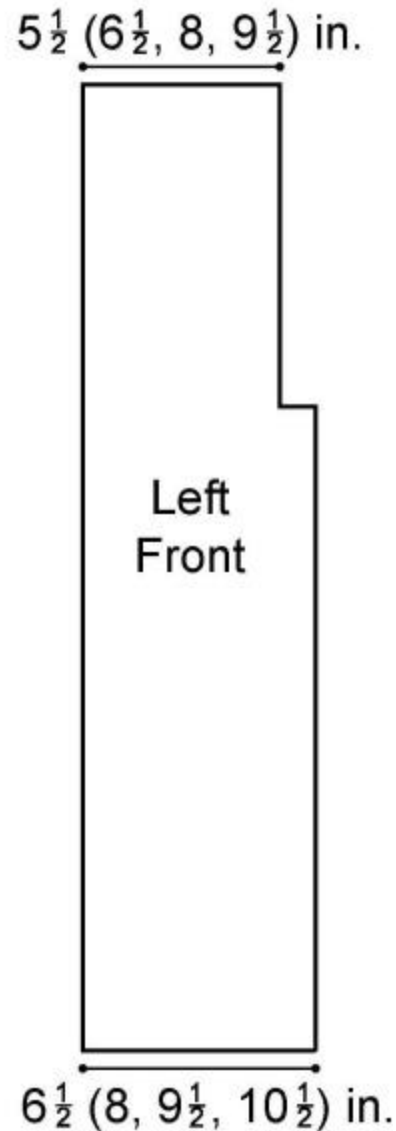
Shape Armhole

Row 1 (RS): Sk first dc, sk (dc, ch-1) of first V-st, join yarn in next dc of first V-st, ch 3 (counts as first dc), V-st in ch-1 sp of each V-st across, dc in top of beg ch-3 - 4 (5, 6, 7) V-sts.

Continue in V-st pattern for a total of 8 (9, 9, 10) rows from beg of armhole shaping. Fasten off.

RIGHT FRONT

Work as for Left Front, reversing shaping (work armhole shaping at end of row).

**SLEEVE (make 2)**

Ch 21 (21, 21, 24).

Row 1: Work Row 1 of V-st pattern - 5 (5, 5, 6) V-sts with 1 dc at each end.

Row 2: Ch 3 (counts as first dc here and throughout), turn, dc in first dc (inc made), V-st in ch-1 sp of each V-st across, 2 dc in top of beg ch-3 (inc made) - 5 (5, 5, 6) V-sts with 2 dc at each end.

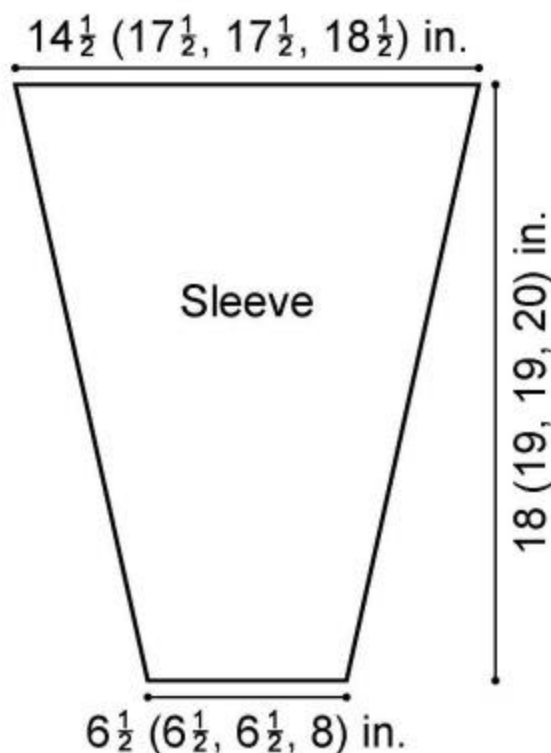
Row 3: Ch 3, turn, dc in first dc (inc made), dc in next dc, V-st in ch-1 sp of each V-st across, dc in next dc, 2 dc in top of beg ch-3 (inc made) - 5 (5, 5, 6) V-sts with 3 dc at each end.

Row 4: Ch 3, turn, V-st in next dc, V-st in ch-1 sp of each V-st across, sk 1 dc, V-st in next dc, dc in top of beg ch-3 - 7 (7, 7, 8) V-sts with 1 dc at each end.

Row 5: Ch 3, turn, V-st in ch-1 sp of each V-st across, dc in top of beg ch-3.

Rows 6-13 (17, 17, 17): Rep last 4 rows 2 (3, 3, 3) times - 11 (13, 13, 14) V-sts with 1 dc at each end.

Continue in V-st pattern for a total of 17 (18, 18, 19) rows or until piece measures 18 (19, 19, 20) in. (45.5 (48.5, 48.5, 51) cm) from beg. Fasten off.



FINISHING

Sew shoulder seams. Sew in Sleeves. Sew side and Sleeve seams.

Sleeve Edging

From RS, join yarn at wrist edge of Sleeve.

Work 2 rnds sc evenly spaced around lower edge of Sleeve.

Coat Edging

From RS, join yarn at lower Left Front edge.

Row 1: Sc evenly spaced along lower edge of Coat.

Row 2: Ch 1, turn, sc in each sc across. Fasten off.

Front Bands/Collar

Ch 11.

Row 1: Sc in 2nd ch from hook and in each ch across - 10 sc.

Row 2: Ch 1, turn, working in back loops only, sc in each sc across.

Rep Row 2 until piece measures about 57 (59, 61, 63) in. (145 (150, 155, 160) cm) and fits along Left Front edge, around Back neck, and along Right Front edge of Coat.

Fasten off, sew in place.

Belt (optional)

Ch 4.

Row 1: Sc in 2nd ch from hook and in each ch across - 3 sc.

Row 2: Ch 1, turn, working in back loops only, sc in each sc across.

Rep Row 2 until Belt measures 60 in. (152.5 cm) or desired length. Fasten off.

Weave in ends.

ABBREVIATIONS / REFERENCES

[Click for explanation and illustration](#)

<u>beg = begin(s)(ning)</u>	<u>ch(s) = chain(s)</u>
<u>ch-space = space previously made</u>	<u>dc = double crochet</u>
<u>inc = increas(e)(s)(ing)</u>	<u>rep = repeat(s)(ing)</u>
<u>RS = right side</u>	<u>sc = single crochet</u>
<u>sk = skip</u>	<u>st(s) = stitch(es)</u>

Learn to crochet instructions: <http://learnToCrochet.LionBrand.com>

Every effort has been made to have the knitting and crochet instructions accurate and complete. We cannot be responsible for variance of individual knitters and crocheters, human errors, or typographical mistakes.



**Wool-Ease® Thick & Quick® (Article #640) is the super bulky member of the Wool-Ease family. It has the feel, warmth and softness of wool with the easy care of acrylic. It is packaged in 6 oz/170g, 106 yd/97m skeins. Solids, Heathers, Twists: 80% acrylic, 20% wool; Wheat: 86% acrylic, 10% wool, 4% rayon*

We want your project to be a success! If you need help with this or any other Lion Brand pattern, e-mail support is available 7 days per week. Just click [here](#) to explain your problem and someone will help you!

For hundreds of free patterns, visit our website www.LionBrand.com

To order visit our website www.e-yarn.com or call: (800) 258-YARN (9276) any time!

Copyright ©1998-2005 Lion Brand Yarn Company, all rights reserved. No pattern or other material may be reproduced -- mechanically, electronically, or by any other means, including photocopying -- without written permission of Lion Brand Yarn Company. If you would like to send a copy of this page to someone, click [here](#) and we will be happy to do it for you.