



**JIFFY® KNIT**  
**"DANCING STAR"**  
**BABY BUNTING**



# LION BRAND JIFFY® KNIT “DANCING STAR” BABY BUNTING

Item #638

## SIZE:

Directions are for infant to 3 months.

## MATERIALS:

- LION BRAND Jiffy (Art. No. 450):  
4 balls #157 Pastel Yellow or color  
of your choice. (**Note:** Jiffy multi-colors  
and Heather Blue come in 2.5 oz. balls,  
all other colors in 3 oz. balls)
- One pair knitting needles Size 10 U.S.  
(4 U.K.) (6.00 mm) OR SIZE NEEDED  
TO OBTAIN GAUGE.
- Crochet hook size J-10 U.S. (4 U.K.) (6.00 mm)
- Velcro tape for closing
- Stitch holders

## GAUGE:

14 sts and 18 rows = 4" in St st. TO INSURE PROPER  
SIZE, BE SURE TO CHECK YOUR GAUGE.

## BACK:

(**Note:** Foll outer edge of chart for shaping, ignoring lines  
for Left Front and Right Front openings. **Use a separate  
strand of yarn when casting on at beg of rows.**)

**Left Leg:** Cast on 4 sts. **Row 1 (RS):** K 4 sts. **Row 2  
(WS):** P 4 sts, cast on 3 sts -- 7 sts. **Row 3 (RS):** Cast  
on 2 sts, k 7 sts -- 9 sts. **Row 4 (WS):** P 9 sts, cast on  
2 sts -- 11 sts. **Row 5 (RS):** Cast on 2 sts, k 9 sts, k2tog  
-- 12 sts. **Row 6 (WS):** P 12 sts, cast on 2 sts -- 14 sts.  
**Row 7 (RS):** Inc 1 st in first st, k 13 sts -- 15 sts. **Row 8  
(WS):** P 12, inc 1 st in last st -- 15 sts. **Row 9  
(RS):** Inc 1 st in first st, k 14 sts -- 16 sts. **Row 10 (WS):**  
P 15, inc 1 st in last st -- 17 sts. **Row 11 (RS):** Inc 1 st in  
first st, k 14 sts, k2tog -- 17 sts. **Row 12 (WS):** P 16, inc  
1 st in last st -- 18 sts. **Row 13 (RS):** Inc 1 st in first st,  
k 17 sts -- 19 sts. **Row 14 (WS):** P2tog, p 16, inc 1 st in  
last st -- 19 sts. **Row 15 (RS):** Inc 1 st in first st, k 18 sts  
-- 20 sts. **Row 16 (WS):** P2tog, p 17, inc 1 st in last st --  
20 sts. **Row 17 (RS):** Inc 1 st in first st, k 19 sts -- 21 sts.  
**Row 18 (WS):** P 20, inc 1 st in last st -- 22 sts. **Row 19  
(RS):** Inc 1 st in first st, k 21 sts -- 23 sts. **Row 20 (WS):**  
P2tog, p 20, inc 1 st in last st -- 23 sts. Place sts on  
holder. **Right Leg:** Cast on 4 sts. **Row 1 (RS):** K 4 sts.  
**Row 2 (WS):** Cast on 3 sts, k 4 sts -- 7 sts. **Row 3 (RS):**  
K 7, cast on 2 sts -- 9 sts. **Row 4 (WS):** Cast on 2 sts,  
p 9 -- 11 sts. **Rows 5-20:** Working in St st, foll chart for  
Back Right Leg through Row 20. Place sts on a holder.  
**Joining of Right & Left Legs: Next Row (RS):** Foll chart  
Row 21, k2tog, work across 21 sts of Right Leg, cast on  
12 sts for crotch, work across 21 sts of Left Leg, k2tog --  
56 sts. Cont to foll outer edge only of chart for Back

shaping, working incs and decs as shown (ignore any  
shaping lines within chart) through Row 112. Bind off.

## RIGHT LEG & FRONT:

Cast on 4 sts. Beg with Front Right Leg and work in  
St st, foll chart through Row 20, casting on 12 sts at end  
of Row 20 for crotch -- 34 sts. Foll chart from side (outer  
edge) as est to the line indicated for Right Front opening  
(ignore chart lines for Left Front opening.) Working in  
St st, foll chart through Row 67. On Row 68 beg shaping  
of face opening as indicated. Cont until Row 88 has been  
completed. Break yarn and sl sts onto a holder.

## LEFT LEG & FRONT:

Cast on 4 sts. Beg with Front Left Leg and work in St st,  
foll chart through Row 21, casting on 12 sts at end of  
Row 21 -- 34 sts. Foll chart from side (outer edge) as est  
to the line indicated for Left Front Opening (ignore chart  
lines for Right Front opening, foll chart from side edge as  
est to the line for the Left Front opening.) Working in St st,  
foll chart through Row 68. At end of Row 69, beg shaping  
of face opening as indicated. Cont until Row 88 has been  
completed. **Joining of Right & Left Front: Next Row  
(RS):** Cont to foll chart, work across Left Front sts, cast  
on 6 sts for top of face opening, work across Right Front  
sts. Cont to foll chart Rows 89-112. Bind off.

## FINISHING:

Beg at Right Front opening (as designated on chart),  
join yarn with a sl at and ch 1. Keeping work flat and  
to gauge, work picot edge as foll: \* 3 sc evenly spaced,  
ch 3 and sl st into last sc, rep from \* around entire  
opening, ending with 2 sc. **Join Front to Back:** With  
WS facing, position Right Front over Left (for girl, visa  
versa for boy), attach the Front to back with 1 row sc  
through all thicknesses. Cut velcro as needed and sew  
between the two fronts. **Tassel:** Cut 5 strands of yarn,  
approx 9" long. Fold 4 strands in half over the 5th;  
tie the 5th with a knot. Wrap the 5th strand around the  
top of the tassel at the knot and draw through with hook  
or tapestry needle. Attach to top of star.

## ABBREVIATIONS:

approx = approximately	p = purl
beg = begin(ning)	p2tog = purl 2 together
ch = chain	rep = repeat
cont = continue(s)(ing)	RS = right side
dec = decreas(e)(s)(ing)	sc = single crochet
est = established	sl st = slip stitch
foll = follow(s)(ing)	St st = stockinette stitch
inc = increas(e)(s)(ing)	tog = together
k = knit	st(s) = stitch(es)
k2tog = knit 2 together	WS = wrong side

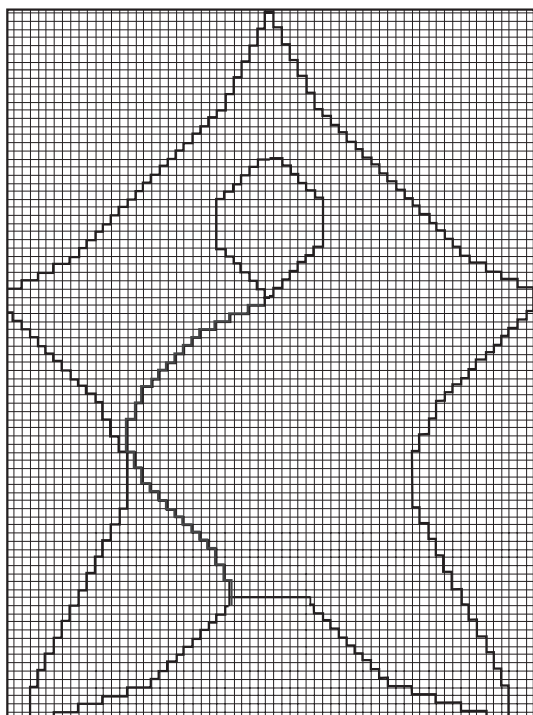
Every effort has been made to have knitting and crochet  
instructions accurate and complete. We cannot be responsible  
for variance of individual knitters and crocheters, human errors,  
or typographical mistakes

“FAMOUS FOR QUALITY SINCE 1878”  
**LION BRAND® YARNS**

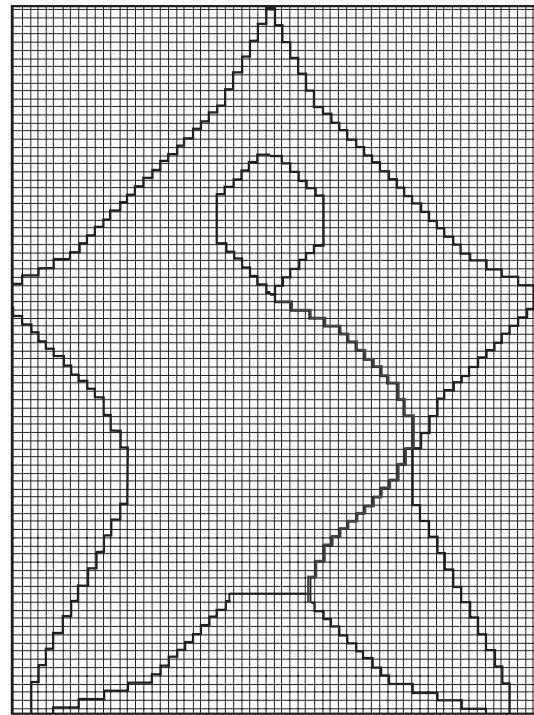
34 W. 15TH ST., NY, NY 10011 1-212-243-8995 <http://www.lionbrand.com>

# JIFFY® KNIT “DANCING STAR” BABY BUNTING

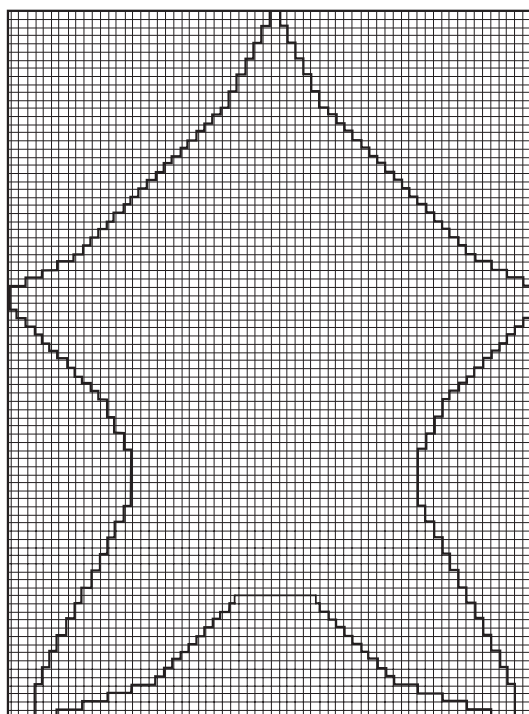
Item #638



Left Closing



Right Closing



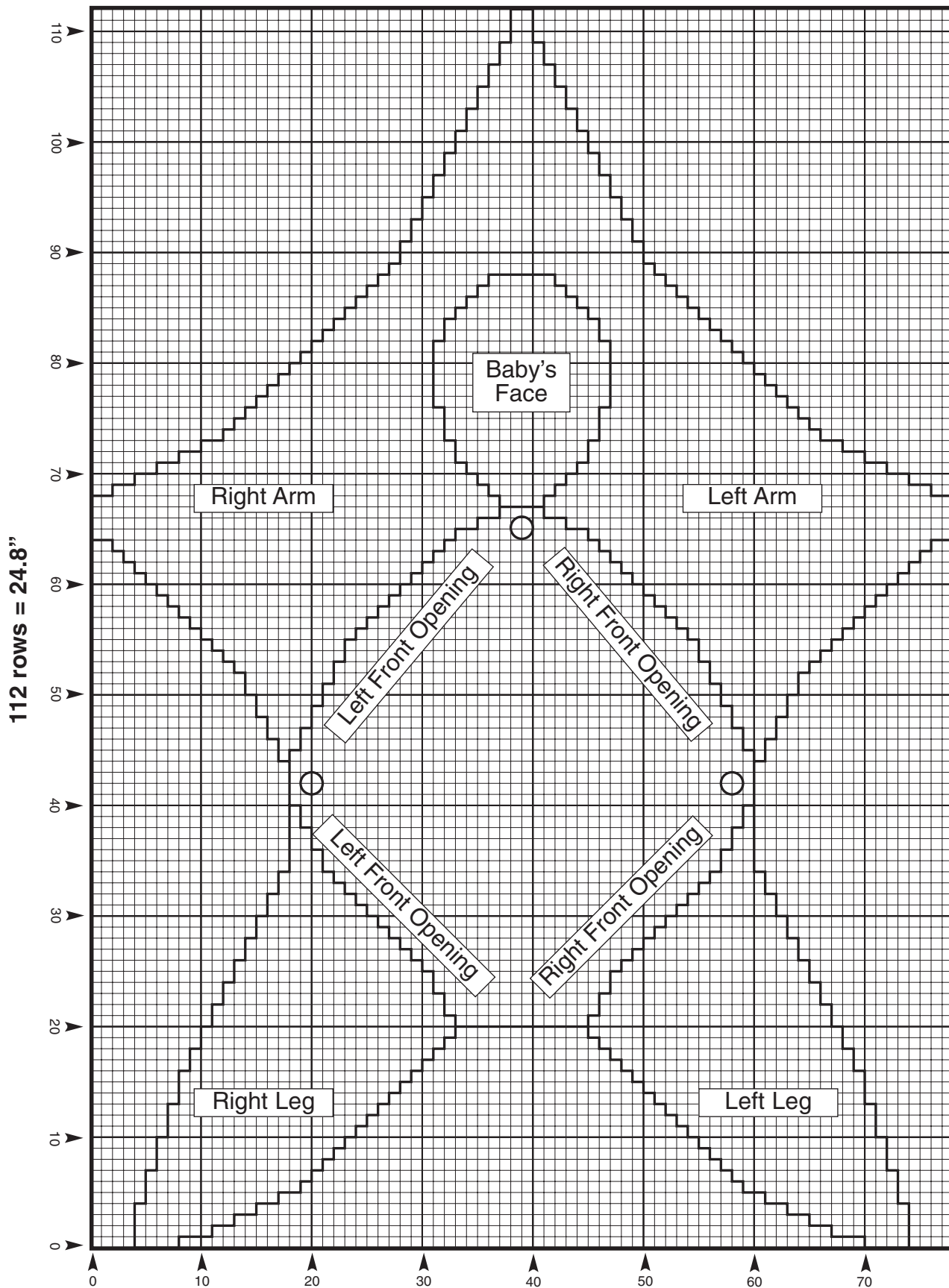
Back

“FAMOUS FOR QUALITY SINCE 1878”  
**LION BRAND® YARNS**

34 W. 15TH ST., NY, NY 10011 1-212-243-8995 <http://www.lionbrand.com>

# JIFFY® KNIT "DANCING STAR" BABY BUNTING

Item #638



112 rows = 24.8"

○ = optional velcro closings

78 sts = 22 1/4"