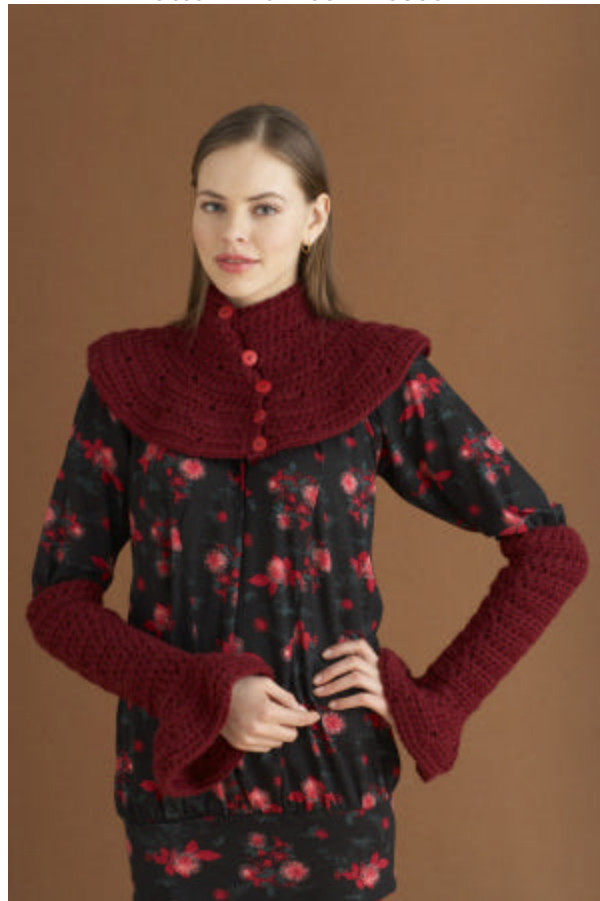




**Free Crochet Pattern
Lion Brand® Wool-Ease® Chunky
Collar And Arm Warmers**

Pattern Number: 70305AD



Free Crochet Pattern from Lion Brand Yarn Lion Brand® Wool-Ease® Chunky Collar And Arm Warmers

Pattern Number: 70305AD

SKILL LEVEL: Easy

SIZE: One Size

CORRECTIONS: None

MATERIALS

- 630-188 Lion Brand Wool-Ease® Chunky Yarn: Mulberry
3 Balls
- Lion Brand Crochet Hook - Size K-10.5
- Large-Eye Blunt Needles (Set of 6)
- Additional Materials
5 buttons, 3/4 in. (19 mm) diameter

GAUGE:

12 sts + 7 rows = 4 in. (10 cm) in hdc. BE SURE TO CHECK YOUR GAUGE. When you match the gauge in a pattern, your project will be the size specified in the pattern and the materials specified in the pattern will be sufficient. If it takes you less stitches and rows to make a 4 in. [10 cm] square, try using a smaller size hook or needles; if more stitches and rows, try a larger size hook or needles.

STITCH EXPLANATION:

hdc2tog (hdc decrease) Yarn over, insert hook into next st and draw up a loop. Yarn over, insert hook into next st and draw up a loop. Yarn over and draw through all loops on hook.

COLLAR

Ch 44.

Row 1: Hdc in 3rd ch from hook and each ch across - 42 hdc.

Rows 2-6: Ch 2, turn, hdc in each hdc across.

Row 7: Ch 2, turn, hdc in next 3 sts, ch 1, *hdc in next 4 sts, ch 1; rep from * 8 more times, hdc in last 3 sts - 10 ch-1 sps.

Row 8: Ch 2, turn, hdc in next 3 sts, 2 hdc in next ch-1 sp, *hdc in next 4 sts, 2 hdc in next ch-1 sp; rep from * 8 more times, hdc in last 3 sts - 62 hdc.

Row 9: Ch 2, turn, hdc in next 7 sts, ch 1, *hdc in next 6 sts, ch 1; rep from * 7 more times, hdc in last 7 sts - 9 ch-1 sps.

Row 10: Ch 2, turn, hdc in next 7 sts, 2 hdc in next ch-1 sp, *hdc in next 6 sts, 2 hdc in next ch-1 sp; rep from * 7 more times, hdc in last 7 sts - 80 hdc.

Row 11: Ch 2, turn, hdc in next 4 sts, ch 1, *hdc in next 8 sts, ch 1; rep from * 8 more times, hdc in last 4 sts - 10 ch-1 sps.

Row 12: Ch 2, turn, hdc in next 4 sts, 2 hdc in next ch-1 sp, *hdc in next 8 sts, 2 hdc in next ch-1 sp; rep from * 8 more times, hdc in last 4 sts - 100 hdc.

Row 13: Ch 2, turn, hdc in next 10 sts, ch 1, *hdc in next 10 sts, ch 1; rep from * 7 more times, hdc in last 10 sts - 9 ch-1 sps.

Row 14: Ch 2, turn, hdc in next 10 sts, 2 hdc in next ch-1 sp, *hdc in next 10 sts, 2 hdc in next ch-1 sp; rep from * 7 more times, hdc in last 10 sts - 118 hdc.

Row 15: Ch 2, turn, hdc in next 5 sts, ch 1, *hdc in next 12 sts, ch 1; rep from * 8 more times, hdc in last 5 sts - 10 ch-1 sps.

Row 16: Ch 2, turn, hdc in next 5 sts, 2 hdc in next ch-1 sp, *hdc in next 12 sts, 2 hdc in next ch-1 sp; rep from * 8 more times, hdc in last 5 sts - 138 hdc. Do not fasten off.

Buttonloop Band

Pivot to work along ends of rows.

Row 1: Work 18 sc evenly spaced along edge.

Row 2: Ch 1, turn, sc in first sc, *ch 3 for buttonloop, sc in next 4 sc; rep from * 3 more times, ch 3, sc in last sc - 5 buttonloops. Fasten off.

Buttonband

Join yarn with sl st on opposite edge.

Row 1: Work 18 sc evenly spaced along side edge.

Row 2: Ch 1, turn, sc in each sc across. Fasten off.

FINISHING

Sew on buttons opposite buttonloops. Weave in ends.

ARM WARMER (make 2)

Ch 22, being careful not to twist, join with sl st in first ch to form a ring.

Rnd 1: Ch 2, hdc in each ch around; join with sl st in first hdc - 22 hdc.

Rnds 2 and 3: Ch 2, turn, hdc in each st around; join with sl st in first hdc.

Rnd 4: Ch 2, turn, hdc in first 10 sts, hdc2tog, hdc in last 10 sts; join with sl st in first hdc - 21 hdc.

Rnds 5-7: Ch 2, turn, hdc in each st around; join with sl st in first hdc.

Rnd 8: Ch 2, turn, hdc in first 4 sts, hdc2tog, hdc in last 15 sts; join with sl st in first hdc - 20 hdc.

Rnds 9-11: Ch 2, turn, hdc in each st around; join with sl st in first hdc.

Rnd 12: Ch 2, turn, hdc in first 14 sts, hdc2tog, hdc in last 4 sts; join with sl st in first hdc - 19 hdc.

Rnds 13-15: Ch 2, turn, hdc in each st around; join with sl st in first hdc.

Rnd 16: Ch 2, turn, hdc in first 8 sts, hdc2tog, hdc in last 9 sts; join with sl st in first hdc - 18 hdc.

Rnd 17: Ch 2, turn, hdc in each st around; join with sl st in first hdc.

Rep Rnd 17 until piece measures about 10 in. (25.5 cm) from beginning.

Rnd 18: Ch 1, turn, sc in each st around; join with sl st in first sc.

Rnd 19: Ch 2, turn, hdc in first st, ch 1, *hdc in next 3 sts, ch 1; rep from * 4 more times, hdc in last 2 sts; join with sl st in first hdc - 6 ch-1 sps.

Rnd 20: Ch 2, turn, hdc in first 2 sts, 2 hdc in next ch-1 sp, *hdc in next 3 sts, 2 hdc in next ch-1 sp; rep from * 4 more times, hdc in last st; join with sl st in first hdc - 30 sts.

Rnd 21: Ch 2, turn, hdc in first 4 sts, ch 1, *hdc in next 5 sts, ch 1; rep from * 4 more times, hdc in last st; join with sl st in first hdc - 6 ch-1 sps.

Rnd 22: Ch 2, turn, hdc in first st, 2 hdc in next ch-1 sp, *hdc in next 5 sts, 2 hdc in next ch-1 sp; rep from * 4 more times, hdc in last 4 sts; join with sl st in first hdc - 42 sts.

Rnd 23: Ch 2, turn, hdc in first 2 sts, ch 1, *hdc in next 7 sts, ch 1; rep from * 4 more times, hdc in last 5 sts; join with sl st in first hdc - 6 ch-1 sps.

Rnd 24: Ch 2, turn, hdc in first 5 sts, 2 hdc in next ch-1 sp, *hdc in next 7 sts, 2 hdc in next ch-1 sp; rep from * 4 more times, hdc in last 2 sts; join with sl st in first hdc - 54 sts.

Rnd 25: Ch 2, turn, hdc in each st around; join with sl st in first hdc. Fasten off.

FINISHING

Weave in ends.

ABBREVIATIONS / REFERENCES	
Click for explanation and illustration	
<u>ch(s) = chain(s)</u>	<u>ch-space = space previously made</u>
<u>hdc = half double crochet</u>	<u>rep = repeat(s)(ing)</u>
<u>sc = single crochet</u>	<u>sl st = slip stitch</u>
<u>sp(s) = space(s)</u>	<u>st(s) = stitch(es)</u>

Learn to crochet instructions: <http://learnToCrochet.LionBrand.com>

Every effort has been made to have the knitting and crochet instructions accurate and complete. We cannot be responsible for variance of individual knitters and crocheters, human errors, or typographical mistakes.

**Wool-Ease® Chunky (Article #650) is a bulky weight yarn -- a little heavier than original (worsted weight)*



Wool-Ease, but not as heavy as (super chunky weight) Wool-Ease Thick & Quick. It works up quickly and easily, yet is not really bulky. 80% Acrylic, 20% Wool. Packaged in 5 oz/140g; 153 yd/140m skeins.

We want your project to be a success! If you need help with this or any other Lion Brand pattern, e-mail support is available 7 days per week. Just click [here](#) to explain your problem and someone will help you!

**For hundreds of free patterns, visit our website www.LionBrand.com
To order visit our website www.e-yarn.com or call: (800) 258-YARN (9276) any time!**

Copyright © 1998-2008 Lion Brand Yarn Company, all rights reserved. No pattern or other material may be reproduced -- mechanically, electronically, or by any other means, including photocopying -- without written permission of Lion Brand Yarn Company. If you would like to send a copy of this page to someone, click [here](#) and we will be happy to do it for you.