



**Knitting Patterns for Sale**  
**Lion Brand® Lion Wool**  
**Branching Out Bag**

Pattern Number: 70521AD



## Knitting Patterns for Sale from Lion Brand Yarn

### Lion Brand® Lion Wool

### Branching Out Bag

Pattern Number: 70521AD

**SKILL LEVEL:** Easy +

**SIZE:** One Size

About 11 1/2 in. wide x 8 in. high (29 x 20.5 cm), after felting

**CORRECTIONS:** None

#### MATERIALS

- 820-125 Lion Brand Lion Wool: Cocoa  
2 Balls (A)
- 820-149 Lion Brand Lion Wool: Pearl Gray  
1 Ball (B)
- Lion Brand Knitting Needles- Size 6 [4.00 mm]
- Large-Eye Blunt Needles (Set of 6)

#### GAUGE:

20 sts + 28 rows = 4 in. (10 cm) in St st (k on RS, p on WS). EXACT GAUGE IS NOT ESSENTIAL FOR THIS PROJECT.

BE SURE TO CHECK YOUR GAUGE. When you match the gauge in a pattern, your project will be the size specified in the pattern and the materials specified in the pattern will be sufficient. If it takes you less stitches and rows to make a 4 in. [10 cm] square, try using a smaller size hook or needles; if more stitches and rows, try a larger size hook or needles.

#### FRONT

With A, cast on 51 sts.

**Rows 1-10:** Knit.

**Row 11:** Knit; at end of row, pivot work and pick up and k4 sts along edge of piece - 55 sts.

**Row 12:** Purl; at end of row, pivot work and pick up and p4 sts along edge of piece - 59 sts.

Work 14 rows in St st (k on RS, p on WS).

#### Chart

**Next Row:** Continue in St st and work Row 1 of chart. Continue as established until chart has been completed, then work 16 rows in St st with A only.

**Next Row:** K20, bind off 19 sts, k20 - 40 sts.

**Next Row:** (K5, k2tog) twice, k6, cast on 19 sts, (k5, k2tog) twice, k6 - 55 sts.

With A, knit 14 rows. Bind off.

#### BACK

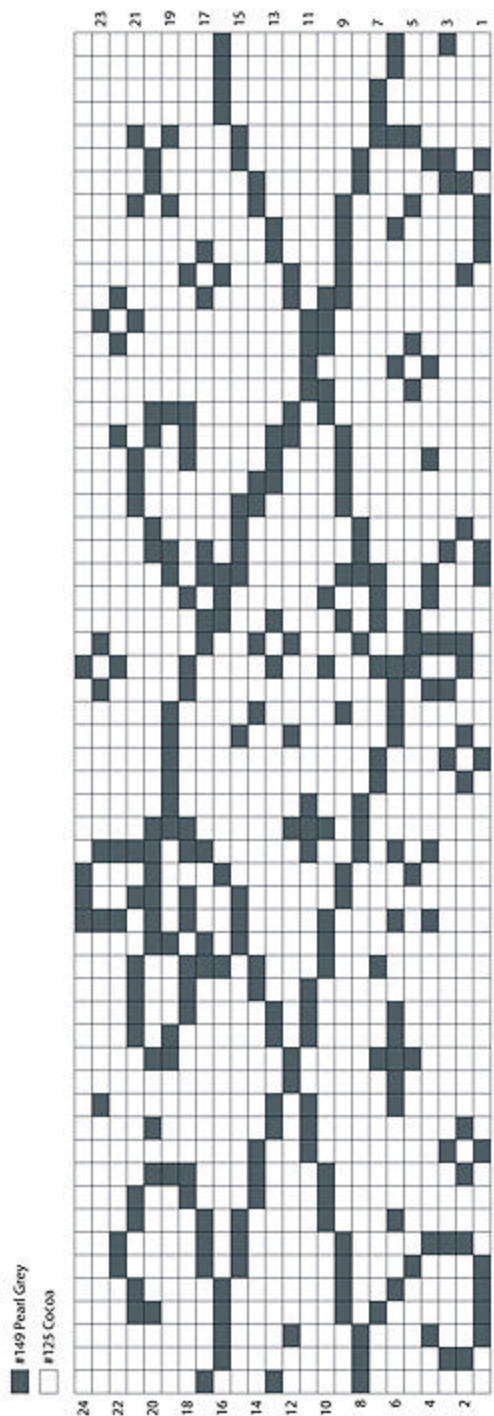
Work same as Front.

#### FINISHING

Seam Front and Back together along side and lower edges. Weave in ends.

#### Felting

Wash by machine on a hot wash/cold rinse cycle with detergent and several pieces of clothing to agitate. To felt additionally, dry by machine on a regular setting until almost dry. Remove from dryer and pull into shape.



ABBREVIATIONS / REFERENCES	
Click for explanation and illustration	
<u>k = knit</u>	<u>k2tog = knit 2 together</u>
<u>p = purl</u>	<u>RS = right side</u>
<u>St st = Stockinette stitch</u>	<u>st(s) = stitch(es)</u>
<u>WS = wrong side</u>	

---

Every effort has been made to have the knitting and crochet instructions accurate and complete. We cannot be responsible for variance of individual knitters and crocheters, human errors, or typographical mistakes.



\*Lion Wool (Article #820) is a worsted-weight 100% wool. Solid colors are packaged in 3 oz [85 g]/158 yd [144 m] balls; variegated colors are 2 3/4 oz [78 g]/143 yds [131 m]

We want your project to be a success! If you need help with this or any other Lion Brand pattern, e-mail support is available 7 days per week. Just click [here](#) to explain your problem and someone will help you!

**For hundreds of free patterns, visit our website [www.LionBrand.com](http://www.LionBrand.com)**

**To order visit our website [www.e-yarn.com](http://www.e-yarn.com) or call: (800) 258-YARN (9276) any time!**

Copyright ©1998-2005 Lion Brand Yarn Company, all rights reserved. No pattern or other material may be reproduced -- mechanically, electronically, or by any other means, including photocopying -- without written permission of Lion Brand Yarn Company. If you would like to send a copy of this page to someone, click [here](#) and we will be happy to do it for you.