



Free Knitting Pattern
Lion Brand® Wool-Ease® Thick & Quick®
Child's Dog Motif Pullover
Pattern Number: 70554AD



Free Knitting Pattern from Lion Brand Yarn
Lion Brand® Wool-Ease® Thick & Quick®
Child's Dog Motif Pullover
Pattern Number: 70554AD

SKILL LEVEL: Easy +

SIZE:

Child's 2 (4, 6, 8)

Finished Chest 27 (30 1/2, 32, 33 1/2) in. (68.5 (77.5, 81.5, 85) cm)

Finished Length 14 (15, 17, 18) in. (35.5 (38, 43, 45.5) cm)

CORRECTIONS: (applied Feb 8, 2010)

FRONT

With larger needles and A, cast on 34 (38, 40, 42) sts. Work as for Back until piece measures 6 (7, 8, 9) in. (15 (17.5, 20.5, 23) cm) from beg, end with a WS row.

Next Row (RS): K7 (~~9, 10, 11~~), **K9 (11, 12, 13)** place marker, work Row 1 of Dog Motif Chart over next 20 **16** sts, place marker, K7 (~~9, 10, 11~~), **K9 (11, 12, 13)**). Continue to work chart between markers until all ~~16~~ **14** rows have been completed.

MATERIALS

- 640-134 Lion Brand Wool-Ease Thick & Quick Yarn: Citron
4 (4,5,6) Balls (A)
- 640-149 Lion Brand Wool-Ease Thick & Quick Yarn: Charcoal
1 Ball (B)
- Lion Brand Knitting Needles- Size 13 [9 mm]
- Lion Brand Knitting Needles Size 11 [8 mm]
- Lion Brand Stitch Markers
- Large-Eye Blunt Needles (Set of 6)

GAUGE:

Exact gauge is not important to this project

BACK

With larger needles and A, cast on 34 (38, 40, 42) sts. Work in St st (k on RS, p on WS) until piece measures 14 (15, 17, 18) in.

(35.5 (38, 43, 45.5) cm) from beg, end with a WS row. Bind off.

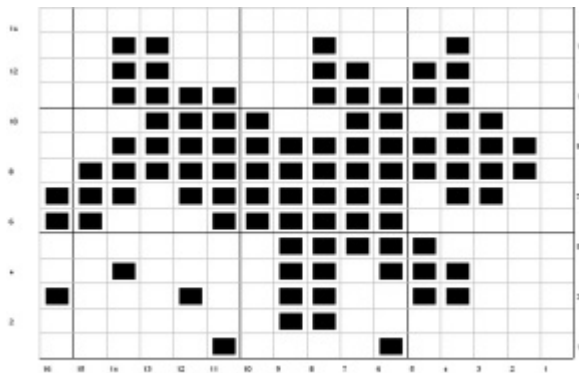
FRONT

With larger needles and A, cast on 34 (38, 40, 42) sts. Work as for Back until piece measures 6 (7, 8, 9) in. (15 (17.5, 20.5, 23) cm) from beg, end with a WS row.

Next Row (RS): K9 (11, 12, 13), place marker, work Row 1 of Dog Motif Chart over next 16 sts, place marker, k9 (11, 12, 13). Continue to work chart between markers until all 14 rows have been completed. Work in St st with A only until piece measures 11 1/2 (12 1/2, 14, 15) in. (29 (31.5, 35.5, 38) cm) from beg, end with a WS row.

Shape Neck

Next Row: K14 (15, 16, 16) sts, join a 2nd ball of yarn and bind off next 6 (8, 8, 10) sts, k to end. Working both sides at once with separate balls of yarn, dec 1 st at each neck edge every other row 3 times - 11 (12, 13, 13) sts. Work until same length as Back to shoulders. Bind off.



SLEEVES (make 2)

With larger needles and A, cast on 18 (20, 20, 22) sts. Work in St st, inc 1 st each edge every 4th row 8 (9, 9, 9) times - 34 (38, 38, 40) sts. Work even until Sleeve measures 11 (12, 12 1/2, 13 1/2) in. (28 (30.5, 31.5, 34.5) cm) from beg. Bind off.

FINISHING

Sew one shoulder seam.

Neckband

From RS with smaller needles, join yarn at unseamed shoulder. Pick up and k 34 (38, 40, 44) sts evenly spaced around neck. Work in St st for 5 rows. Bind off. Sew remaining shoulder including neckband. Sew in Sleeves. Sew side and Sleeve seams. Weave in ends.

ABBREVIATIONS / REFERENCES

[Click for explanation and illustration](#)

beg = begin(s)(ning)	dec = decreas(e)(s)(ing)
inc = increas(e)(s)(ing)	k = knit
p = purl	RS = right side
St st = Stockinette stitch	st(s) = stitch(es)

Learn to knit instructions: <http://learnToKnit.LionBrand.com>

Every effort has been made to have the knitting and crochet instructions accurate and complete. We cannot be responsible for variance of individual knitters and crocheters, human errors, or typographical mistakes.

We want your project to be a success! If you need help with this or any other Lion Brand pattern, e-mail support is available 7 days per week. Just click [here](#) to explain your problem and someone will help you!

For thousands of free patterns, visit our website www.LionBrand.com

To order visit our website www.lionbrand.com or call: (800) 258-YARN (9276) any time!

Copyright ©1998-2009 Lion Brand Yarn Company, all rights reserved. No pattern or other material may be reproduced -- mechanically, electronically, or by any other means, including photocopying -- without written permission of Lion Brand Yarn Company.