



**Knitting Patterns for Sale**  
**Lion Brand® Wool-Ease®**  
**Downloadable Pattern: Fair Isle Capelet**  
Pattern Number: 70556AD



**Knitting Patterns for Sale from Lion Brand Yarn**  
**Lion Brand® Wool-Ease®**  
**Downloadable Pattern: Fair Isle Capelet**  
Pattern Number: 70556AD

**SKILL LEVEL:** Intermediate

**SIZE:**

S/M (L, 1X/2X)

**Finished Circumference (at lower edge)** 44 (49 1/2, 54) in. (112 (125, 138.5) cm)

**Finished Length** 17 (17 1/2, 18 1/2) in. (43 (44, 47) cm)

**CORRECTIONS:** None

**MATERIALS**

- 620-153 Lion Brand Wool-Ease® Yarn: Black  
2 2, 3 Balls (A)
- 620-151 Lion Brand Wool-Ease® Yarn: Grey Heather  
2 2, 3 Balls (B)
- 620-123 Lion Brand Wool-Ease® Yarn: Seaspray  
1 1, 2 Ball (C)
- 620-172 Lion Brand Wool-Ease® Yarn: Lemongrass  
1 1, 1 Ball (D)
- 620-129 Lion Brand Wool-Ease® Yarn: Cocoa  
1 1, 1 Ball (E)
- Lion Brand Stitch Markers
- Large-Eye Blunt Needles (Set of 6)
- Additional Materials  
Circular needle size 8 (5 mm), 32 in. (80 cm) long

**GAUGE:**

18 sts + 22 rows = 4 in. (10 cm) in St st (k every rnd) Fair Isle pattern worked in the round. BE SURE TO CHECK YOUR GAUGE. When you match the gauge in a pattern, your project will be the size specified in the pattern and the materials specified in the pattern will be sufficient. If it takes you less stitches and rows to make a 4 in. [10 cm] square, try using a smaller size hook or needles; if more stitches and rows, try a larger size hook or needles.

**NOTES:**

1. Fair Isle charts are worked in St st in the rnd (k every rnd), carry color not in use across wrong side of work.
2. Work charts from right to left on all rnds.
3. Capelet is worked from the lower edge up to the neck.

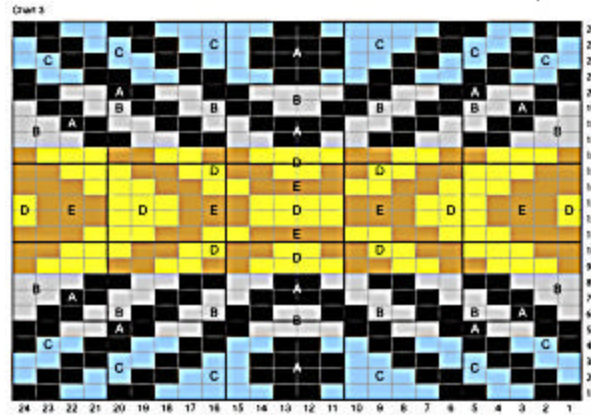
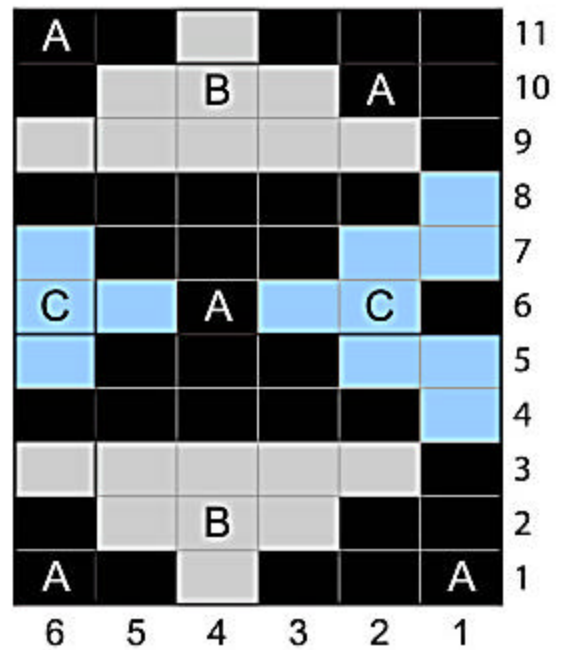


Chart 1



A #153 Black

B #151 Grey Heather

C #123 Seaspray

**CAPELET**

With A, cast on 198 (222, 246) sts. Join, being careful not to twist sts. Place marker for beginning of rnd.  
 Work in Garter st worked in the rnd (purl 1 rnd, knit 1 rnd) for 4 (4, 6) rnds.  
 Change to St st, and work 11 rnds of Chart 1.

With A, k 1 rnd.  
 With D, k 1 (2, 2) rnds.  
 Work 9 rnds of Chart 2.

Chart 2

D						9
		E			D	8
D						7
						6
E		D			E	5
						4
D						3
		E			D	2
D						1
	6	5	4	3	2	1

D #172 Lemongrass

E #129 Cocoa

With D, k 1 (2, 2) rnds.

With A, k 1 rnd.

Work 11 rnds of Chart 1.

With A, \*k31 (35, 39), k2tog; rep from \* around - 192 (216, 240) sts.

Work 24 rnds of Chart 3.

With A, \*k14 (16, 18), k2tog; rep from \* around - 180 (204, 228) sts.

Work 11 rnds of Chart 1.

With A, \*k8 (4, 4), k2tog; rep from \* around - 162 (170, 190) sts.

With D, k 1 (2, 2) rnd(s), decrease 0 (2, 4) sts evenly spaced on last rnd - 162 (168, 186) sts.

Work 9 rnds of Chart 2.

With D, k 1 (2, 2) rnds.

With A, \*k7 (6, 4), k2tog; rep from \* around - 144 (147, 155) sts.

With A, work in Garter st for 4 (4, 6) rnds.

Bind off.

## FINISHING

Weave in ends.

### ABBREVIATIONS / REFERENCES

Click for explanation and illustration

<u>k = knit</u>	<u>k2tog = knit 2 together</u>
<u>rep = repeat(s)(ing)</u>	<u>rnd(s) = round(s)</u>
<u>St st = Stockinette stitch</u>	<u>st(s) = stitch(es)</u>

Learn to knit instructions: <http://learnToKnit.LionBrand.com>

We want your project to be a success! If you need help with this or any other Lion Brand pattern, e-mail support is available 7 days per week. Just click [here](#) to explain your problem and someone will help you!

**For hundreds of free patterns, visit our website [www.LionBrand.com](http://www.LionBrand.com)**

**To order visit our website [www.e-yarn.com](http://www.e-yarn.com) or call: (800) 258-YARN (9276) any time!**

Copyright ©1998-2005 Lion Brand Yarn Company, all rights reserved. No pattern or other material may be reproduced -- mechanically, electronically, or by any other means, including photocopying -- without written permission of Lion Brand Yarn Company. If you would like to send a copy of this page to someone, click [here](#) and we will be happy to do it for you.