



**Free Knitting Pattern**  
**Lion Brand® Wool-Ease®**  
**Fair Isle Scarf**  
**Pattern Number: 70533AD**



**Free Knitting Pattern from Lion Brand Yarn**  
**Lion Brand® Wool-Ease®**  
**Fair Isle Scarf**  
**Pattern Number: 70533AD**

**SKILL LEVEL:** Easy +

**SIZE:** One Size  
6 1/2 x 43 in. (16.5 x 109 cm)

**CORRECTIONS:** None

**MATERIALS**

- 620-173 Lion Brand Wool-Ease® Yarn: Sage  
2 Balls (A)

- 620-191 Lion Brand Wool-Ease® Yarn: Violet  
1 Ball (B)
- 620-099 Lion Brand Wool-Ease® Yarn: Fisherman  
1 Ball (C)
- Large-Eyed Blunt Needles
- Additional Materials  
Circular needle size 7 (4.5 mm), 36 in. (91.5 cm)

**GAUGE:**

18 sts + 20 rows = 4 in. (10 cm) in Stockinette st (k on RS, p on WS). BE SURE TO CHECK YOUR GAUGE. When you match the gauge in a pattern, your project will be the size specified in the pattern and the materials specified in the pattern will be sufficient. If it takes you less stitches and rows to make a 4 in. [10 cm] square, try using a smaller size hook or needles; if more stitches and rows, try a larger size hook or needles.

**STITCH EXPLANATION:****PATTERN STITCHES****K1, p1 Rib**

**Row 1:** K1, \*p1, k1; rep from \* to end of row.

**Row 2:** K the knit sts and p the purl sts.

Rep Row 2 for K1, p1 Rib.

**NOTES:**

- 1) Fair Isle is color technique that involves knitting a pattern with two or more colors of yarn in a row. Unlike intarsia knitting, the colors used in Fair Isle knitting are carried across an entire row.
- 2) Carry colors not in use across wrong side of work. Pick up new color from under old color to twist yarns and prevent holes.
- 3) If you are following the Fair Isle chart, work all RS rows from right to left and work all WS rows from left to right.
- 4) Circular needle is used to accommodate large number of sts. Work back and forth on circular needle as if working on straight needles.

**SCARF**

With A, cast on 195 sts.

Work in K1, p1 Rib for 1 in. (2.5 cm).

**NOTE** Work Rows 1-23 in Stockinette st following Fair Isle chart OR following written instructions.

**Row 1 (Right Side):** \*K1 with A, k1 with C, k3 with A, k1 with C, k2 with A; rep from \* across to last 3 sts, k1 with A, k1 with C, k1 with A.

**Row 2:** P1 with C, \*p1 with A, p1 with C, rep from \* across.

**Row 3:** K3 with A, \*k1 with C, k3 with A, rep from \* across.

**Row 4:** P1 with B, p1 with A, p1 with B, \*p5 with A, p1 with B, p1 with A, p1 with B; rep from \* across.

**Row 5:** \*K1 with A, k1 with B, k6 with A; rep from \*, end k1 with A, k1 with B, k1 with A.

**Row 6:** Rep Row 4.

**Row 7:** K5 with A, \*k1 with C, k7 with A, rep from \* to last 6 sts, k1 with C, k5 with A.

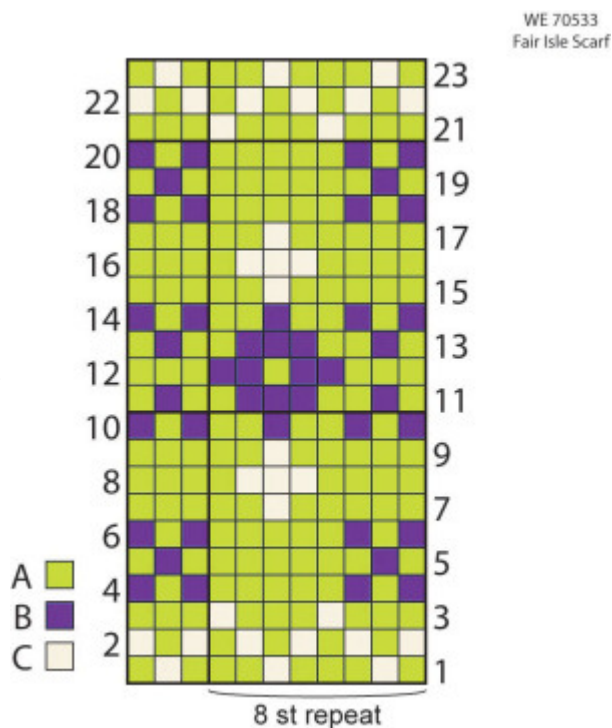
**Row 8:** P4 with A, \*p3 with C, p5 with A, rep from \* across.

**Row 9:** Rep Row 7.

**Row 10:** P1 with B, p1 with A, p1 with B, \*p2 with A, p1 with B, p2 with A, p1 with B, p1 with A, p1 with B; rep from \* across.

**Row 11:** \*K1 with A, k1 with B, k2 with A, k3 with B, k1 with A, rep from \*, to last 3 sts, k1 with A, k1 with B, k1 with A.

**Row 12:** P3 with A, \*p2 with B, p1 with A, p2 with B, p3 with A,



rep from \* across.

**Row 13:** Rep Row 11.

**Row 14:** Rep Row 10.

**Rows 15-17:** Rep Rows 7-9.

**Rows 18-20:** Rep Rows 4-6.

**Row 21:** Rep Row 3.

**Row 22:** Rep Row 2.

**Row 23:** Rep Row 1. Work in K1, p1 Rib for 1 in. (2.5 cm). Bind off.

## FINISHING

Weave in ends.

### ABBREVIATIONS / REFERENCES

Click for explanation and illustration

<u>k = knit</u>	<u>p = purl</u>
<u>rep = repeat(s)(ing)</u>	<u>St st = Stockinette stitch</u>
<u>st(s) = stitch(es)</u>	

Learn to knit instructions: <http://learnToKnit.LionBrand.com>

Every effort has been made to have the knitting and crochet instructions accurate and complete. We cannot be responsible for variance of individual knitters and crocheters, human errors, or typographical mistakes.

We want your project to be a success! If you need help with this or any other Lion Brand pattern, e-mail support is available 7 days per week. Just click [here](#) to explain your problem and someone will help you!

**For hundreds of free patterns, visit our website [www.LionBrand.com](http://www.LionBrand.com)**

**To order visit our website [www.e-yarn.com](http://www.e-yarn.com) or call: (800) 258-YARN (9276) any time!**

Copyright ©1998-2005 Lion Brand Yarn Company, all rights reserved. No pattern or other material may be reproduced -- mechanically, electronically, or by any other means, including photocopying -- without written permission of Lion Brand Yarn Company. If you would like to send a copy of this page to someone, click [here](#) and we will be happy to do it for you.