



Crochet Patterns for Sale
Lion Brand Wool-Ease Chunky
Downloadable Pattern: Argyle Crochet Afghan

Pattern Number: 70664AD



Crochet Patterns for Sale from Lion Brand Yarn
Lion Brand Wool-Ease Chunky
Downloadable Pattern: Argyle Crochet Afghan

Pattern Number: 70664AD

SKILL LEVEL: [Intermediate](#)

SIZE: One Size
46 x 55 in. (117 x 139.5 cm)

CORRECTIONS: None

MATERIALS

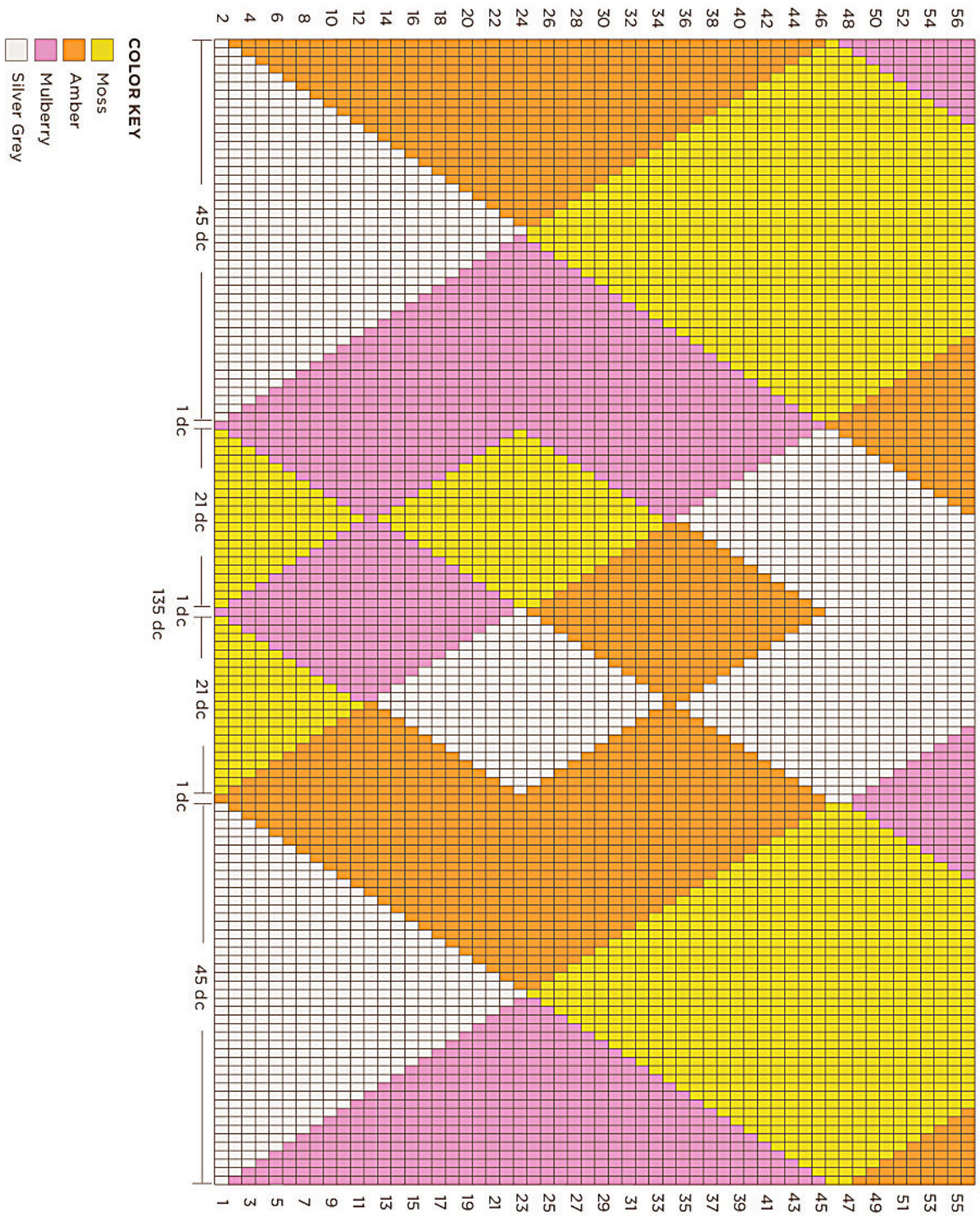
- 630-155 [Lion Brand Wool-Ease® Chunky Yarn: Silver Grey](#)
3 Balls (A)
- 630-186 [Lion Brand Wool-Ease® Chunky Yarn: Amber](#)
3 Balls (B)
- 630-131 [Lion Brand Wool-Ease® Chunky Yarn: Moss](#)
3 Balls (C)
- 630-188 [Lion Brand Wool-Ease® Chunky Yarn: Mulberry](#)
3 Balls (D)
- Lion Brand Crochet Hook - Size K-10.5
- Large-Eye Blunt Needles (Set of 6)

GAUGE:

10 dc + 5.5 rows = 4 in. (10 cm). BE SURE TO CHECK YOUR GAUGE. When you match the gauge in a pattern, your project will be the size specified in the pattern and the materials specified in the pattern will be sufficient. If it takes you less stitches and rows to make a 4 in. [10 cm] square, try using a smaller size hook or needles; if more stitches and rows, try a larger size hook or needles.

NOTES:

To change color, work last st until 2 loops remain on hook, yo with new color to complete st.
Use a separate ball for each color section.
When working chart, work RS rows from right to left, and WS rows from left to right.



AFGHAN

With A, ch 137.

Row 1: Dc in 3rd ch from hook, dc in next 43 ch changing to B in last st, with B, dc in next ch changing to C, with C, dc in next 21 ch changing to D in last st, with D, dc in next ch changing to C, with C, dc in next 21 ch changing to D in last st, with D, dc in next ch changing to A, with A dc to end of row changing to B in last st.

Row 2: Ch 3 (counts as first dc), turn. Working in dc, follow Row 2 of chart.

Rows 3 - 56: Ch 3, turn, continue to work in dc following chart. At end of Row 56, fasten off.

FINISHING

Edging

With RS facing, join A with sl st anywhere along edge of Afghan. Ch 1, sc evenly around Afghan working 3 sc in each corner. Fasten off. Weave in ends.

ABBREVIATIONS / REFERENCES	
Click for explanation and illustration	
<u>ch(s) = chain(s)</u>	<u>dc = double crochet</u>
<u>RS = right side</u>	<u>sc = single crochet</u>
<u>sl st = slip stitch</u>	<u>st(s) = stitch(es)</u>
<u>WS = wrong side</u>	<u>yo = yarn over</u>

Learn to crochet instructions: <http://learnToCrochet.LionBrand.com>

Every effort has been made to have the knitting and crochet instructions accurate and complete. We cannot be responsible for variance of individual knitters and crocheters, human errors, or typographical mistakes.

We want your project to be a success! If you need help with this or any other Lion Brand pattern, e-mail support is available 7 days per week. Just click [here](#) to explain your problem and someone will help you!

For hundreds of free patterns, visit our website www.LionBrand.com

To order visit our website www.e-yarn.com or call: (800) 258-YARN (9276) any time!

Copyright © 1998-2005 Lion Brand Yarn Company, all rights reserved. No pattern or other material may be reproduced -- mechanically, electronically, or by any other means, including photocopying -- without written permission of Lion Brand Yarn Company. If you would like to send a copy of this page to someone, click [here](#) and we will be happy to do it for you.