



Free Knitting Pattern
Lion Brand® Wool-Ease® Thick & Quick®
Snow Day Cap
Pattern Number: 80102AD



This warm fair isle hat is knit in the round.

Free Knitting Pattern from Lion Brand Yarn

Lion Brand® Wool-Ease® Thick & Quick®

Snow Day Cap

Pattern Number: 80102AD

SKILL LEVEL: Easy +

SIZE: One Size

20 in. (51 cm) circumference, will stretch to fit a range of sizes.

CORRECTIONS: None

MATERIALS

- 640-106 Lion Brand Wool-Ease® Thick & Quick Yarn: Sky Blue
1 Ball (A)
- 640-099 Lion Brand Wool-Ease® Thick & Quick Yarn: Fisherman
1 Ball (B)
- Lion Brand Stitch Markers
- Large-Eyed Blunt Needles
- Pom pom Maker
- Additional Materials
Double pointed knitting needles size 13 (9 mm) (set of 4)

GAUGE:

9 sts + 12 rows = 4 in. (10 cm) in St st in the round (k every rnd). BE SURE TO CHECK YOUR GAUGE. When you match the gauge in a pattern, your project will be the size specified in the pattern and the materials specified in the pattern will be sufficient. If it takes you less stitches and rows to make a 4 in. [10 cm] square, try using a smaller size hook or needles; if more stitches and rows, try a larger size hook or needles.

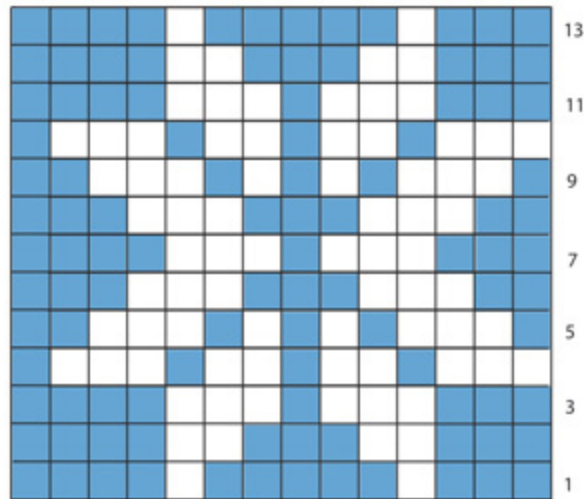
STITCH EXPLANATION:

K1, p1 Rib (over even number of sts)

Rnd 1: *K1, p1; rep from * to end.
Rep Rnd 1 for K1, p1 Rib.

NOTES:

- 1) Cap is worked in Fair Isle, in St st in the rnd (k every rnd). Carry color not in use along wrong side of work.
- 2) Work chart from right to left on all rnds.



CAP

With A, cast on 42 sts. Divide sts evenly onto 3 needles and join, being careful not to twist. Place marker for beg of rnd. Work 2 rnds in K1, p1 Rib.

Rnd 1: Working in St st in the rnd (k every rnd) and following chart for colors, rep 14 sts of chart 3 times around.

Rnds 2-13: Working in St st, work Rows 2-13 of chart. At end of Rnd 13, cut B. Continue with A only.

Shape Crown

Rnd 14: With A, *k5, k2tog; rep from * around—36 sts.

Rnd 15: Knit.

Rnd 16: *K4, k2tog; rep from * around—30 sts.

Rnd 17: Knit.

Rnd 18: *K3, k2tog, rep from * around—24 sts.

Rnd 19: Knit.

Rnd 20: *K2, k2tog, rep from * around—18 sts.

Rnd 21: Knit.

Rnd 22: *K1, k2tog, rep from * around—12 sts.

Rnd 23: K2tog around—6 sts.

Cut yarn leaving a long tail and thread tail through remaining 6 sts. Pull tightly together and fasten off.

FINISHING

Following package directions, with B, make a pom pom and tie to top of Hat. Weave in ends.

ABBREVIATIONS / REFERENCES	
Click for explanation and illustration	
beg = begin(s)(ning)	k = knit
k2tog = knit 2 together	rep = repeat(s)(ing)
rnd(s) = round(s)	st(s) = stitch(es)

Learn to knit instructions: <http://learnToKnit.LionBrand.com>

variance of individual knitters and crocheters, human errors, or typographical mistakes.

We want your project to be a success! If you need help with this or any other Lion Brand pattern, e-mail support is available 7 days per week. Just click [here](#) to explain your problem and someone will help you!

For hundreds of free patterns, visit our website www.LionBrand.com

To order visit our website www.e-yarn.com or call: (800) 258-YARN (9276) any time!

Copyright ©1998-2005 Lion Brand Yarn Company, all rights reserved. No pattern or other material may be reproduced -- mechanically, electronically, or by any other means, including photocopying -- without written permission of Lion Brand Yarn Company. If you would like to send a copy of this page to someone, click [here](#) and we will be happy to do it for you.