



Free Knitting Pattern
Lion Brand® Vanna's Choice®
Fireside Patchwork Afghan
Pattern Number: 80753AD



Designed by Nicky Epstein

Free Knitting Pattern from Lion Brand Yarn

Lion Brand® Vanna's Choice®

Fireside Patchwork Afghan

Pattern Number: 80753AD

SKILL LEVEL: Intermediate

SIZE: One Size

About 38 x 56 in. (96.5 x 142 cm)

Each block measures about 8 1/2 x 10 1/2 in. (21.5 x 26.5 cm)

CORRECTIONS: (applied Mar 22, 2010)

Block 1

Rows 29–56: ~~Rep Rows 1–28.~~ Rep established pattern, as follows: Work center 24 sts as for Rows 1-28. Work first and last 9 sts as for Rows 5-28, then as for Rows 5-8.

Block 2

Row 1 and all WS rows: Purl.

Row 2: K2, *RT LT, k4, ~~LT~~ RT; rep from * to last 2 sts, end k2.

Row 4: K3, *RT LT, k2, ~~LT~~ RT, k2; rep from * end last rep k3.

Row 6: K4, *RT LT, ~~LT~~ RT, k4; rep from * to end.

Row 8: K5, *LT, k6; rep from * end last rep k5.

Row 10: ~~Rep Row 6.~~ K4, *RT, LT, k4; rep from * to end.

Row 12: ~~Rep Row 4.~~ K3, *RT, k2, LT, k2; rep from * end last rep k3.

Row 14: ~~Rep Row 2.~~ K2, *RT, k4, LT; rep from * to last 2 sts, end k2.

Row 16: K1, RT, *k6, LT; rep from * end k1.

Repeat Rows 1-16 three times for a total of 48 rows, then rep Rows 1-8 once more. Bind off.

Block 3 chart has been corrected.

BLOCK 4 (make 3)

With E, cast on 36 sts. Beg with a k row, work in St st for 4 rows.

Next Row (RS): Join B A. Knit, working 4-st rep of Row 1 of Block 4 chart across row for a total of 9 times.

Join A B. Continue to work in St st, following chart, alternating B and A, until piece measures about 9 in. (23 cm) from beg; end with a WS row.

With E, work 4 rows in St st. Bind off.

Block 5

With D, cast on ~~38~~ 37 sts. Beg with a k row, work in St st for ~~6~~ 10 rows.

Continue in St st and work Rows 1-15 of Block 5 chart.

Cut A. With D, work 7 rows in St st.

Continue in St st and work Rows 1-15 of Block 5 chart.

Cut A. With D work ~~6~~ 9 rows in St st.

Bind off.

MATERIALS

- 860-099 Lion Brand Vanna's Choice Yarn: Linen
4 A Balls
- 860-125 Lion Brand Vanna's Choice Yarn: Taupe
3 B Balls
- 860-127 Lion Brand Vanna's Choice Yarn: Espresso
2 C Balls

- 860-126 Lion Brand Vanna's Choice Yarn: Chocolate
2 D Balls
- 860-153 Lion Brand Vanna's Choice Yarn: Black
2 E Balls
- Lion Brand Knitting Needles- Size 8 [5 mm]
- Lion Brand Cable Needles (Set of 2)
- Large-Eye Blunt Needles (Set of 6)
- Additional Materials
Circular knitting needle size 8 (5 mm), 36 in. (91.5 cm) for borders.

GAUGE:

16 sts + 22 rows = 4 in. (10 cm) over St st (k on RS, p on WS). BE SURE TO CHECK YOUR GAUGE. When you match the gauge in a pattern, your project will be the size specified in the pattern and the materials specified in the pattern will be sufficient. If it takes you less stitches and rows to make a 4 in. [10 cm] square, try using a smaller size hook or needles; if more stitches and rows, try a larger size hook or needles.

STITCH EXPLANATION:

RT (right twist): K2tog and leave on left needle, then with right needle, go between the 2 sts and k the first st again.

LT (left twist): K 2nd st on left needle through the back loop and leave on left needle. Then k both the first and 2nd sts together through the back loop.

1/1 RPC (2 st right purl cable): Sl 1 st to cable needle, hold in back, k1, p1 from cable needle.

1/1 LPC (2 st left purl cable): Sl 1 st to cable needle, hold in front, p1, k1 from cable needle.

2/1 RPC (3 st right purl cable): Sl 1 st to cable needle, hold in back, k2, purl 1 from cable needle.

2/1 LPC (3 st left purl cable): Sl 2 sts to cable needle, hold in front, p1, k2 from cable needle.

2/2 RC (2 over 2 right cross): Sl 2 sts to cable needle, hold in back, k2, then k2 from cable needle.

2/2 LC (2 over 2 left cross): Sl 2 sts to cable needle, hold in front, k2, then k2 from cable needle.

3/3 RC (3 over 3 right cross): Sl 3 sts to cable needle, hold in back, k3, then k3 from cable needle.

3/3 LC (3 over 3 left cross): Sl 3 sts to cable needle, hold in front, k3, then k3 from cable needle.

Duplicate st: Thread a large-eyed blunt needle with yarn. Inserting needle from WS of piece, bring through to RS at the base of the stitch to be duplicated. Insert needle from right to left behind both sides of the stitch above the one being duplicated. Complete the stitch by returning the needle to the WS at the same point where you began.

NOTES:

1. Number of rows and sts in each block varies slightly to accommodate pattern sts.
2. When working from charts, read RS rows from right to left, WS rows from left to right.
3. Circular needle is used to accommodate large number of sts in borders. Blocks can be worked on straight needles or back and forth on circular needle (as when working on straight needles).
4. For blocks with 2 or more colors, carry colors not in use across WS. Pick up new color from under old color to twist yarns and prevent holes.

BLOCK 1 (make 4)

With A, cast on 42 sts.

Row 1 (WS): K3, p 6, k1, p1, k8, p4, k8, p1, k1, p6, k3.

Row 2: P3, k6, p1, sl 1 with yarn in back, p7, 2/1 RPC, 2/1 LPC, p7, sl 1, p1, k6, p3.

Row 3 and all WS rows: K the knits, p the purls, p the sl sts.

Row 4: P3, 3/3 RC, p1, sl 1, p6, 2/1 RPC, k2, 2/1 LPC, p6, sl 1, p1, 3/3 RC, p3.

Row 6: P3, k6, p1, sl 1, p5, 2/1 RPC, p1, RT, p1, 2/1 LPC, p5, sl 1, p1, k6, p3.

Row 8: P3, k6, p1, sl 1, p4, 2/1 RPC, p1, 1/1 RPC, 1/1 LPC, p1, 2/1 LPC, p4, sl 1, p1, k6, p3.

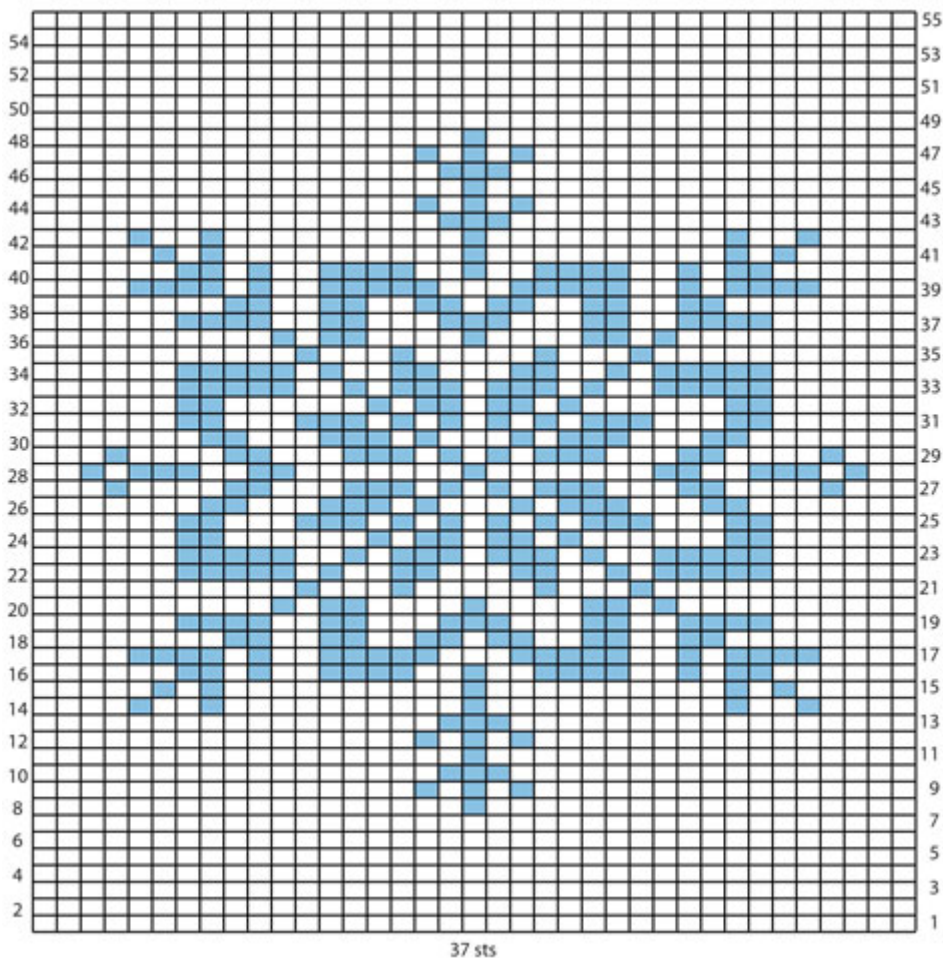
Row 10: P3, 3/3 LC, p1, sl 1, p3, 2/1 RPC, (p2, k1) twice, p2, 2/1 LPC, p3, sl 1, p1, 3/3 LC, p3.

Row 12: P3, k6, p1, sl 1, p2, 2/1 RPC, p3, LT, RT, p3, 2/1 LPC, p2, sl 1, p1, k6, p3.
Row 14: P3, k6, p1, sl 1, p2, k2, p5, RT, p5, k2, p2, sl 1, p1, k6, p3.
Row 16: P3, 3/3 RC, p1, sl 1, p2, 2/1 LPC, p3, RT, LT, p3, 2/1 RPC, p2 sl 1, p1, 3/3 RC, p3.
Row 18: P3, k6, p1, sl 1, p3, 2/1 LPC, (p2, k1) twice, p2, 2/1 RPC, p3, sl 1, p1, k6, p3.
Row 20: P3, k6, p1, sl 1, p4, 2/1 LPC, p1, 1/1 LPC, 1/1 RPC, p1, 2/1 RPC, p4, sl 1, p1, k6, p3.
Row 22: P3, 3/3 LC, p1, sl 1, p5, 2/1 LPC, p1, RT, p1, 2/1 RPC, p5, sl 1, p1, 3/3 LC, p3.
Row 24: P3, k6, p1, sl 1, p6, 2/1 LPC, k2, 2/1 RPC, p6, sl 1, p1, k6, p3.
Row 26: P3, k6, p1, sl 1, p7, 2/1 LPC, 2/1 RPC, p7, sl 1, p1, k6, p3.
Row 28: P3, 3/3 RC, p1, sl 1, p8, 2/2 RC, p8, sl 1, p1, 3/3 RC, p3.
Rows 29–56: Rep established pattern, as follows: Work center 24 sts as for Rows 1-28. Work first and last 9 sts as for Rows 5-28, then as for Rows 5-8. At end of Row 56, bind off.

BLOCK 2 (make 2 with B, 1 with C, 1 with D)

Cast on 36 sts.
Row 1 and all WS rows: Purl.
Row 2: K2, *LT, k4, RT; rep from * to last 2 sts, end k2.
Row 4: K3, *LT, k2, RT, k2; rep from * end last rep k3.
Row 6: K4, *LT, RT, k4; rep from * to end.
Row 8: K5, *LT, k6; rep from * end last rep k5.
Row 10: K4, *RT, LT, k4; rep from * to end.
Row 12: K3, *RT, k2, LT, k2; rep from * end last rep k3.
Row 14: K2, *RT, k4, LT; rep from * to last 2 sts, end k2.
Row 16: K1, RT, *k6, LT; rep from * end k1.
 Rep Rows 1-16 twice more, then rep Rows 1-8 once. Bind off.

BLOCK 3



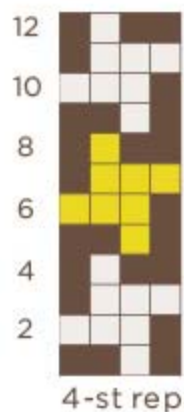
BLOCK 3 (make 2 with E, 1 with C)

Note: Snowflakes are worked in duplicate st after blocks have been knitted.
 Cast on 37 sts. Work in St st (k on RS, p on WS) for 54 rows. Bind off.
 With A, and following Block 3 chart, work duplicate st snowflake.

COLOR KEY



BLOCK 4



BLOCK 4 (make 3)

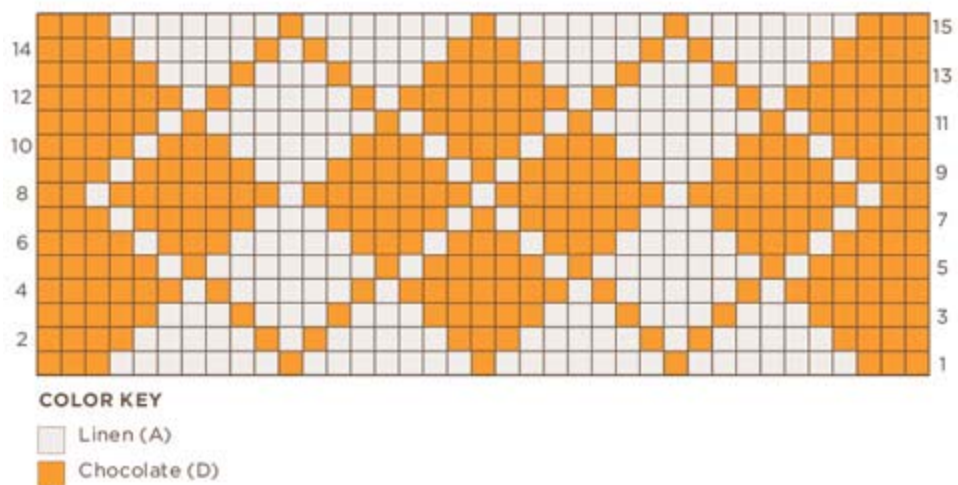
With E, cast on 36 sts. Beg with a k row, work in St st for 4 rows.

Next Row (RS): Join A. Knit, working 4-st rep of Row 1 of Block 4 chart across row for a total of 9 times.

Join B. Continue to work in St st, following chart, alternating B and A, until piece measures about 9 in. (23 cm) from beg; end with a WS row.

With E, work 4 rows in St st. Bind off.

BLOCK 5



BLOCK 5 (make 3)

With D, cast 37 sts. Beg with a k row, work in St st for 10 rows.

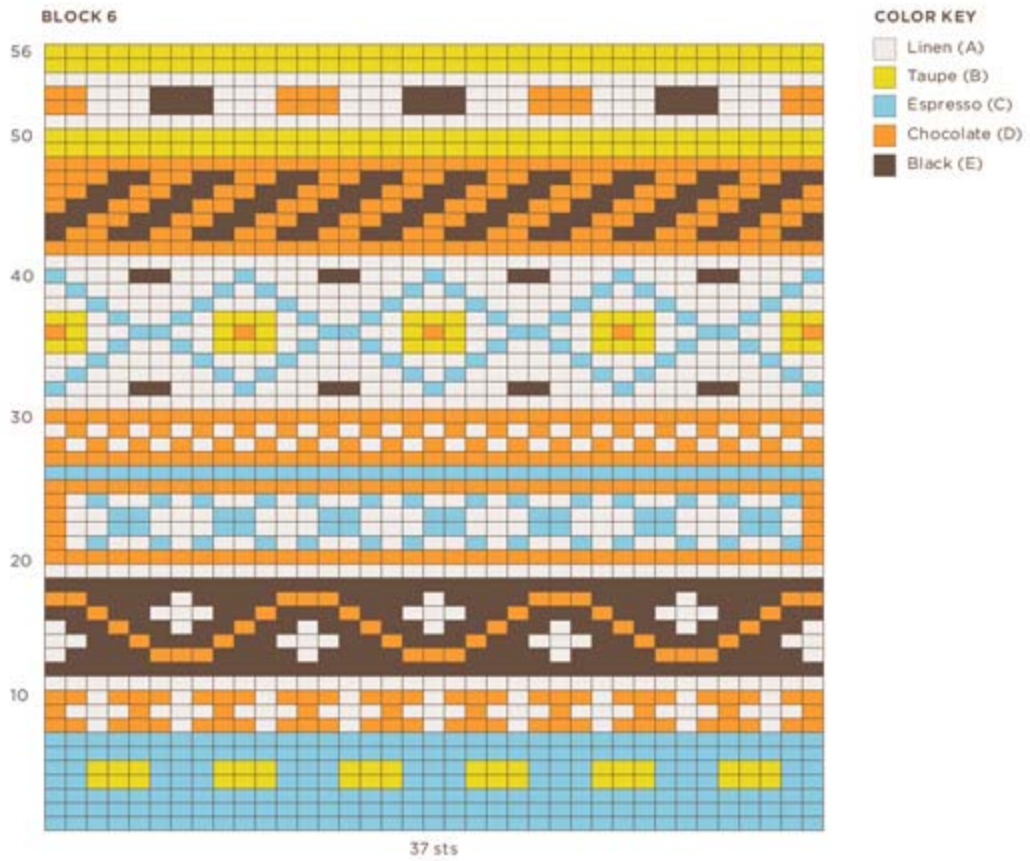
Continue in St st and work Rows 1-15 of Block 5 chart.

Cut A. With D, work 7 rows in St st.

Continue in St st and work Rows 1-15 of Block 5 chart.

Cut A. With D work 9 rows in St st.

Bind off.



BLOCK 6 (make 3)

With C, cast on 37 sts.
Work in St st until 56 rows of Block 6 chart have been completed.
Bind off.

FINISHING

Following Assembly Diagram, sew blocks together.

ASSEMBLY DIAGRAM

Block 1	Block 4	Block 2 (B)	Block 5
Block 5	Block 2 (C)	Block 6	Block 3 (E)
Block 3 (F)	Block 6	Block 1	Block 4
Block 2	Block 5	Block 3 (C)	Block 1
Block 4	Block 1	Block 2 (D)	Block 6

Borders

Note: Circular needle is used to accommodate large number of sts. Work back and forth on circular needle as if working on straight needles.

With RS facing, circular needle and C, pick up and k 136 sts along one short end of Afghan.

Next Row: K into front and then back of first st (increase made), k to end.

Rep last row 4 times.

Change to B and rep last row 5 times – 146 sts. Bind off.

Rep across opposite short end of Afghan.

Side Borders With RS facing, circular needle and C, pick up and k 216 sts along one side of Afghan. Work as for previous border – 226 sts.

Rep along opposite side of Afghan. Seam borders at corners.

Weave in ends.

ABBREVIATIONS / REFERENCES

Click for explanation and illustration

<u>beg = begin(s)(ing)</u>	<u>k = knit</u>
<u>p = purl</u>	<u>rep = repeat(s)(ing)</u>
<u>RS = right side</u>	<u>sl = slip</u>
<u>St st = Stockinette stitch</u>	<u>st(s) = stitch(es)</u>
<u>WS = wrong side</u>	

Learn to knit instructions: <http://learnToKnit.LionBrand.com>

Every effort has been made to have the knitting and crochet instructions accurate and complete. We cannot be responsible for variance of individual knitters and crocheters, human errors, or typographical mistakes.

**Vanna's Choice*[®] (Article #860) is a 4-ply worsted-weight 100% acrylic yarn. • Solids in 3.5 oz/100g (170 yd/156 m) balls • Prints in 3 oz/85 g (145 yd/133 m) balls 100% acrylic



We want your project to be a success! If you need help with this or any other Lion Brand pattern, e-mail support is available 7 days per week. Just click [here](#) to explain your problem and someone will help you!

For thousands of free patterns, visit our website www.LionBrand.com

To order visit our website www.lionbrand.com or call: (800) 258-YARN (9276) any time!

Copyright ©1998-2009 Lion Brand Yarn Company, all rights reserved. No pattern or other material may be reproduced -- mechanically, electronically, or by any other means, including photocopying -- without written permission of Lion Brand Yarn Company.