



Free Knitting Pattern
Lion Brand Wool-Ease Thick & Quick
Diane Scarf

Pattern Number: 80924AD



Free Knitting Pattern from Lion Brand Yarn

Lion Brand Wool-Ease Thick & Quick

Diane Scarf

Pattern Number: 80924AD

SKILL LEVEL: Easy +

SIZE: One Size

About 9 1/2 x 72 in. (24 cm x 183 cm)

CORRECTIONS: None as of Jun 4, 2010. To check for later updates, click [here](#).

MATERIALS

- 640-099 [Lion Brand Wool-Ease Thick & Quick Yarn: Fisherman](#)
3 Balls
- [Lion Brand Knitting Needles - Size 13 \[9 mm\]](#)
- [Lion Brand Cable Needles \(Set of 2\)](#)
- [Large-Eye Blunt Needles \(Set of 6\)](#)

GAUGE:

11 1/2 sts + 15 rows = 4 in. (10 cm) over Cable Pattern. BE SURE TO CHECK YOUR GAUGE. When you match the gauge in a pattern, your project will be the size specified in the pattern and the materials specified in the pattern will be sufficient. If it takes you less stitches and rows to make a 4 in. [10 cm] square, try using a smaller size hook or needles; if more stitches and rows, try a larger size hook or needles.

STITCH EXPLANATION:

2/1 PRC (2 over 1 purl right cross) Slip 1 st to cable needle and hold in back, k2, then p1 from cable needle.

2/1 PLC (2 over 1 purl left cross) Slip 2 sts to cable needle and hold in front, p1, then k2 from cable needle.

PATTERN STITCHES

CABLE PATTERN (worked over 27 sts)

Row 1: Sl 2 wyib, p1, k1, p1, k2, p1, k11, p1, k2, p1, k1, p1, sl 2 wyib.

Row 2: P2, k1, p1, k1, p2, k13, p2, k1, p1, k1, p2.

Row 3: Sl 2 wyib, p1, k2, 2/1 PLC, p1, k9, p1, 2/1 PRC, k2, p1, sl 2 wyib.

Row 4: P2, (k1, p2) twice, k11, p2, (k1, p2) twice.

Row 5: Sl 2 wyib, p1, k3, 2/1 PLC, p1, k7, p1, 2/1 PRC, k3, p1, sl 2 wyib.

Row 6: P2, k1, p3, k1, p2, k9, p2, k1, p3, k1, p2.

Row 7: Sl 2 wyib, p1, k4, 2/1 PLC, p1, k5, p1, 2/1 PRC, k4, p1, sl 2 wyib.

Row 8: P2, k1, p4, k1, p2, k1, p5, k1, p2, k1, p4, k1, p2.

Row 9: Sl 2 wyib, p1, k5, 2/1 PLC, p1, k3, p1, 2/1 PRC, k5, p1, sl 2 wyib.

Row 10: P2, k1, p5, k1, p2, k1, p3, k1, p2, k1, p5, k1, p2.

Row 11: Sl 2 wyib, p1, k6, 2/1 PLC, p1, k1, p1, 2/1 PRC, k6, p1, sl 2 wyib.

Row 12: P2, k1, p6, k1, p2, k1, p1, k1, p2, k1, p6, k1, p2.

Row 13: Sl 2 wyib, p1, k7, 2/1 PLC, p1, 2/1 PRC, k7, p1, sl 2 wyib.

Row 14: P2, k1, p7, (k1, p2) twice, k1, p7, k1, p2.

Row 15: Sl 2 wyib, p1, k8, p5, k8, p1, sl 2 wyib.

Row 16: P2, k1, p8, k5, p8, k1, p2.

Row 17: Sl 2 wyib, p1, k7, (p1, k2) twice, p1, k7, p1, sl 2 wyib.

Row 18: P2, k9, p2, k1, p2, k9, p2.

Row 19: Sl 2 wyib, p1, k6, 2/1 PRC, p1, k1, p1, 2/1 PLC, k6, p1, sl 2 wyib.

Row 20: P2, k8, (p1, k2) twice, p1, k8, p2.

Row 21: Sl 2 wyib, p1, k5, 2/1 PRC, p2, k1, p2, 2/1 PLC, k5, p1, sl 2 wyib.

Row 22: P2, k7, p2, k2, p1, k2, p2, k7, p2.

Row 23: Sl 2 wyib, p1, k4, 2/1 PRC, p3, k1, p3, 2/1 PLC, k4, p1, sl 2 wyib.

Row 24: P2, k1, p4, k1, (p1, k4) twice, p1, k1, p4, k1, p2.

Row 25: Sl 2 wyib, p1, k3, 2/1 PRC, p4, k1, p4, 2/1 PLC, k3, p1, sl 2 wyib.

Row 26: P2, k1, p3, k1, (p1, k5) twice, p1, k1, p3, k1, p2.

Row 27: Sl 2 wyib, p1, k2, 2/1 PRC, p11, 2/1 PLC, k2, p1, sl 2 wyib.

Row 28: P2, k1, p2, k1, p1, k13, p1, k1, p2, k1, p2.

Row 29: Sl 2 wyib, p1, k1, 2/1 PRC, p13, 2/1 PLC, k1, p1, sl 2 wyib.

Row 30: P2, k1, p1, k1, p2, k13, p2, k1, p1, k1, p2.

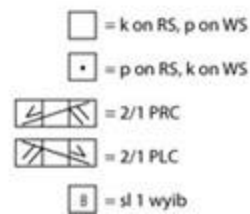
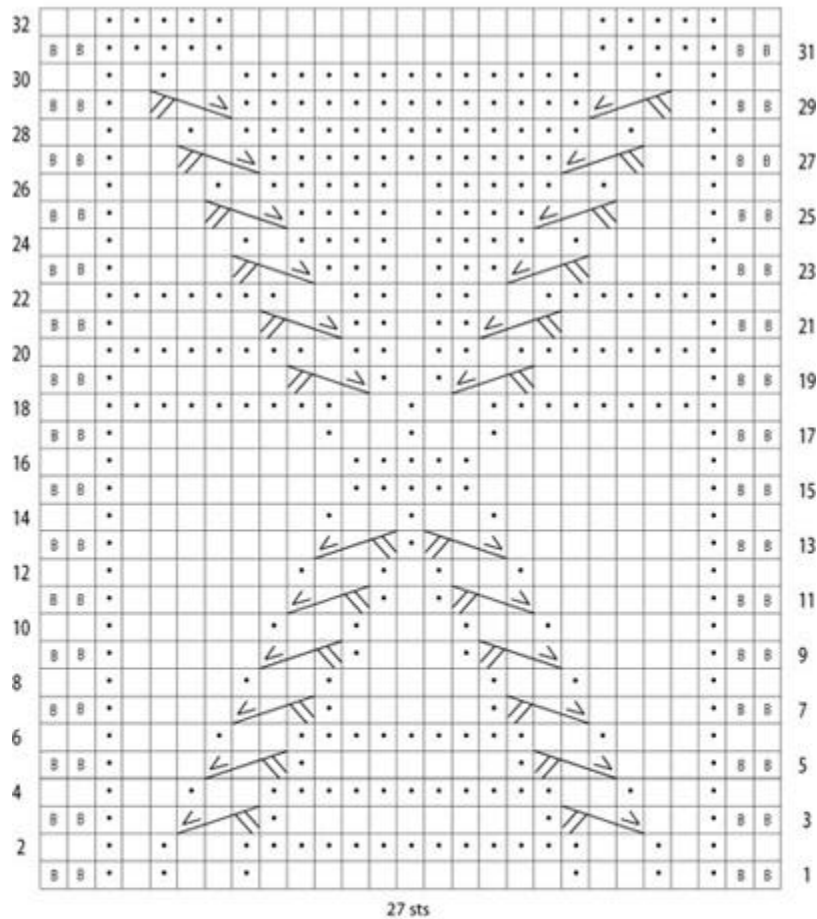
Row 31: Sl 2 wyib, p5, k13, p5, sl 2 wyib.

Row 32: P2, k5, p13, k5, p2.

Rep Rows 1-32 for Cable Pattern.

NOTES:

With yarn in back (wyib) refers to the side of the work facing away from you, as you work the row.



SCARF

Cast on 27 sts.

Row 1: Sl 2 wyib, p1, k21, p1, sl 2 wyib.

Row 2: P2, k23, p2.

Rows 3-6: Rep Rows 1 and 2.

Beginning with Row 1, work Cable Pattern from chart or written instructions.

Work to Row 32 of Cable Pattern, then rep Rows 1-32 seven more times.

Next Row: Sl 2 wyib, p1, k21, p1, sl 2 wyib.

Next Row: P2, k23, p2.

Rep last 2 rows twice more.

Bind off.

FINISHING

Weave in ends.

ABBREVIATIONS / REFERENCES	
Click for explanation and illustration	
<u>k = knit</u>	<u>rep = repeat(s)(ing)</u>
<u>sl = slip</u>	<u>st(s) = stitch(es)</u>
<u>wyib = with yarn in back</u>	

Learn to knit instructions: <http://learnToKnit.LionBrand.com>

Every effort has been made to have the knitting and crochet instructions accurate and complete. We cannot be responsible for variance of individual knitters and crocheters, human errors, or typographical mistakes.

We want your project to be a success! If you need help with this or any other Lion Brand pattern, e-mail support is available 7 days per week. Just click [here](#) to explain your problem and someone will help you!

For thousands of free patterns, visit our website www.LionBrand.com

To order visit our website www.lionbrand.com or call: (800) 258-YARN (9276) any time!

Copyright © 1998-2009 Lion Brand Yarn Company, all rights reserved. No pattern or other material may be reproduced -- mechanically, electronically, or by any other means, including photocopying -- without written permission of Lion Brand Yarn Company.