



**Free Knitting Pattern**  
**Lion Brand® Fishermen's Wool®**  
**Inishturk Sweater and Tam**  
Pattern Number: 90047AD



This sweater and hat set feature intricate aran cables for a classic look.

# Free Knitting Pattern from Lion Brand Yarn

## Lion Brand® Fishermen's Wool®

### Inishturk Sweater and Tam

Pattern Number: 90047AD

**SKILL LEVEL:** Advanced Intermediate

**SIZE:** Small, Medium, Large, 1X, 2X

**Finished Chest** 40 (44, 48, 52, 56) in. (101.5 (112, 122, 132, 142) cm)

**Finished Length** 24 1/2 (25, 25, 25 1/2, 25 1/2) in. (62 (63.5, 63.5, 65, 65) cm)

**Hat** One size

**Finished Circumference (at band)** 21 in. (53.5 cm)

**Note:** Pattern is written for smallest size with changes for larger sizes in parentheses. When only one number is given, it applies to all sizes. To follow pattern more easily, circle all numbers pertaining to your size before beginning.

**CORRECTIONS:** (applied Feb 19, 2013)

#### HAT

...

Work ~~25~~ **26** more rnds in patterns as established.

Hat chart for Shape Crown corrected.

#### MATERIALS

- 150-123 Lion Brand Fishermen's Wool Yarn: Oatmeal  
3 (3, 4, 4, 5) Balls
- Lion Brand Knitting Needles - Size 7 [4.5 mm]
- Lion Brand Knitting Needles- Size 8 [5 mm]
- Lion Brand Double-Pointed Needles - Size 9 (Hat only)
- Lion Brand Cable Needles (Set of 2)
- Lion Brand Split Ring Stitch Markers
- Lion Brand Stitch Holders
- Pom pom Maker
- Lion Brand Large-Eye Blunt Needles (Set of 6)
- Additional Materials  
Circular knitting needle size 6 (4.25 mm), 16 in. (40 cm) long (Hat only)  
Circular knitting needle size 7 (4.5 mm), 16 in. (40 cm) long  
Circular knitting needle size 9 (5.5 mm), 16 in. (40 cm) long (Hat only)

#### GAUGE:

**Sweater** 16 sts and 21 rows = 4 in. (10 cm) with size 8 (5 mm) needles over Double Seed st.  
**Hat** 16 sts and 28 rows = 4 in. with size 9 (5.5 mm) needles over St st (k on RS, p on WS).

BE SURE TO CHECK YOUR GAUGE. When you match the gauge in a pattern, your project will be the size specified in the pattern and the materials specified in the

pattern will be sufficient. If it takes you fewer stitches and rows to make a 4 in. [10 cm] square, try using a smaller size hook or needles; if more stitches and rows, try a larger size hook or needles.

#### NOTES:

**sk2p** Slip 1 st to right needle, k2tog, pass sl st over—2 sts decreased.

**sk3p** Slip 1 st to right needle, k3tog, pass sl st over—3 sts decreased.

**Kfb (inc 1 st)** Knit next st without removing it from left needle, then k through back of same st.

**M1 (make 1)** An increase worked by lifting horizontal thread lying between needles and placing it onto left needle. Knit this new stitch through the back loop.

**ssk (slip, slip, knit)**Sl next 2 sts as if to knit, one at a time, to right needle; insert left needle into fronts of these 2 sts and knit them tog.

#### PATTERN STITCHES

##### Double Seed Stitch (over an even number of sts)

**Row 1 (RS):** \*K1, p1; rep from \* to end.

**Row 2:** K the knit sts and p the purl sts.

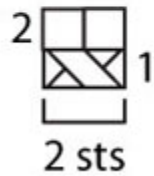
**Row 3:** \*P1, k1; rep from \* to end.

**Row 4:** K the knit sts and p the purl sts.

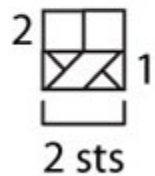
Rep Rows 1–4 for Double Seed st.

- k on RS, p on WS
- p on RS, k on WS
- k2tog
- ssk: Sl next 2 sts as if to knit, one at a time, to right needle; insert left needle into fronts of these 2 sts and knit them together
- kfb: Knit next st without removing it from left needle, then k through back of same st
- sk3p: Sl 1 st to right needle, k3tog, pass sl st over
- sk2p: Sl 1 st to right needle, k2tog, pass sl st over
- Sl 1 st onto cable needle and hold in back, k1, then k1 from cable needle (1 over 1 Right Cross)
- Sl 1 st onto cable needle and hold in front, k1, then k1 from cable needle (1 over 1 Left Cross)
- Sl 1 st onto cable needle and hold in back, k1, then p1 from cable needle (1 over 1 Right Purl Cross)
- Sl 1 st onto cable needle and hold in front, p1, then k1 from cable needle (1 over 1 Left Purl Cross)
- Sl 1 st onto cable needle and hold in back, k2, then p1 from cable needle (2 over 1 Right Purl Cross)
- Sl 2 sts onto cable needle and hold in front, p1, then k2 from cable needle (2 over 1 Left Purl Cross)
- Sl 2 sts onto cable needle and hold in back, k2, then k2 from cable needle (2 over 2 Right Cross)
- Sl 2 sts onto cable needle and hold in front, k2, then k2 from cable needle (2 over 2 Left Cross)
- Sl 2 sts onto cable needle and hold in back, k2, then p2 from cable needle (2 over 2 Right Purl Cross)
- Sl 2 sts onto cable needle and hold in front, p2, then k2 from cable needle (2 over 2 Left Purl Cross)

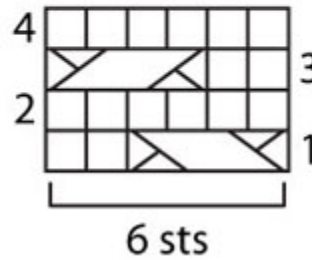
Small  
Cable A



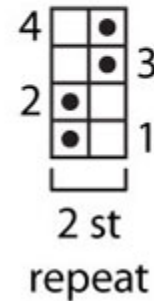
Small  
Cable B



Cable C



Double  
Seed  
Stitch



**Small Cable A (over 2 sts)**

**Row 1:** Sl 1 st to cable needle (cn) and hold in front, k1, then k1 from cn.

**Row 2:** Purl.

Rep Rows 1 and 2 for Small Cable A.

**Small Cable B (over 2 sts)**

**Row 1:** Sl 1 st to cn and hold in back, k1, then k1 from cn.

**Row 2:** Purl.

Rep Rows 1 and 2 for Small Cable B.

**Cable C (over 6 sts)**

**Row 1:** Sl 2 sts to cn and hold in front, k2, then k2 from cn, k2.

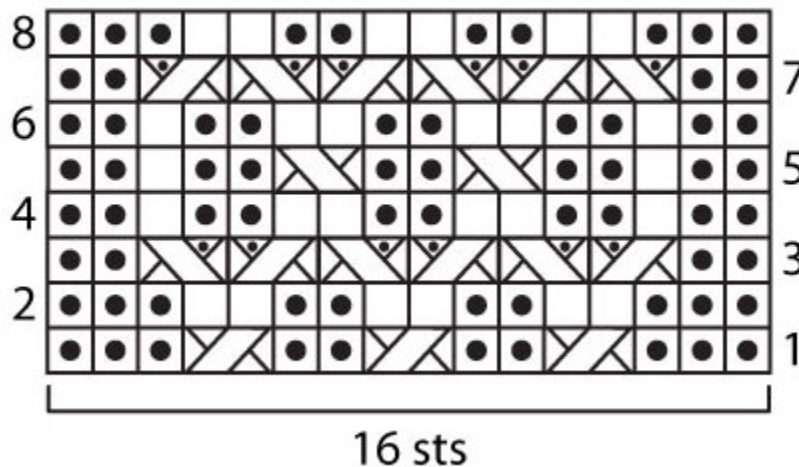
**Row 2:** Purl.

**Row 3:** K2, sl 2 sts to cn and hold in back, k2, then k2 from cn.

**Row 4:** Purl.

Rep Rows 1-4 for Cable C.

Panel A



**Panel A (over 16 sts)**

**Row 1 (RS):** P3, (sl 1 st to cn and hold in back, k1, then k1 from cn, p2) 3 times, p1.

**Row 2 and all WS rows:** K the knit sts and p the purl sts.

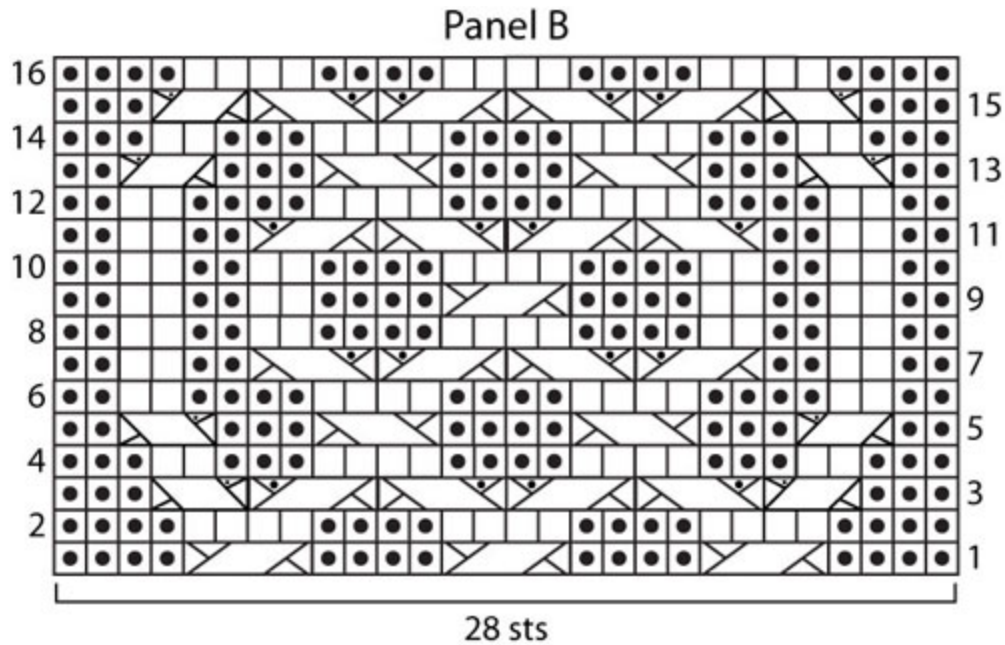
**Row 3:** P2, (sl 1 st to cn and hold in back, k1, then p1 from cn; sl 1 st to cn and hold in front, p1, then k1 from cn) 3 times, p2.

**Row 5:** P2, k1, (p2, sl 1 st to cn and hold in front, k1, then k1 from cn) twice, p2, k1, p2.

**Row 7:** P2, (sl 1 st to cn and hold in front, p1, then k1 from cn; sl 1 st to cn and hold in back, k1, then p1 from cn) 3 times, p2.

**Row 8:** K the knit sts and p the purl sts.

Rep Rows 1–8 for Panel A.



**Panel B (over 28 sts)**

**Row 1 (RS):** P4, (sl 2 sts to cn and hold in back, k2, then k2 from cn, p4) 3 times.

**Row 2 and all WS rows:** K the knit sts and p the purl sts.

**Row 3:** P3, sl 1 st to cn and hold in back, k2, then p1 from cn, (sl 2 sts to cn and hold in front, p2, then k2 from cn; sl 2 sts to cn and hold in back, k2, then p2 from cn) twice, sl 2 sts to cn and hold in front, p1, then k2 from cn, p3.

**Row 5:** P2, sl 1 st to cn and hold in back, k2, then p1 from cn; p3, sl 2 sts to cn and hold in front, k2, then k2 from cn; p4, sl 2 sts to cn and hold in front, k2, then k2 from cn; p3, sl 2 sts to cn and hold in front, p1, then k2 from cn; p2.

**Row 7:** P2, k2, p2, (sl 2 sts to cn and hold in back, k2, then p2 from cn; sl 2 sts to cn and hold in front, p2, then k2 from cn) twice, p2, k2, p2.

**Row 9:** (P2, k2) twice, p4, sl 2 sts to cn and hold in back, k2, then k2 from cn, p4, (k2, p2) twice.

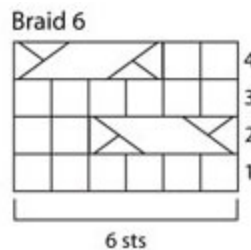
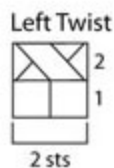
**Row 11:** P2, k2, p2, (sl 2 sts to cn and hold in front, p2, then k2 from cn; sl 2 sts to cn and hold in back, k2, then p2 from cn) twice, p2, k2, p2.

**Row 13:** P2, sl 2 sts to cn and hold in front, p1, then k2 from cn; p3, sl 2 sts to cn and hold in front, k2, then k2 from cn; p4, sl 2 sts to cn and hold in front, k2, then k2 from cn; p3, sl 1 st to cn and hold in back, k2, p1 from cn, p2.

**Row 15:** P3, sl 2 sts to cn and hold in front, p1, then k2 from cn, (sl 2 sts to cn and hold in back, k2, then p2 from cn, sl 2 sts to cn and hold in front, p2, then k2 from cn) twice, sl 1 st to cn and hold in back, k2, then p1 from cn, p3.

**Row 16:** K the knit sts and p the purl sts.

Rep Rows 1–16 for Panel B.



**Left Twist (worked in the rnd - over 2 sts)**

**Rnd 1:** K2.

**Rnd 2:** Sl 1 st to cn and hold in front, k1, k1 from cn.

Rep Rnds 1 and 2 for LT.

**Braid 6 (worked in the rnd - over 6 sts)**

**Rnds 1 and 3:** K6.

**Rnd 2:** Sl 2 sts to cn and hold in front, k2, k2 from cn, k2.

**Rnd 4:** K2, sl 2 sts to cn and hold in back, k2, k2 from cn.

Rep Rnds 1-4 for B6.

**SWEATER**

**BACK**

With size 7 (4.5 mm) needles, cast on 98 (106, 114, 122, 130) sts. Work in K2, p2 Rib for 3 in. (7.5 cm), inc 22 sts evenly spaced across last row, end with a WS row—120 (128, 136, 144, 152) sts at end of row.

Change to size 8 (5 mm) needles.

**Next (Pattern Set Up) Row (RS):** K1 (selvage st), (k1, p1) 2 (4, 6, 8, 10) times, k1, p2, k6, p2, k1, p3, (k2, p2) twice, k2, p3, k1, p2, k6, p2, k2, (p4, k4) 3 times, p4, k2, p2, k6, p2, k1, p3, (k2, p2) twice, k2, p3, k1, p2, k6, p2, k1, (p1, k1) 2 (4, 6, 8, 10) times, k1 (selvage st).

**Next Row and all WS Rows:** K the knit sts and p the purl sts.

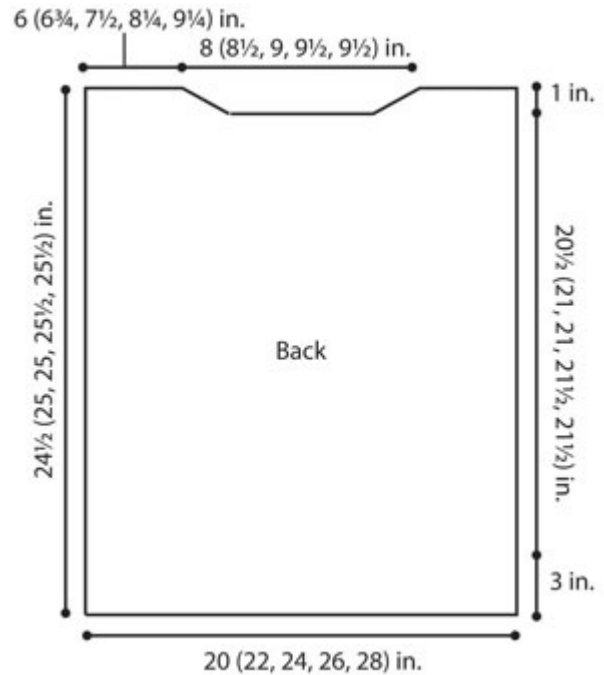
**Next Row (RS):** K1, work Double Seed st over 4 (8, 12, 16, 20) sts, k1, p2, work Cable C over 6 sts, p2, k1, work Panel A over 16 sts, k1, p2, work Cable C over 6 sts, p2, work Small Cable B over 2 sts, work Panel B over 28 sts, work Small Cable A over 2 sts, p2, work Cable C over 6 sts, p2, k1, work Panel A over 16 sts, k1, p2, work Cable C over 6 sts, p2, k1, work Double Seed st over 4 (8, 12, 16, 20) sts, k1.

Work in patterns as established until piece measures 20 1/2 (21, 21, 21 1/2, 21 1/2) in. (52 (54, 54, 54.5, 54.5) cm) above rib, end with a WS row.

**Shape Neck**

**Next Row (RS):** Continuing in patterns as established (see note), work first 39 (41, 43, 45, 49) sts, place center 42 (46, 50, 54, 54) sts on a holder, join a 2nd ball of yarn and work to end.

Working both sides at the same time with separate balls of yarn, dec 1 st at each neck edge (by a working k2tog 1 st from neck edge) every other row 3 times – 36 (38, 40, 42, 46) sts remain for each shoulder. Bind off.

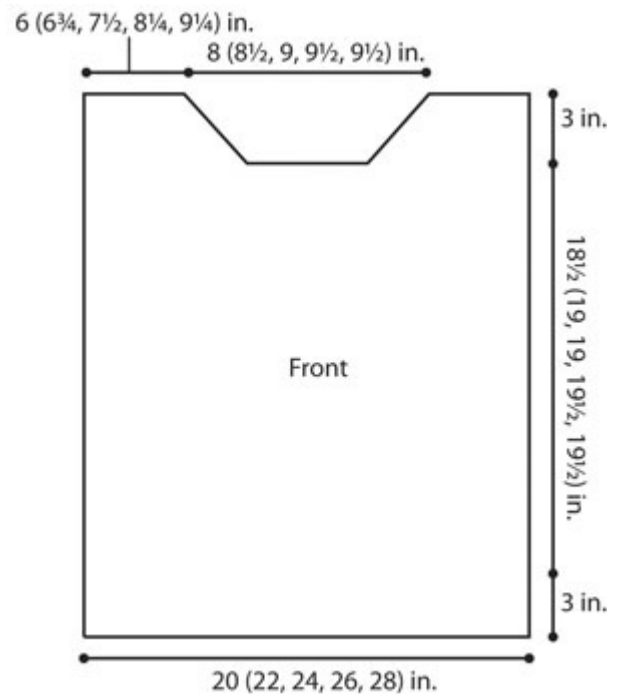


## FRONT

Work as for Back until piece measures 18 1/2 (19, 19, 19 1/2, 19 1/2) in. (48 (48.5, 48.5, 49.5, 49.5) cm) above rib, end with a WS row.

### Shape Neck

**Next Row (RS):** Continue in patterns as established (see note), work first 43 (45, 47, 49, 53) sts, place center 34 (38, 42, 46, 46) sts on a holder, join a 2nd ball of yarn and work to end. Working both sides at the same time with separate balls of yarn, dec 1 st (by a working k2tog 1 st from neck edge) at each neck edge every other row 7 times – 36 (38, 40, 42, 46) sts remain for each shoulder. Continue even in patterns as established until piece measures same length as Back. Bind off.



## SLEEVES

With size 7 (4.5 mm) needles, cast on 46 (50, 54, 58, 58) sts. Work in K2, p2 Rib for 2 in. (5 cm), end with a WS row.

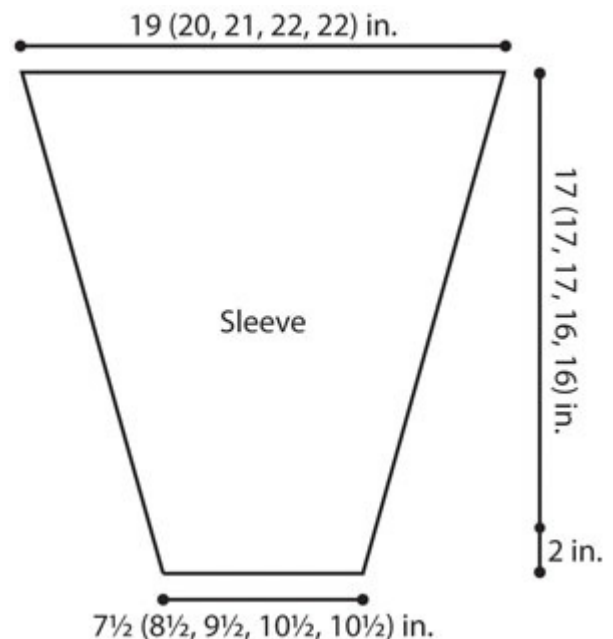
Change to size 8 (5 mm) needles.

**Next (Pattern Set Up) Row (RS):** K1 (selvage st), (k1, p1) 1 (2, 3, 4, 4) time(s), k1, p2, k6, p2, k1, p3, (k2, p2) twice, k2, p3, k1, p2, k6, p2, k1, (p1, k1), 1 (2, 3, 4, 4) time(s), k1 (selvage st).

**Next Row and all WS rows:** K the knit sts and p the purl sts.

**Next Row (RS):** K1, work Double Seed st over 2 (4, 6, 8, 8) sts, k1, p2, work Cable C over 6 sts, p2, k1, work Panel A over 16 sts, k1, p2, work Cable C over 6 sts, p2, k1, work Double Seed st over 2 (4, 6, 8, 8) sts, k1. Work in patterns as established, inc 1 st each side (by working M1 inside selvage sts) every 3rd row 8 times, then every 4th row 15 times, working new sts into Double Seed st pattern as established – 92 (96, 100, 104, 104) sts.

Work even until Sleeve measures 17 (17, 17, 16, 16) in. (43 (43, 43, 40.5, 40.5) cm) above rib. Bind off.



## FINISHING

Sew shoulder seams.

### Neckband

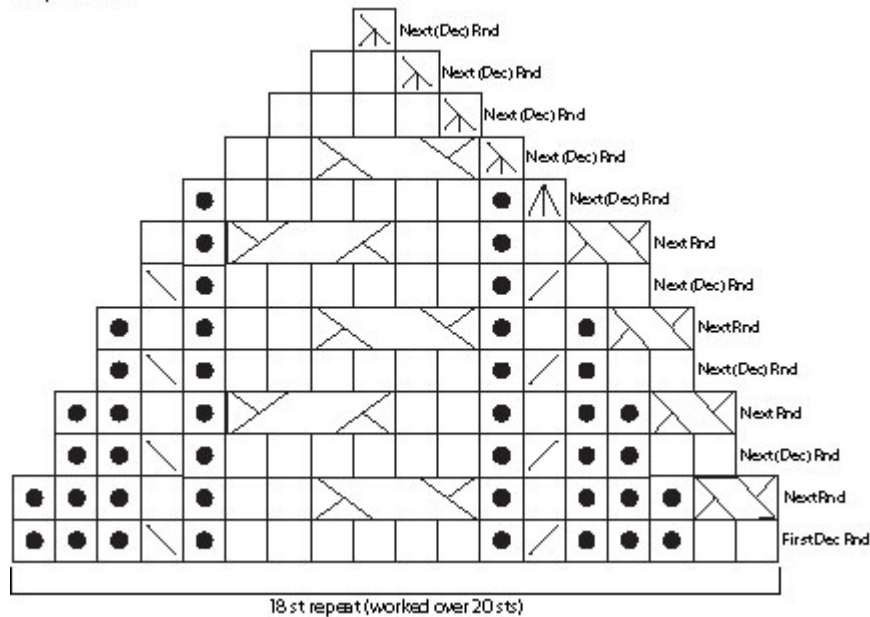
With RS facing, size 7 (4.5 mm) circular needle, and beg at right back neck, pick up and k 3 sts, work across 42 (46, 50, 54, 54) sts from back neck holder, pick up and k 3 sts from left back neck, 7 sts around left front neck, work across 34 (38, 42, 46, 46) sts from front neck holder, 7 sts around right front neck – 96 (104, 112, 120, 120) sts. Join, being careful not to twist sts. Place marker for beg of rnd.

Rnd 1: Working in K2, p2 Rib, dec 10 sts evenly spaced across center Back and 10 sts evenly spaced across center Front sts, total of 20 sts dec – 76 (84, 92, 100, 100) sts remaining at end of rnd.

Work even in rnds of K2, p2 Rib for 2 in. (5 cm). Bind off.

Place markers on Front and Back 9 (9 1/2, 9 3/4, 10 1/4, 10 1/4) in. (23 (24, 25, 26, 26) cm) down from shoulder seams. Sew Sleeves between markers. Sew side and Sleeve seams. Weave in ends.

## ShapeCrown



### HAT

With size 6 (4.25 mm) circular needle, cast on 92 sts. Join, being careful not to twist sts. Place marker for beg of rnd.

**Rnds 1–9:** Work in K2, p2 Rib.

**Rnd 10:** \*K2, M1; rep from \* to end – 138 sts at end of rnd. Change to size 9 (5.5 mm) circular needle.

**Rnd 11 (Pattern Set Up):** Work Rnd 1 of patterns as follows, LT, p4, k1, p1, B6, kfb, p4, \*LT, p4, k1, p1, B6, p1, k1, p4; rep from \* 2 more times; LT, p4, kfb, B6, p1, k1, p4; \*LT, p4, k1, p1, B6, p1, k1, p4; rep from \* 1 more time – 140 sts at end of rnd.

**Rnd 12:** Work Rnd 2 of patterns as follows, \*LT, p4, k1, p1, B6, p1, k1, p4; rep from \* 6 more times. Work 26 more rnds in patterns as established.

### Shape Crown

**Note:** Change to double-pointed needles when sts have been sufficiently decreased.

**Next (Dec) Rnd:** \*LT, p3, k2tog, p1, B6, p1, ssk, p3; rep from \* around – 126 sts remaining at end of rnd.

**Next Rnd:** Work even in patterns as established.

**Next (Dec) Rnd:** \*LT, p2, k2tog, p1, B6, p1, ssk, p2; rep from \* around – 112 sts.

**Next Rnd:** Work even in patterns as established.

**Next (Dec) Rnd:** \*LT, p1, k2tog, p1, B6, p1, ssk, p1; rep from \* around – 98 sts.

**Next Rnd:** Work even in patterns as established.

**Next (Dec) Rnd:** \*LT, k2tog, p1, B6, p1, ssk; rep from \* around – 84 sts.

**Next Rnd:** Work even in patterns as established.

**Note:** For every following dec rnd, the first dec on the rnd uses the last st of the previous rnd; therefore, use last st of previous rnd as first slipped st for first dec of rnd.

**Next (Dec) Rnd:** \*sk3p, p1, B6, p1; rep from \* to end – 63 sts.

**Next (Dec) Rnd:** \*sk2p, B6; rep from \* to end – 49 sts.

**Next (Dec) Rnd:** \*sk2p, k4; rep from \* to end – 35 sts.

**Next (Dec) Rnd:** \*sk2p, k2; rep from \* to end – 21 sts.

**Next (Dec) Rnd:** \*sk2p; rep from \* to end – 7 sts.

Cut yarn and draw through remaining sts.

### FINISHING

Following package directions, make a medium pompom. Tie pompom to top of Hat. Weave in ends.



<b>ABBREVIATIONS / REFERENCES</b> Click for explanation and illustration	
<u>beg = begin(s)(ning)</u>	<u>cn = cable needle</u>
<u>dec = decreas(e)(s)(ing)</u>	<u>inc = increas(e)(s)(ing)</u>
<u>k = knit</u>	<u>k2tog = knit 2 together</u>
<u>p = purl</u>	<u>rep = repeat(s)(ing)</u>
<u>rnd(s) = round(s)</u>	<u>RS = right side</u>
<u>sl = slip</u>	<u>st(s) = stitch(es)</u>
<u>WS = wrong side</u>	

Learn to knit instructions: <http://learnToKnit.LionBrand.com>

Every effort has been made to have the knitting and crochet instructions accurate and complete. We cannot be responsible for variance of individual knitters and crocheters, human errors, or typographical mistakes.

\**Fishermen's Wool®* (Article #150). 100% Pure Virgin Wool

**202:** 78% Pure Virgin Wool, 13% Acrylic, 9% Rayon; package size: 8 oz (227 g), 465 yards (425 m)

**202:** 6 oz (170 g), 348 yards (318 m)



We want your project to be a success! If you need help with this or any other Lion Brand pattern, e-mail support is available 7 days per week. Just click [here](#) to explain your problem and someone will help you!

**For thousands of free patterns, visit our website [www.LionBrand.com](http://www.LionBrand.com)**

**To order visit our website [www.lionbrand.com](http://www.lionbrand.com) or call: (800) 258-YARN (9276) any time!**

Copyright ©1998-2011 Lion Brand Yarn Company, all rights reserved. No pattern or other material may be reproduced -- mechanically, electronically, or by any other means, including photocopying -- without written permission of Lion Brand Yarn Company.