



Free Knitting Pattern
Lion Brand® Wool-Ease®
Ardley Jacket
Pattern Number: 90084AD



This beautiful cardigan is cozy and flattering.

Free Knitting Pattern from Lion Brand Yarn

Lion Brand® Wool-Ease®

Ardsley Jacket

Pattern Number: 90084AD

SKILL LEVEL: Advanced Intermediate

SIZE: Small, Medium, Large, 1X, 2X

Finished Bust 39 (43, 46, 50, 53) in. (99 (109, 117, 127, 134.5) cm)

Finished Length 23 (23, 24, 25, 25) in. (58.5 (58.5, 61, 63.5, 63.5) cm)

Note: Pattern is written for smallest size with changes for larger sizes in parentheses. When only one number is given, it applies to all sizes. To follow pattern more easily, circle all numbers pertaining to your size before beginning.

CORRECTIONS: None as of Aug 21, 2009. To check for later updates, click [here](#).

MATERIALS

- 620-152 Lion Brand Wool-Ease® Yarn: Oxford Grey
6 (7, 8, 8, 9) Balls
- Lion Brand Knitting Needles- Size 9 [5.5 mm]
- Lion Brand Stitch Markers
- Large-Eye Blunt Needles (Set of 6)
- Additional Materials
Circular knitting needle size 7 (4.5 mm), 36 in. (91.5 cm) long
Double pointed knitting needles size 8 (5 mm)
3 buttons, 1 1/8 in. (28 mm) diameter

GAUGE:

18 sts + 24 rows = 4 in. (10 cm) in Moss Stitch using larger needles. BE SURE TO CHECK YOUR GAUGE. When you match the gauge in a pattern, your project will be the size specified in the pattern and the materials specified in the pattern will be sufficient. If it takes you less stitches and rows to make a 4 in. [10 cm] square, try using a smaller size hook or needles; if more stitches and rows, try a larger size hook or needles.

STITCH EXPLANATION:

Kfb (knit into front and back) Knit next st without removing it from left needle, then k through back of same st – 1 st increased.

PATTERN STITCH

Moss Stitch (over an even number of sts)

Row 1: *K1, p1; rep from * to end of row.

Row 2: Rep Row 1.

Rows 3 and 4: *P1, k1; rep from * to end of row.

Rep Rows 1-4 for Moss Stitch.

NOTES:

Work increased sts into Moss Stitch pattern as established.

JACKET

BACK

With larger needles, cast on 88 (96, 104, 112, 120) sts.
Work in Moss Stitch for 1 in. (2.5 cm), ending with a WS row.

Shape Sides

Next (Dec) Row: K2tog (1 st dec), work in Moss Stitch to last to 2 sts, k2tog – 86 (94, 102, 110, 118) sts at end of row. Continue in Moss Stitch as established, rep Dec Row every 6th (6th, 6th, 8th, 8th) row 5 (4, 4, 3, 3) more times – 76 (86, 94, 104, 112) sts when all decs have been completed.

Work even in Moss Stitch as established until piece measures 7 in. (18 cm) from beg, ending with a WS row.

Next (Inc) Row: Kfb in first st, work in Moss Stitch as established to last st, kfb – 78 (88, 96, 106, 114) sts at end of row.

Continue in Moss Stitch as established, rep Inc Row every 6th (6th, 6th, 8th, 8th) row 5 (4, 4, 3, 3) times – 88 (96, 104, 112, 120) sts when all incs completed.

Work even in Moss Stitch as established until piece measures 14 (14, 14 1/2, 15, 15) in. (35.5 (35.5, 37, 38, 38) cm) from beg, end with a WS row.

Shape Armholes

Bind off 5 (6, 8, 9, 10) sts at beg of next 2 rows – 78 (84, 88, 94, 100) sts.

Next Row: Work in Moss Stitch as established.

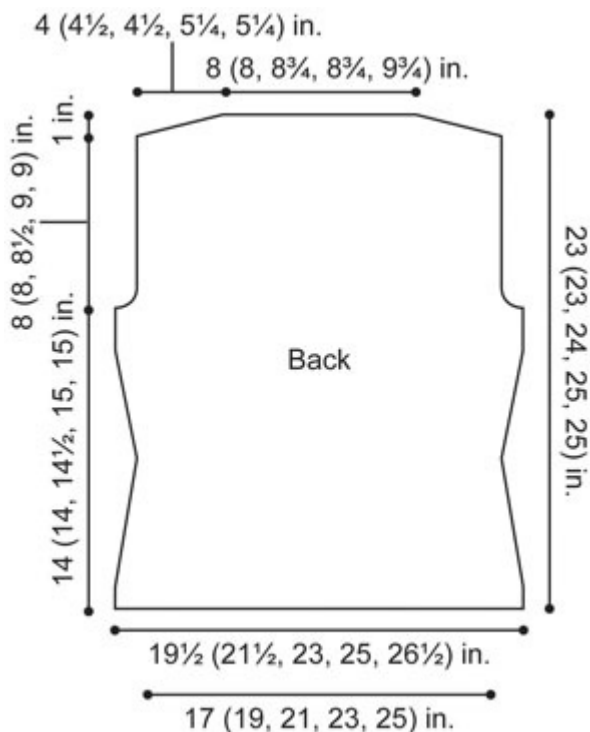
Next (Dec) Row: K2tog, work in Moss Stitch as established to last 2 sts, k2tog – 76 (82, 86, 92, 98) sts at end of row.

Rep last 2 rows 2 (2, 2, 2, 3) more times – 72 (78, 82, 88, 92) sts when all decs have been completed.

Work even in Moss Stitch until piece measures 22 (22, 23, 24, 24) in. (56 (56, 58.5, 61, 61) cm) from beg, end with a WS row.

Shape Shoulder

Bind off 6 (7, 7, 8, 8) sts at beg of next 6 rows for shoulders. Bind off rem 36 (36, 40, 40, 44) sts.



LEFT FRONT

Note: Read directions carefully before beginning. You will be working shaping for front edge and for side at the same time. With larger needles, cast on 32 (36, 40, 44, 48) sts. Work Row 1 of Moss Stitch.

Next (Inc) Row (WS): Kfb in first st (front shaping), work in Moss Stitch to end of row – 33 (37, 41, 45, 49) sts at end of row. Continue in Moss Stitch, rep Inc Row every 4th row 25 (25, 26, 28, 28) more times for front shaping, AT THE SAME TIME, when piece measures 1 in. (2.5 cm) from beg, end with a WS row and begin side shaping as follows:

Shape Side

Next (Dec) Row (RS): K2tog, work in Moss Stitch to end. Continue to work incs for front shaping as established, AT THE SAME TIME, rep Dec Row for side shaping every 6th (6th, 6th, 8th, 8th) row 5 (4, 4, 3, 3) more times. Continue as established, working incs for front shaping until piece measures 7 in. (18 cm) from beg, ending with a WS row.

Next (Inc) Row (RS): Kfb of first st, work in Moss Stitch to end. Continue to work incs for front shaping, AT THE SAME TIME, rep Inc Row for side shaping every 6th (6th, 6th, 8th, 8th) row 5 (4, 4, 3, 3) more times.

Continue, working incs for front shaping ONLY until piece measures 14 (14, 14 1/2, 15, 15) in. (35.5 (35.5, 37, 38, 38) cm) from beg, end with WS row.

Shape Armhole

Next Row (RS): Bind off 5 (6, 8, 9, 10) sts, work in Moss Stitch as established to end. Continue in Moss Stitch, working incs for front shaping, AT THE SAME TIME, dec 1 st at beg of next 3 (3, 3, 3, 4) RS rows for armhole shaping. Continue to work incs for front shaping until all incs complete – 50 (53, 56, 61, 63) sts when all incs completed. Work even in Moss Stitch until piece measures 18 (18, 19, 20, 20) in. (46 (46, 48, 51, 51) cm) from beg, ending with a RS row.

Shape Neck

Next Row (WS): Bind off 27 (27, 30, 32, 34) sts, work in Moss Stitch to end – 23 (26, 26, 29, 29) sts at end of row.

Next Row (RS): Work in Moss Stitch as established across row.

Next (Dec) Row: K2tog, work in Moss Stitch as established to end. Rep last 2 rows 4 more times – 18 (21, 21, 24, 24) sts when all decs have been completed. Work even in Moss Stitch as established until front measures same as Back to shoulders, ending with a WS row.

Shape Shoulder

Next Row (RS): Bind off 6 (7, 7, 8, 8) sts, work in Moss Stitch to end.

Next Row: Work in Moss Stitch as established across row. Rep last 2 rows once more. Bind off rem 6 (7, 7, 8, 8) sts.

Mark position for 3 buttons along front edge with first marker at waist, last marker 1 in. (2.5 cm) below neck edge, and 3rd marker evenly spaced between.

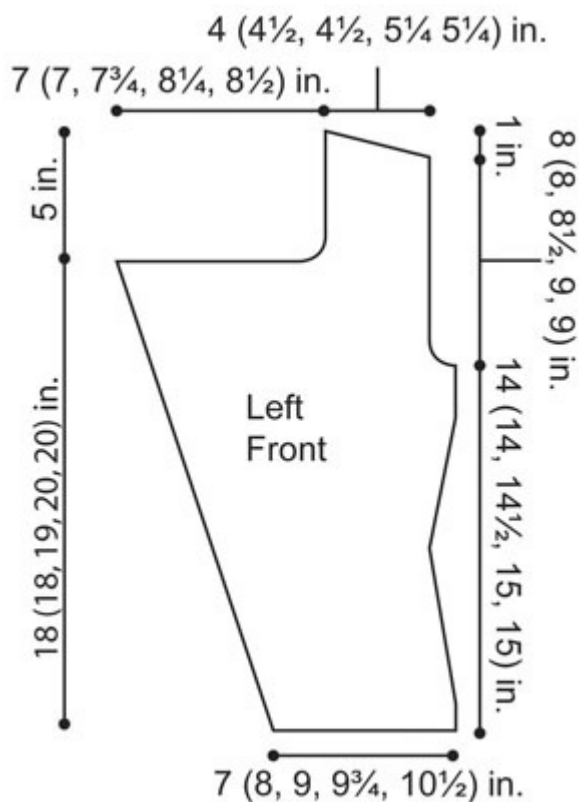
RIGHT FRONT

Note: Due to the reversible nature of Moss Stitch, the Right Front is simply a flipped-over Left Front.

Work same as for Left Front, working buttonholes on front edge opposite markers on Left Front, as follows:

Next Row: Beg at front edge, work 5 sts in Moss Stitch as established, bind off 2 sts, work in Moss Stitch to end.

Next Row: Work in Moss Stitch, casting on 2 sts over bound-off stitches of previous row.



SLEEVE (make 2)

With larger needles, cast on 42 (44, 44, 46, 46) sts. Work in Moss Stitch for 4 rows.

Next (Inc) Row: Kfb, work in Moss Stitch to last st, kfb – 44 (46, 46, 48, 48) sts at end of this row. Continue in Moss Stitch, rep Inc Row every 12th (12th, 10th, 8th, 6th) row 2 (2, 4, 1, 7) more times, then every 14th (14th, 12th, 10th, 8th) row 4 (4, 4, 8, 6) times – 56 (58, 62, 66, 74) sts when all incs have been completed. Work even in Moss Stitch as established until piece measures 17 in. (43 cm) from beg, ending with a WS row.

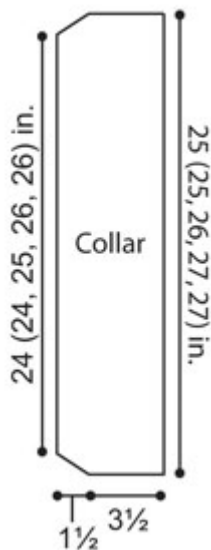
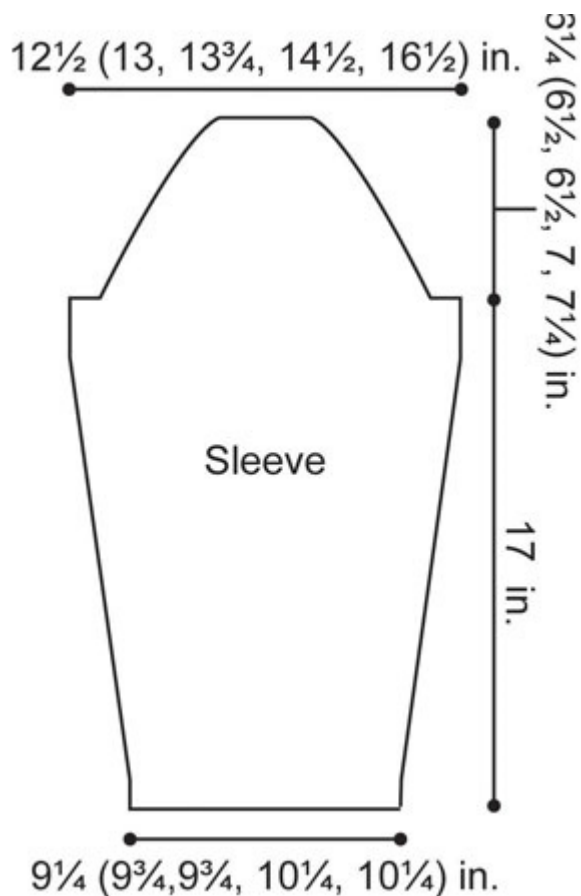
Shape Cap

Bind off 5 (6, 8, 9, 10) sts at beg of next 2 rows – 46 (46, 46, 48, 54) sts rem.

Next (Dec) Row: K2tog, work in Moss Stitch as established to last 2 sts, k2tog – 44 (44, 44, 46, 52) sts at end of row. Continue in Moss Stitch as established, rep Dec Row every other row 16 (17, 17, 18, 19) more times – 12 (10, 10, 10, 14) sts when all decs have been completed.

Bind off 4 (3, 3, 3, 5) sts at beg of next 2 rows.

Bind off rem 4 sts.



COLLAR

With larger needles, cast on 16 sts. Work Row 1 of Moss Stitch across.

Next (Inc) Row (WS): Kfb, work in Moss Stitch to end of row – 17 sts.

Next (Inc) Row (RS): Work in Moss Stitch to last st, kfb in last st – 18 sts.

Rep last 2 rows once more – 20 sts when all incs have been completed. Work even in Moss Stitch as established until piece measures 24 (24, 25, 26, 26) in. (61 (61, 63.5, 66, 66) cm) from beg, end with a RS row.

Next (Dec) Row (WS): K2tog, work in Moss Stitch to end of row – 19 sts.

Next (Dec) Row (RS): Work in Moss Stitch to last 2 sts, k2tog – 18 sts.

Rep last 2 rows once more – 16 sts when all decs have been completed.

Bind off rem 16 sts.

POCKET (make 2)

With larger needles, cast on 24 sts.

Row 1: Kfb, work in Moss Stitch to end of row.

Rows 2-4: Rep Row 1 – 28 sts when all incs completed. Work even in Moss Stitch as established until piece measures 5 1/2 in. (14 cm) from beg. Bind off.

FINISHING

Cord Edging

Note: Cord is attached to Collar, Pocket, Sleeves, and front and lower edge of Jacket at the same time the cord is knit. Cord is worked on 2 double-pointed needles.

Collar edging

From RS with circular needle and leaving long straight edge of Collar free for seaming, pick up 16 sts evenly spaced along short end of Collar, 119 (119, 124, 129, 129) sts evenly along curved outside edge and 16 sts along opposite short end – 151 (151, 156, 161, 161) sts.

Work attached cord edging as follows:

Cast 3 sts onto one double-pointed needle. Do not turn work, slide sts to other end of needle. *With 2nd double-pointed needle, k2, k next st tog with 1 st from Collar. Do not turn work, slide 3 sts on double-pointed needle to other end of needle. Rep from * until all Collar sts have been worked.

Cut yarn, leaving a long tail. Draw tail through rem 3 sts, then sew end of cord to knitted piece.

Pocket edging

From RS with circular needle, pick up 28 sts evenly spaced along top edge of Pocket. Work attached cord as for Collar.

Sleeve edging

From RS with circular needle, pick up 42 (44, 44, 46, 46) sts evenly spaced along lower edge of one Sleeve. Work attached cord as for Collar.

Rep for other Sleeve.

Front edging

From RS with circular needle, pick up 13 sts evenly spaced along Left Front neck, 87 (87, 91, 96, 96) sts evenly along Left Front edge, 32 (36, 40, 44, 48) sts along lower edge of Left Front, 88 (96, 104, 112, 120) sts along lower edge of Back, 32 (36, 40, 44, 48) sts along lower edge of Right Front, 87 (87, 91, 96, 96) sts evenly spaced along Right Front edge and 13 sts along Right Front neck – 352 (368, 392, 418, 434) sts. Work attached cord as for Collar.

Sew shoulder seams. Place markers 3 in. (7.5 cm) from front edge on neck of Right and Left Fronts. Sew Collar to neck edge between markers. Sew in Sleeves. Sew side and Sleeve seams.

Sew a Pocket to each Front about 2 in. (5 cm) above lower edge of front and about 1 1/2 (1 1/2, 2, 2 1/4) in. (4 (4, 5, 5, 5.5) cm) from side seam. Sew buttons to Left Front opposite buttonholes. Weave in ends.

ABBREVIATIONS / REFERENCES	
Click for explanation and illustration	
beg = begin(s)(ing)	dec = decreas(e)(s)(ing)
inc = increas(e)(s)(ing)	k = knit
k2tog = knit 2 together	p = purl
p2tog = purl 2 together	rem = remain(s)(ing)
rep = repeat(s)(ing)	RS = right side
St st = Stockinette stitch	st(s) = stitch(es)
tog = together	WS = wrong side

Learn to knit instructions: <http://learnToKnit.LionBrand.com>

Every effort has been made to have the knitting and crochet instructions accurate and complete. We cannot be responsible for variance of individual knitters and crocheters, human errors, or typographical mistakes.

We want your project to be a success! If you need help with this or any other Lion Brand pattern, e-mail support is available 7 days per week. Just click [here](#) to explain your problem and someone will help you!

For thousands of free patterns, visit our website www.LionBrand.com

To order visit our website www.lionbrand.com or call: (800) 258-YARN (9276) any time!

Copyright ©1998-2009 Lion Brand Yarn Company, all rights reserved. No pattern or other material may be reproduced -- mechanically, electronically, or by any other means, including photocopying -- without written permission of Lion Brand Yarn Company.