



Free Knitting Pattern
Lion Brand® Vanna's Choice®
NYC Skyline Afghan
Pattern Number: 90115AD



Celebrate the Big Apple with this intarsia colorwork afghan featuring New York City's famous skyline.

Free Knitting Pattern from Lion Brand Yarn

Lion Brand® Vanna's Choice®

NYC Skyline Afghan

Pattern Number: 90115AD

SKILL LEVEL: Experienced

SIZE: One Size

About 40 x 52 in. (101.5 x 132 cm), including borders

CORRECTIONS: None as of Nov 19, 2009. To check for later updates, click [here](#).

MATERIALS

- 860-108 Lion Brand Vanna's Choice Yarn: Dusty Blue
5 Balls (A)
- 860-135 Lion Brand Vanna's Choice Yarn: Rust
2 Balls (B)
- 860-170 Lion Brand Vanna's Choice Yarn: Pea Green
1 Ball (C)
- 860-125 Lion Brand Vanna's Choice Yarn: Taupe
1 Ball (D)
- 860-126 Lion Brand Vanna's Choice Yarn: Chocolate
1 Ball (E)
- 860-174 Lion Brand Vanna's Choice Yarn: Olive
1 Ball (F)
- 860-110 Lion Brand Vanna's Choice Yarn: Navy
1 Ball (G)
- 860-149 Lion Brand Vanna's Choice Yarn: Silver Grey
1 Ball (H)
- 860-151 Lion Brand Vanna's Choice Yarn: Charcoal Grey
1 Ball (I)
- 860-153 Lion Brand Vanna's Choice Yarn: Black
1 Ball (J)
- Large-Eye Blunt Needles (Set of 6)
- Additional Materials
Circular knitting needle size 9 (5.5 mm), 36 in. (91.5 cm) long.

GAUGE:

17 sts + 23 rows = 4 in. (10 cm) in St st (k on RS, p on WS). BE SURE TO CHECK YOUR GAUGE. When you match the gauge in a pattern, your project will be the size specified in the pattern and the materials specified in the pattern will be sufficient. If it takes you less stitches and rows to make a 4 in. [10 cm] square, try using a smaller size hook or needles; if more stitches and rows, try a larger size hook or needles.

STITCH EXPLANATION:

Seed Stitch

Row 1: *K1, p1; rep from * to last st, k1.

Row 2: P the knit sts, and k the purl sts.

Rep Row 2 for Seed st.

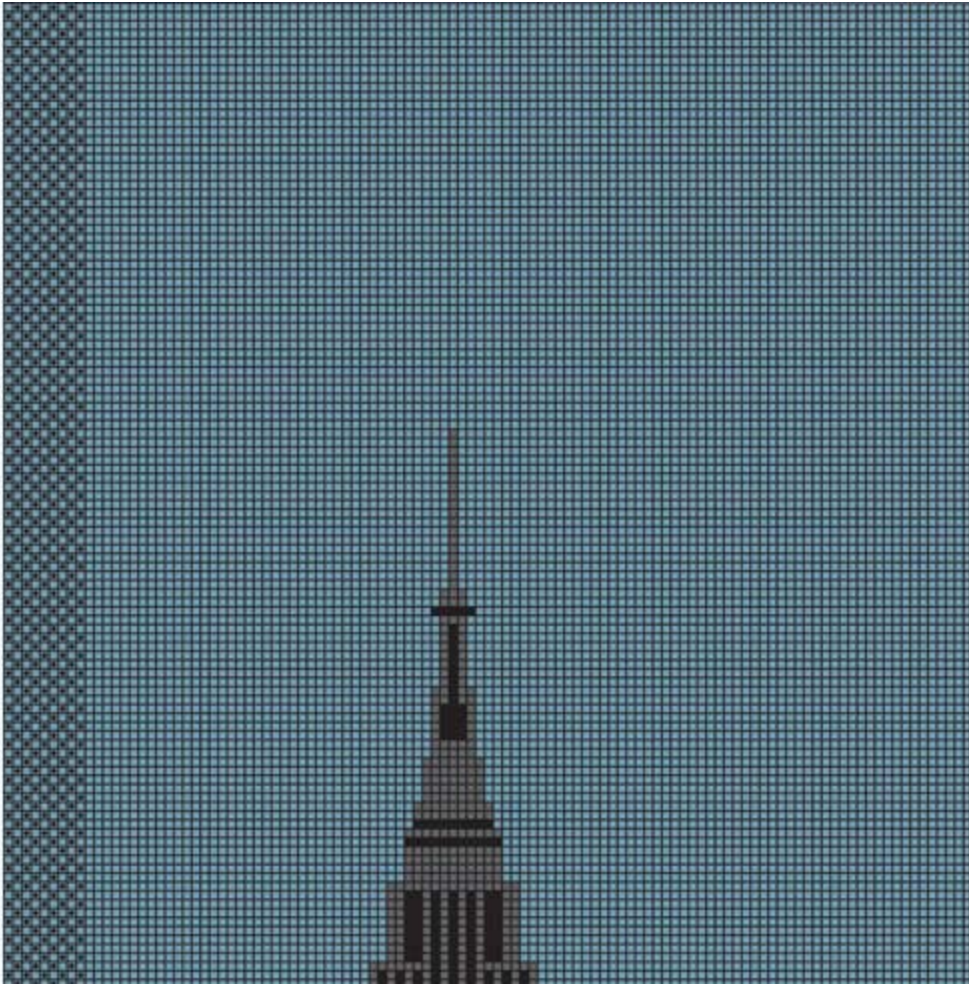
NOTES:

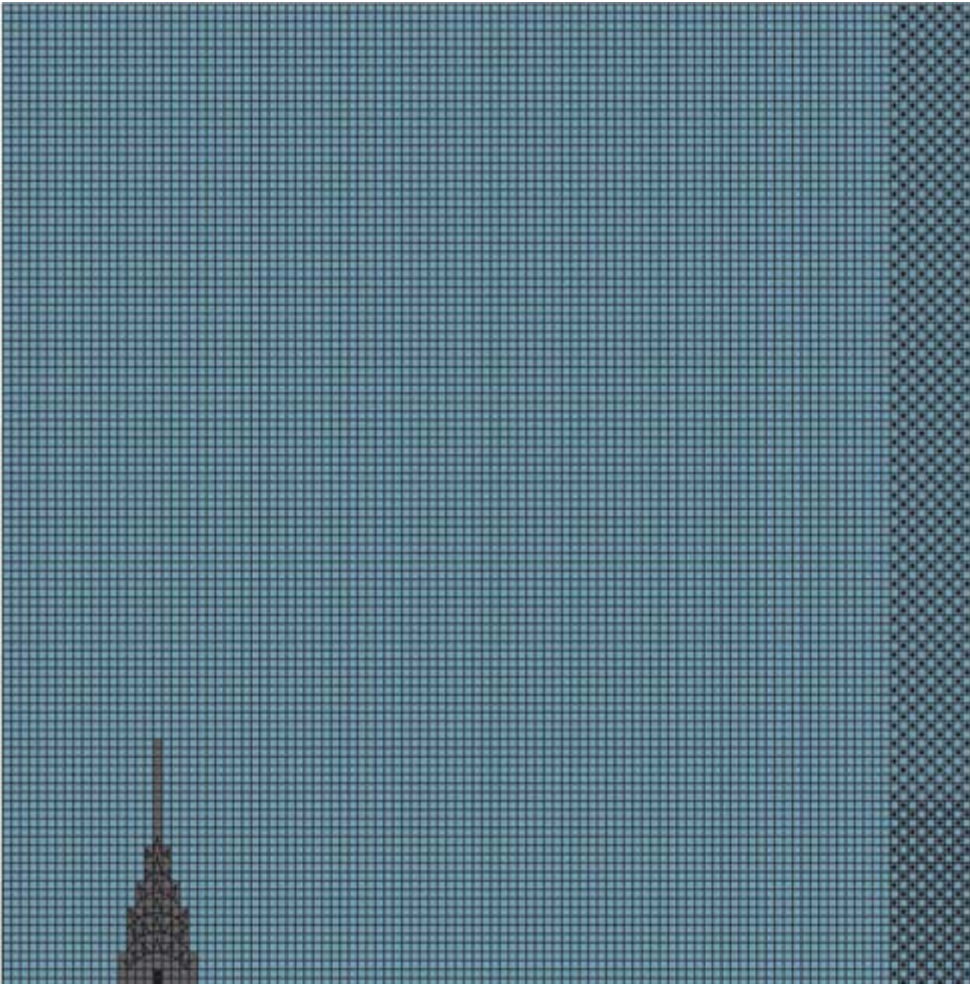
1. Circular needle is used to accommodate large number of sts. Work back and forth on circular needle as if working on straight needles.
2. Use a separate ball of yarn for each color. Twist yarns on WS to prevent holes.
3. Chart is worked in St st (k on RS, p on WS). Follow Chart from right to left on RS rows, from left to right on WS rows.
4. Vertical stripes on buildings and all windows are worked in duplicate stitch when knitting is complete.
5. Zigzag lines on top tiers of Chrysler building are embroidered straight sts, done when knitting is complete.

-  K on RS, p on WS
-  P on RS, k on WS
-  Dusty Blue (A)
-  Rust (B)
-  Pea Green (C)
-  Taupe (D)
-  Chocolate (E)
-  Olive (F)
-  Navy (G)
-  Silver Grey (H)
-  Charcoal Grey (I)
-  Black (J)
-  Straight stitch with Black (J)

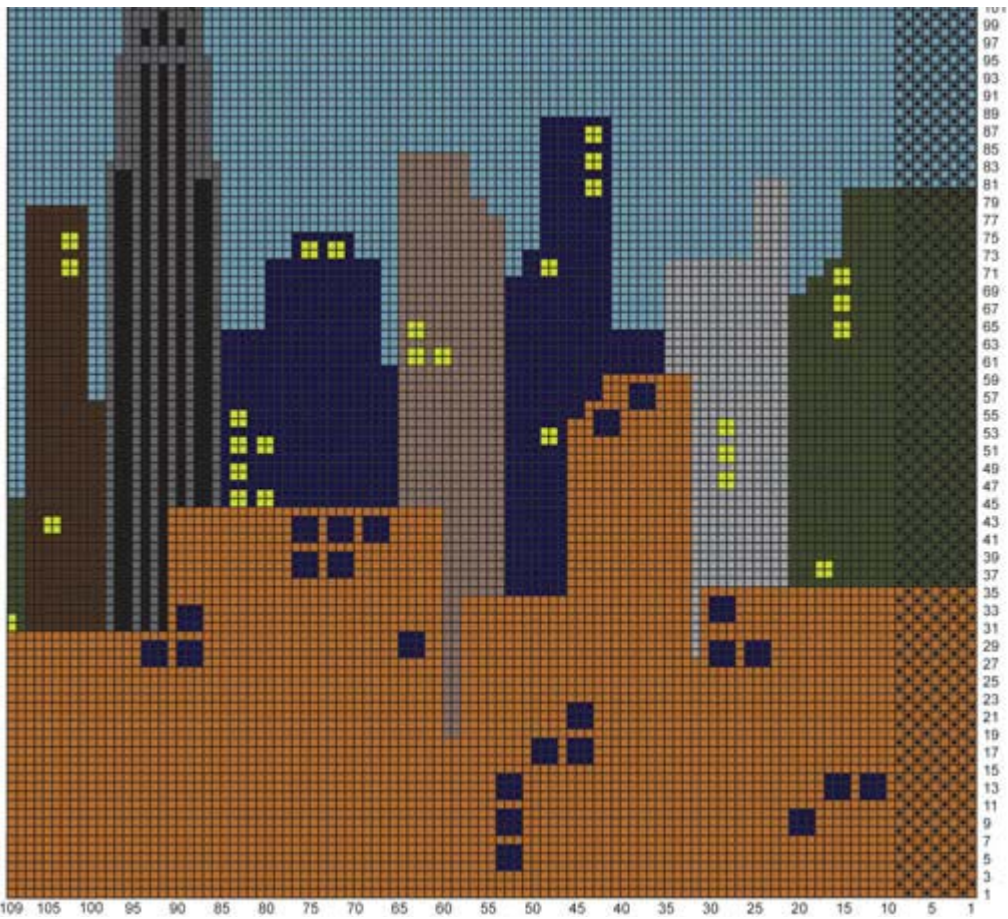
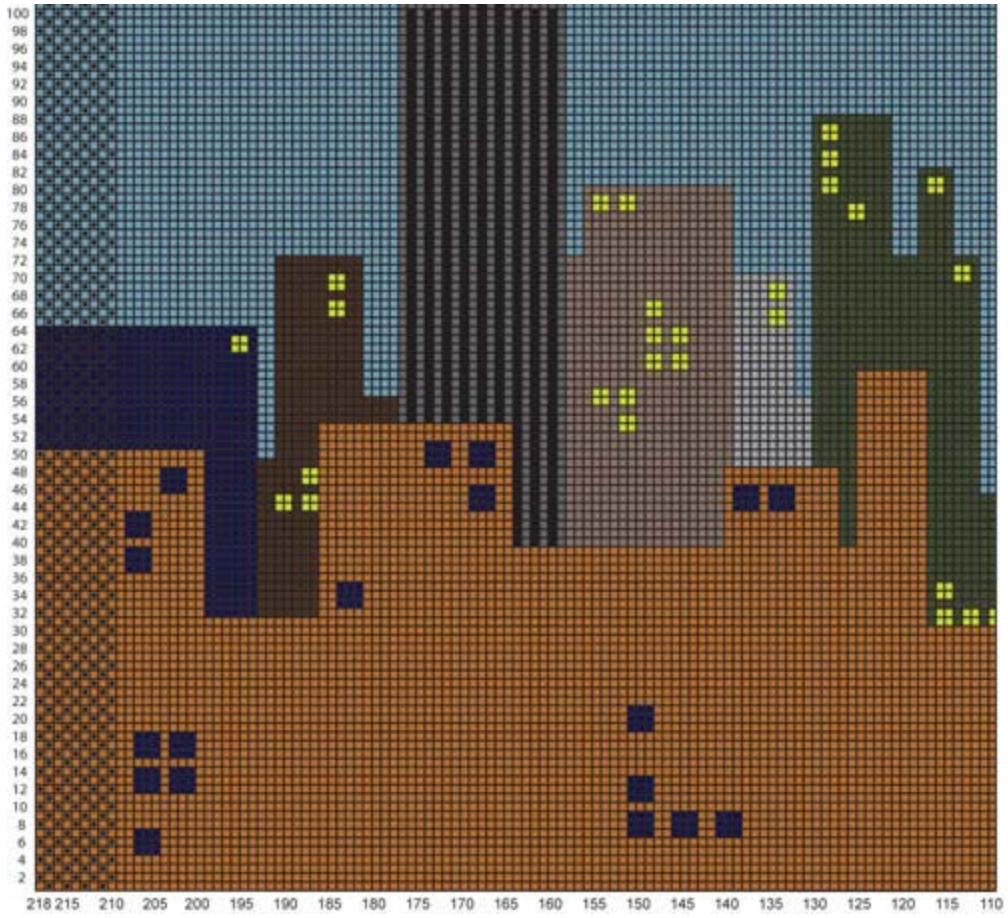
Charts appear in the following order: top left, top right, bottom left, bottom right.

208
206
204
202
200
198
196
194
192
190
188
186
184
182
180
178
176
174
172
170
168
166
164
162
160
158
156
154
152
150
148
146
144
142
140
138
136
134
132
130
128
126
124
122
120
118
116
114
112
110
108
106
104
102
100





209
207
205
203
201
199
197
195
193
191
189
187
185
183
181
179
177
175
173
171
169
167
165
163
161
159
157
155
153
151
149
147
145
143
141
139
137
135
133
131
129
127
125
123
121
119
117
115
113
111
109
107
105
103
101
99



AFGHAN

With B, cast on 218 sts. Work in Seed st until piece measures 2 in. (5 cm) from beg for lower border.

Next Row: Following Row 1 of Right Half of Chart, work in Seed st over first 9 sts (for side border); work in St st (k on RS, p on WS) over next 100 sts; following Row 1 of Left Half of Chart work in St st over next 100 sts; work in Seed st over last 9 sts (for side border).

Keeping first and last 9 sts in Seed st for border, continue to follow Charts until Row 209 has been completed.

With A, work in Seed st for 2 in. (5 cm) for top border. Bind off.

FINISHING

Following Chart, work windows and vertical stripes on Empire State and Chrysler buildings in duplicate st. On top tiers of Chrysler building, embroider straight st zigzag lines. Weave in ends.

ABBREVIATIONS / REFERENCES	
Click for explanation and illustration	
<u>beg = begin(s)(ning)</u>	<u>k = knit</u>
<u>p = purl</u>	<u>RS = right side</u>
<u>St st = Stockinette stitch</u>	<u>st(s) = stitch(es)</u>
<u>WS = wrong side</u>	

Learn to knit instructions: <http://learnToKnit.LionBrand.com>

Every effort has been made to have the knitting and crochet instructions accurate and complete. We cannot be responsible for variance of individual knitters and crocheters, human errors, or typographical mistakes.

**Vanna's Choice[®] (Article #860) is a 4-ply worsted-weight 100% acrylic yarn. • Solids in 3.5 oz/100g (170 yd/156 m) balls • Prints in 3 oz/85 g (145 yd/133 m) balls 100% acrylic*



We want your project to be a success! If you need help with this or any other Lion Brand pattern, e-mail support is available 7 days per week. Just click [here](#) to explain your problem and someone will help you!

For thousands of free patterns, visit our website www.LionBrand.com

To order visit our website www.lionbrand.com or call: (800) 258-YARN (9276) any time!

Copyright ©1998-2009 Lion Brand Yarn Company, all rights reserved. No pattern or other material may be reproduced -- mechanically, electronically, or by any other means, including photocopying -- without written permission of Lion Brand Yarn Company.