



Free Crochet Pattern
Lion Brand® Wool-Ease®
Tree of Life Afghan
Pattern Number: 90360AD



This beautiful crocheted afghan was inspired by Nicky Epstein's original pattern. [Click here](#) for the knitted version.

Free Crochet Pattern from Lion Brand Yarn
Lion Brand® Wool-Ease®
Tree of Life Afghan
Pattern Number: 90360AD

SKILL LEVEL: Experienced

SIZE: One Size
About 44 x 56 in. (112 x 142 cm)

CORRECTIONS: (applied Mar 15, 2010)

Flowers (multiple of 10 sts + 4)

Rows 14-~~26~~ 25: Rep Rows 2-13.

Rows ~~27-32~~26-30: Rep Rows 2-6.

Row ~~33~~ 31: Ch 1, turn, sc in each sc and ch-1 sp across.

AFGHAN

Flower Panel

Next 5 Rows: Ch 1, turn, sc in each st across. Work Rows 1-~~33~~ 31 of Flowers pattern.

MATERIALS

- 620-099 Lion Brand Wool-Ease Yarn: Fisherman
15 Balls
- Lion Brand Crochet Hook - Size H-8
- Lion Brand Crochet Hook - Size J-10
- Lion Brand Stitch Markers
- Large-Eye Blunt Needles (Set of 6)

GAUGE:

15 sts + 14 rows = 4 in. (10 cm) over pattern stitches. BE SURE TO CHECK YOUR GAUGE. When you match the gauge in a pattern, your project will be the size specified in the pattern and the materials specified in the pattern will be sufficient. If it takes you less stitches and rows to make a 4 in. [10 cm] square, try using a smaller size hook or needles; if more stitches and rows, try a larger size hook or needles.

STITCH EXPLANATION:

BPDC (back post double crochet) Yo, insert hook from back to front then to back, going around the post of st, draw up a loop, (yo and draw through 2 loops on hook) twice. Skip st in front of the BPDC.

FPDC (front post double crochet) Yo, insert hook from front to back then to front, going around the post of st, draw up a loop, (yo and draw through 2 loops on hook) twice. Skip st behind the FPDC.

BPTR (back post triple crochet) Yo twice, insert hook from back to front then to back, going around the post of st, draw up a loop, (yo and draw through 2 loops on hook) 3 times. Skip st in front of the BPTR.

FPTR (front post triple crochet) Yo twice, insert hook from front to back then to front, going around the post of st, draw up a loop, (yo and draw through 2 loops on hook) 3 times. Skip st behind the FPTR.

Left Cross (worked from RS) Sk next 2 post stitches, FPTR around next 2 post stitches, working in front of post stitches just made, FPTR around 2 skipped post sts.

Right Cross (worked from WS) Sk next 2 post stitches, BPTR around next 2 post stitches, working behind post stitches just made, BPTR around 2 skipped post sts.

Rev sc (reverse single crochet) Sc worked from left to right.

NOTES:

1. Front post sts are worked on odd-numbered rows (RS), and back post sts are worked on even-numbered rows (WS).
2. Always sk the next st behind a front post st (FPDC, BPTR), and in front of a back post st (BPDC, BPTR).
3. Trees pattern stitch and Flower pattern stitch can be worked from written instructions or from the stitch diagrams.
4. For clarity, RS rows in stitch diagrams are shown in red, WS rows in black. Read RS rows on diagram from right to left, and WS rows from left to right.

Diagram Key

∞ = chain (ch)

× = single crochet (sc)

} = double crochet (dc)

 = 6 dc worked into one sc


 = ch 10, (sc, ch 10, sc, ch 10, sc) worked into one sc


} = back post double crochet (BPDC)

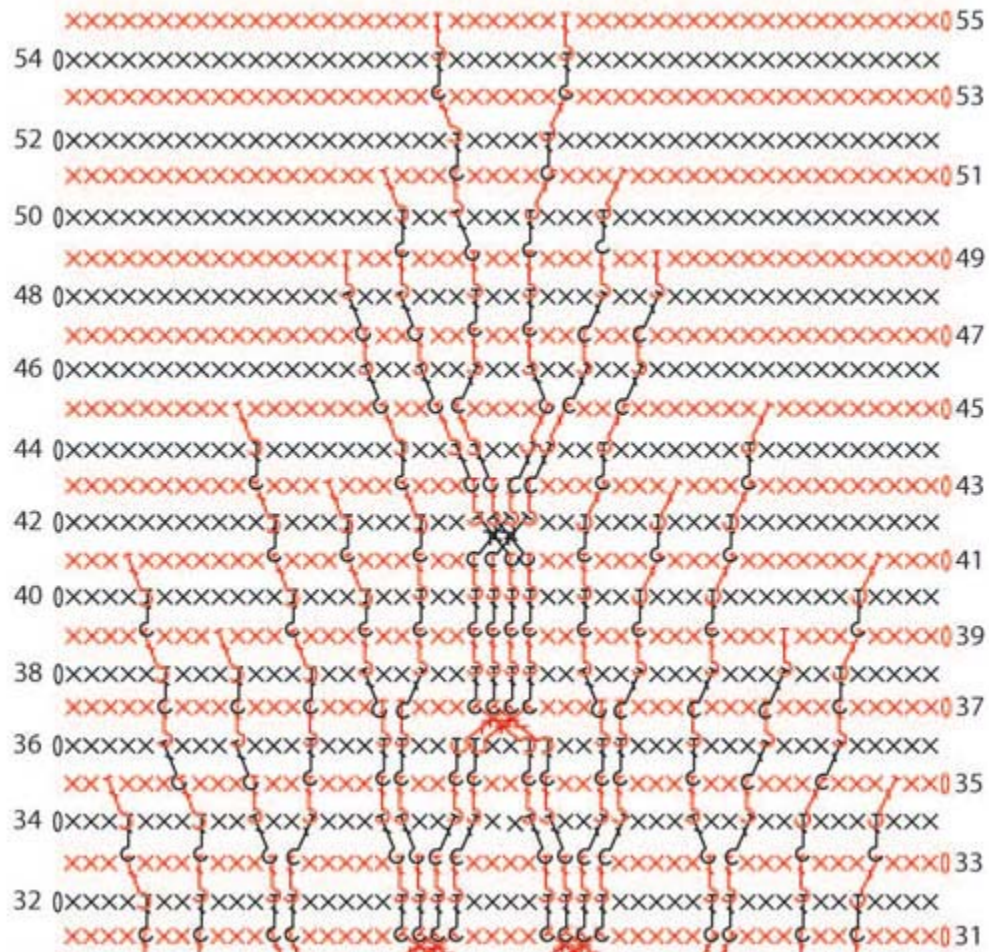
} = front post double crochet (FPDC)

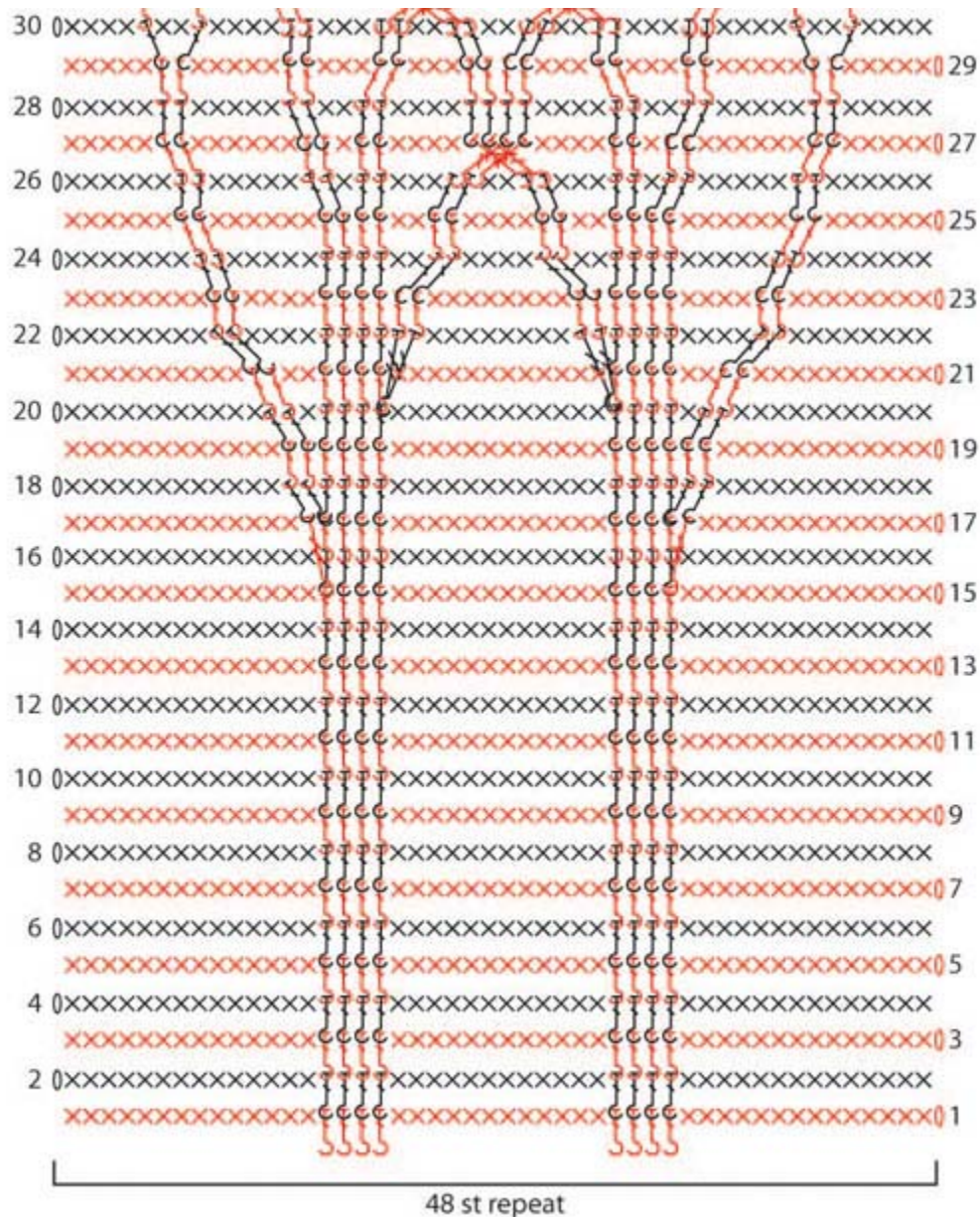
} = front post treble crochet (FPTR)

} = back post treble crochet (BPTR)

 = Left Cross (RS): Sk next 2 post sts, FPTR around next 2 post sts, working in front of post sts just made, FPTR around 2 skipped post sts

 = Right Cross (WS): Sk next 2 post sts, BPTR around next 2 post sts, working behind post sts just made, BPTR around 2 skipped post sts





PATTERN STITCHES

Trees (multiple of 48 sts)

Rows 1 (RS): Ch 1, turn, *sc in next 14 sc, FPDC around next 4 sc, sc in next 12 sc, FPDC around next 4 sc, sc in next 14 sc; rep from * 2 more times.

Note: In all following rows post sts are worked around post sts only. You may need to "lean" your hook forwards or backwards to reach the next post st. Always remember to sk the next st, in front of or behind, the post st.

Row 2: Ch 1, turn, *sc in next 14 sc, BPDC around next 4 post sts, sc in next 12 sc, BPDC around next 4 post sts, sc in next 14 sc; rep from * 2 more times.

Rows 3–16: Rep Rows 1 and 2 seven times.

Row 17: Ch 1, turn, *sc in each of next 13 sc, FPTR around next post st 2 rows below, FPDC around next 4 post sts, sc in each of next 12 sc, FPDC around next 4 post sts, FPTR around same post st 2 rows below, sc in next 13 sc; rep from * 2 more times.

Row 18: Ch 1, turn, *sc in next 12 sc, BPDC around next post st, 2 BPDC around next post st, BPDC around next 3 post sts, sc in next 12 sc, BPDC around next 3 post sts, 2 BPDC around next post st, BPDC around next post st, sc in next 12 sc; rep from * 2 more times.

Row 19: Ch 1, turn, *sc in next 12 sc, FPDC around next 6 post sts, sc in next 12 sc, FPDC around next 6 post sts, sc in next 12 sc; rep from * 2 more times.

Row 20: Ch 1, turn, *sc in next 11 sc, BPDC around next 2 post sts, sc in next st, BPDC around next 4 post sts, sc in next 12 sc, BPDC around next 4 post sts, sc in next st, BPDC around next 2 post sts, sc in next 11 sc; rep from * 2 more times.

Row 21: Ch 1, turn, *sc in next 10 sc, FPDC around next 2 post sts, sc in next 2 sts, FPDC around next 4 post sts, sc in next 12 sc, FPDC around next 4 post sts, sc in next 2 sts, FPDC around next 2 post sts, sc in next 10 sc; rep from *

Row 40: Ch 1, turn, *sc in next 4 sc, BPDC around next post st, sc in next 7 sts, BPDC around next post st, sc in next 3 sts, (BPDC around next post st, sc in next 2 sts) twice, BPDC around next 4 post sts, (sc in next 2 sts, BPDC around next post st) twice, sc in next 3 sts, BPDC around next post st, sc in next 7 sts, BPDC around next post st, sc in next 4 sc; rep from * 2 more times.

Row 41: Ch 1, turn, *sc in next 3 sc, FPDC around next post st, sc in next 7 sts, (FPDC around next post st, sc in next 3 sts) twice, FPDC around next post st, sc in next 2 sts, FPDC around next 4 post sts, sc in next 2 sts, FPDC around next post st, (sc in next 3 sts, FPDC around next post st) twice, sc in next 7 sts, FPDC around next post st, sc in next 3 sc; rep from * 2 more times.

Row 42: Ch 1, turn, *sc in next 11 sts, (BPDC around next post st, sc in next 3 sts) twice, BPDC around next post st, sc in next 2 sts, Right Cross, sc in next 2 sts, BPDC around next post st, (sc in next 3 sts, BPDC around next post st) twice, sc in next 11 sts; rep from * 2 more times.

Row 43: Ch 1, turn, *sc in next 10 sts, (FPDC around next post st, sc in next 3 sts) 3 times, FPDC around next 4 post sts, (sc in next 3 sts, FPDC around next post st) 3 times, sc in next 10 sts; rep from * 2 more times.

Row 44: Ch 1, turn, *sc in next 10 sts, BPDC around next post st, sc in next 7 sts, BPDC around next post st, sc in next 2 sts, BPDC around next 2 post sts, sc in next 2 sts, BPDC around next 2 post st, sc in next 2 sts, BPDC around next post st, sc in next 7 sts, BPDC around next post st, sc in next 10 sts; rep from * 2 more times.

Row 45: Ch 1, turn, *sc in next 9 sts, FPDC around next post st, sc in next 7 sts, FPDC around next post st, sc in next 2 sts, FPDC around next 2 post sts, sc in next 4 sts, FPDC around next 2 post st, sc in next 2 sts, FPDC around next post st, sc in next 7 sts, FPDC around next post st, sc in next 9 sts; rep from * 2 more times.

Row 46: Ch 1, turn, *sc in next 16 sts, (BPDC around next post st, sc in next 2 sts) 5 times, BPDC around next post st, sc in next 16 sts; rep from * 2 more times.

Row 47: Ch 1, turn, *sc in next 16 sts, (FPDC around next post st, sc in next 2 sts) 5 times, FPDC around next post st, sc in next 16 sts; rep from * 2 more times.

Row 48: Ch 1, turn, *sc in next 15 sts, (BPDC around next post st, sc in next 2 sts, BPDC around next post st, sc in next 3 sts) twice, BPDC around next post st, sc in next 2 sts, BPDC around next post st, sc in next 15 sts; rep from * 2 more times.

Row 49: Ch 1, turn, *sc in next 15 sts, (FPDC around next post st, sc in next 2 sts, FPDC around next post st, sc in next 3 sts) twice, FPDC around next post st, sc in next 2 sts, FPDC around next post st, sc in next 15 sts; rep from * 2 more times.

Row 50: Ch 1, turn, *sc in next 18 sts, BPDC around next post st, sc in next 2 sts, (BPDC around next post st, sc in next 3 sts) twice, BPDC around next post st, sc in next 18 sts; rep from * 2 more times.

Row 51: Ch 1, turn, *sc in next 17 sts, FPDC around next post st, sc in next 3 sts, FPDC around next post st, sc in next 4 sts, FPDC around next post st, sc in next 3 sts, FPDC around next post st, sc in next 17 sts; rep from * 2 more times.

Row 52: Ch 1, turn, *sc in next 21 sts, BPDC around next post st, sc in next 4 sts, BPDC around next post st, sc in next 21 sts; rep from * 2 more times.

Row 53: Ch 1, turn, *sc in next 20 sts, FPDC around next post st, sc in next 6 sts, FPDC around next post st, sc in next 20 sts; rep from * 2 more times.

Row 54: Ch 1, turn, *sc in next 20 sts, BPDC around next post st, sc in next 6 sts, BPDC around next post st, sc in next 20 sts; rep from * 2 more times.

Row 55: Rep Row 53.

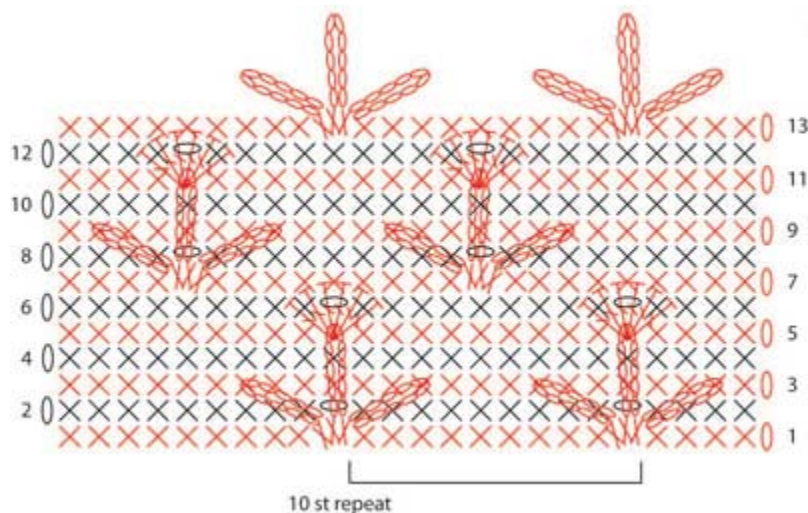
Divider

Note: All 6 rows of the Divider pattern are worked on the RS of the afghan.

Row 1 (RS): Ch 1, do not turn, working in front loops only, rev sc in each sc across.

Row 2 (RS): Ch 1, do not turn, working in unworked back loops of sc of previous row, sc in each sc across.

Rows 3-6: Rep Rows 1 and 2 two more times.



Flowers (multiple of 10 sts + 4)

Row 1 (RS): Ch 1, turn, sc in first 4 sc, *ch 10, (sc, ch 10, sc, ch 10, sc) in next sc (flower base made), sc in next 9 sc; rep from * across.

Note: When working Row 2, keep ch-10 sps of previous row on RS of the work; do not let these ch-sps fall to the WS.

Row 2: Ch 1, turn, sc in first 9 sc, ch 1, sk next 3 sc and ch-10 sps, *sc in next 9 sc, ch 1, sk next 3 sc and ch-10 sps; rep from * across to last 4 sc, sc in last 4 sc.

Row 3: Ch 1, turn, sc in first sc, *work sc by first inserting hook through first ch-10 sp of flower base and next sc, sc in next 2 sc, sc in next ch-1 sp, sc in next 2 sc, work sc by first inserting hook through last ch-10 sp of flower base and next sc, sc in next 3 sc; rep from * across to last 3 sc, sc in last 3 sc.

Row 4: Ch 1, turn, sc in each sc across.

Row 5: Ch 1, turn, sc in first 4 sc, *work 6 dc by first inserting hook through center ch-10 sp of flower base and next sc, sc in next 9 sc; rep from * across.

Note: When working Row 6, keep 6 dc of previous row on RS of the work; do not let these sts fall to the WS.

Row 6: Ch 1, turn, sc in first 9 sc, ch 1, sk next 6 dc, *sc in next 9 sc, ch 1, sk next 6 dc; rep from * across to last 4 sc, sc in last 4 sc.

Row 7: Ch 1, turn, sc in first 4 sc, *sc in next ch-1 sp, sc in next 4 sc, ch 10, (sc, ch 10, sc, ch 10, sc) in next sc (flower base made), sc in next 4 sc; rep from * across.

Note: When working Row 8, keep ch-10 sps of previous row on RS of the work; do not let these ch-sps fall to the WS.

Row 8: Ch 1, turn, sc in first 4 sc, *ch 1, sk next 3 sc and ch-10 sps, sc in next 9 sc; rep from * across.

Row 9: Ch 1, turn, sc in first 6 sc, work sc by first inserting hook through first ch-10 sp of flower base and next sc, sc in next 2 sc, sc in next ch-1 sp, sc in next 2 sc, work sc by first inserting hook through last ch-10 sp of flower base and next sc, *sc in next 3 sc, work sc by first inserting hook through first ch-10 sp of flower base and next sc, sc in next 2 sc, sc in next ch-1 sp, sc in next 2 sc, work sc by first inserting hook through last ch-10 sp of flower base and next sc; rep from * across to last sc, sc in last sc.

Row 10: Ch 1, turn, sc in each sc across.

Row 11: Ch 1, turn, sc in first 9 sc, work 6 dc by first inserting hook through center ch-10 sp of flower base and next sc, *sc in next 9 sc, work 6 dc by first inserting hook through center ch-10 sp of flower base and next sc; rep from * across to last 4 sc, sc in last 4 sc.

Note: When working Row 12, keep 6 dc of previous row on RS of the work; do not let these sts fall to the WS.

Row 12: Ch 1, turn, sc in first 4 sc, *ch 1, sk next 6 dc, sc in next 9 sc; rep from * across.

Row 13: Ch 1, turn, sc in first 4 sc, *ch 10, (sc, ch 10, sc, ch 10, sc) in next sc (flower base made), sc in next 4 sc, sc in next ch-1 sp, sc in next 4 sc; rep from * across.

Rows 14-25: Rep Rows 2-13.

Rows 26-30: Rep Rows 2-6.

Row 31: Ch 1, turn, sc in each sc and ch-1 sp across.

AFGHAN

Tree Panel

With larger hook, ch 145.

Row 1 (RS): Sc in 2nd ch from hook and in each ch across – 144 sc at end of this row.

Row 2: Ch 1, turn, (sc in next 48 sc, place marker) twice, sc in last 48 sc.

Work Rows 1-55 of Trees pattern. **Note:** There should be 144 sts worked in each row. Each rep of the Trees pattern should be worked over 48 sts (separated by stitch markers). Move markers up as work progresses and count your sts frequently.

Next 4 Rows: Ch 1, turn, sc in each st across. Remove markers. **Note:** You should end with a RS row. Do not fasten off.

Divider

Work Rows 1-6 of Divider pattern. Do not fasten off.

Flower Panel

Next 5 Rows: Ch 1, turn, sc in each st across. Work Rows 1-31 of Flowers pattern. Do not fasten off.

Next 4 Rows: Ch 1, turn, sc in each st across. **Note:** You should end with a RS row.

Divider

Work Rows 1-6 of Divider pattern. Do not fasten off.

Tree Panel

Rows 1 (WS) and 2: Ch 1, turn, sc in each sc across – 144 sts.

Row 3: Ch 1, turn, (sc in next 48 sc, place marker) twice, sc in last 48 sc.

Work Rows 1-55 of Trees pattern. Do not fasten off.

Next 2 Rows: Ch 1, turn, *hdc in next 20 sts, sc in next 8 sts, hdc in next 20 sts; rep from * 2 more times. Remove markers.

Next Row (WS): Ch 1, turn, sc in each st across. Do not fasten off.

Border

Rnd 1 (RS): Ch 2, turn, hdc evenly spaced around outside edge of Afghan, working 3 hdc in each corner; join with sl

st in first hdc.

Rnd 2: Ch 1, do not turn, working in front loops only, work rev sc in each hdc around.

Rnd 3: Ch 1, do not turn, working in unworked back loops of Rnd 1, sc in each sc around; join with sl st in first sc.

Rnd 4: Ch 1, do not turn, working in front loops only, rev sc in each sc around. Fasten off.

FINISHING

Leaves Edging

Work with smaller hook.

Row 1 (First Leaf): Ch 9, sc in 2nd ch from hook, dc in next 3 ch, sc in next 2 ch, sl st in next ch, 3 sl st in last ch, working along opposite side of foundation ch, sl st in next ch, sc in next 2 ch, dc in next 3 ch, sc in next ch. Do not fasten off.

Row 2 (Next Leaf): Ch 1, sl st in ch at base of previous Leaf, rep Row 1. Rep last row until piece measures long enough to go around all edges of Afghan (about 5 yd (4.5 m) long). Fasten off.

Note: In the next row, work into the horizontal bar in the back of the sts of the Leaves. The horizontal bar is on the WS of the st, just below the back loop.

Next Row (RS): From RS, join yarn in horizontal bar in back of first dc of First Leaf, ch 3 (counts as first dc), dc in next 2 dc, ch 1, tr in tip of Leaf, *ch 1, dc in 3 dc of next Leaf, ch 1, tr in tip of Leaf; rep from * across all Leaves.

Next Row (RS): Ch 1, do not turn, rev sc in each st across. Fasten off. Sew last row of Leaves edging to rev sc Afghan border. Weave in ends.

ABBREVIATIONS / REFERENCES	
Click for explanation and illustration	
beg = begin(s)(ning)	ch(s) = chain(s)
ch-space = space previously made	dc = double crochet
hdc = half double crochet	rep = repeat(s)(ing)
rnd(s) = round(s)	RS = right side
sl st = slip stitch	sp(s) = space(s)
st(s) = stitch(es)	tr = treble (triple) crochet
WS = wrong side	yo = yarn over

Learn to crochet instructions: <http://learnToCrochet.LionBrand.com>

Every effort has been made to have the knitting and crochet instructions accurate and complete. We cannot be responsible for variance of individual knitters and crocheters, human errors, or typographical mistakes.

We want your project to be a success! If you need help with this or any other Lion Brand pattern, e-mail support is available 7 days per week. Just click [here](#) to explain your problem and someone will help you!

For thousands of free patterns, visit our website www.LionBrand.com

To order visit our website www.lionbrand.com or call: (800) 258-YARN (9276) any time!

Copyright ©1998-2009 Lion Brand Yarn Company, all rights reserved. No pattern or other material may be reproduced -- mechanically, electronically, or by any other means, including photocopying -- without written permission of Lion Brand Yarn Company.