



Free Crochet Pattern
Lion Brand® Homespun®
Miss Yvette's Afghan
Pattern Number: 90473C



Free Crochet Pattern from Lion Brand Yarn
Lion Brand® Homespun®
Miss Yvette's Afghan
Pattern Number: 90473C

SKILL LEVEL: Easy

SIZE: One Size

About 46 x 46 in. (117 x 117 cm)

CORRECTIONS: None as of Jun 13, 2011. To check for later updates, click [here](#).

MATERIALS

- 790-386 Lion Brand Homespun Yarn: Grape
2 Balls (A)
- 790-411 Lion Brand Homespun Yarn: Mixed Berries
3 Balls (B)
- 790-418 Lion Brand Homespun Yarn: Ambrosia
2 Balls (C)
- Lion Brand Crochet Hook - Size K-10.5
- Large-Eye Blunt Needles (Set of 6)

GAUGE:

Rnds 1-2 of Square = about 3 1/2 in. (9 cm)

1 Square = about 15 x 15 in. (38 x 38 cm) BE SURE TO CHECK YOUR GAUGE. When you match the gauge in a pattern, your project will be the size specified in the pattern and the materials specified in the pattern will be sufficient. If it takes you less stitches and rows to make a 4 in. [10 cm] square, try using a smaller size hook or needles; if more stitches and rows, try a larger size hook or needles.

NOTES:

1. Squares are worked in joined rnds, with RS always facing you. Each rnd is worked in a different color. Fasten off at the end of each rnd and join new color at the beg of each new rnd.
2. A stitch diagram is provided for how to construct the Square. Refer to written instructions for specific Square for colors.
3. To keep Afghan square, join new color in a different corner on each rnd.
4. Nine Squares are worked in 3 different color sequences. Squares are arranged according to Assembly Diagram and sewn tog.

SQUARE 1 (make 3)

With A, ch 4; join with sl st in first ch to form a ring.

Rnd 1 (RS): Ch 3 (counts as dc on this row and on all rows of this pattern), 2 dc in ring, ch 2, (3 dc in ring, ch 2) 3 times; join with sl st in top of beg ch - 12 dc and 4 ch-2 sps at the end of this rnd.

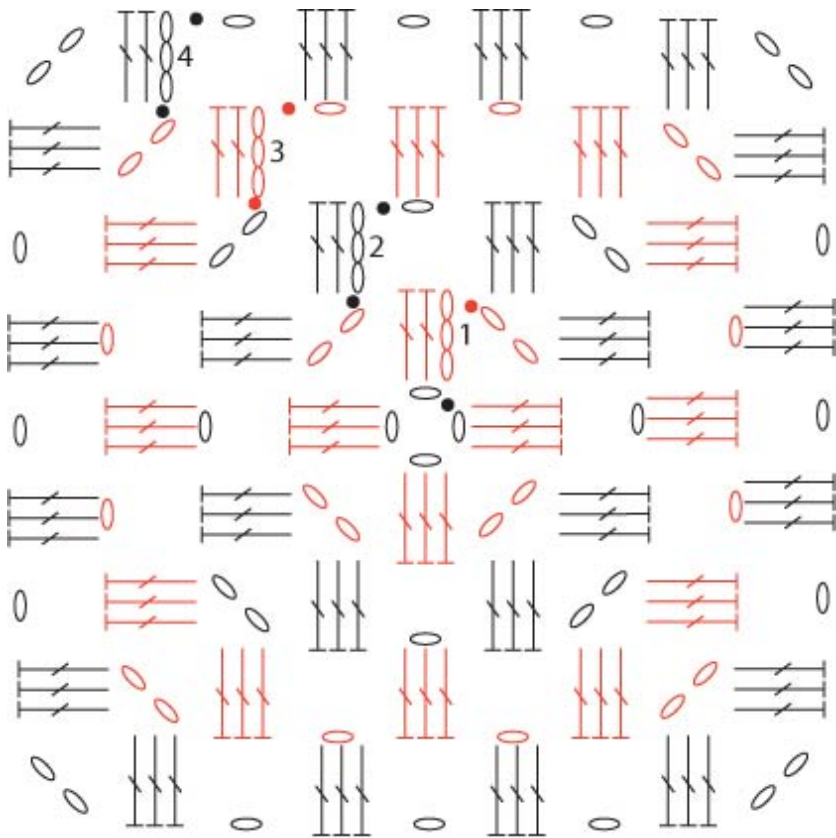
Fasten off.

Rnd 2: With RS facing, join B with sl st in any ch-2 sp, ch 3, (2 dc, ch 2, 3 dc) in same ch-2 sp (beg corner made), ch 1, *(3 dc, ch 2, 3 dc) in next ch-2 sp (corner made), ch 1; rep from * around; join with sl st in top of beg ch - 24 dc, 4 ch-2 sps, and 4 ch-1 sps at the end of this rnd. Fasten off.

Rnd 3: With RS facing, join C with sl st in any corner ch-2 sp, ch 3, (2 dc, ch 2, 3 dc) in same ch-2 sp, ch 1, 3 dc in next ch-1 sp, ch 1, *(3 dc, ch 2, 3 dc) in next ch-2 sp, ch 1, 3 dc in next ch-1 sp, ch 1; rep from * around; join with sl st in top of beg ch. Fasten off.

Rnd 4: With RS facing, join A with sl st in any corner ch-2 sp, ch 3, (2 dc, ch 2, 3 dc) in same ch-2 sp, ch 1, (3 dc in next ch-1 sp, ch 1) to next corner, *(3 dc, ch 2, 3 dc) in corner ch-2 sp, ch 1, (3 dc in next ch-1 sp, ch 1) to next corner; rep from * around; join with sl st in top of beg ch. Fasten off.

Rnds 5-10: Rep Row 4 six times, working 1 rnd each with B, C, A, B, C, and A.



- = slip stitch (sl st)
- = chain (ch)
- ∩ = double crochet (dc)

SQUARE 2 (make 3)

Work same as Square 1, working 1 rnd each with: B, C, A, B, C, A, B, C, A, B.

SQUARE 3 (make 3)

Work same as Square 1, working 1 rnd each with: C, A, B, C, A, B, C, A, B, C.

FINISHING

Following Assembly Diagram, sew Squares tog.

BorderRnd 1:

Join B with sc in any dc; sc in each dc and ch-sp around, working (sc, ch 2, sc) in each outer corner ch-2 sp; join with sl st in first sc.

Rnd 2: Ch 1, sc in each sc around, working (sc, ch 2, sc) in each corner ch-2 sp; join with st st in first sc. Fasten off. Weave in ends.

1	2	3
2	3	1
3	1	2

ABBREVIATIONS / REFERENCES

Click for explanation and illustration

<u>beg</u> = begin(s)(ning)	<u>ch(s)</u> = chain(s)
<u>ch-space</u> = space previously made	<u>dc</u> = double crochet
<u>rnd(s)</u> = round(s)	<u>sc</u> = single crochet
<u>sl st</u> = slip stitch	<u>sp(s)</u> = space(s)
<u>st(s)</u> = stitch(es)	

Learn to crochet instructions: <http://learnToCrochet.LionBrand.com>

Every effort has been made to have the knitting and crochet instructions accurate and complete. We cannot be responsible for variance of individual knitters and crocheters, human errors, or typographical mistakes.

**Homespun (Article #790) is a uniquely-textured bulky weight yarn that works up quickly and easily. 98% acrylic, 2% polyester; packaged in 6 oz/170g (185 yd/167m) pull skeins.*



We want your project to be a success! If you need help with this or any other Lion Brand pattern, e-mail support is available 7 days per week. Just click [here](#) to explain your problem and someone will help you!

For thousands of free patterns, visit our website www.LionBrand.com

To order visit our website www.lionbrand.com or call: (800) 258-YARN (9276) any time!

Copyright ©1998-2009 Lion Brand Yarn Company, all rights reserved. No pattern or other material may be reproduced -- mechanically, electronically, or by any other means, including photocopying -- without written permission of Lion Brand Yarn Company.