



**Free Knitting Pattern**  
**Lion Brand® Pound of Love®**  
**Baby Tree of Life Throw**  
Pattern Number: 90430AD



This heirloom blankie is a miniature version of Nicky Epstein's popular [Tree of Life Afghan](#).

**Free Knitting Pattern from Lion Brand Yarn**  
**Lion Brand® Pound of Love®**  
**Baby Tree of Life Throw**  
Pattern Number: 90430AD

**SKILL LEVEL:** Experienced

**SIZE:** One Size

About 26 x 34 in. (66 x 86.5 cm), including border

**CORRECTIONS:** (applied Jul 26, 2011)

New diagram for the Flower Garden section

**MATERIALS**

- 550-099 Lion Brand Pound of Love Yarn: Antique White  
1 Ball
- Lion Brand Knitting Needles - Size 7 [4.5 mm]
- Lion Brand Cable Needles (Set of 2)
- Large-Eye Blunt Needles (Set of 6)

**GAUGE:**

18 sts + 28 rows = 4 in. (10 cm). BE SURE TO CHECK YOUR GAUGE. When you match the gauge in a pattern, your project will be the size specified in the pattern and the materials specified in the pattern will be sufficient. If it takes you less stitches and rows to make a 4 in. [10 cm] square, try using a smaller size hook or needles; if more stitches and rows, try a larger size hook or needles.

**STITCH EXPLANATION:**

**2/2 PLC (2 over 2 purl left cross)** Slip 2 sts to cable needle and hold in front, p2, then k2 from cable needle.

**2/2 PRC (2 over 2 purl right cross)** Slip 2 sts to cable needle and hold in back, k2, then p2 from cable needle.

**2/1 PLC (2 over 1 purl left cross)** Slip 2 sts to cable needle and hold in front, p1, then k2 from cable needle.

**2/1 PRC (2 over 1 purl right cross)** Slip 1 st to cable needle and hold in back, k2, then p1 from cable needle.

**1/1 PLC (1 over 1 purl left cross)** Slip 1 st to cable needle and hold in front, p1, then k1 from cable needle.

**1/1 PRC (1 over 1 purl right cross)** Slip 1 st to cable needle and hold in back, k1, then p1 from cable needle.

**2/2 LC (2 over 2 left cross)** Slip 2 sts to cable needle and hold in front, k2, then k2 from cable needle.

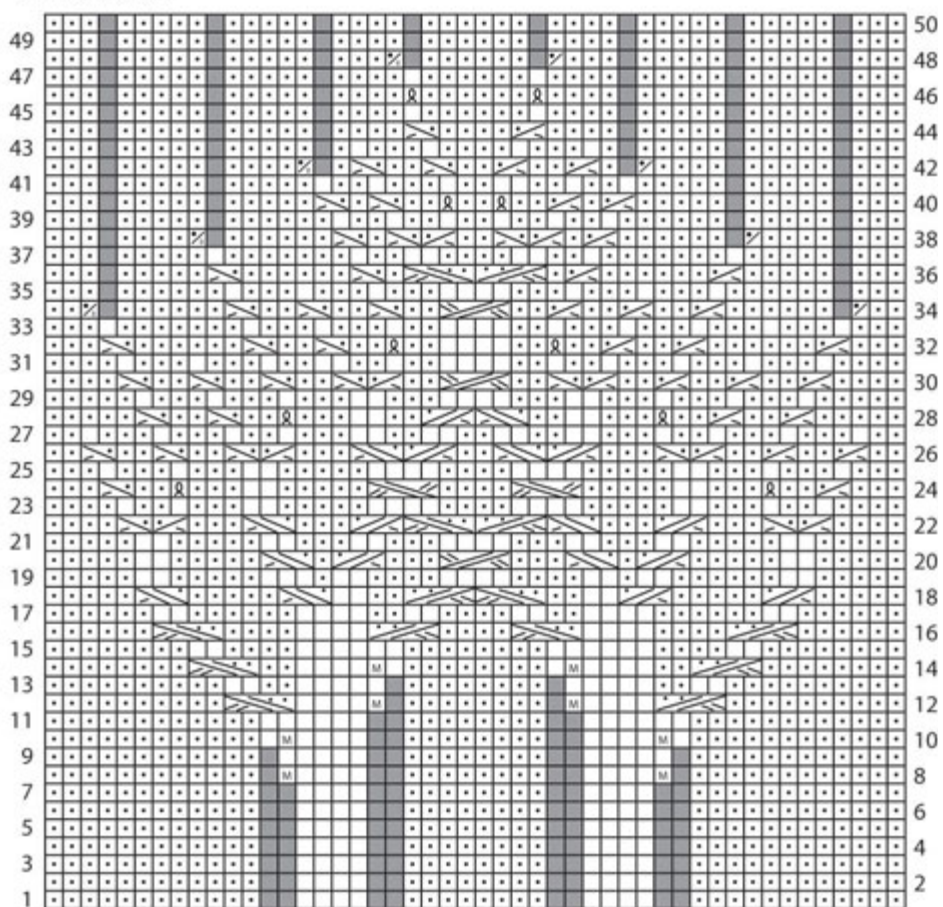
**2/2 RC (2 over 2 right cross)** Slip 2 sts to cable needle and hold in back, k2, then k2 from cable needle.

**M1 (make 1)** An increase worked by lifting horizontal thread lying between needles and placing it onto left needle. Knit this new stitch through the back loop –1 st increased.

**ssk (slip, slip, knit)** Slip next 2 sts as if to knit, one at a time, to right needle; insert left needle into fronts of these 2 sts and knit them tog –1 st decreased.

**sk2p** Slip 1 as if to knit, knit 2 together, pass slipped stitch over –2 sts decreased.

Twin Trees Chart



- |   |   |
|---|---|
| <input type="checkbox"/> k on RS, p on WS     | <input type="checkbox"/> p on RS, k on WS                   |
| <input checked="" type="checkbox"/> p2tog     | <input checked="" type="checkbox"/> p2togb                  |
| <input checked="" type="checkbox"/> M         | <input checked="" type="checkbox"/> k through the back loop |
| <input checked="" type="checkbox"/> no stitch |   |
- 
- 1/1 PRC: Slip next st onto cable needle and hold in back, k1, p1 from cable needle
  - 1/1 PLC: Slip next st onto cable needle and hold in front, p1, k1 from cable needle
  - 2/1 PRC: Slip next st onto cable needle and hold in back, k2, p1 from cable needle
  - 2/1 PLC: Slip next 2 sts onto cable needle and hold in front, p1, k2 from cable needle
  - 2/2 RC: Slip next 2 sts onto cable needle and hold in back, k2, k2 from cable needle
  - 2/2 LC: Slip next 2 sts onto cable needle and hold in front, k2, k2 from cable needle
  - 2/2 PRC: Slip next 2 sts onto cable needle and hold in back, k2, p2 from cable needle
  - 2/2 PLC: Slip next 2 sts onto cable needle and hold in front, p2, k2 from cable needle

**Twin Trees**

**Row 1 (WS):** K12, p4, k8, p4, k12 – 40 sts.

**Rows 2-7:** K the k sts and p the p sts as they appear.

**Row 8:** P12, M1, k4, p8, k4, M1, p12 – 42 sts.

**Row 9 and all remaining WS rows:** K the knit sts and p the purl sts as they appear.

**Row 10:** P12, k1, M1, k4, p8, k4, M1, k1, p12 – 44 sts.

**Row 12:** P10, 2/2 PRC, k4, M1, p8, M1, k4, 2/2, PLC, p10 – 46 sts.

**Row 14:** P8, 2/2 PRC, p2, k4, M1, k1, p8, k1, M1, k4, p2, 2/2 PLC, p8 – 48 sts.

**Row 16:** P6, 2/2 PRC, p4, k4, 2/2 PLC, p4, 2/2 PRC, k4, p4, 2/2 PLC, p6.

**Row 18:** P5, 2/1 PRC, p5, 2/1 PRC, k2, p2, 2/2 PLC, 2/2 PRC, p2, k2, 2/1 PLC, p5, 2/1 PLC, p5.

**Row 20:** P5, k2, p5, 2/1 PRC, p1, 2/1 PLC, p3, 2/2 RC, p3, 2/1 PRC, p1, 2/1 PLC, p5, k2, p5.

**Row 22:** P4, 1/1 PRC, 1/1 PLC, p3, 2/1 PRC, p3, 2/1 PLC, 2/2 PRC, 2/2 PLC, 2/1 PRC, p3, 2/1 PLC, p3, 1/1 PRC, 1/1 PLC, p4.

**Row 24:** P3, 1/1 PRC, p2, k1b, p3, k2, p5, 2/2 LC, p4, 2/2 LC, p5, k2, p3, k1b, p2, 1/1 PLC, p3.

**Row 26:** (P2, 1/1 PRC) 3 times, 1/1 PLC, p3, 2/1 PRC, 2/1 PLC, p2, 2/1 PRC, 2/1 PLC, p3, 1/1 PRC,

(1/1 PLC, p2) 3 times.

**Row 28:** P5, (1/1 PRC, p2) twice, k1b, p3, k2, p2, 2/1 PLC, 2/1 PRC, p2, k2, p3, k1b, (p2, 1/1 PLC) twice, p5.

**Row 30:** P4, (1/1 PRC, p2) 3 times, 1/1 PRC, 1/1 PLC, p2, 2/2 RC, p2, 1/1 PRC, (1/1 PLC, p2) 3 times, 1/1 PLC, p4.

**Row 32:** P3, 1/1 PRC, p6, (1/1 PRC, p2) twice, k1b, p2, k4, p2, k1b, (p2, 1/1 PLC) twice, p6, 1/1 PLC, p3.

**Row 34:** P2, p2tog, p6, (1/1 PRC, p2) 3 times, 2/2 RC, (p2, 1/1 PLC) 3 times, p6, p2togb, p2 – 46 sts.

**Row 36:** P8, 1/1 PRC, p6, 1/1 PRC, p1, 2/2 PRC, 2/2 PLC, p1, 1/1 PLC, p6, 1/1 PLC, p8.

**Row 38:** P7, p2tog, p6, 1/1 PRC, p1, 1/1 PRC, 1/1 PLC, p2, 1/1 PRC, 1/1 PLC, p1, 1/1 PLC, p6, p2togb, p7 – 44 sts.

**Row 40:** P13, 1/1 PRC, p1, 1/1 PRC, p2, k1b, p2, k1b, p2, 1/1 PLC, p1, 1/1 PLC, p13.

**Row 42:** P12, p2tog, p1, (1/1 PRC, p2) twice, 1/1 PLC, p2, 1/1 PLC, p1, p2togb, p12 – 42 sts.

**Row 44:** P17, 1/1 PRC, p4, 1/1 PLC, p17.

**Row 46:** P17, k1b, p6, k1b, p17.

**Row 48:** P16, p2tog, p6, p2togb, p16 – 40 sts.

**Row 50:** P40.

### Dividing Pattern

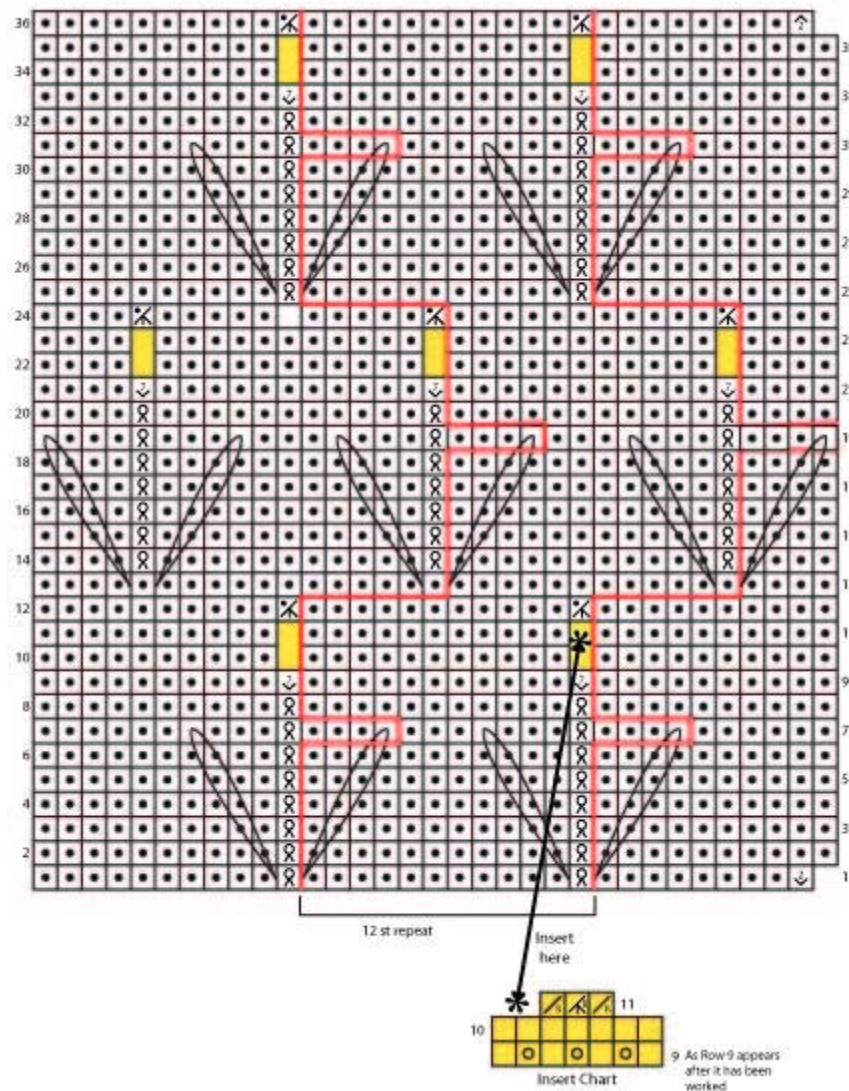
**Row 1 (RS):** Knit.

**Row 2:** Purl.

**Rows 3 and 4:** Rep Rows 1 and 2.

**Rows 5-10:** Purl.

**Rows 11-14:** Rep Rows 1-4.



## Flower Garden

**Row 1 (RS):** Inc 1 in first st, p8, \*k1b (twisted knit st), p11; rep from \* to last 11 sts, k1b, p10.

**Rows 2, 4, 6 and 8:** K10, \*p1b, k11; rep from \*, to last 11 sts, p1b, k10.

**Rows 3 and 5:** P10, \*k1b, p11; rep from \*, to last 11 sts, k1b, p10.

**Row 7:** P6, \*insert a crochet hook (or point of right needle) from front through the fabric at right of the twisted knit st in first row, catch yarn and draw up a long, loose loop; sl this loop onto right needle, knit next st and pass the loop over st, p3, k1b, p3, draw up another loop from left of same st in first row, sl the loop onto right needle, knit next st and pass loop over it, p3; rep from \* 6 more times, end p3.

**Row 9:** P10, \*((k1, yo) 3 times, k1) all in same st making 7 sts from one, p11; rep from \* to last 11 sts, ((k1, yo) 3 times, k1) all in same st making 7 sts from one, p10.

**Row 10:** K10, \*p7, k11; rep from \* to last 17 sts, p7, k10.

**Row 11:** P10, \*k2togb, k3togb, k2togb, p11; rep from \* to last 17 sts, k2togb, k3togb, k2togb, p10.

**Row 12:** K10, \*p3tog, k11; rep from \* to last 13 sts, p3tog, k10.

**Rows 13, 15 and 17:** P4, \*k1b (twisted knit st), p11; rep from \* to last 5 sts, k1b, p4.

**Rows 14, 16, 18 and 20:** K4, \*p1b, k11; rep from \* to last 5 sts, p1b, k4.

**Row 19:** \*Draw up a loop from right of twisted knit st in Row 13 and pass loop over next st as before, p3, k1b, p3, draw up another loop from left of same st and pass loop over next st as before, p3; rep from \* to last 9 sts, draw up a loop from right of twisted knit st in Row 13 and pass loop over next st as before, p3, k1b, p3, draw up another loop from left of same st and pass loop over next st as before.

**Row 21:** P4, \*((k1, yo) 3 times, k1) all in same st, p11; rep from \* to last 5 sts, ((k1, yo) 3 times, k1) all in same st, p4.

**Row 22:** K4, \*p7, k11; rep from \* to last 11 sts, p7, k4.

**Row 23:** P4, \*k2togb, k3togb, k2togb, p11; rep from \* to last 11 sts, k2togb, k3togb, k2togb, p4.

**Row 24:** K4, \*p3tog, k11; rep from \* to last 7 sts, p3tog, k4.

**Row 25:** P10, \*k1b (twisted knit st), p11; rep from \* to last 11 sts, k1b, p10.

**Rows 26-36:** Rep Rows 2-12 once more, decreasing 1 st at end of Row 36.



k on RS, p on WS



p on RS, k on WS



yarn over



k2tog



ssk



p2tog



inc 1 in st



sk2p: sl 1, k2tog, pss0



k tbl on RS, p tbl on WS



make 7 sts from one by working  
((k1, yo) 3 times, k1) all in same st  
(see Insert Chart for detail)



insert a crochet hook (or point of right needle)  
from front through the fabric at indicated side  
of the twisted knit st in indicated row, catch yarn  
and draw up a long, loose loop; sl this loop onto  
right needle, knit next st and pass the loop over st



k2togb



k3togb



p3tog



dec 1 st



## THROW

Cast on 92 sts. Knit 1 row. Purl 1 row.

**Row 1 (WS):** \*K4, work Row 1 of Twin Trees pattern or follow Twin Trees Chart Row 1 for 40 sts; rep from \* once more, k4.

**Row 2:** \*P4, work Row 2 of Twin Trees pattern or follow Twin Trees Chart Row 2 for 40 sts; rep from \* once more, p4. Continue in established pattern following row-by-row instructions or consecutive rows of Twin Trees Chart for 50 rows, ending with a RS row. Purl 1 row.

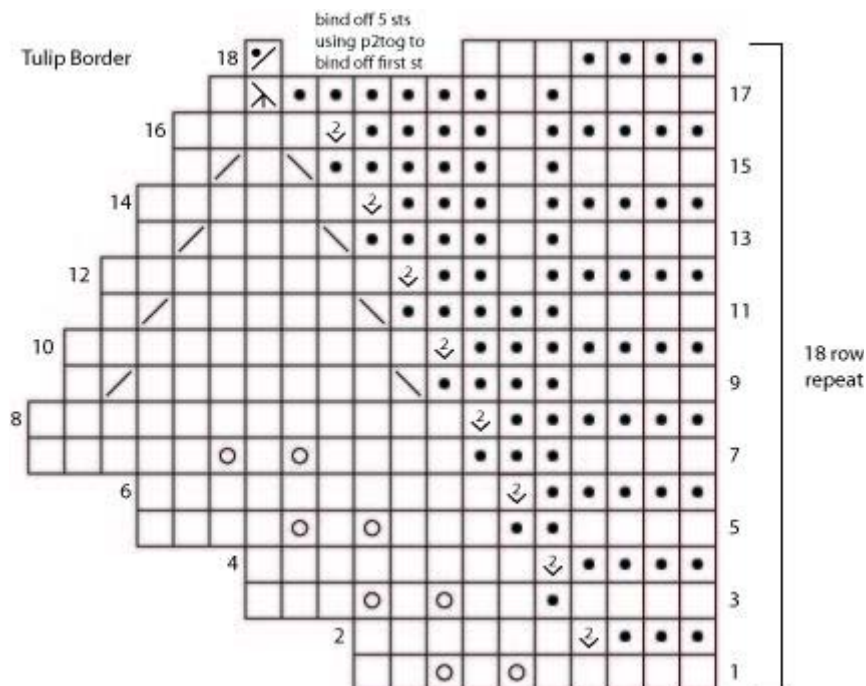
Work Rows 1-14 of Dividing Pattern.

Work Rows 1-36 of Flower Garden pattern (or follow Flower Garden Chart).

Work Rows 1-14 of Dividing Pattern.

Knit 1 row.

Work Rows 1-50 of Twin Trees pattern (or follow Twin Trees Chart). Bind off all sts.



## FINISHING

### Tulip-Bud Border

Cast on 8 sts.

**Row 1 (RS):** K5, yo, k1, yo, k2 – 10 sts.

**Row 2:** P6, k into front and back of next st (inc made), k3 – 11 sts.

**Row 3:** K4, p1, k2, yo, k1, yo, k3 – 13 sts.

**Row 4:** P8, inc in next st, k4 – 14 sts.

**Row 5:** K4, p2, k3, yo, k1, yo, k4 – 16 sts.

**Row 6:** P10, inc in next st, k5 – 17 sts.

**Row 7:** K4, p3, k4, yo, k1, yo, k5 – 19 sts.

**Row 8:** P12, inc in next st, k6 – 20 sts.

**Row 9:** K4, p4, ssk, k7, k2tog, k1 – 18 sts.

**Row 10:** P10, inc in next st, k7 – 19 sts.

**Row 11:** K4, p5, ssk, k5, k2tog, k1 – 17 sts.

**Row 12:** P8, inc in next st, k2, p1, k5 – 18 sts.

**Row 13:** K4, p1, k1, p4, ssk, k3, k2tog, k1 – 16 sts.

**Row 14:** P6, inc in next st, k3, p1, k5 – 17 sts.

**Row 15:** K4, p1, k1, p5, ssk, k1, k2tog, k1 – 15 sts.

**Row 16:** P4, inc in next st, k4, p1, k5 – 16 sts.

**Row 17:** K4, p1, k1, p6, sk2p, k1 – 14 sts.

**Row 18:** P2tog, bind off next 5 sts using p2tog st to bind off first st, p3, k4 – 8 sts.

Rep Rows 1-18 until border fits around Throw (approximately 96 in. (244 cm)). Note: It is helpful to sew border in place as you knit. Bind off. Finish sewing border in place around Throw. Weave in ends.

<b>ABBREVIATIONS / REFERENCES</b>	
Click for explanation and illustration	
<u>inc = increas(e)(s)(ing)</u>	<u>k = knit</u>
<u>k1b = knit through the back loop</u>	<u>k2tog = knit 2 together</u>
<u>k2togb = Knit 2 stitches together through back loop</u>	<u>k3tog = knit 3 together</u>
<u>k3togb = Knit 3 stitches together through back loop</u>	<u>p = purl</u>
<u>p1b = purl through the back loop</u>	<u>p2togb = purl 2 together in back</u>
<u>p3tog = purl 3 together</u>	<u>rep = repeat(s)(ing)</u>
<u>RS = right side</u>	<u>sl = slip</u>
<u>st(s) = stitch(es)</u>	<u>WS = wrong side</u>
<u>yo = yarn over</u>	

Learn to knit instructions: <http://learnToKnit.LionBrand.com>

---

Every effort has been made to have the knitting and crochet instructions accurate and complete. We cannot be responsible for variance of individual knitters and crocheters, human errors, or typographical mistakes.

We want your project to be a success! If you need help with this or any other Lion Brand pattern, e-mail support is available 7 days per week. Just click [here](#) to explain your problem and someone will help you!

**For thousands of free patterns, visit our website [www.LionBrand.com](http://www.LionBrand.com)**

**To order visit our website [www.lionbrand.com](http://www.lionbrand.com) or call: (800) 258-YARN (9276) any time!**

Copyright ©1998-2009 Lion Brand Yarn Company, all rights reserved. No pattern or other material may be reproduced -- mechanically, electronically, or by any other means, including photocopying -- without written permission of Lion Brand Yarn Company.