



**Free Knitting Pattern**  
**Lion Brand® Wool-Ease®**  
**Hanna Cowl**  
Pattern Number: 90627AD



**Free Knitting Pattern from Lion Brand Yarn**  
**Lion Brand® Wool-Ease®**  
**Hanna Cowl**  
Pattern Number: 90627AD

**SKILL LEVEL:** Intermediate

**SIZE:** One Size

**Finished Circumference** About 52 in. (132 cm)

**Finished Height** About 16 in. (40.5 cm)

**CORRECTIONS:** None as of Jul 29, 2010. To check for later updates, click [here](#).

**MATERIALS**

- 620-198 Lion Brand Wool-Ease Yarn: Clove  
1 Ball (A)
- 620-165 Lion Brand Wool-Ease Yarn: Blossom  
1 Ball (B)
- 620-184 Lion Brand Wool-Ease Yarn: Aloe  
1 Ball (C)
- 620-199 Lion Brand Wool-Ease Yarn: Pumpkin  
1 Ball (D)
- Lion Brand Stitch Markers
- Large-Eye Blunt Needles (Set of 6)
- Additional Materials  
Circular knitting needle size 8 (5 mm), 36 in. (91.5 cm) long

**GAUGE:**

20 sts = 4 in. (10 cm) in St st worked in the rnd (k every rnd), with A.

BE SURE TO CHECK YOUR GAUGE. When you match the gauge in a pattern, your project will be the size specified in the pattern and the materials specified in the pattern will be sufficient. If it takes you less stitches and rows to make a 4 in. [10 cm] square, try using a smaller size hook or needles; if more stitches and rows, try a larger size hook or needles.

**STITCH EXPLANATION:**

**Seed Stitch (worked in the rnd)**

**Rnd 1:** \*K1, p1; rep from \* around.

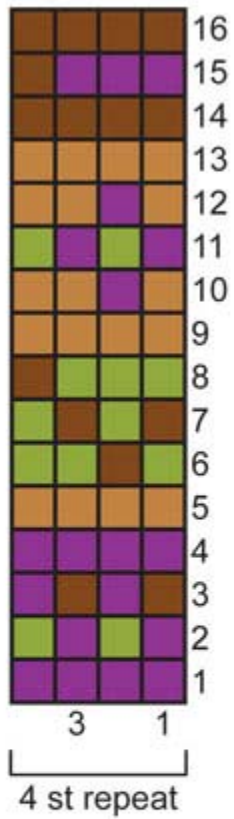
**Rnd 2:** P the knit sts, and k the purl sts.

Rep Rnd 2 for Seed st.

**NOTES:**

1. Carry colors not in use across wrong side of work.
2. Cowl is worked in the round, so every rnd of Chart should be read from right to left.

## CHART



- #198 Clove (A)
- #165 Blossom (B)
- #184 Aloe (C)
- #199 Pumpkin (D)

### COWL

With C, cast on 268 sts. Place marker for beg of rnd and join, being careful not to twist sts.

**Rnds 1-8:** With C, work in Seed st. Change to St st worked in the rnd (k every rnd).

**Next Rnd:** Beg with Rnd 1 of Chart, work 4-st rep of Chart around.

Continue in St st worked in the rnd and Chart as established, until chart Rnds 1-16 have been worked a total of 4 times, then rep

Rnds 1-4 of Chart once more.

**Next Rnds:** With C, work 8 rnds in Seed st.

Bind off.

### FINISHING

Weave in ends.

#### ABBREVIATIONS / REFERENCES

[Click for explanation and illustration](#)

beg = begin(s)(ning)

k = knit

p = purl

rep = repeat(s)(ing)

rnd(s) = round(s)

St st = Stockinette stitch

st(s) = stitch(es)	
--------------------	--

Learn to knit instructions: <http://learnToKnit.LionBrand.com>

---

Every effort has been made to have the knitting and crochet instructions accurate and complete. We cannot be responsible for variance of individual knitters and crocheters, human errors, or typographical mistakes.

We want your project to be a success! If you need help with this or any other Lion Brand pattern, e-mail support is available 7 days per week. Just click [here](#) to explain your problem and someone will help you!

**For thousands of free patterns, visit our website [www.LionBrand.com](http://www.LionBrand.com)**

**To order visit our website [www.lionbrand.com](http://www.lionbrand.com) or call: (800) 258-YARN (9276) any time!**

Copyright ©1998-2009 Lion Brand Yarn Company, all rights reserved. No pattern or other material may be reproduced -- mechanically, electronically, or by any other means, including photocopying -- without written permission of Lion Brand Yarn Company.