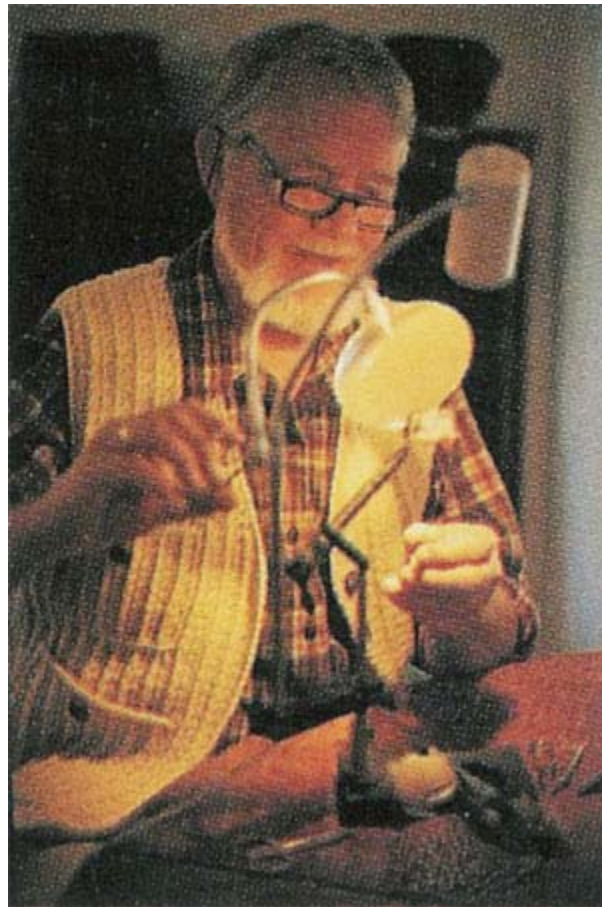




## Lion Brand® Fishermen's Wool Fisherman Crochet Aran Vest

Pattern Number: Label Pattern



Classically styled, this crochet vest is a classic destined for years of wear and enjoyment!

# Lion Brand® Fishermen's Wool Fisherman Crochet Aran Vest

Pattern Number: Label Pattern

**SKILL LEVEL:** Intermediate

**SIZE:** Small, Medium, Large, 1X  
Finished chest 41 (46, 50, 55) inches

**Note:** Pattern is written for smallest size with changes for larger sizes in parentheses. When only one number is given, it applies to all sizes. To follow pattern more easily, circle all numbers pertaining to your size before beginning.

**CORRECTIONS:** (applied Nov 27, 2005)

Shape Armholes Keeping to pattern, slip st in first 4 sts at beg and do not work last 4 sts at end of next 0 (0, 0, 1) row, 3 sts at beg and end of next row, then 2 sts at beg and end of 0 (1, 1, 1) row. Continue in pattern and dec 1 st at beg and end of next 2 (3, 3, 3) rows, then dec 1 st at beg and end of every other row 2 (2, 3, 3) times. Work even on 54 (56, 60, 62) sts until armholes measure 10½ (11, 11 ½, 12) inches from first row of armhole shaping, ending with a WS row. Fasten off.

## MATERIALS

- 150-098 Fisherman's Wool: Natural  
3 (3, 4, 4) Skeins
- Lion Brand Crochet Hook - Size I-9
- Large-Eye Blunt Needles (Set of 6)
- Additional Materials  
Nine 7/8-inch (22 mm) buttons

## GAUGE:

13 sts + 16 rows = 4 inches [10 cm] BE SURE TO CHECK YOUR GAUGE.

## STITCH EXPLANATION:

**Front-Post Double Crochet (fpdc)** Yo, insert hook from front to back then to front, going around the dc post, draw up a loop, (yo and draw through 2 loops on hook) twice. Skip st behind the FPDC.

## NOTES:

**Dec** Keep last loops of 2 sts to be dec tog on hook and work them off tog by yo and pull through all 3 loops.

**Bind off at beg of row** Slip st across number of sts to be bound off.

**Bind off at end of row** Do not work across number of sts to be bound off.

## BACK

Ch 69 (77, 83, 93).

**Row 1 (Foundation Row)** Sc in 2<sup>nd</sup> ch from hook and in each ch across – 68 (76, 82, 92) sts.

**Row 2 and all even rows (WS)** Ch 1 and turn, sc in each st across.

**Row 3 (RS)** Ch 1 and turn, sc in first 2 (3, 3, 2) sts, \*fpdc in next st, sc in each of next 2 sts; repeat from \* across, end with 0 (1, 1, 0) sc. On subsequent RS rows, work fpdc around fpdc of previous RS row and repeat Rows 2 and 3 until piece measures 14 inches from beg, checking that piece measures 20½ (23, 25, 27½) inches wide, ending on a WS row.

**Shape Armholes** Keeping to pattern, slip st in first 4 sts at beg and do not work last 4 sts at end of next 0 (0, 0, 1) row, 3 sts at beg and end of next row, then 2 sts at beg and end of 0 (1, 1, 1) row. Continue in pattern and dec 1 st at beg and end of next 2 (3, 3, 3) rows, then dec 1 st at beg and end of every other row 2 (2, 3, 3) times. Work even on 54 (56, 60, 62) sts until armholes measure 10½ (11, 11 ½, 12) inches from first row of armhole shaping, ending with a WS row. Fasten off.

## RIGHT FRONT

Ch 37 (41, 44, 49).

**Row 1 (Foundation Row)** Sc in 2nd ch from hook and in each ch across – 36 (40, 43, 48) sts.

**Row 2 and all even rows (WS)** Ch 1 and turn, sc in each st across.

**Row 3 (RS)** Ch 1 and turn, sc in first 3 sts, \*fpdc in next st, sc in each of next 2 sts; repeat from \* across, end with 0 (1, 1, 0) sc. On subsequent RS rows, work fpdc around fpdc of previous RS row and repeat Rows 2 and 3 until piece measures 14 inches from beg, checking that piece measures 10¾ (12, 13, 14½) inches wide, ending with a WS row.

**Shape Armhole** Work as for Back armhole shaping at side edge only (left side when RS faces, right side when WS faces). AT SAME TIME, when work measures 15½ inches from beg, ending with a WS row, beg **neck shaping** \*Dec at neck edge on next row, work 1 row even, dec at neck edge on next row, work 2 rows even; repeat from \* until 14 (15, 16, 17) dec's total have been worked at neck edge. Work even on 15 (15, 16, 16) sts until armhole measures same as Back. Fasten off. Mark for 6 buttons evenly spaced from bottom to neck shaping.

## LEFT FRONT

Beg and work Rows 1 and 2 same as Right Front.

**Row 3 (RS)** Ch 1 and turn, sc in first 2 (3, 3, 2) sts, \*fpdc in next st, sc in each of next 2 sts; repeat from \* across, end with sc at end of row. On subsequent RS rows, work fpdc around fpdc of previous RS row and repeat Rows 2 and 3. Work **buttonholes** to correspond to button markers of Right Front as follows: Work to 3rd st from center edge, ch 1 and skip this 3rd st from center edge, continue in pattern across row; on subsequent rows, work sc into ch-1 space. When piece measures 14 inches from beg, work armhole as for Right Front, rev shaping (side edge is right side when RS faces; left side when WS faces). When piece measures 15½ inches from beg, shape neck as for Right Front, rev shaping, and complete as for Right Front.

## LARGE POCKETS – Make 2

Ch 25.

**Row 1 (Foundation Row)** Sc in 2nd ch from hook and in each ch across – 24 sts.

**Row 2 and all even rows (WS)** Ch 1 and turn, sc in each st across.

**Row 3 (RS)** Ch 1 and turn, sc in first st, fpdc in next st, \*sc in each of next 2 sts, fpdc in next st; repeat from \* across, end with sc in last st. On subsequent RS rows, work fpdc around fpdc of previous RS row and repeat Rows 2 and 3 until 25 rows have been completed.

**Buttonhole Row 26** Ch 1 and turn, sc across first 11 sts, slip st in next st, ch 2 loosely, slip st in next st, sc in each of rem 11 sts.

**Row 27** Resume pattern as for Row 3 but skip center slip sts and work 2 sc in ch-2 space. Continue in pattern until Row 29 has been completed.

## Edging

With RS facing, ch 1, turn work and going into rows along side edge, work 22 sc evenly spaced, ch 1; with RS still facing, turn work again and slip st into each beg ch, ch 1; with RS still facing, turn work again and going into rows along side edge, work 22 sc evenly spaced, ch 1; with RS still facing, slip st into each st of last row worked, join with slip st to next sc. Fasten off.

## SMALL POCKET – Make 1

Ch 19. Work as for Large Pocket on 18 sts until 17 rows total have been completed.

**Row 18 (Buttonhole Row)** Ch 1 and turn, sc across first 8 sts, slip st in next st, ch 2 loosely, slip st in next st, sc in each of rem 8 sts.

**Row 19** Work as for Large Pocket Row 27. Continue in pattern until Row 21 has been completed.

## Edging

Work as for Large Pocket but work 16 sc along each side edge.

## FINISHING

Block pieces if desired. Sew shoulder and side seams. Sew pockets as pictured, lining up rib pattern. Sew buttons at button markers 3 sts in from edge. Sew a button behind each buttonhole of each pocket.

**Trim** With RS facing, sc (working from right to left) evenly around all edges, join with slip st to beg, ch 1, then work 1 row of reverse or backwards sc (working from left to right).

<b>ABBREVIATIONS / REFERENCES</b>	
Click for explanation and illustration	
<u>beg</u> = begin(s)(ning)	<u>ch(s)</u> = chain(s)
<u>dc</u> = double crochet	<u>dec</u> = decreas(e)(s)(ing)
<u>fpdc</u> = front post double crochet	<u>rem</u> = remain(s)(ing)
<u>rev</u> = revers(e)(ing)	<u>RS</u> = right side
<u>sc</u> = single crochet	<u>st(s)</u> = stitch(es)
<u>tog</u> = together	<u>WS</u> = wrong side
<u>yo</u> = yarn over	

Learn to crochet instructions: <http://learnToCrochet.LionBrand.com>

Every effort has been made to have the knitting and crochet instructions accurate and complete. We cannot be responsible for variance of individual knitters and crocheters, human errors, or typographical mistakes.



*\*Fishermen's Wool (Article #150) Authentic 100% Pure Virgin Wool Packaged in 8 oz./227g 465yd/425m skeins*

We want your project to be a success! If you need help with this or any other Lion Brand pattern, e-mail support is available 7 days per week. Just click [here](#) to explain your problem and someone will help you!

**For hundreds of free patterns, visit our website [www.LionBrand.com](http://www.LionBrand.com)**

**To order visit our website [www.e-yarn.com](http://www.e-yarn.com) or call: (800) 258-YARN (9276) any time!**

Copyright ©1998-2005 Lion Brand Yarn Company, all rights reserved. No pattern or other material may be reproduced -- mechanically, electronically, or by any other means, including photocopying -- without written permission of Lion Brand Yarn Company. If you would like to send a copy of this page to someone, click [here](#) and we will be happy to do it for you.