



**Free Knitting Pattern  
Lion Brand LB Collection Pure Wool  
Boyfriend Cardigan**

Pattern Number: L0175AD



# Free Knitting Pattern from Lion Brand Yarn

## Lion Brand® LB Collection® Pure Wool

### Boyfriend Cardigan

Pattern Number: L0175AD

**SKILL LEVEL:** [Experienced](#)

**SIZE:** Small, Medium, Large, 1X, 2X

**Finished Chest** 40 (44, 48, 53, 56) in. (101.5 (112, 122, 134.5, 142) cm), including front bands

**Finished Length** 27 1/2 (28, 28 1/2, 29, 29 1/2) in. (70 (71, 72.5, 73.5, 75) cm)

**Note:** Pattern is written for smallest size with changes for larger sizes in parentheses. When only one number is given, it applies to all sizes. To follow pattern more easily, circle all numbers pertaining to your size before beginning.

**CORRECTIONS:** None as of Aug 5, 2010. To check for later updates, click [here](#).

#### MATERIALS

- 489-098 [Lion Brand LB Collection Pure Wool: Natural](#)  
7 8, 9, 10, 11 Balls
- [Lion Brand Knitting Needles - Size 7 \[4.5 mm\]](#)
- [Lion Brand Knitting Needles - Size 8 \[5 mm\]](#)
- [Lion Brand Cable Needles \(Set of 2\)](#)
- [Lion Brand Stitch Holders](#)
- [Lion Brand Stitch Markers](#)
- [Large-Eye Blunt Needles \(Set of 6\)](#)
- Additional Materials  
6 buttons, 1 1/8 in. (29 mm) diameter

#### GAUGE:

32 sts of Large Cable pattern = about 5 in. (12.5 cm) . BE SURE TO CHECK YOUR GAUGE. When you match the gauge in a pattern, your project will be the size specified in the pattern and the materials specified in the pattern will be sufficient. If it takes you less stitches and rows to make a 4 in. [10 cm] square, try using a smaller size hook or needles; if more stitches and rows, try a larger size hook or needles.

#### STITCH EXPLANATION:

**kfb (knit in front and back)** Knit next st without removing it from left needle, then k through back of same st - 1 st increased.

**M1P (make 1 st as if to purl)** An increase worked by lifting the horizontal thread lying between the needles and placing it onto the left needle. Purl this new stitch through the back loop - 1 st increased.

**ssk (slip, slip, knit)** Slip next 2 sts as if to knit, one at a time, to right needle; insert left needle into fronts of these 2 sts and knit them tog - 1 st decreased.

**7/5 LC (7 over 5 left cross)** Slip 7 sts to cable needle and hold in front of work, k5 from left hand needle, slip first 2 sts from cable needle back to left hand needle and p these 2 sts, then k5 from cable needle.

#### PATTERN STITCH

##### Large Cable (panel of 32 sts)

**Rows 1 and 3 (RS):** P4, k5, p14, k5, p4.

**Rows 2 and 4:** K4, p5, k14, p5, k4.

**Row 5:** P4, M1P, k4, ssk, p12, k2tog, k4, M1P, p4.

**Row 6:** K5, p5, k12, p5, k5.

**Row 7:** P5, M1P, k4, ssk, p10, k2tog, k4, M1P, p5.

**Row 8:** K6, p5, k10, p5, k6.

**Row 9:** P6, M1P, k4, ssk, p8, k2tog, k4, M1P, p6.

**Row 10:** K7, p5, k8, p5, k7.

**Row 11:** P7, M1P, k4, ssk, p6, k2tog, k4, M1P, p7.

**Row 12:** K8, p5, k6, p5, k8.

**Row 13:** P8, M1P, k4, ssk, p4, k2tog, k4, M1P, p8.

**Row 14:** K9, p5, k4, p5, k9.

**Row 15:** P9, M1P, k4, ssk, p2, k2tog, k4, M1P, p9.

**Rows 16, 18, 20, 22 and 24:** K10, p5, k2, p5, k10.

**Row 17:** P10, 7/5 LC, p10.

**Rows 19, 21 and 23:** P10, k5, p2, k5, p10.

**Row 25:** P9, k2tog, k4, M1P, p2, M1P, k4, ssk, p9.

**Row 26:** K9, p5, k4, p5, k9.

**Row 27:** P8, k2tog, k4, M1P, p4, M1P, k4, ssk, p8.

**Row 28:** K8, p5, k6, p5, k8.

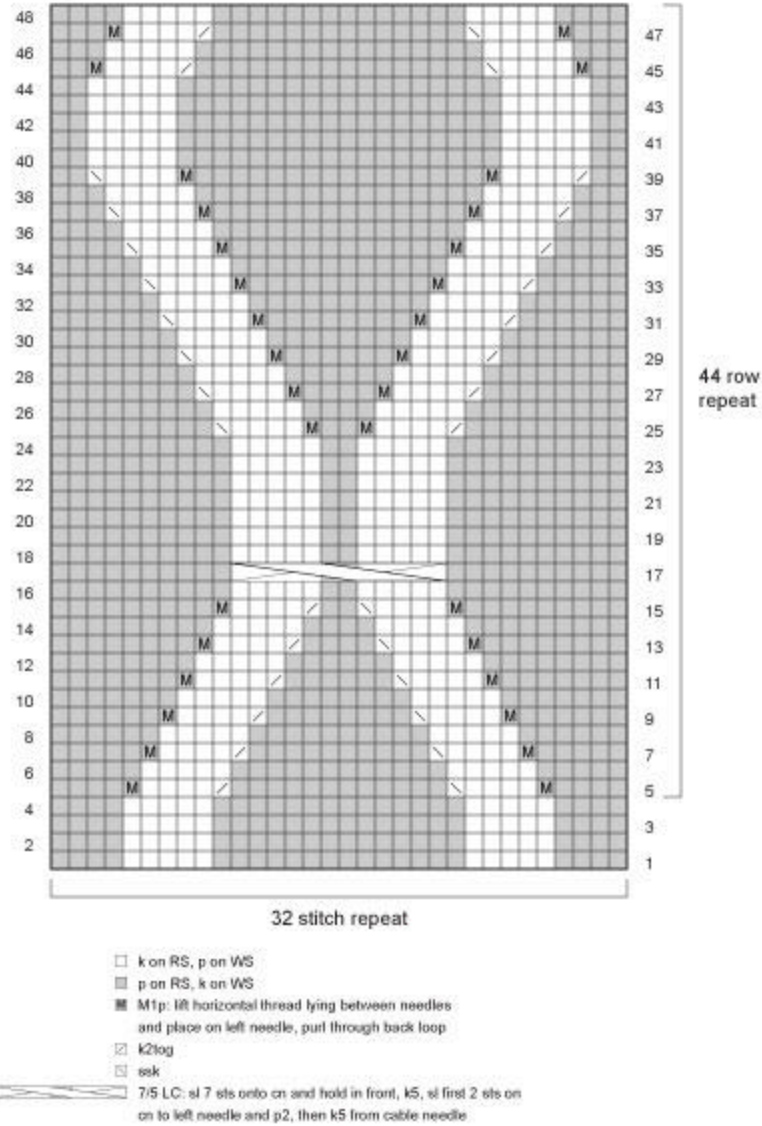
**Row 29:** P7, k2tog, k4, M1P, p6, M1P, k4, ssk, p7.

**Row 30:** K7, p5, k8, p5, k7.  
**Row 31:** P6, k2tog, k4, M1P, p8, M1P, k4, ssk, p6.  
**Row 32:** K6, p5, k10, p5, k6.  
**Row 33:** P5, k2tog, k4, M1P, p10, M1P, k4, ssk, p5.  
**Row 34:** K5, p5, k12, p5, k5.  
**Row 35:** P4, k2tog, k4, M1P, p12, M1P, k4, ssk, p4.  
**Row 36:** K4, p5, k14, p5, k4.  
**Row 37:** P3, k2tog, k4, M1P, p14, M1P, k4, ssk, p3.  
**Row 38:** K3, p5, k16, p5, k3.  
**Row 39:** P2, k2tog, k4, M1P, p16, M1P, k4, ssk, p2.  
**Rows 40, 42 and 44:** K2, p5, k18, p5, k2.  
**Rows 41 and 43:** P2, k5, p18, k5, p2.  
**Row 45:** P2, M1P, k4, ssk, p16, k2tog, k4, M1P, p2.  
**Row 46:** K3, p5, k16, p5, k3.  
**Row 47:** P3, M1P, k4, ssk, p14, k2tog, k4, M1P, p3.  
**Row 48:** K4, p5, k14, p5, k4.  
Rep Rows 5-48 for Large Cable pattern.

**NOTES:**

1. Cardigan is worked in 5 pieces: 1 Back, 2 Fronts, and 2 Sleeves. Cable pattern is worked on the Back and Fronts, the Sleeves are worked in St st (k on RS, p on WS).
2. The Pocket front and lining are worked as part of each Front.

## Cable Panel



### BACK

With smaller needles, cast on 98 (108, 116, 127, 135) sts.

**Row 1 (RS):** K0 (0, 0, 2, 0), p2 (0, 4, 4, 3), (k3, p4) 2 (3, 3, 3, 4) times, k5, p4, k2, p2, k2, p4, k5, (p4, k3) 2 (2, 2, 3, 3) times, p4, k5, p4, k2, p2, k2, p4, k5, (p4, k3) 2 (3, 3, 3, 4) times, p2 (0, 4, 4, 3), k0 (0, 0, 2, 0).

**Row 2:** K the knit sts and p the purl sts across the row.

Rep Row 2 until piece measures 3 in. (7.5 cm) from beg, end with a WS row. **Note:** End with a WS row means that the last row you work should be a WS row, and the next row that you are ready to work will be a RS row.

Change to larger needles.

**Next Row (RS):** P12 (17, 21, 23, 27), work Row 1 of Large Cable over next 32 sts, p10 (10, 10, 17, 17), work Row 1 of Large Cable over next 32 sts, p12 (17, 21, 23, 27).

Continue in pattern as established, working sts outside of cables in rev St st (p on RS, k on WS). Work until piece measures 18 in. (45.5 cm) from beg, end with Row 10 of Large Cable.

### Shape Armholes

Bind off 5 (6, 6, 7, 7) sts at beg of next 2 rows - 88 (96, 104, 113, 121) sts.

Bind off 2 sts at beg of next 2 rows - 84 (92, 100, 109, 117) sts.

Dec 1 st each side every RS row 5 (6, 7, 8, 9) times - 74 (80, 86, 93, 99) sts when all decreases have been completed.

Work even (without increasing or decreasing) until armhole measures 8 (8 1/2, 9, 9 1/2, 10) in. (20.5 (21.5, 23, 24, 25.5) cm), end with a WS row.

#### Shape Shoulders and Neck

Place marker (pm) on both sides of center 16 (20, 22, 21, 23) sts.

**Next Row (RS):** Bind off 6 (6, 6, 7, 8) sts, work to marker (first shoulder), join a 2nd ball of yarn and bind off 16 (20, 22, 21, 23) sts, for neck work to end of row for 2nd shoulder.

Work both sides at once with separate balls of yarn.

**Next Row:** Bind off 6 (6, 6, 7, 8) sts, work to neck edge, on opposite neck edge bind off 5, work to end.

**Next Row:** Bind off 6 (6, 7, 8, 8) sts, work to neck edge, on opposite neck edge, bind off 5, work to end.

**Next Row:** Bind off 6 (6, 7, 8, 8) sts, work to end - 12 (13, 14, 16, 17) sts rem on each shoulder.

Bind off 6 (6, 7, 8, 8) sts at beg of next 4 (2, 4, 4, 2) rows.

Bind off 0 (7, 0, 0, 9) sts at beg of next 2 rows.

#### LEFT FRONT

With smaller needles, cast on 51 (56, 60, 67, 71) sts.

**Row 1 (RS):** K0 (0, 0, 2, 0), p2 (0, 4, 4, 3), (k3, p4) 2 (3, 3, 3, 4) times, k5, p4, k2, p2, k2, p4, k5, p4, k3, p4, k0 (0, 0, 3, 3), p0 (0, 0, 2, 2).

**Row 2:** K the knit sts and p the purl sts across row.

Rep Row 2 until piece measures 3 in. (7.5 cm) from beg, end with a WS row.

Change to larger needles.

**Next Row (RS):** P12 (17, 21, 23, 27), work Row 1 of Large Cable over next 32 sts, p7 (7, 7, 12, 12).

Continue in pattern as established, working sts outside of cable panels in rev St st. Work even (without increasing or decreasing) for 19 more rows.

#### Pocket

**Next Row (RS):** P12 (17, 21, 23, 27) and slip these sts to a holder, join a 2nd ball of yarn and cast on 3 sts, place marker, then work in pattern as established to end - 42 (42, 42, 47, 47) sts rem on needle for front of pocket.

Keeping 3 new sts in St st (k on RS, p on WS), continue in pattern as established for 41 more rows, end with Row 18 of Large Cable. Place sts on holder for front of pocket.

Sl 12 (17, 21, 23, 27) sts from first holder to needles and cast on 39 (39, 39, 44, 44) sts for pocket lining - 51 (56, 60, 67, 71) sts.

Work in rev St st until lining is same length as front of pocket.

Slip 42 (42, 42, 47, 47) sts for front pocket from 2nd holder back to larger needle.

**Next (Joining) Row (RS):** With smaller needle, P9 (14, 18, 20, 24) from lining, hold needle with front of pocket sts parallel with and in front of needle with lining sts.

\*Continuing in Large Cable pattern as established on front of pocket, work next 2 sts tog (one each from lining and front of pocket); rep from \* to end of row - 51 (56, 60, 67, 71) sts.

Work even until piece measures about 16 1/2 in. (42 cm) from beg, end with a Row 42 of Large Cable.

#### Shape Neck and Armhole

**Note:** Neck shaping overlaps with armhole shaping.

The neck shaping will not be complete when the armhole shaping beg. When piece measures 18 in. (45.5 cm) from beg, continue working the neck shaping and AT THE SAME TIME beg the armhole shaping (armhole shaping instructions are below neck shaping instructions).

When the armhole shaping is complete, continue to work the neck shaping as instructed.

#### Neck Shaping

**Next (Dec) Row (RS):** Work to last 2 sts, p2tog - 50 (55, 59, 66, 70) sts at the end of this row.

Work even for 5 (5, 5, 3, 3) rows.

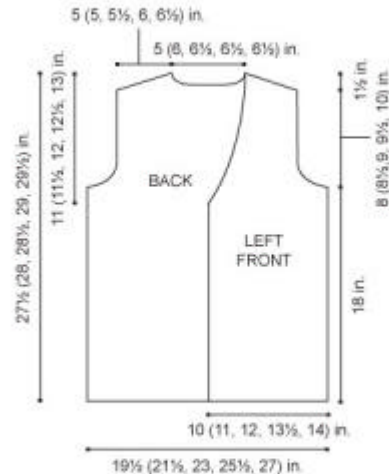
**Next (Dec) Row:** Work to last 2 sts, p2tog - 49 (54, 58, 65, 69) sts.

Rep last 6 (6, 6, 4, 4) rows 5 (5, 5, 10, 10) more times, then work even through next Row 44 of Large Cable, AT THE SAME TIME, when piece measures 18 in. (45.5 cm) from beg, end with Row 10 of Large Cable and beg shaping armhole.

**Notes:** Instructions for shaping armhole follow the neck shaping instructions. When neck shaping, through Row 44 of Large Cable, and all of armhole shaping are complete, there will be 32 (33, 35, 39, 41) sts rem.

**Next (Dec) Row (RS):** P2, k4, ssk, p16, k2tog, k4, M1P, p to end of row - 31 (32, 34, 38, 40) sts at the end of this row.

Work 1 row even.



**Next (Dec) Row (RS):** P2, k4, ssk, p14, k2tog, k4, M1P, p to end of row - 30 (31, 33, 37, 39) sts at the end of this row.

Work 1 row even.

**Next (Dec) Row (RS):** P2, k4, ssk, p12, pm, k4, p to end of row - 29 (30, 32, 36, 38) sts at the end of this row.

Work 1 row even.

**Next (Dec) Row (RS):** P2, k4, ssk, p to marker, slip marker (sm), k4, p to end - 28 (29, 31, 35, 37) sts at the end of this row.

Rep last 2 rows 4 more times - 24 (25, 27, 31, 33) sts when all reps complete.

**Shape Armhole** Bind off 5 (6, 6, 7, 7) sts at beg of next RS row.

Bind off 2 sts at beg of next RS row.

Dec 1 st at beg of every RS row 5 (8, 10, 7, 9) times.

Work even until armhole measures same length as Back armhole, end with a WS row.

**Shape Shoulder** Bind off 6 sts at beg of RS rows 4 (3, 1, 0, 0) times.

Bind off 7 sts at beg of RS rows 0 (1, 3, 1, 0) times.

Bind off 8 sts at beg of RS rows 0 (0, 0, 3, 3) times.

Bind off 9 sts at beg of RS rows 0 (0, 0, 0, 1) time.

## RIGHT FRONT

With smaller needles, cast on 51 (56, 60, 67, 71) sts.

**Row 1 (RS):** P0 (0, 0, 2, 2), k0 (0, 0, 3, 3), p4, k3, p4, k5, p4, k2, p2, k2, p4, k5, (p4, k3) 2 (3, 3, 3, 4) times, p2 (0, 4, 4, 3), k0 (0, 0, 2, 0).

Work Right Front same as Left Front, reversing Large Cable placement and all shaping.

## SLEEVES (make 2)

With smaller needles, cast on 46 (46, 46, 52, 52) sts.

**Row 1 (RS):** K 0 (0, 0, 3, 3), p4, k3, p4, k5, p4, k2, p2, k2, p4, k5, p4, k3, p4, k0 (0, 0, 3, 3).

**Row 2:** K the knit sts and p the purl sts to end of row.

Rep Row 2 until piece measures 3 in. (7.5 cm) from beg, end with a WS row.

Change to larger needles.

Work in St st (k on RS, p on WS) for 6 (6, 6, 6, 4) rows.

**Next (Inc) Row (RS):** K1, kfb, knit to last 2 sts, kfb, k1 - 48 (48, 48, 54, 54) sts at the end of this row.

Rep Inc Row every 6 rows 0 (5, 14, 7, 16) times - 46 (58, 76, 68, 86) sts when all incs have been completed.

Rep Inc Row every 8 rows 9 (6, 0, 6, 0) times - 66 (70, 76, 80, 86) sts when all incs have been completed.

Work even until piece measures 18 (18 1/2, 19, 19 1/2, 20) in. (45.7 (47, 48.5, 49.5, 51) cm) from beg, end with a WS row.

### Shape Cap

Bind off 5 (6, 6, 7, 7) sts at beg of next 2 rows - 56 (58, 64, 66, 72) sts.

Bind off 2 sts at beg of next 2 rows - 52 (54, 60, 62, 68) sts.

Work even in St st for 2 (2, 0, 0, 0) rows.

**Next (Dec) Row (RS):** K1, ssk, knit to last 3 sts, k2tog, k1 - 50 (52, 58, 60, 66) sts at the end of this row.

Work even in St st for 4 rows.

**Next (Dec) Row:** K1, ssk, knit to last 3 sts, k2tog, k1 - 48 (50, 56, 58, 64) sts at the end of this row.

Rep last 4 rows 1 (3, 3, 2, 1) more time(s) - 46 (44, 50, 54, 62) sts.

Work even in St st for 1 row.

**Next (Dec) Row (RS):** K1, ssk, knit to last 3 sts, k2tog, k1 - 44 (42, 48, 52, 60) sts at the end of this row.

Rep last 2 rows 9 (8, 11, 13, 17) more times - 26 sts.

Bind off 2 sts at beg of next 6 rows.

Bind off rem 14 sts.



## FINISHING

### Back Neckband

With smaller needles and RS facing, pick up and k38 (42, 46, 46, 50) sts evenly spaced across Back neck.

**Next Row (WS):** \*K2, p2: rep from \* across to last 2 sts, k2.

**Next 10 rows:** K the knit sts and p the purl sts.

Bind off in rib.

**Buttonband Note:** Rib on buttonband and Buttonhole Band has been designed in a specific rib pattern to accommodate buttons and buttonholes. Read through the instructions carefully, do not work in traditional rib.

Pm at beg of neck shaping on Left Front.

With RS facing and smaller needles, pick up and k69 (72, 75, 78, 81) sts evenly spaced along Left Front neck edge from shoulder down to marker, then pick up and k101 sts to lower edge - 170 (173, 176, 179, 182) sts at the end of this row.

**Next Row (WS):** P3, \*k4, p3, k4, p5, k4, p2, k2, p2, k4, p5; rep from \* 3 more times, k4, p3, k4, p5, k4, p2, k2, p3 (2, 2, 2, 2), k0 (4, 4, 4, 4), p0 (0, 3, 6, 5), k0 (0, 0, 0, 4).

**Next 10 Rows:** K the knit sts and p the purl sts.

**Next (Dec) Row (WS):** P3, \*k1, k2tog, k1, p3, k1, k2tog, k1, p5, k1, k2tog, k1, p2, k2, p2, k1, k2tog, k1, p5; rep from \* 3 more times, k1, k2tog, k1, p3, k1, k2tog, k1, p5, k1, k2tog, k1, p2, k2, p3 (2, 2, 2, 2), (k1, k2tog, k1) 0 (1, 1, 1, 1) time(s), p0 (0, 3, 6, 5), (k1, k2tog, k1) 0 (0, 0, 0, 1) time(s) - 151 (153, 156, 159, 161) sts at the end of this row.

Bind off in rib, working p2tog in each of last six p3 sections.

With RS facing, beg at 2nd p4 section from lower edge, place 6 markers for buttons in center of every other p4 section of Buttonband.

**Buttonhole Band**

Pm at beg of neck shaping on Right Front.

With RS facing and smaller needles, pick up and k101 sts from lower edge to marker, then pick up and k69 (72, 75, 78, 81) sts across Right Front neck edge to shoulder - 170 (173, 176, 179, 182) sts.

**Next Row (WS):** P0 (0, 0, 0, 1), k0 (0, 0, 2, 4), p0 (0, 2, 3, 3), k0 (3, 4, 4, 4), p3, k2, p2, k4, p5, \*k4, p3, k4, p5, k4, p2, k2, p2, k4, p5; rep from \* 3 more times, (k4, p3) twice.

**Next 4 Rows:** K the knit sts and p the purl sts.

**Next (Buttonhole) Row (RS):** Work 11 sts as established, \*bind off 4 sts (buttonhole), work to next marked p4 section; rep from \* 5 more times, work to end of row.

**Next Row:** Continue in rib as established, casting on 4 sts over bound off sts of previous row.

**Next 4 Rows:** K the knit sts and p the purl sts.

Complete Buttonhole Band same as Buttonband.

Sew shoulder and neckband seams. Sew in Sleeves. Sew side and Sleeve seams.

Weave in ends.

ABBREVIATIONS / REFERENCES	
Click for explanation and illustration	
<a href="#">beg = begin(s)(ning)</a>	<a href="#">dec = decreas(e)(s)(ing)</a>
<a href="#">inc = increas(e)(s)(ing)</a>	<a href="#">k = knit</a>
<a href="#">k2tog = knit 2 together</a>	<a href="#">p = purl</a>
<a href="#">p2tog = purl 2 together</a>	<a href="#">Pm = place marker</a>
<a href="#">rem = remain(s)(ing)</a>	<a href="#">rep = repeat(s)(ing)</a>
<a href="#">RS = right side</a>	<a href="#">sl = slip</a>
<a href="#">sm = slip marker</a>	<a href="#">St st = Stockinette stitch</a>
<a href="#">st(s) = stitch(es)</a>	<a href="#">tog = together</a>
<a href="#">WS = wrong side</a>	

Learn to knit instructions: <http://learnToKnit.LionBrand.com>

Every effort has been made to have the knitting and crochet instructions accurate and complete. We cannot be responsible for variance of individual knitters and crocheters, human errors, or typographical mistakes.

We want your project to be a success! If you need help with this or any other Lion Brand pattern, e-mail support is available 7 days per week. Just click [here](#) to explain your problem and someone will help you!

For thousands of free patterns, visit our website [www.LionBrand.com](http://www.LionBrand.com)

To order visit our website [www.lionbrand.com](http://www.lionbrand.com) or call: (800) 258-YARN (9276) any time!

Copyright © 1998-2009 Lion Brand Yarn Company, all rights reserved. No pattern or other material may be reproduced -- mechanically, electronically, or by any other means, including photocopying -- without written permission of Lion Brand Yarn Company.