



Free Knitting Pattern
Lion Brand® LB Collection® Organic Wool
Cabled Teal Vest
Pattern Number: L0186



A hoodie vest is warm and cozy in 100% wool.

Free Knitting Pattern from Lion Brand Yarn

Lion Brand® LB Collection® Organic Wool

Cabled Teal Vest

Pattern Number: L0186

SKILL LEVEL: Intermediate

SIZE: Small, Medium, Large, 1X, 2X

Finished Bust 36 (39, 42, 47, 51) in. (91.5 (99, 106.5, 119.5, 129.5) cm)

Finished Length 20 (20 1/2, 21, 22, 23) in. (51 (52, 53.5, 56, 58.5) cm)

Note: Pattern is written for smallest size with changes for larger sizes in parentheses. When only one number is given, it applies to all sizes. To follow pattern more easily, circle all numbers pertaining to your size before beginning.

CORRECTIONS: (applied)

Cable Panel

Row 17: P2, 3/1 LPC, 2/2 RC, 3/1 RPC, p2.

Row 18: ~~P3, k10, p3~~ **K3, p10, k3.**

MATERIALS

- 481-178 Lion Brand LB Collection Organic Wool: Dark Teal
4 4, 5, 5, 6 Balls
- Lion Brand Knitting Needles- Size 9 [5.5 mm]
- Lion Brand Double-Pointed Needles - Size 9
- Lion Brand Cable Needles (Set of 2)
- Lion Brand Split Ring Stitch Markers
- Lion Brand Large-Eye Blunt Needles (Set of 6)

GAUGE:

14 sts + 22 rows = 4 in. (10 cm) in St st (k on RS, p on WS);

16 st Cable Panel = 2 1/2 in. (6.5 cm). BE SURE TO CHECK YOUR GAUGE. When you match the gauge in a pattern, your project will be the size specified in the pattern and the materials specified in the pattern will be sufficient. If it takes you fewer stitches and rows to make a 4 in. [10 cm] square, try using a smaller size hook or needles; if more stitches and rows, try a larger size hook or needles.

STITCH EXPLANATION:

2/2 RC (2 over 2 right cross) Slip 2 sts to cable needle and hold in back, k2, then k2 from cable needle.

3/1 LPC (3 over 1 left purl cross) Slip 3 sts to cable needle and hold in front, p1, then k3 from cable needle.

3/1 RPC (3 over 1 right purl cross) Slip 1 st to cable needle and hold in back, k3, then p1 from cable needle.

3/2 LC (3 over 2 left cross) Slip 3 sts to cable needle and hold in front, k2, then k3 from cable needle.

3/2 LPC (3 over 2 left purl cross) Slip 3 sts to cable needle and hold in front, p2, then k3 from cable needle.

3/2 RC (3 over 2 right cross) Slip 2 sts to cable needle and hold in back, k3, then k2 from cable needle.

3/2 RPC (3 over 2 right purl cross) Slip 2 sts to cable needle and hold in back, k3, then p2 from cable needle.

3/3 LC (3 over 3 left cross) Slip 3 sts to cable needle and hold in front, k3, then k3 from cable needle.

M1 (make 1) An increase worked by lifting horizontal thread lying between needles and placing it onto left needle. Knit this new stitch through the back loop - 1 st increased.

ssk (slip, slip, knit) Slip next 2 sts as if to knit, one at a time, to right needle; insert left needle into fronts of these 2 sts and knit them tog - 1 st decreased.

ssp (slip, slip, purl) Slip next 2 sts as if to knit, one at a time, to right needle; pass them back to left needle; purl them together through back loops - 1 st decreased.

PATTERN STITCHES

K1, p1 Rib worked in rows (multiple of 2 sts + 3)

Row 1 (RS): K2, *p1, k1; rep from * to last st, k1.

Row 2 (WS): P2, *k1, p1; rep from * to last st, p1.

Rep Rows 1 and 2 for K1, p1 Rib worked in rows.

K1, p1 Rib worked in rnds (multiple of 2 sts)

Rnd 1: *K1, p1; rep from * across.

Rep Rnd 1 for K1, p1 Rib worked in rnds.

Cable Panel (over 16 sts)

Row 1 (RS): P5, 3/3 LC, p5.

Row 2 (WS): K5, p6, k5.

Row 3: P3, 3/2 RC, 3/2 LC, p3.

Row 4: K3, p10, k3.

Row 5: P2, 3/1 RPC, 2/2 RC, 3/1 LPC, p2.

Row 6: K2, p3, k1, p4, k1, p3, k2.

Row 7: P2, k3, p1, k4, p1, k3, p2.

Rows 8 and 9: Rep Rows 6 and 7.

Row 10: Rep Row 6.

Row 11: P2, k3, p1, 2/2 RC, p1, k3, p2.

Rows 12-16: Rep Rows 6-10.

Row 17: P2, 3/1 LPC, 2/2 RC, 3/1 RPC, p2.

Row 18: K3, p10, k3.

Row 19: P3, 3/2 LPC, 3/2 RPC, p3.

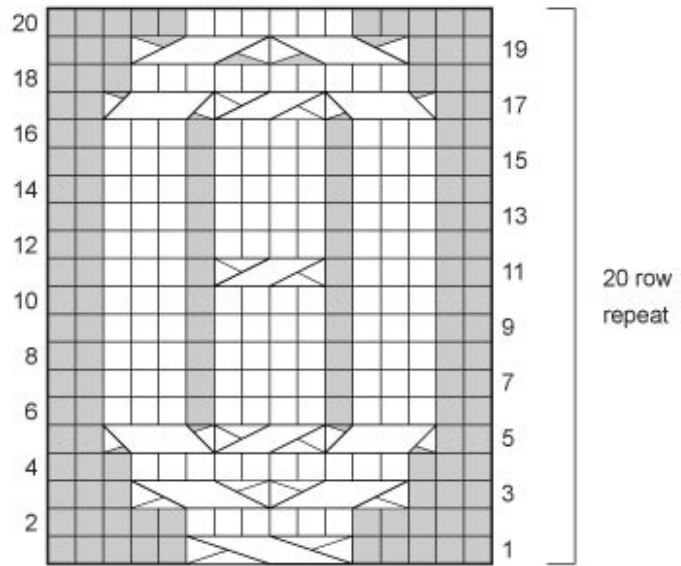
Row 20: K5, p6, k5.

Rep Rows 1-20 for Cable Panel.

NOTES:

1. Vest is made in 4 pieces: Back, Left and Right Fronts, and Hood.
2. Back and Fronts are worked in a cable and rib pattern, and from lower edge to shoulder. Cable Pattern can be worked from Chart or from written instructions below. When working from Chart, work from right to left on RS rows and from left to right on WS rows.
3. Hood is worked in St st (k on RS, p on WS) and sewn to body after shoulders are seamed.
4. Vest is designed without buttons or other closure, and is meant to be worn open.

Cable Panel



- k on RS, p on WS
- p on RS, k on WS
- ▧ 2/2 RC: Slip 2 sts onto cable needle and hold in back, k2, then k2 from cable needle
- ▨ 3/1 LPC: Slip 3 sts onto cable needle and hold in front, p1, then k3 from cable needle
- ▩ 3/1 RPC: Slip 1 st onto cable needle and hold in back, k3, then p1 from cable needle
- 3/2 LC: Slip 3 sts onto cable needle and hold in front, k2, then k3 from cable needle
- 3/2 LPC: Slip 3 sts onto cable needle and hold in front, p2, then k3 from cable needle
- ▬ 3/2 RC: Slip 2 sts onto cable needle and hold in back, k3, then k2 from cable needle
- ▭ 3/2 RPC: Slip 2 sts onto cable needle and hold in back, k3, then p2 from cable needle
- ▮ 3/3 LC: Slip 3 sts onto cable needle and hold in front, k3, then k3 from cable needle

BACK

With straight needles, cast on 83 (89, 95, 103, 111) sts.

Beg with a RS row, work in K1, p1 Rib worked in rows until piece measures 2 in. (5 cm) from beg, end with a WS row.

Note: End with a WS row means that the last row you work should be a WS row, and the next row that you are ready to work will be a RS row.

Next (Increase) Row (RS): K10 (12, 14, 16, 18), p5, k6, p5, k8 (9, 10, 12, 14), p5, k2, M1, k3, p5, k8 (9, 10, 12, 14), p5, k6, p5, k10 (12, 14, 16, 18) - 84 (90, 96, 104, 112) sts at the end of this row.

Next Row: P2 (3, 4, 4, 4), *p8 (9, 10, 12, 14), k5, p6, k5; rep from * 2 more times, p10 (12, 14, 16, 18).

Next Row: K10 (12, 14, 16, 18), *work Row 1 of Cable Panel over next 16 sts, k8 (9, 10, 12, 14); rep from * once more, work Row 1 of Cable Panel over next 16 sts, k10 (12, 14, 16, 18).

Next Row: P2 (3, 4, 4, 4), *p8 (9, 10, 12, 14), work next row of Cable Panel over next 16 sts; rep from * 2 more times, p10 (12, 14, 16, 18).

Next Row: K10 (12, 14, 16, 18), *work next row of Cable Panel over next 16 sts, k8 (9, 10, 12, 14); rep from * once more, work next row of Cable Panel over next 16 sts, k10 (12, 14, 16, 18).

Rep last 2 rows until piece measures 12 (12, 12, 12 1/2, 13) in. (30.5 (30.5, 30.5, 32, 33) cm) from beg, end with a WS row.

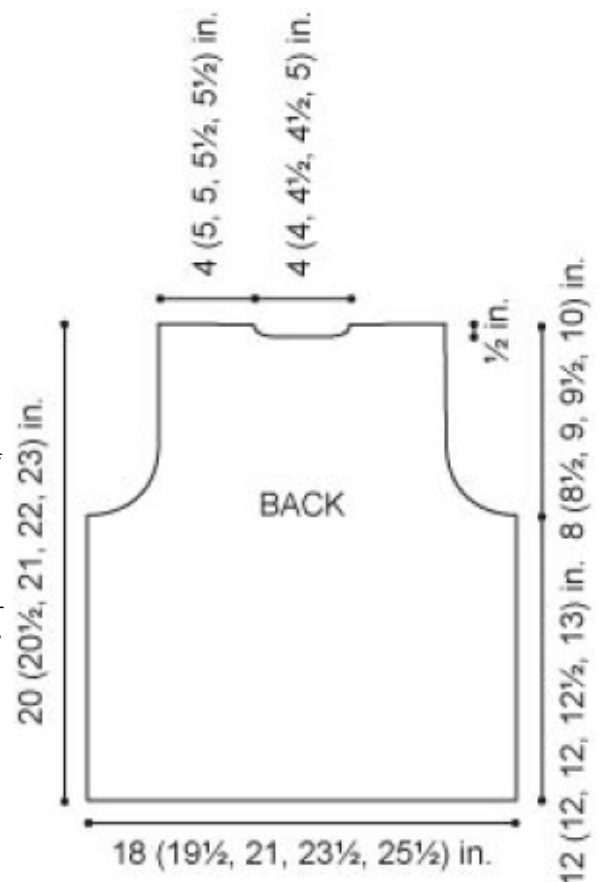
Shape Armholes

Bind off 4 (5, 5, 6, 7) sts at beg of next 2 rows.

Bind off 3 sts at beg of next 0 (0, 0, 0, 2) rows.

Bind off 2 sts at beg of next 2 (2, 2, 4, 2) rows.

Bind off 1 st at beg of next 8 (8, 10, 10, 12) rows - 64 (68, 72, 74,



76) sts rem.

Work even (without increasing or decreasing) in cable pattern as established until armhole measures 7 1/2 (8, 8 1/2, 9, 9 1/2) in. (19 (20.5, 21.5, 23, 24) cm), end with a WS row.

Shape Neck

Place marker on both sides of center 14 (14, 16, 16, 18) sts.

Next Row (RS): Work to marker, join a 2nd ball of yarn and bind off center 14 (14, 16, 16, 18) sts for neck, work to end of row - 25 (27, 28, 29, 29) sts on each side.

Note: You will be working both sides at once with separate strands of yarn.

Next 2 Rows: Work across first side; on 2nd side, bind off 3 sts on neck edge, work to end of row.

Bind off rem 22 (24, 25, 26, 26) sts on each shoulder.

LEFT FRONT

With straight needles, cast on 43 (45, 49, 51, 55) sts.

Beg with a RS row, work in K1, p1 Rib worked in rows until piece measures 2 in. (5 cm) from beg, end with a WS row.

Next (Increase) Row (RS): K10 (12, 14, 16, 18), p5, k2, M1, k3, p5, (k1, p1) 8 (8, 9, 9, 10) times, k2 - 44 (46, 50, 52, 56) sts at the end of this row.

Next Row: P2, (k1, p1) 8 (8, 9, 9, 10) times, k5, p6, k5, p10 (12, 14, 16, 18).

Next Row: K10 (12, 14, 16, 18), work Row 1 of Cable Panel over next 16 sts, (k1, p1) 8 (8, 9, 9, 10) times, k2.

Next Row: P2, (k1, p1) 8 (8, 9, 9, 10) times, work next row of Cable Panel over next 16 sts, p10 (12, 14, 16, 18).

Next Row: K10 (12, 14, 16, 18), work next row of Cable Panel over next 16 sts, (k1, p1) 8 (8, 9, 9, 10) times, k2.

Rep last 2 rows until piece measures 12 (12, 12, 12 1/2, 13) in. (30.5 (30.5, 30.5, 32, 33) cm) from beg, end with a WS row.

Shape Armhole

Bind off 4 (5, 5, 6, 7) sts at beg of next RS row.

Bind off 3 sts at beg of next 0 (0, 0, 0, 1) RS row(s).

Bind off 2 sts at beg of next 1 (1, 1, 2, 1) RS row(s).

Bind off 1 st at beg of next 4 (4, 5, 5, 6) RS rows - 34 (35, 38, 37, 38) sts rem.

Work even in cable pattern as established until armhole measures 5 1/2 (6, 6, 6 1/2, 7) in. (14 (15, 15, 16.5, 18) cm), end with a RS row.

Shape Neck

Bind off 5 sts at beg of next WS row.

Bind off 3 sts at beg of next WS row.

Bind off 1 st at beg of next 4 (3, 5, 3, 4) WS rows - 22 (24, 25, 26, 26) sts rem.

Work even in cable pattern as established until armhole measures 8 (8 1/2, 9, 9 1/2, 10) in. (20.5 (21.5, 23, 24, 25.5) cm).

Bind off.

RIGHT FRONT

With straight needles, cast on 43 (45, 49, 51, 55) sts.

Beg with a RS row, work in K1, p1 Rib worked in rows until piece measures 2 in. (5 cm) from beg, end with a WS row.

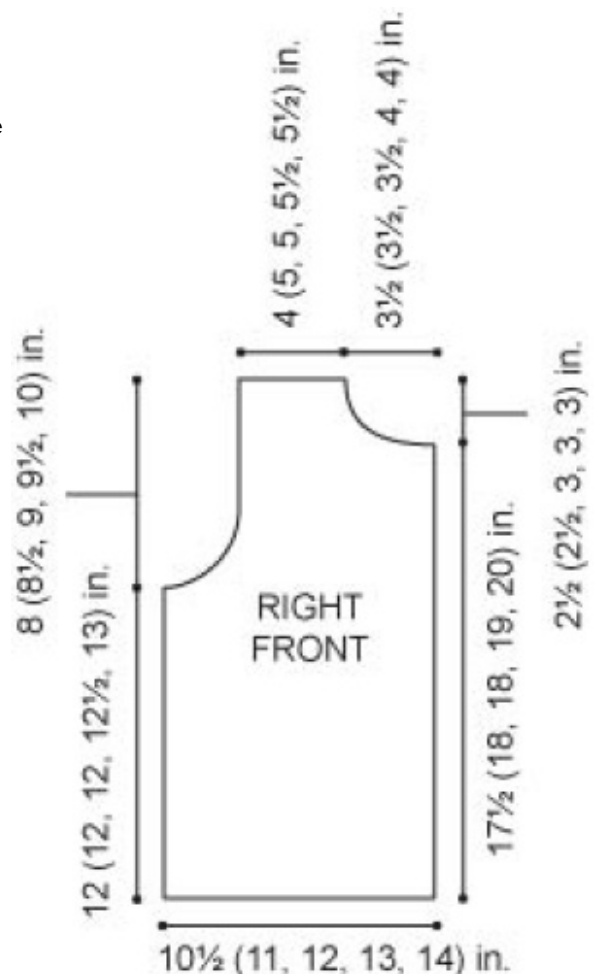
Next (Increase) Row (RS): K2, (p1, k1) 8 (8, 9, 9, 10) times, p5, k2, M1, k3, p5, k10 (12, 14, 16, 18) - 44 (46, 50, 52, 56) sts at the end of this row.

Next Row: P10 (12, 14, 16, 18), k5, p6, k5, (p1, k1) 8 (8, 9, 9, 10) times, p2.

Next Row: K2, (p1, k1) 8 (8, 9, 9, 10) times, work Row 1 of Cable Panel over next 16 sts, k10 (12, 14, 16, 18).

Next Row: P10 (12, 14, 16, 18), k5, p6, k5, (p1, k1) 8 (8, 9, 9, 10) times, p2.

Next Row: K2, (p1, k1) 8 (8, 9, 9, 10) times, work next row of



Cable Panel over next 16 sts, k10 (12, 14, 16, 18).
Rep last 2 rows until piece measures 12 (12, 12, 12 1/2, 13) in.
(30.5 (30.5, 30.5, 32, 33) cm) from beg, end with a RS row.

Shape Armhole

Bind off 4 (5, 5, 6, 7) sts at beg of next WS row.
Bind off 3 sts at beg of next 0 (0, 0, 0, 1) WS row(s).
Bind off 2 sts at beg of next 1 (1, 1, 2, 1) WS row(s).
Bind off 1 st at beg of next 4 (4, 5, 5, 6) WS rows - 34 (35, 38, 37, 38) sts rem.
Work even in cable pattern as established until armhole measures 5 1/2 (6, 6, 6 1/2, 7) in. (14 (15, 15, 16.5, 18) cm), end with a WS row.

Shape Neck

Bind off 5 sts at beg of next RS row.
Bind off 3 sts at beg of next RS row.
Bind off 1 st at beg of next 4 (3, 5, 3, 4) RS rows - 22 (24, 25, 26, 26) sts rem.
Work even in cable pattern as established until armhole measures 8 (8 1/2, 9, 9 1/2, 10) in. (20.5 (21.5, 23, 24, 25.5) cm).
Bind off.

HOOD

Beg at front edge with straight needles, cast on 105 (111, 115, 121, 125) sts.
Beg with a RS row, work in K1, p1 Rib worked in rows for 5 rows.
Change to St st (k on RS, p on WS), and work until piece measures 2 in. (5 cm) from beg, end with a WS row.

Shape Neck Edge of Hood

Next (Decrease) Row: K2tog, k to last 2 sts, ssk - 103 (109, 113, 119, 123) sts at the end of this row.

Next Row: Purl.

Rep Decrease Row - 101 (107, 111, 117, 121) sts at the end of this row.

Rep last 2 rows 1 (3, 3, 4, 4) more times - 99 (101, 105, 109, 113) sts rem.

Work even in St st for 2 rows.

Next (Decrease) Row (WS): Ssp, p to last 2 sts, p2tog - 97 (99, 103, 107, 111) sts at the end of this row.

Work even in St st for 2 rows.

Next (Decrease) Row: K2tog, k to last 2 sts, ssk - 95 (97, 101, 105, 109) sts at the end of this row.

Rep last 6 rows until 93 (93, 97, 99, 103) sts rem.

Work even in St st until piece measures 7 (8 1/2, 9, 9 1/2, 9 1/2) in. (18 (21.5, 23, 24, 24) cm), end with a WS row.

Shape Back

Bind off 10 (10, 10, 11, 12) sts at beg of next 2 rows.

Bind off 4 sts at beg of next 2 rows - 65 (65, 69, 69, 71) sts rem.

Next Row (RS): Bind off 3 sts, k29 (29, 31, 31, 32), join a 2nd skein of yarn and bind off 1 st for center back of hood, k to end of row.

Work both sides at once with separate balls of yarn.

Next Row (WS): Bind off 3 sts, p to center; p to end of row - 29 (29, 31, 31, 32) sts rem each side.

Next Row: Bind off 3 sts, k to center; bind off 1 st, k to end of row.

Next Row: Bind off 3 sts, p to center; bind off 1 st, p to end of row - 25 (25, 27, 27, 28) sts rem each side.

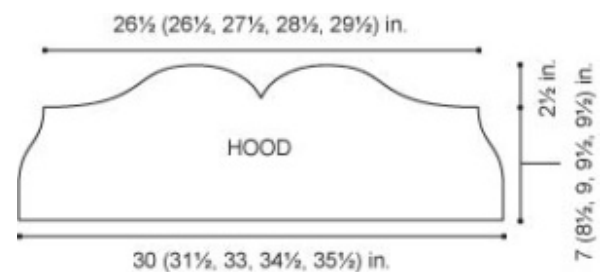
Next Row: Bind off 4 sts, k to center; bind off 1 st, k to end of row.

Next Row: Bind off 4 sts, p to center; bind off 1 st, p to end of row - 20 (20, 22, 22, 23) sts rem each side.

Next Row: Bind off 4 sts, k to center; bind off 2 sts, k to end of row.

Next Row: Bind off 4 sts, p to center; bind off 2 sts, p to end of row - 14 (14, 16, 16, 17) sts rem each side.

Bind off.



FINISHING

Sew shoulder and side seams. Fold Hood and sew back seam. Sew neck edge of Hood to neck edge of Vest.

Armhole Edging

From RS with double pointed needles, pick up and k78 (82, 86, 90, 94) sts evenly spaced around armhole. Place marker for beg of rnd. Join by working the first st on left hand needle with the working yarn from the right hand needle.

Work 5 rnds of K1, p1 Rib worked in rnds.

Bind off in rib.

Work edging around opposite armhole.

Weave in ends.

ABBREVIATIONS / REFERENCES	
Click for explanation and illustration	
beg = begin(s)(ning)	k = knit
k2tog = knit 2 together	p = purl
p2tog = purl 2 together	rem = remain(s)(ing)
rep = repeat(s)(ing)	rnd(s) = round(s)
RS = right side	St st = Stockinette stitch
st(s) = stitch(es)	tog = together
WS = wrong side	

Learn to knit instructions: <http://learnToKnit.LionBrand.com>

Every effort has been made to have the knitting and crochet instructions accurate and complete. We cannot be responsible for variance of individual knitters and crocheters, human errors, or typographical mistakes.

**LB Collection® Organic Wool (Article #481). 100% Organic Wool; package size: 3.50oz/100.00 gr. (185yds/170m) pull skeins*



We want your project to be a success! If you need help with this or any other Lion Brand pattern, e-mail support is available 7 days per week. Just click [here](#) to explain your problem and someone will help you!

For thousands of free patterns, visit our website www.LionBrand.com

To order visit our website www.lionbrand.com or call: (800) 258-YARN (9276) any time!

Copyright ©1998-2011 Lion Brand Yarn Company, all rights reserved. No pattern or other material may be reproduced -- mechanically, electronically, or by any other means, including photocopying -- without written permission of Lion Brand Yarn Company.