



Free Knitting Pattern
Lion Brand® LB Collection® Cashmere
Cap Sleeve Top
Pattern Number: L0183AD



Free Knitting Pattern from Lion Brand Yarn

Lion Brand® LB Collection® Cashmere

Cap Sleeve Top

Pattern Number: L0183AD

SKILL LEVEL: Experienced

SIZE: Small, Medium, Large, 1X, 2X

Finished Bust 34 (38, 42, 46, 50) in. (86.5 (96.5, 106.5, 117, 127) cm)

Finished Length 22 1/2 (23 1/2, 24 1/2, 25 1/2, 26 1/2) in. (57 (59.5, 62, 65, 67.5) cm)

Note: Pattern is written for smallest size with changes for larger sizes in parentheses. When only one number is given, it applies to all sizes. To follow pattern more easily, circle all numbers pertaining to your size before beginning.

CORRECTIONS: None as of Oct 21, 2013. To check for later updates, click [here](#).

MATERIALS

- 483-124 [Lion Brand LB Collection Cashmere Yarn: Toffee](#)

8 9, 11, 12, 14 Balls

**LB Collection® Cashmere (Article #483). 100% Cashmere; package size: 0.88oz/25.00 gr. (82yds/75m) pull skeins*

- [Lion Brand Split Ring Stitch Markers](#)
- [Lion Brand Crochet Hook - Size H-8 \(5 mm\)](#)

- Additional Materials

Circular knitting needle size 6 (4 mm), 29 in. (74 cm) long

One button, 5/8 in. (16 mm) diameter



GAUGE:

22 sts + 30 rows = 4 in. (10 cm) in St st (k on RS, p on WS)

BE SURE TO CHECK YOUR GAUGE. When you match the gauge in a pattern, your project will be the size specified in the pattern and the materials specified in the pattern will be sufficient. If it takes you fewer stitches and rows to make a 4 in. [10 cm] square, try using a smaller size hook or needles; if more stitches and rows, try a larger size hook or needles.

STITCH EXPLANATION:

M1 (make 1) An increase worked by lifting horizontal thread lying between needles and placing it onto left needle.

Knit this new stitch through the back loop - 1 st increased.

ssk (slip, slip, knit) Slip next 2 sts as if to knit, one at a time, to right needle; insert left needle into fronts of these 2 sts and knit them tog - 1 st decreased.

PATTERN STITCH

Moss st (multiple of 2 sts + 1)

Row 1 (RS): P1, *k1, p1; rep from * to end of row.

Row 2 (WS): K1, *p1, k1; rep from * to end of row.

Row 3: K1, *p1, k1; rep from * to end of row.

Row 4: P1, *k1, p1; rep from * to end of row.

Rep Rows 1-4 for Moss st.

NOTES:

1. Back, Front and Sleeves are worked back and forth in rows on circular needle, as if working on straight needles.
2. Back and Front each begin with a Moss st border for lower border.
3. Each Sleeve is assembled from two halves that are worked separately, then knotted and sewn tog.
4. Edging at back neck slit is crocheted in sl st, buttonloop is a crocheted chain.

BACK

Cast on 93 (105, 115, 127, 137) sts.

Work in Moss st until piece measures 1 in. (2.5 cm) from beg, end with a WS row. **Note:** End with a WS row means that the last row you work should be a WS row, and the next row that you are ready to work will be a RS row.

Next (Dec) Row (RS): K2, ssk, knit across to last 4 sts, k2tog, k2 - 91 (103, 113, 125, 135) sts at the end of this row.

Work even (without increasing or decreasing) in St st (k on RS, p on WS) for 7 rows.

Next (Dec) Row: K2, ssk, knit across to last 4 sts, k2tog, k2 - 89 (101, 111, 123, 133) sts at the end of this row.

Rep last 8 rows 3 more times - 83 (95, 105, 117, 127) sts when all decs complete.

Work even in St st until piece measures 7 in. (18 cm) from beg, end with a WS row.

Next (Inc) Row: K2, M1, knit across to last 2 sts, M1, k2 - 85 (97, 107, 119, 129) sts at the end of this row.

Work even in St st for 9 rows.

Next (Inc) Row: K2, M1, knit across to last 2 sts, M1, k2 - 87 (99, 109, 121, 131) sts at the end of this row.

Rep last 10 rows 3 more times - 93 (105, 115, 127, 137) sts when all incs complete.

Work even in St st until piece measures 14 (14 1/2, 15, 15 1/2, 16) in. (35.5 (37, 38, 39.5, 40.5) cm), end with a WS row.

Shape Armholes

Bind off 5 (6, 7, 8, 9) sts at beg of next 2 rows - 83 (93, 101, 111, 119) sts when bind-offs have been completed.

Bind off 2 sts at beg of next 0 (0, 0, 2, 4) rows - 83 (93, 101, 107, 111) sts when bind-offs have been completed.

Dec 1 st at each end of every other row 5 (5, 7, 8, 9) times - 73 (83, 87, 91, 93) sts when all decs have been completed.

Work even (without increasing or decreasing) in St st until armhole measures 6 (6 1/2, 7, 7 1/2, 8) in. (15 (16.5, 18, 19, 20.5) cm), end with a WS row.

Divide for Back Slit

Next Row (RS): K36 (41, 43, 45, 46), join a 2nd strand of yarn and bind off 1 st for back slit, knit to end of row - 36 (41, 43, 45, 46) sts on each side of neck slit.

Work both sides at once with separate strands of yarn.

Bind off 2 sts at each side of slit once, then dec 1 sts at each side of slit once - 33 (38, 40, 42, 43) sts each side.

Work even in St st for 4 rows.

Inc 1 st at each side of neck slit on every other row twice - 35 (40, 42, 44, 45) sts each side.

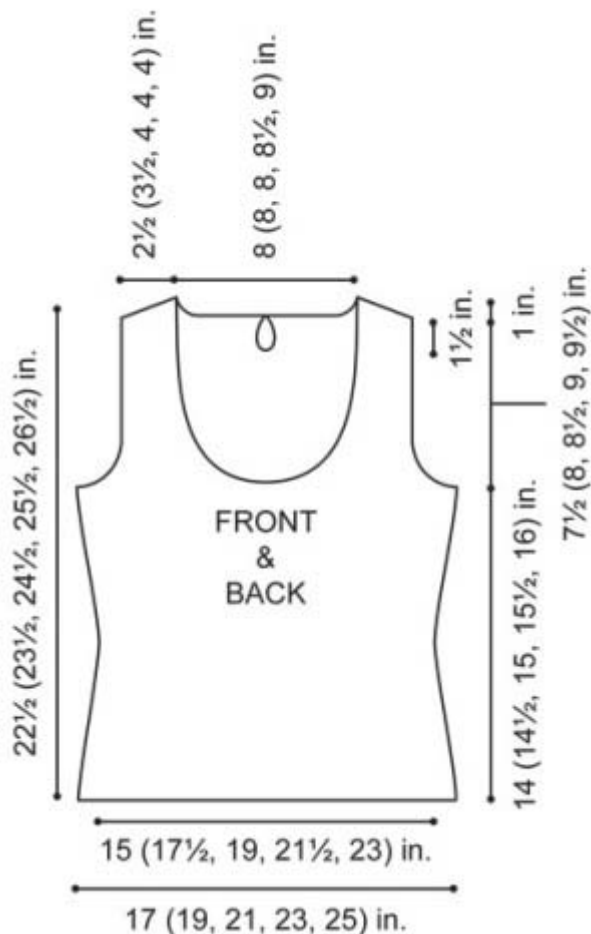
Bind off 21 (21, 21, 22, 23) sts at each side of slit - 14 (19, 21, 22, 22) sts each side.

Shape Shoulders Continue to work each side separately.

Bind off 5 (6, 7, 7, 7) sts at beg of next 4 rows.

Bind off 4 (7, 7, 8, 8) sts at beg of next 2 rows.

FRONT



Work same as Back until Front measures same length as Back to armhole shaping, end with a WS row.

Shape Armholes and Neck

Next Row: Bind off 5 (6, 7, 8, 9) sts, k 50 (55, 59, 65, 70) sts and place a marker, k to end of row.

Next Row: Bind off 5 (6, 7, 8, 9) sts, purl to marker, join a 2nd strand of yarn and bind off next 17 (17, 17, 19, 21) sts, purl to end of row - 33 (38, 42, 46, 49) sts each side.

Work both sides at once with separate strands of yarn.

Note: Armhole shaping and neck shaping are worked AT THE SAME TIME with separate strands of yarn. For the armhole shaping, you will dec 1 st at the beg of the next 10 (10, 14, 16, 18) rows total (both RS and WS) rows and AT THE SAME TIME, for the neck shaping you will dec 1 st at each side of neck on every RS row 14 (14, 14, 16, 18) times total.

When all neck and armhole decs have been completed, there will be 14 (19, 21, 22, 22) sts rem on each side.

Continuing to work each side separately, work even in St st until armhole measures 7 1/2 (8, 8 1/2, 9, 9 1/2) in. (19 (20.5, 21.5, 23, 24) cm).

Shape Shoulders

Bind off 5 (6, 7, 7, 7) sts at beg of next 4 rows.

Bind off 4 (7, 7, 8, 8) sts at beg of next 2 rows.

SLEEVES (make 2)

Note: Each Sleeve is made in halves. > The halves are knotted, then seamed tog to make each Sleeve.

Half (make 4 - 2 for each Sleeve)

Cast on 16 (16, 18, 18, 20) sts.

Work even in St st for 6 1/2 (7, 7 1/2, 8 1/2, 9) in. (16.5 (18, 19, 21.5, 23) cm), end with a WS row.

Next (Inc) Row: (K2, M1) 7 (7, 8, 8, 9) times, k2 - 23 (23, 26, 26, 29) sts at the end of this row.

Work even in St st for 3 rows.

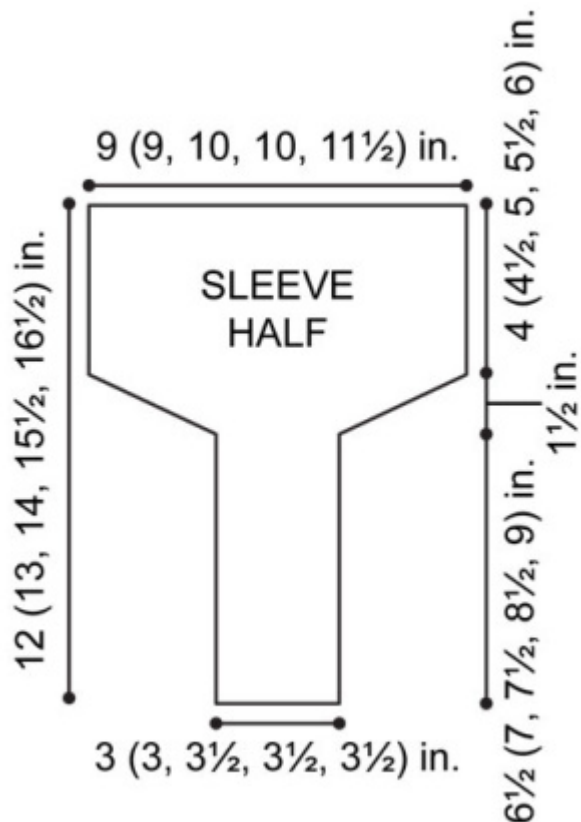
Next (Inc) Row: (K2, M1) 11 (11, 12, 12, 14) times, k1 (1, 2, 2, 1) - 34 (34, 38, 38, 43) sts at the end of this row.

Work even in St st for 3 rows.

Next (Inc) Row: (K2, M1) 16 (16, 18, 18, 21) times, k2 (2, 2, 2, 1) - 50 (50, 56, 56, 64) sts at the end of this row.

Work even in St st for 4 (4 1/2, 5, 5 1/2, 6) in. (10 (11.5, 12.5, 14, 15) cm).

Bind off.



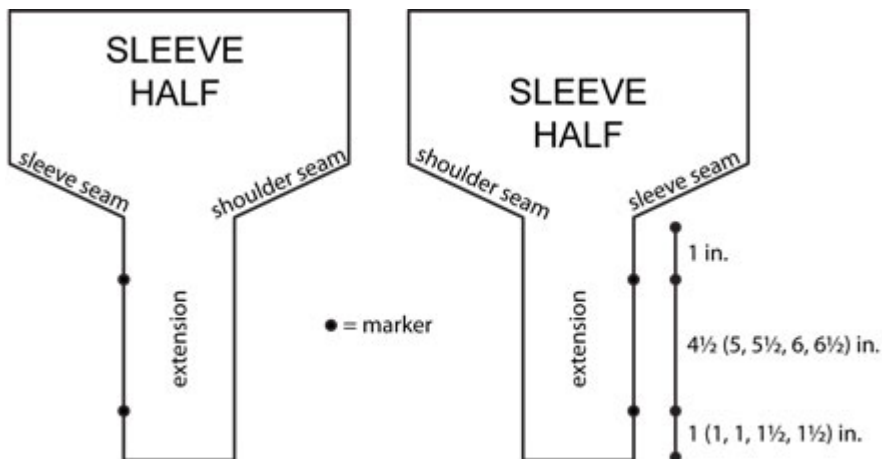
FINISHING

Sew shoulder and side seams.

Sleeve Assembly

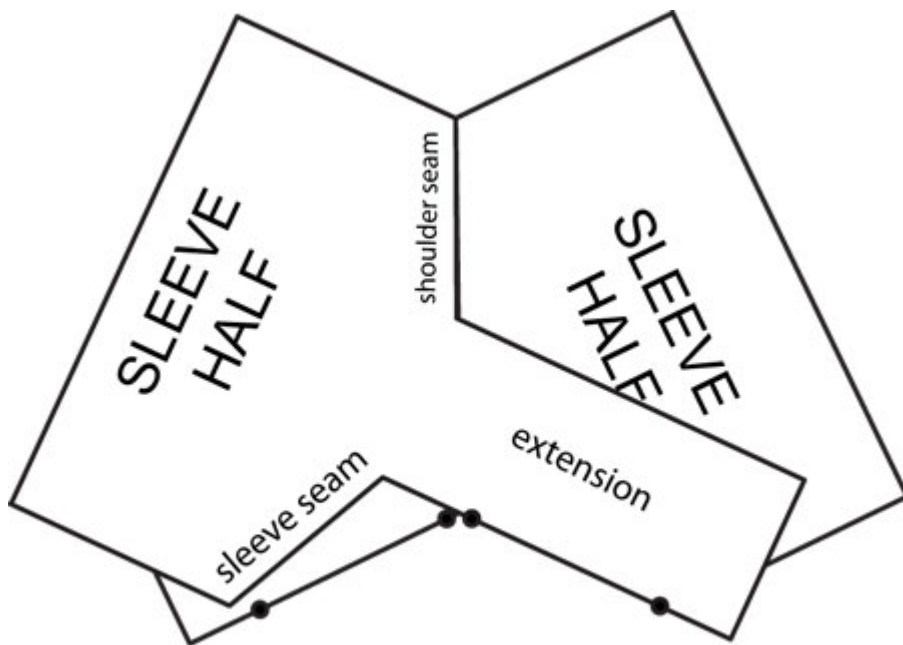
Note: Refer to diagrams for assembly.

1. With RS facing, place two Sleeve halves side by side. Following Diagram 1, place markers on each Sleeve.



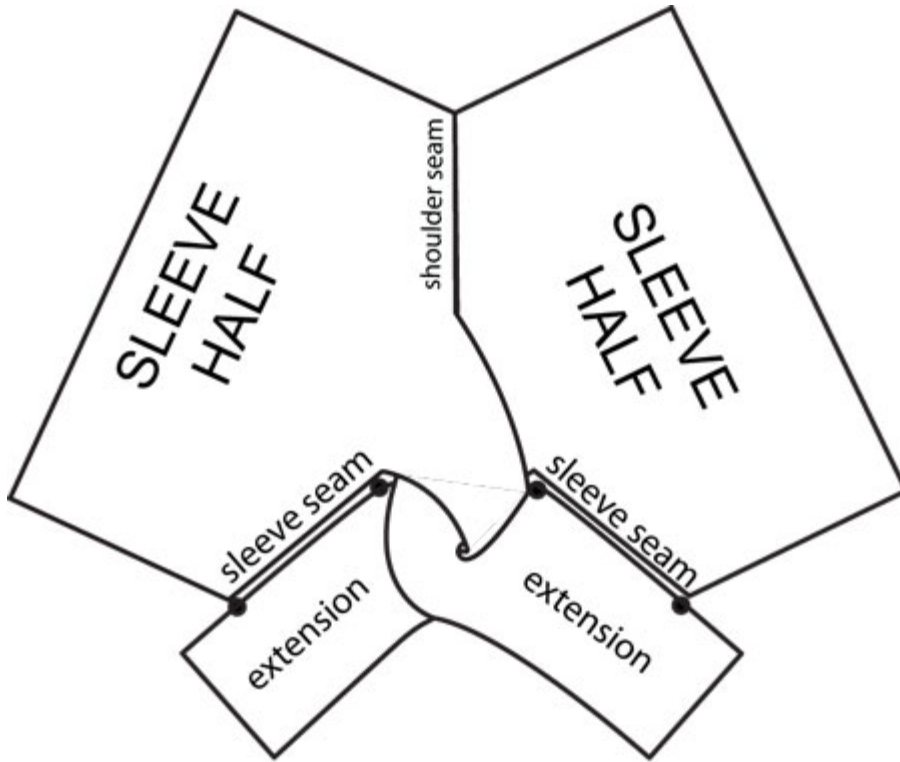
1. Place markers

2. Following Diagram 2, sew shoulder.



2. Sew shoulder seam

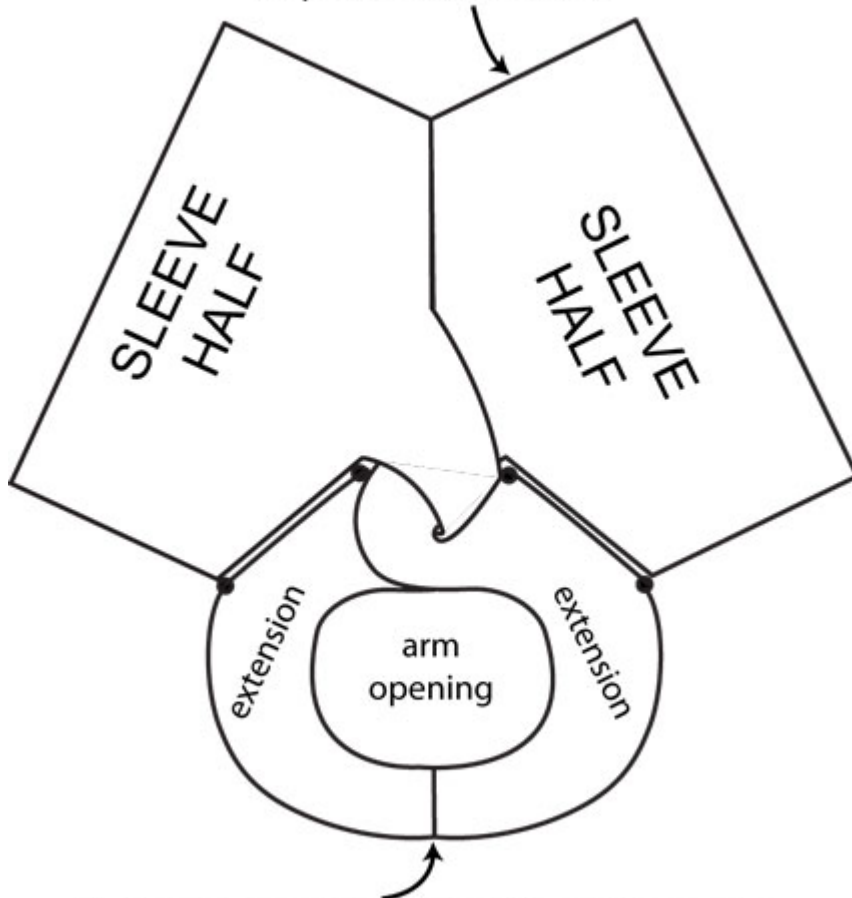
3. Tie knot as follows: Cross one extension over the other then, following Diagram 3, cross the extensions again. Seam Sleeves between markers.



3. Tie knot and sew seams between markers

4. Following Diagram 4, seam ends of extensions to form a loop.

Sleeve is sewn into armhole all along this outer edge. As you sew, ease sleeve into a rounded shape to match armhole



4. Sew short ends of extensions together.

5. Sew Sleeve to armhole of Top.
Rep for other Sleeve.

Neckband

With RS facing and circular needle, beg at left side of back slit (**Note:** The left side refers to the left side of the Back, as the Top is worn), pick up and k25 (25, 25, 26, 27) sts across left Back neck edge, 56 (58, 60, 62, 64) sts along neck edge of Front, 17 (17, 17, 19, 21) sts across bound-off sts at center Front, 56 (58, 60, 62, 64) sts along remaining neck edge of front, then 25 (25, 25, 26, 27) sts across right Back neck edge - 179 (183, 187, 195, 203) sts total.

Working back and forth on circular needle as if working on straight needles, work in Moss St for 6 rows.

Bind off loosely in pattern.

With RS facing and crochet hook, join yarn with sl st at top right corner of back slit. Work sl st evenly spaced around slit to left top edge, ch 5, sl st just below Moss St neckband for button loop. Fasten off.

Sew button to right Back opposite button loop.

Weave in ends.

ABBREVIATIONS / REFERENCES

Click for explanation and illustration

<u>beg = begin(s)(ning)</u>	<u>ch(s) = chain(s)</u>
<u>dec = decreas(e)(s)(ing)</u>	<u>inc = increas(e)(s)(ing)</u>
<u>k = knit</u>	<u>k2tog = knit 2 together</u>
<u>p = purl</u>	<u>Pm = place marker</u>
<u>rem = remain(s)(ing)</u>	<u>rep = repeat(s)(ing)</u>
<u>RS = right side</u>	<u>sl st = slip stitch</u>
<u>St st = Stockinette stitch</u>	<u>st(s) = stitch(es)</u>
<u>tog = together</u>	<u>WS = wrong side</u>

Learn to knit instructions: <http://learnToKnit.LionBrand.com>

Every effort has been made to have the knitting and crochet instructions accurate and complete. We cannot be responsible for variance of individual knitters and crocheters, human errors, or typographical mistakes.

We want your project to be a success! If you need help with this or any other Lion Brand pattern, e-mail support is available 7 days per week. Just click [here](#) to explain your problem and someone will help you!

For thousands of free patterns, visit our website www.LionBrand.com

To order visit our website www.lionbrand.com or call: (800) 258-YARN (9276) any time!

**When in New York City, visit the Lion Brand Yarn Studio where we have the largest selection of our yarns anywhere and over 100 classes and events monthly.
34 West 15th Street, NY, NY 10011**

Copyright ©1998-2013 Lion Brand Yarn Company, all rights reserved. No pattern or other material may be reproduced -- mechanically, electronically, or by any other means, including photocopying -- without written permission of Lion Brand Yarn Company.