



**Free Knitting Pattern**  
**Lion Brand® Vanna's Choice®**  
**Patch Sampler Throw**  
Pattern Number: L0592



# Free Knitting Pattern from Lion Brand Yarn

## Lion Brand® Vanna's Choice®

### Patch Sampler Throw

Pattern Number: L0592

**SKILL LEVEL:** Intermediate

**SIZE:** One Size

About 45 x 54 in. (114.5 x 137 cm)

**CORRECTIONS:** (applied Apr 22, 2011)

#### SQUARE 1 (make 6)

~~Rows 17-64: Rep Rows 1-16 three times.~~

~~Rows 65-84: Rep Rows 1-10.~~

Rep Rows 1-16 until piece measures about 9 in. (23 cm) from beg.

Bind off.

#### SQUARE 2 (make 6)

~~Rows 17-64: Rep Rows 1-16 three times.~~

~~Rows 65-71: Rep Rows 1-7.~~

Rep Rows 1-16 until piece measures about 9 in. (23 cm) from beg.

Bind off.

#### SQUARE 3 (make 6)

~~Rows 21-60: Rep Rows 1-20 twice.~~

~~Rows 61-78: Rep Rows 1-18.~~

Rep Rows 1-20 until piece measures about 9 in. (23 cm) from beg.

Bind off.

#### SQUARE 4 (make 6)

~~Rows 9-64: Repeat Rows 1-8 seven times.~~

~~Rows 65-68: Rep Rows 1-4.~~

Rep Rows 1-8 until piece measures about 9 in. (23 cm) from beg.

Bind off.

#### SQUARE 5 (make 6)

~~Rows 17-64: Rep Rows 1-16 three times.~~

~~Rows 65-67: Rep Rows 1-3.~~

Rep Rows 1-16 until piece measures about 9 in. (23 cm) from beg.

Bind off.

#### MATERIALS

- 860-158 Lion Brand Vanna's Choice Yarn: Mustard  
3 Balls (A)
- 860-172 Lion Brand Vanna's Choice Yarn: Kelly Green  
3 Balls (B)
- 860-099 Lion Brand Vanna's Choice Yarn: Linen  
3 Balls (C)
- 860-109 Lion Brand Vanna's Choice Yarn: Colonial Blue  
3 Balls (D)
- 860-133 Lion Brand Vanna's Choice Yarn: Brick  
3 Balls (E)

- [Lion Brand Knitting Needles- Size 8 \[5 mm\]](#)
- [Lion Brand Cable Needles \(Set of 2\)](#)
- [Large-Eye Blunt Needles \(Set of 6\)](#)

#### GAUGE:

1 Square = about 9 x 9 in. (23 x 23 cm). BE SURE TO CHECK YOUR GAUGE. When you match the gauge in a pattern, your project will be the size specified in the pattern and the materials specified in the pattern will be sufficient. If it takes you less stitches and rows to make a 4 in. [10 cm] square, try using a smaller size hook or needles; if more stitches and rows, try a larger size hook or needles.

#### STITCH EXPLANATION:

**3/3 LC (3 over 3 left cross)** Slip 3 sts to cable needle and hold in front of work, k3, then k3 from cable needle.

**3/3 RC (3 over 3 right cross)** Slip 3 sts to cable needle and hold in back of work, k3, then k3 from cable needle.

**3/1 LPC (3 over 1 left purl cross):** Slip 3 sts to cable needle and hold in front of work, p1, then k3 from cable needle.

**3/1 RPC (3 over 1 right purl cross):** Slip 1 st to cable needle and hold in back of work, k3, then p1 from cable needle.

**skp** Slip 1 as if to knit, knit 1, pass slip stitch over knit stitch - 1 st decreased.

**sk2p** Slip 1 as if to knit, knit 2 together, pass slipped stitch over - 2 sts decreased.

**RT (Right Twist)** K2tog and leave on left needle, then insert right needle, go between the 2 sts and k the first st again.

**LT (Left Twist)** Knit the 2nd st on left needle through the back loop and leave on left needle. Then k2tog (the first and 2nd sts on left needle) through back loops.

#### NOTES:

1. Six Squares are worked in each of 5 colors and 5 patterns, for a total of 30 Squares.
2. Squares are sewed together to make Throw.
3. The Throw is designed without a border.
4. Any small differences in size of Squares can be eased in when sewing Squares together.

#### SQUARE 1 (make 6)

**Note:** First and last 2 sts are always worked in Garter st (k every row).

#### Cables and Braid (over 54 sts)

With A, cast on 54 sts.

**Row 1 (WS):** K2, p1, k6, p6, k6, p12, k6, p6, k6, p1, k2.

**Row 2:** K2, k1 tbl, p6, 3/3 LC, p6, k3, 3/3 LC, k3, p6, 3/3 RC, p6, k1 tbl, k2.

**Row 3 and all following WS rows:** K2, knit the k sts and purl the p sts to last 2 sts, k2.

**Row 4:** K2, k1 tbl, p5, 3/1 RPC, 3/1 LPC, p5, k12, p5, 3/1 RPC, 3/1 LPC, p5, k1 tbl, k2.

**Row 6:** K2, k1 tbl, p4, 3/1 RPC, p2, 3/1 LPC, p4, [3/3 RC] twice, p4, 3/1 RPC, p2, 3/1 LPC, p4, k1 tbl, k2.

**Row 8:** K2, k1 tbl, p3, 3/1 RPC, p4, 3/1 LPC, p3, k12, p3, 3/1 RPC, p4, 3/1 LPC, p3, k1 tbl, k2.

**Row 10:** K2, k1 tbl, p3, k3, p6, k3, p3, k3, 3/3 LC, k3, p3, k3, p6, k3, p3, k1 tbl, k2.

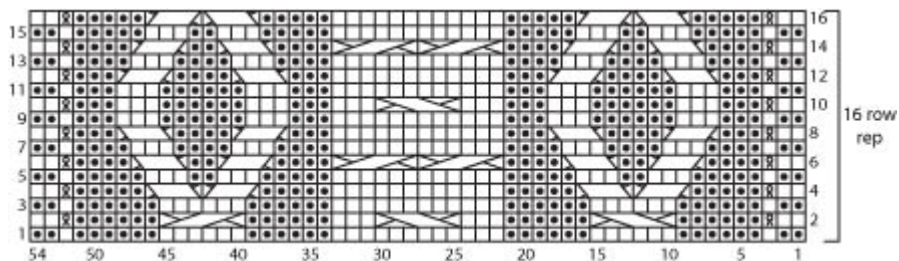
**Row 12:** K2, k1 tbl, p3, 3/1 LPC, p4, 3/1 RPC, p3, k12, p3, 3/1 LPC, p4, 3/1 RPC, p3, k1 tbl, k2.

**Row 14:** K2, k1 tbl, p4, 3/1 LPC, p2, 3/1 RPC, p4, [3/3 RC] twice, p4, 3/1 LPC, p2, 3/1 RPC, p4, k1 tbl, k2.

**Row 16:** K2, k1 tbl, p5, 3/1 LPC, 3/1 RPC, p5, k12, p5, 3/1 LPC, 3/1 RPC, p5, k1 tbl, k2.

Rep Rows 1–16 until piece measures about 9 in. (23 cm) from beg.

Bind off.



- k on RS, p on WS
- ▣ p on RS, k on WS
- ⊙ yarn over
- ⊠ k tbl on RS, p tbl on WS
- ⊞ k2tog
- ⊟ skp: sl 1 as if to knit, k1, pass sl st over k st
- ⊠ sk2p: sl 1 as if to knit, k2tog, pass sl st over k2tog
- ⊞ RT: K2tog and leave on left needle, then with right needle, go between the 2 sts and k the first st again.
- ⊞ LT: Knit 2nd st on left needle through the back loop and leave on left needle. Then knit both the first and 2nd sts together through the back loop.
- ⊞ 3/1 RPC: Sl 1 st onto cable needle and hold in back, k3, p1 from cable needle
- ⊞ 3/1 LPC: Sl 3 sts onto cable needle and hold in front, p1, k3 from cable needle
- ⊞ 3/3 RC: Sl 3 sts onto cable needle and hold in back, k3, k3 from cable needle
- ⊞ 3/3 LC: Sl 3 sts onto cable needle and hold in front, k3, k3 from cable needle

## SQUARE 2 (make 6)

### Leaf Pattern (multiple of 10 sts + 1)

With B, cast on 41 sts.

**Row 1 (RS):** K2tog, k3, \*yo, k1, yo, k3, sk2p, k3; rep from \* to last 6 sts, yo, k1, yo, k3, skp.

**Row 2 and all WS rows:** Purl.

**Row 3:** K2tog, k2, \*yo, k3, yo, k2, sk2p, k2; rep from \* to last 7 sts, yo, k3, yo, k2, skp.

**Row 5:** K2tog, k1, \*yo, k5, yo, k1, sk2p, k1; rep from \* to last 8 sts, yo, k5, yo, k1, skp.

**Row 7:** K2tog, \*yo, k7, yo, sk2p; rep from \* to last 9 sts, yo, k7, yo, skp.

**Row 9:** K1, \*yo, k3, sk2p, k3, yo, k1; rep from \* to end of row.

**Row 11:** K2, \*yo, k2, sk2p, k2, yo, k3; rep from \* to last 9 sts, yo, k2, sk2p, k2, yo, k2.

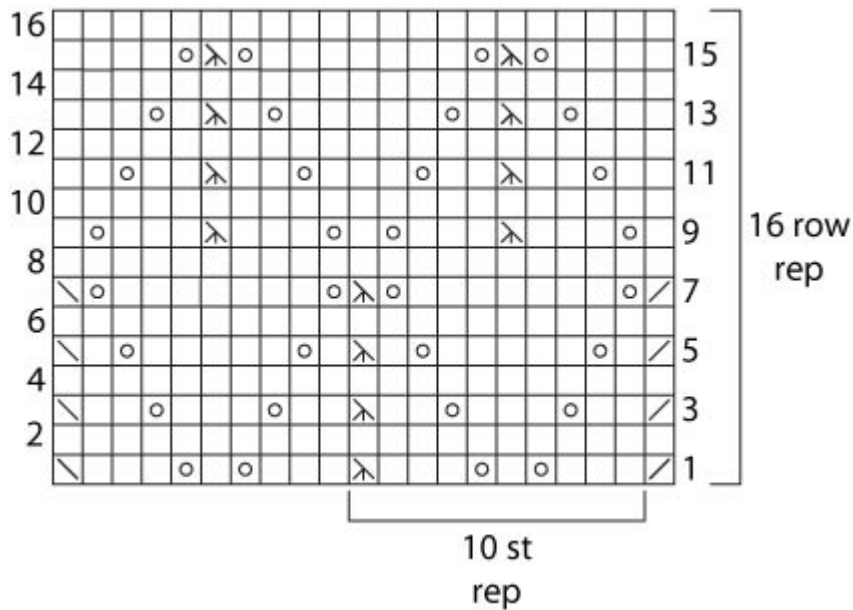
**Row 13:** K3, \*yo, k1, sk2p, k1, yo, k5; rep from \* to last 8 sts, yo, k1, sk2p, k1, yo, k3.

**Row 15:** K4, \*yo, sk2p, yo, k7; rep from \* to last 7 sts, yo, sk2p, yo, k4.

**Row 16:** Rep Row 2.

Rep Rows 1–16 until piece measures about 9 in. (23 cm) from beg.

Bind off.



### SQUARE 3 (make 6)

#### Wave Pattern (multiple of 9 sts + 8)

With C, cast on 44 sts.

**Row 1 and all WS Rows:** Purl.

**Row 2:** P2, \*k4, LT, p3; rep from \* to last 6 sts, k4, p2.

**Row 4:** P2, \*k4, p1, LT, p2; rep from \* to last 6 sts, k4, p2.

**Row 6:** P2, \*k4, p2, LT, p1; rep from \* to last 6 sts, k4, p2.

**Row 8:** P2, \*k4, p3, LT; rep from \* to last 6 sts, k4, p2.

**Row 10:** P2, k4, \*p4, k5; rep from \* to last 2 sts, p2.

**Row 12:** P2, \*k4, p3, RT; rep from \* to last 6 sts, k4, p2.

**Row 14:** P2, \*k4, p2, RT, p1; rep from \* to last 6 sts, k4, p2.

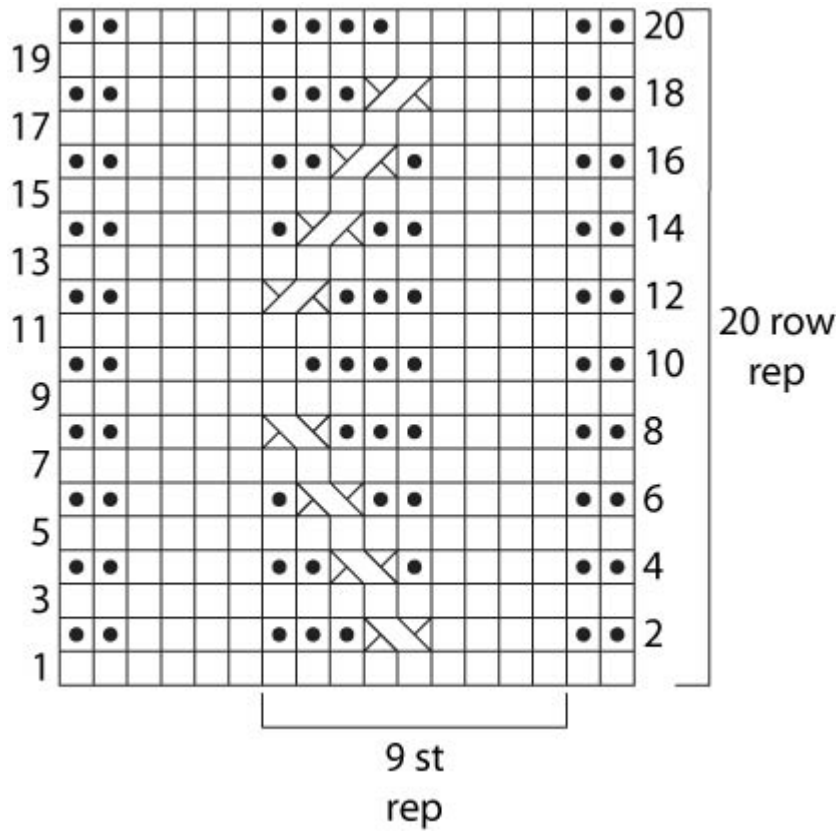
**Row 16:** P2, \*k4, p1, RT, p2; rep from \* to last 6 sts, k4, p2.

**Row 18:** P2, \*k4, RT, p3; rep from \* to last 6 sts, k4, p2.

**Row 20:** P2, \*k5, p4; rep from \* to last 6 sts, k4, p2.

Rep Rows 1–20 until piece measures about 9 in. (23 cm) from beg.

Bind off.



**SQUARE 4 (make 6)**

**Basketweave Pattern (multiple of 8 sts + 3)**

With D, cast on 43 sts.

**Row 1 (WS):** Purl.

**Row 2:** K3, \*p5, k3; rep from \* to end of row.

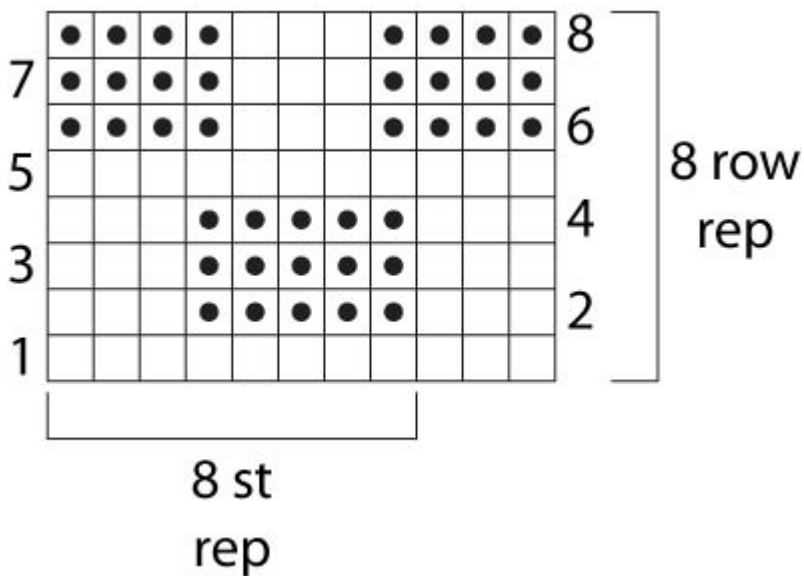
**Rows 3 and 4:** Knit the k sts and purl the p sts to end of row.

**Row 5:** Purl.

**Row 6:** P4, \*k3, p5; rep from \* to last 7 sts, k3, p4.

**Rows 7 and 8:** Rep Rows 3 and 4.

Rep Rows 1–8 until piece measures about 9 in. (23 cm) from beg.  
Bind off.



**SQUARE 5 (make 6)**

**Diagonal Rib Pattern (multiple of 4 sts + 1)**

With E, cast on 49 sts.

**Row 1 (RS):** P1, \*k2, p2; rep from \* to end of row.

**Rows 2-4:** Knit the k sts and purl the p sts to end of row.

**Row 5:** \*P2, k2; rep from \* to last st, p1.

**Rows 6-8:** Knit the k sts and purl the p sts to end of row.

**Row 9:** K1, \*p2, k2; rep from \* to end of row.

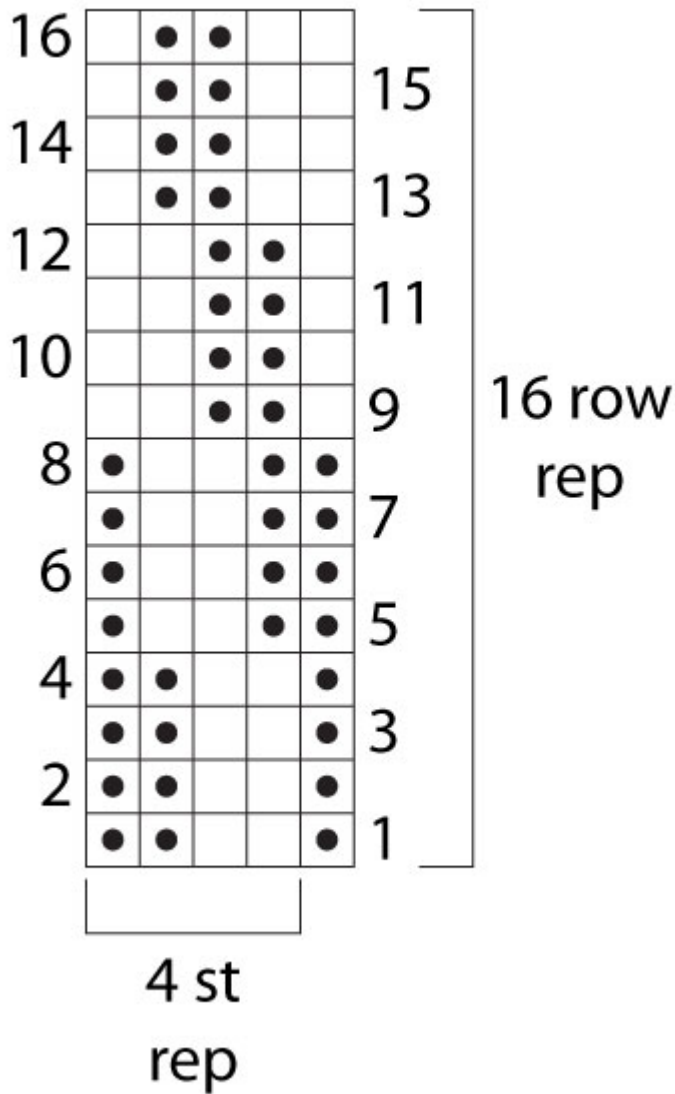
**Rows 10-12:** Knit the k sts and purl the p sts to end of row.

**Row 13:** \*K2, p2; rep from \* to last st, k1.

**Rows 14-16:** Knit the k sts and purl the p sts to end of row.

Rep Rows 1–16 until piece measures about 9 in. (23 cm) from beg.

Bind off.



**FINISHING**

Following Diagram, sew Squares into 5 strips of 6 Squares each. Sew strips together to make Throw. Weave in ends.

A	B	C	D	E
B	C	D	E	A
C	D	E	A	B
D	E	A	B	C
E	A	B	C	D
A	B	C	D	E

A: #158 Mustard  
 B: #172 Kelly Green  
 C: #099 Linen  
 D: #109 Colonial Blue  
 E: #133 Brick

<b>ABBREVIATIONS / REFERENCES</b>	
Click for explanation and illustration	
<u>k = knit</u>	<u>k2tog = knit 2 together</u>
<u>p = purl</u>	<u>rep = repeat(s)(ing)</u>
<u>RS = right side</u>	<u>st(s) = stitch(es)</u>
<u>tbl = through the back loop</u>	<u>WS = wrong side</u>
<u>yo = yarn over</u>	

Learn to knit instructions: <http://learnToKnit.LionBrand.com>

Every effort has been made to have the knitting and crochet instructions accurate and complete. We cannot be responsible for variance of individual knitters and crocheters, human errors, or typographical mistakes.

\**Vanna's Choice*<sup>®</sup> (Article #860) is a 4-ply worsted-weight 100% acrylic yarn. • Solids in 3.5 oz/100g (170 yd/156 m) balls • Prints in 3 oz/85 g (145 yd/133 m) balls 100% acrylic



support is available 7 days per week. Just click [here](#) to explain your problem and someone will help you!

**For thousands of free patterns, visit our website [www.LionBrand.com](http://www.LionBrand.com)  
To order visit our website [www.lionbrand.com](http://www.lionbrand.com) or call: (800) 258-YARN (9276) any time!**

Copyright ©1998-2009 Lion Brand Yarn Company, all rights reserved. No pattern or other material may be reproduced -- mechanically, electronically, or by any other means, including photocopying -- without written permission of Lion Brand Yarn Company.