



**Free Knitting Pattern**  
**Lion Brand® Wool-Ease® - Amazing®**  
**Colorful Fair Isle Throw**  
Pattern Number: L20285



# Free Knitting Pattern from Lion Brand Yarn

## Lion Brand® Wool-Ease® - Amazing®

### Colorful Fair Isle Throw

Pattern Number: L20285

**SKILL LEVEL:** Intermediate

**SIZE:** One Size

About 40 x 48 in. (101.5 x 122 cm)

**CORRECTIONS:** None as of Sep 22, 2012. To check for later updates, click [here](#).

#### MATERIALS

- 620-114 Lion Brand Wool-Ease Yarn: Denim  
6 Balls (A)
- 620-123 Lion Brand Wool-Ease Yarn: Seaspray  
2 Balls (B)
- 825-203 Lion Brand Amazing™ Yarn: Wildflowers  
2 Balls (C)
- 825-206 Lion Brand Amazing™ Yarn: Arcadia  
1 Ball (D)
- Clover Bamboo Circular Knitting Needles 29 inches Size 8
- Lion Brand Large-Eye Blunt Needles (Set of 6)

#### GAUGE:

18 sts + 21 rows = 4 in. (10 cm) in St st (k on RS, p on WS).

BE SURE TO CHECK YOUR GAUGE. When you match the gauge in a pattern, your project will be the size specified in the pattern and the materials specified in the pattern will be sufficient. If it takes you fewer stitches and rows to make a 4 in. [10 cm] square, try using a smaller size hook or needles; if more stitches and rows, try a larger size hook or needles.

#### STITCH EXPLANATION:

**kfb (knit in front and back)** Knit next st without removing it from left needle, then k through back of same st – 1 st increased.

#### PATTERN STITCH

**Seed st (multiple of 2 sts + 1 additional st)**

**Row 1:** \*K1, p1; rep from \* to last st, k1.

**Row 2:** K the purl sts and p the knit sts.

Rep Row 2 for Seed st.

#### NOTES:

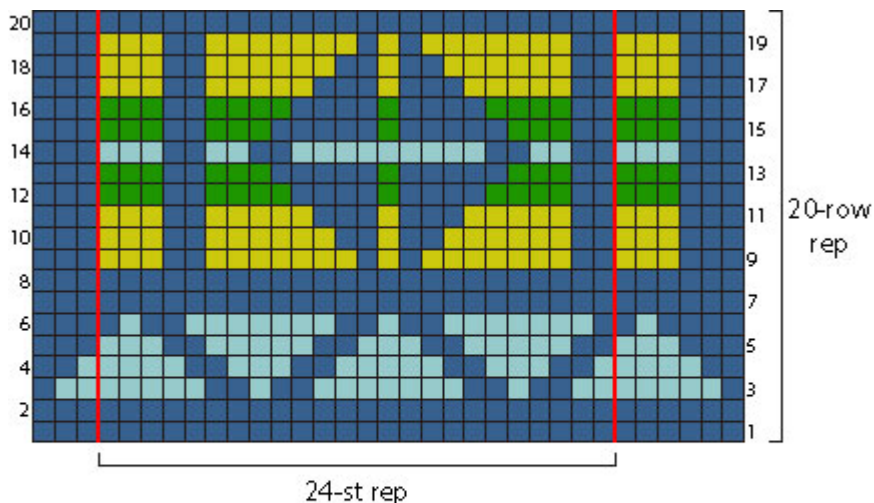
1. Throw is worked in Fair Isle colorwork using 2 colors per row. Carry color not in use across WS of work.
2. Fair Isle patterns can be worked from written instructions or by following the Chart. Work Chart in

St st and read RS rows of Chart from right to left. Read WS rows from left to right.

3. If carrying color across 5 or more sts, twist yarns on WS to prevent overly long strands (floats) on the WS.

4. Throw is worked on a circular needle to accommodate the large number of sts. Work back and forth on circular needle as if working on straight needles.

5. Top and bottom Seed st borders are knit with Throw. Side borders are added after Throw has been completed.



- Wool-Ease: #114 Denim (A)
- Wool-Ease: #123 Seafoam (B)
- Amazing: #203 Wildflowers (C)
- Amazing: #206 Arcadia (D)

## THROW

With A, cast on 175 sts.

### Border

Work back and forth on circular needle, as if working on straight needles.

Work in Seed st for 2 in. (5 cm).

**Increase Row:** K1, kfb, work in Seed st to last 2 sts, kfb, k1 - 177 sts.

### Begin Fair Isle Pattern

**Row 1 (RS):** With A, knit.

**Row 2:** With A, purl.

**Row 3:** With A, k1; with B, k7; \*with A, k2; with B, k1; with A, k2; with B, k7; rep from \* to last st, with A, k1.

**Row 4:** With A, p2; with B, p5; \*with A, p2; with B, p3; with A, p2; with B, p5; rep from \* to last 2 sts; with A, p2.

**Row 5:** With A, k3; with B, k3; \*with A, k2; with B, k5; with A, k2; with B, k3; rep from \* to last 3 sts, with A, k3.

**Row 6:** With A, p4; with B, p1; \*with A, p2; with B, p7; with A, p2; with B, p1; rep from \* to last 4 sts, with A, p4.

**Rows 7 and 8:** Rep Rows 1 and 2.

**Row 9:** With A, k3; with C, k3; \*with A, k2; with C, k7; with A, k1; with C, k1; with A, k1; with C, k7; with A, k2; with C, k3; rep from \* to last 3 sts, with A, k3.

**Row 10:** With A, p3; with C, p3; \*with A, p2; with C, p6; with A, p2; with C, p1; with A, p2; with C, p6; with A, p2; with C, p3; rep from \* to last 3 sts; with A, p3.

**Row 11:** With A, k3; with C, k3; \*with A, k2; with C, k5; with A, k3; with C, k1; with A, k3; with C, k5; with A, k2; with C, k3; rep from \* to last 3 sts, with A, k3.

**Row 12:** With A, p3; with D, p3; \*with A, p2; with D, p4; with A, p4; with D, p1; with A, p4; with D, p4; with A, p2; with D, p3; rep from \* to last 3 sts, with A, p3.

**Row 13:** With A, k3; with D, k3; \*with A, k2; with D, k3; with A, k5; with D, k1; with A, k5; with D, k3; with A, k2; with D, k3; rep from \* to last 3 sts, with A, k3.

**Row 14:** With A, p3; with B, p3; \*with A, p2; with B, p2; with A, p2; with B, p9; with A, p2; with B, p2; with A, p2; with B, p3; rep from \* to last 3 sts, with A, p3.

**Row 15:** Rep Row 13.

**Row 16:** Rep Row 12.

**Row 17:** Rep Row 11.  
**Row 18:** Rep Row 10.  
**Row 19:** Rep Row 9.  
**Row 20:** Rep Row 8.  
**Rows 21-220:** Rep Rows 1-20 ten more times.  
**Rows 221-228:** Rep Rows 1-8.  
 Cut B, C, and D.

**Border**

**Decrease Row (RS):** With A only, k1, k2tog, \*k1, p1; rep from \* to last 3 sts, k2tog, k1 - 175 sts at the end of this row.  
 Work in Seed st as established for 2 in. (5 cm).  
 Bind off in pattern.

**FINISHING**

**Side Border**

**Note:** To pick up sts evenly spaced across an edge, first divide the edge into equal segments. Use clips or scrap yarn to mark the segments. For this Throw, you need to pick up 211 sts, so divide the edge into 10 equal segments. Now, simply pick up and k21 sts in each of the first 9 segments, and 22 sts across the 10th segment. From RS with A, pick up and k211 sts evenly spaced across side edge of Throw including side edges of top and bottom borders.  
 Work in Seed st for 2 in. (5 cm).  
 Bind off in pattern.  
 Rep across opposite side edge.  
 Weave in ends.

ABBREVIATIONS / REFERENCES	
Click for explanation and illustration	
<u>k = knit</u>	<u>k2tog = knit 2 together</u>
<u>p = purl</u>	<u>rep = repeat(s)(ing)</u>
<u>RS = right side</u>	<u>St st = Stockinette stitch</u>
<u>st(s) = stitch(es)</u>	<u>WS = wrong side</u>

Learn to knit instructions: <http://learnToKnit.LionBrand.com>

Every effort has been made to have the knitting and crochet instructions accurate and complete. We cannot be responsible for variance of individual knitters and crocheters, human errors, or typographical mistakes.

\*Wool-Ease® (Article #620).

- *Solid, Heather, Twist: 80% acrylic, 20% wool*
- *Sprinkles, Wheat, Mushroom, Rainbow Mist: 86% acrylic, 10% wool, 4% rayon*
- *Glitter/Multi-colors: 78% acrylic, 19% wool, 3% polyester*
- *Frosts: 70% acrylic, 20% wool, 10% polyamide*
- *Prints: 80% acrylic, 20% wool*

; package size: **Solid, Heather, Twist:** 3 oz/85g; 197 yd/180m balls  
**Sprinkles, Wheat, Mushroom, Rainbow Mist:** 3 oz/85g; 197 yd/180m balls  
**Glitter/Multi-colors:** 2.5 oz./70g; 162 yd/146m balls  
**Frosts:** 2.5 oz./70g; 162 yd/146m balls  
**Prints:** 2.5 oz/70g; 162 yd/146m balls



\*Amazing® (Article #825). 53% Wool, 47% Acrylic ; package size: 1.75oz/50.00 gr. (147yds/135m) pull skeins

We want your project to be a success! If you need help with this or any other Lion Brand pattern, e-mail support is available 7 days per week. Just click [here](#) to explain your problem and someone will help you!

**For thousands of free patterns, visit our website [www.LionBrand.com](http://www.LionBrand.com)**

**To order visit our website [www.lionbrand.com](http://www.lionbrand.com) or call: (800) 258-YARN (9276) any time!**

Copyright ©1998-2011 Lion Brand Yarn Company, all rights reserved. No pattern or other material may be reproduced -- mechanically, electronically, or by any other means, including photocopying -- without written permission of Lion Brand Yarn Company.