



Free Knitting Pattern
Lion Brand® Wool-Ease®
Aspen Sweater
Pattern Number: L30259



This Fair Isle sweater is perfect for lounging in front of the fireplace after a day of skiing.

Free Knitting Pattern from Lion Brand Yarn

Lion Brand® Wool-Ease®

Aspen Sweater

Pattern Number: L30259

SKILL LEVEL: Experienced (Level 5)

SIZE: Small, Medium, Large, 1X, 2X

Finished Chest 42 (46, 50, 54, 58) in. (106.5 (117, 127, 137, 147.5) cm)

Finished Length 25 1/2 (26, 26 1/2, 27, 27 1/2) in. (65 (66, 67.5, 68.5, 70) cm) from shoulder

Note: Pattern is written for smallest size with changes for larger sizes in parentheses. When only one number is given, it applies to all sizes. To follow pattern more easily, circle all numbers pertaining to your size before beginning.

CORRECTIONS: (applied Apr 24, 2016)

GAUGE:

18 sts + 22 rows = 4 in. (10 cm) in St st (k on RS, p on WS) with ~~smaller~~ **Size 7** needles.

Charts corrected.

Additional needle sizes added.

MATERIALS

- 620-151 Lion Brand Wool-Ease Yarn: Grey Heather
5 6, 6, 7, 7 Balls (A)
- 620-098 Lion Brand Wool-Ease Yarn: Natural Heather
2 2, 2, 3, 3 Balls (B)
- 620-152 Lion Brand Wool-Ease Yarn: Oxford Grey
2 2, 2, 2, 2 Balls (C)
- 620-153 Lion Brand Wool-Ease Yarn: Black
1 1, 1, 1, 1 Ball (D)
- Lion Brand Knitting Needles- Size 5 [3.75 mm]
- Lion Brand Knitting Needles - Size 7 [4.5 mm]
- Lion Brand Knitting Needles- Size 8 [5 mm]
- Boye Aluminum Circular Knitting Needles 16 inches Size 7
- Boye Aluminum Circular Knitting Needles 16 inches Size 8
- Clover Bamboo Circular Knitting Needles 29 inches Size 7
- Clover Bamboo Circular Knitting Needles 29 inches Size 8
- Lion Brand Stitch Holders
- Lion Brand Split Ring Stitch Markers
- Lion Brand Large-Eye Blunt Needles (Set of 6)

**Wool-Ease® (Article #620).*

- *Solid, Heather, Twist: 80% acrylic, 20% wool*
- *Sprinkles, Wheat, Mushroom, Rainbow Mist: 86% acrylic, 10% wool, 4% rayon*
- *Glitter/Multi-colors: 78% acrylic, 19% wool, 3% polyester*
- *Frosts: 70% acrylic, 20% wool, 10% polyamide*
- *Prints: 80% acrylic, 20% wool*

*; package size: **Solid, Heather, Twist:** 3 oz/85g; 197 yd/180m balls*

***Sprinkles, Wheat, Mushroom, Rainbow Mist:** 3 oz/85g; 197 yd/180m balls*

***Glitter/Multi-colors:** 2.5 oz./70g; 162 yd/146m balls*

***Frosts:** 2.5 oz./70g; 162 yd/146m balls*

***Prints:** 2.5 oz/70g; 162 yd/146m balls*



GAUGE:

18 sts + 22 rows = 4 in. (10 cm) in St st (k on RS, p on WS) with Size 7 needles.

When you match the gauge in a pattern, your project will be the size specified in the pattern and the materials specified in the pattern will be sufficient. The needle or hook size called for in the pattern is based on what the designer used, but it is not unusual for gauge to vary from person to person. If it takes you fewer stitches and rows to make your swatch, try using a smaller size hook or needles; if more stitches and rows, try a larger size hook or needles.

Making a Gauge Swatch

STITCH EXPLANATION:

PATTERN STITCHES

K1, p1 Rib worked in rows (worked over a multiple of 2 sts + 1 additional st)

Row 1 (RS): *K1, p1; rep from * to last st, k1.

Row 2: *P1, k1; rep from * to last st, p1.

Rep Rows 1-2 for K1, p1 Rib worked in rows.

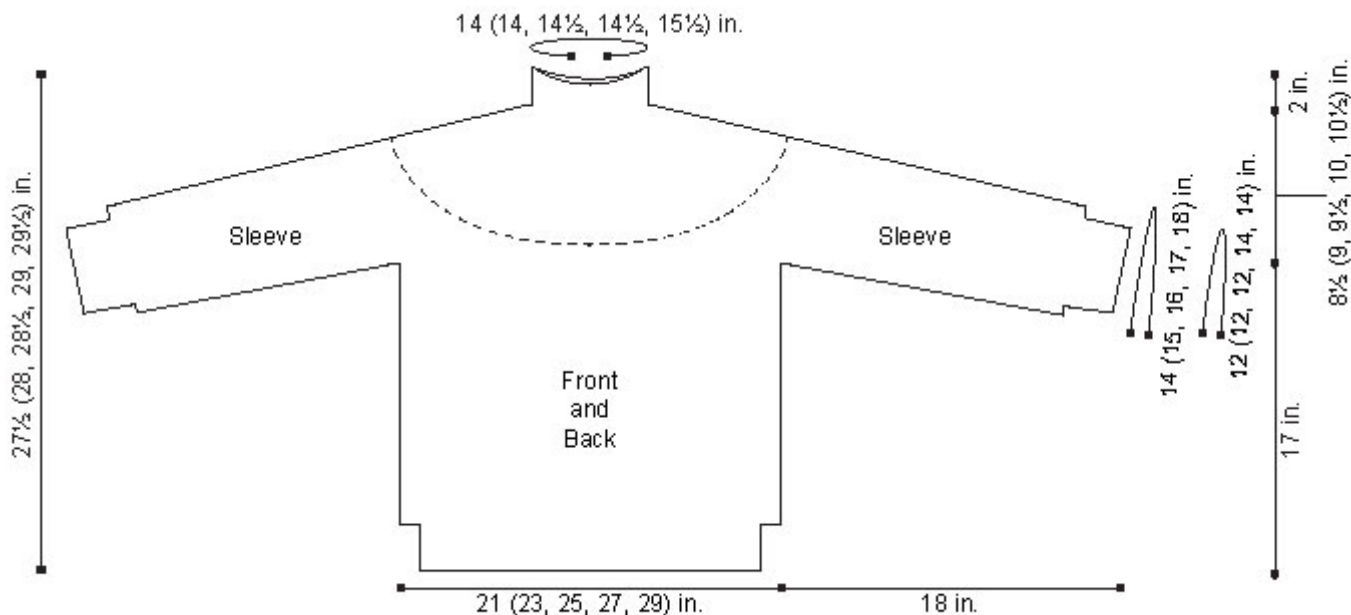
K1, p1 Rib worked in rnds (worked over a multiple of 2 sts)

Rnd 1: *K1, p1; rep from * to end of rnd.

Rep Rnd 1 for K1, p1 Rib worked in rnds.

NOTES:

1. Body and Sleeves are worked separately to armholes, then joined and worked in the round for yoke.
2. Needle size is changed when working from charts to maintain gauge.
3. Sweater is worked in stranded colorwork, using 2 or more colors per row. Carry color not in use across WS of work.
4. Charts are worked in St st. When working in rows, read chart from right to left on RS rows and from left to right on WS rows. When working in the rnd, read chart from right to left for all rnds.



Stitch Key

- = Grey Heather (A)
- = Fisherman (B)
- = Oxford Grey (C)
- = Black (D)
- K = K2tog

Chart 1

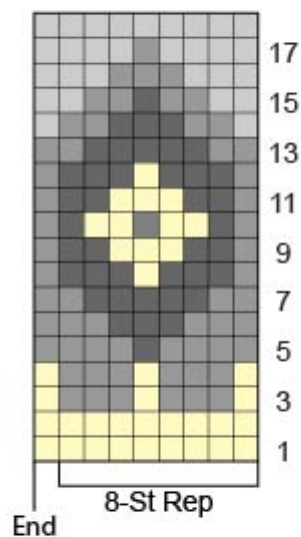
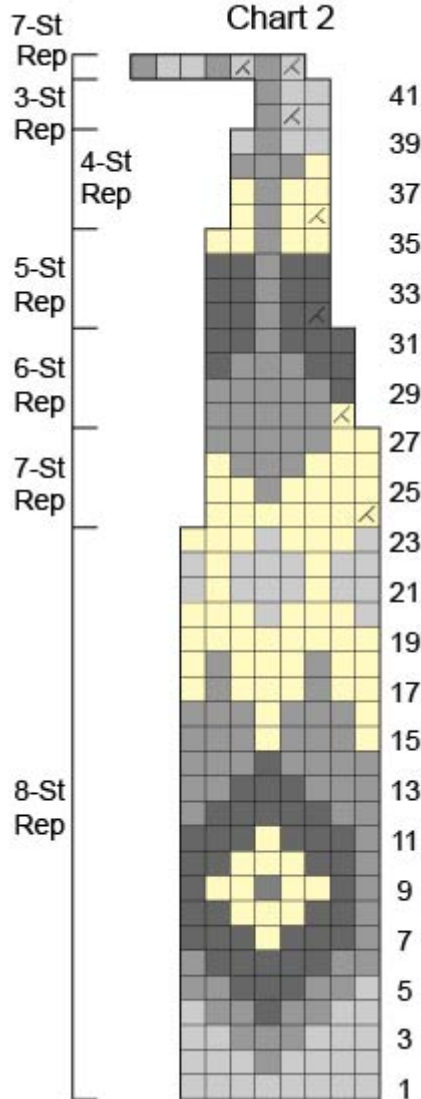


Chart 2



BACK

With B and size 5 (3.75 mm) straight needles, cast on 97 (105, 113, 121, 129) sts.

Work in K1, p1 rib for 2 1/2 in. (6.5 cm), end with a WS row as your last row.

Change to size 8 (5 mm) straight needles. Work 8-st rep of Row 1, Chart 1 across.

Continue as established, working in St st (k on RS, p on WS), and changing color following chart until Row 18 of Chart 1 has been completed.

Change to size 7 (4.5 mm) straight needles and work in St st with A only until piece measures 17 in. (43 cm) from beg, end with a WS row as your last row.

Shape Armholes

Bind off 10 (10, 11, 11, 12) sts at beg of next 2 rows - 77 (85, 91, 99, 105) sts.

Slip rem sts to a stitch holder for yoke.

FRONT

Make same as Back.

SLEEVES (make 2)

With B and size 5 (3.75 mm) straight needles, cast on 57 (57, 57, 65, 65) sts.

Beg with Row 1, work in K1, p1 rib for 2 1/2 in. (6.5 cm), end with a WS row as your last row.

Change to size 8 (5 mm) straight needles, and work 8-st rep of Row 1, Chart 1 across.

Continue as established, working in St st, and changing color following chart until Row 18 of Chart 1 has been completed.

Change to size 7 (4.5 mm) straight needles.

Next Increase Row: With A, k1, kfb, k to last 2 sts, kfb, k1.

Work in St st with A only for 7 rows.

Rep last 8 rows 2 (4, 6, 5, 7) times - 63 (67, 71, 77, 81) sts when all increases have been completed.

Work even in St st (without increasing or decreasing) until piece measures 18 in. (45.5 cm) from beg, end with a WS row as your last row.

Shape Armholes

Bind off 10 (10, 11, 11, 12) sts at beg of next 2 rows - 43 (47, 49, 55, 57) sts rem.

Slip rem sts to a stitch holder for yoke.

Yoke

From RS, with longer size 7 (4.5 mm) circular needle and A, work across 77 (85, 91, 99, 105) sts from Back st holder, 43 (47, 49, 55, 57) sts from one Sleeve st holder, 77 (85, 91, 99, 105) sts from Front st holder, 43 (47, 49, 55, 57) sts from rem Sleeve st holder - 240 (264, 280, 308, 324) sts. Join to work in rnds. Place marker for beg of rnd.

Knit 2 rnds.

Dec Rnd: *K8 (9, 8, 9, 7), k2tog; rep from * around - 216 (240, 252, 280, 288) sts rem.

Knit 2 rnds.

For Sizes M, L, 1X, 2X ONLY

Dec Rnd: *K(8, 7, 8, 10), k2tog; rep from * around - (216, 224, 252, 264) sts rem.

Knit (2, 4, 7, 9) rnds.

For Sizes 1X, 2X ONLY

Dec Rnd: *K(7, 9), k2tog; rep from * around - (224, 240) sts rem.

FOR ALL SIZES

Change to longer size 8 (5 mm) circular needle.

Beg with Rnd 1, work 8-st rep of Row 1 of Chart 2 around - 216 (216, 224, 224, 240) sts.

Continue to follow Chart 2, changing to shorter size (5 mm) circular needle when sts have been sufficiently decreased, until all 42 rnds of Chart 2 have been completed - 63 (63, 65, 65, 70) sts rem. **Note:** For sizes L and 1X, the last rep of Rnd 42 of Chart 2 will end after the first k2tog, k1 of the rep is worked.

Neck Rib

Change to shorter size 7 (4.5 mm) circular needle and work in K1, p1 Rib worked in rnds for 2 in. (5 cm).

Purl 2 rnds.

Bind off purlwise loosely.

FINISHING

Sew underarm seams. Sew side and Sleeve seams. Weave in ends.

ABBREVIATIONS / REFERENCES	
Click for explanation and illustration	
<u>beg = begin(s)(ning)</u>	<u>dec = decreas(e)(s)(ing)</u>
<u>inc = increas(e)(s)(ing)</u>	<u>k = knit</u>
<u>k2tog = knit 2 together</u>	<u>p = purl</u>
<u>rem = remain(s)(ing)</u>	<u>rep = repeat(s)(ing)</u>
<u>rnd(s) = round(s)</u>	<u>RS = right side</u>
<u>St st = Stockinette stitch</u>	<u>st(s) = stitch(es)</u>
<u>tog = together</u>	<u>WS = wrong side</u>

Learn to knit instructions:<http://www.lionbrand.com/learn/how-to-knit>

Every effort has been made to have the knitting and crochet instructions accurate and complete. We cannot be responsible for variance of individual knitters and crocheters, human errors, or typographical mistakes.

We want your project to be a success! If you need help with this or any other Lion Brand pattern, e-mail support is available 7 days per week. Just click [here](#) to explain your problem and someone will help you!

For thousands of free patterns, visit our website www.LionBrand.com

To order visit our website www.lionbrand.com or call: (800) 258-YARN (9276) any time!

When in New York City, visit the Lion Brand Yarn Studio where we have the largest selection of our yarns anywhere and over 100 classes and events monthly.

34 West 15th Street, NY, NY 10011

Copyright ©1998-2017 Lion Brand Yarn Company, all rights reserved. No pattern or other material may be reproduced -- mechanically,

electronically, or by any other means, including photocopying -- without written permission of Lion Brand Yarn Company.