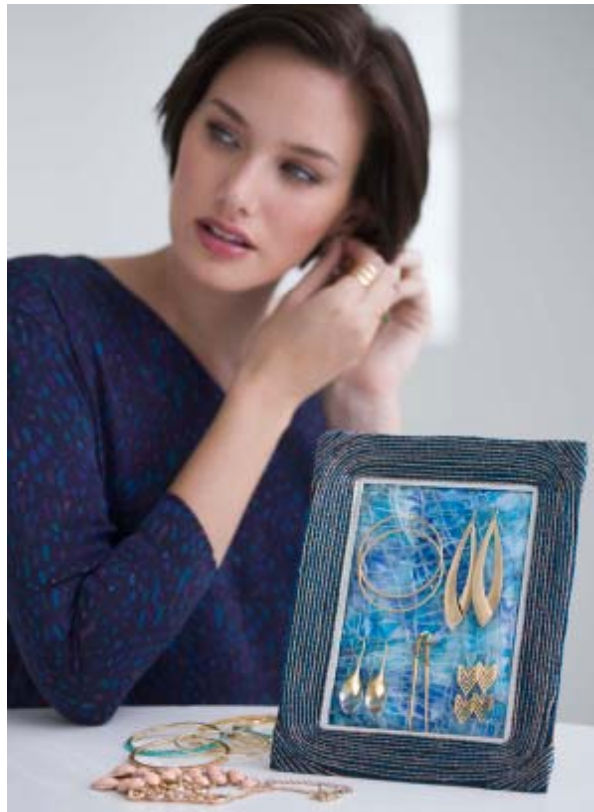




**Free Craft Pattern**  
**Lion Brand® Imagine - Bonbons**  
**Sparkle Pretty Frame**  
Pattern Number: L32197



# Free Craft Pattern from Lion Brand Yarn

## Lion Brand® Imagine - Bonbons Sparkle Pretty Frame

Pattern Number: L32197

**SKILL LEVEL:** Beginner

**SIZE:** Varies

As desired

**CORRECTIONS:** None as of Sep 10, 2013. To check for later updates, click [here](#).

\**Imagine* (Article #515). **Prints:** 40% Acrylic, 30% Wool, 30% Nylon

**Metallic:** 38% Acrylic, 30% Wool, 30% Nylon, 2% Metallic Polyester; package size: 1.40oz/40.00 gr. (8yds/7m) pull skeins



### MATERIALS

- 515-316 Lion Brand Imagine Yarn: Blue Bayou

1 Ball (A)

- 601-680 Lion Brand Bonbons Yarn: Crayons

1 Ball (B)

- Additional Materials

Picture frame

Piece of fabric 1 in. (2.5 cm) larger on all sides than backing piece of Frame

White craft glue

Packing tape

Small paint brush

Paper plate

\**Bonbons* (Article #601).

**Cotton:** 100% Cotton. **Care:** Machine Wash Cool, Gentle Cycle, Do Not Bleach, Dry Flat, Low Iron, Dry Clean Any Solvent Except Trichloroethylene.

**Acrylic:** 100% Acrylic. **Care:** Machine Wash and Dry, Do Not Bleach, Do Not Iron, Tumble Dry Normal, Dry Clean and Solvent Except Trichloroethylene.

**Metallic:** 96% Acrylic, 4% Metallic Polyester. **Care:** Machine Wash Cool, Lay Flat to Dry, Do Not Bleach, Do Not Iron, Dry Clean Any Solvent Except Trichloroethylene.; package size:

**Cotton:** Weight Category 2: Sport Weight

8 x .35oz/10g

8 x 28yd/26m

**Acrylic:** Weight Category 3: DK Weight

8 x .35oz/10g

8 x 28yd/26m

**Metallic:** Weight Category 2: Sport Weight

8 x .35oz/10g

8 x 38.3 yd/35m



### GAUGE:

Exact gauge is not essential to this project.

### FRAME

Remove backing from Frame.

Lay fabric the wrong side facing up onto a flat surface.

Pour a small amount of glue into the paper plate, then brush glue over the front surface of the backing.

Lay backing onto the wrong side of the fabric, pressing lightly to adhere and allow to dry. Brush a small amount of glue onto the wrong side of the backing, making a 1 in. (2.5 cm) border around the backing.

Fold edges of fabric over the backing and press lightly into the glue. Allow to dry.

Lay Frame, right side up, onto a flat surface protected with a plastic bag. Decide which colors of B yarns you'd like to use to embellish the Frame.

Brush glue onto the Frame, then apply strands of B yarns as desired.  
Allow to dry.

### **FINISHING**

Cut a length of A yarn twice the length of the Frame backing. The yarn is constructed as a tube. Gently slide your arm through the yarn tube, grasp the yarn, then pull yarn tube back up your arm to double it. Slide doubled yarn tube over the fabric covered backing.

Re-assemble Frame.

---

Every effort has been made to have the knitting and crochet instructions accurate and complete. We cannot be responsible for variance of individual knitters and crocheters, human errors, or typographical mistakes.

We want your project to be a success! If you need help with this or any other Lion Brand pattern, e-mail support is available 7 days per week. Just click [here](#) to explain your problem and someone will help you!

**For thousands of free patterns, visit our website [www.LionBrand.com](http://www.LionBrand.com)**

**To order visit our website [www.lionbrand.com](http://www.lionbrand.com) or call: (800) 258-YARN (9276) any time!**

**When in New York City, visit the Lion Brand Yarn Studio where we have the largest selection of our yarns anywhere and over 100 classes and events monthly.**

**34 West 15th Street, NY, NY 10011**

Copyright ©1998-2013 Lion Brand Yarn Company, all rights reserved. No pattern or other material may be reproduced -- mechanically, electronically, or by any other means, including photocopying -- without written permission of Lion Brand Yarn Company.