



Free Knitting Pattern
Lion Brand® Vanna's Choice®
Sideways Cable Pullover
Pattern Number: L32178



Designed by Vladimir Teriokhin.

Free Knitting Pattern from Lion Brand Yarn

Lion Brand® Vanna's Choice®

Sideways Cable Pullover

Pattern Number: L32178

SKILL LEVEL: Intermediate (Level 3)

SIZE: Small, Medium, Large, 1X, 2X, 3X

Finished Bust 34 (40, 46, 52, 58, 64) in. (86.5 (101.5, 117, 132, 147.5, 162.5) cm)

Finished Lengths Short (Medium, Long) 17 1/2 (21 1/2, 25 1/2) in. (44.5 (54.5, 65) cm)

Note: Pattern is written for smallest size with changes for larger sizes in parentheses. When only one number is given, it applies to all sizes. To follow pattern more easily, circle all numbers pertaining to your size before beginning.

CORRECTIONS: (applied Jul 15, 2014)

PULLOVER

...

Rows 2-4: Work in St st (k on RS, p on WS) to marker, slip marker (sm), work next row of Bobble Cable pattern to next marker, **sm**, work to end of row in St st.

Second Shoulder

Joining Row (WS): Work in patterns as established to last 5 sts, ~~k2, p1, k1, p1,~~ **p1, k1, p1, k2**, working across sts from First Side stitch holders, ~~p1, k1, p1, k2,~~ **k2, p1, k1, p1**, work to end of row – ~~191 (235, 279)~~ **194 (238, 282)** sts.

Next Row (RS): Work in patterns as established across first ~~107 (129, 151)~~ **92 (114, 136)** sts, (k1, p1) twice, ~~p1~~ **p2**, (p1, k1) twice, work in patterns as established to end of row.

Shape Sleeve

FOR SHORT LENGTH ONLY

Next Row (RS): Bind off 66 (63, 60, 57, 54, 51) sts, k next 9 (12, 15, 18, 21, 24) sts, pm, (p3, k4, k2tog, k4) 3 times, p3, pm, work in patterns to end of row.

Next Row: Bind off 66 (63, 60, 57, 54, 51) sts, k **p** to marker, sm, beg with Row 16 work in Bobble Cable pattern to next marker, k **p** to end of row - 59 (65, 71, 77, 83, 89) sts.

FOR MEDIUM LENGTH ONLY

Next Row (RS): Bind off 88 (85, 82, 79, 76, 73) sts, k next 9 (12, 15, 18, 21, 24) sts, pm, (p3, k4, k2tog, k4) 3 times, p3, pm, work in patterns to end of row.

Next Row: Bind off 88 (85, 82, 79, 76, 73) sts, k **p** to marker, sm, beg with Row 16, work in Bobble Cable pattern to next marker, k **p** to end of row - 59 (65, 71, 77, 83, 89) sts.

FOR LONG LENGTH ONLY

Next Row (RS): Bind off 110 (107, 104, 101, 98, 95) sts, k next 9 (12, 15, 18, 21, 24) sts, pm, (p3, k4, k2tog, k4) 3 times, p3, pm, work in patterns to end of row.

Next Row: Bind off 110 (107, 104, 101, 98, 95) sts, k **p** to marker, sm, beg with Row 16, work in Bobble Cable pattern to next marker, k **p** to end of row - 59 (65, 71, 77, 83, 89) sts.

MATERIALS

- 860-400 Lion Brand Vanna's Choice Yarn: Oatmeal
8 10, 11, 12, 14, 15 Balls
For Short Length
- 860-400 Lion Brand Vanna's Choice Yarn: Oatmeal
10 12, 13, 15, 17,

- 19 Balls For Medium Length
- 860-400 Lion Brand Vanna's Choice Yarn: Oatmeal
12 14, 16, 18, 20,
22 Balls For Long Length
- Clover Bamboo Circular Knitting Needles 29 inches Size 9
- Clover Bamboo Circular Knitting Needles 36" Size 9
- Lion Brand Cable Needles (Set of 2)
- Lion Brand Stitch Holders
- Lion Brand Split Ring Stitch Markers
- Lion Brand Large-Eye Blunt Needles (Set of 6)

**Vanna's Choice® (Article #860). 100% Premium Acrylic*
400, 401, 403: 92% Acrylic, 8% Rayon
402: 96% Acrylic, 4% Rayon; package size: **Solids:** 3.5 oz (100 g), 170 yards (156 m)
Prints, Tweeds, & Heathers: 3 ozs (85 g) , 145 yards (133 meters)
Twists: 2.5 oz (70 g), 121 yards (111 meters)



GAUGE:

22 sts + 22 rows = 4 in. (10 cm) in K2, p2 rib.
 16 sts + 16 rows = 3 in. (7.5 cm) over 5/5 Cable pattern.

When you match the gauge in a pattern, your project will be the size specified in the pattern and the materials specified in the pattern will be sufficient. The needle or hook size called for in the pattern is based on what the designer used, but it is not unusual for gauge to vary from person to person. If it takes you fewer stitches and rows to make your swatch, try using a smaller size hook or needles; if more stitches and rows, try a larger size hook or needles.

Making a Gauge Swatch

STITCH EXPLANATION:

MB (Make Bobble) (K1, yo, k1, yo, k1) all in next st, turn, k5, turn, k5tog.

kfb (knit in front and back) Knit next st without removing it from left needle, then k through back of same st – 1 st increased.

pfb (purl in front and back) Purl next st without removing it from left needle, then p through back of same st – 1 st increased.

skp Slip 1 as if to knit, knit 1, pass slip stitch over knit stitch – 1 st decreased.

PATTERN STITCHES

K1, p1 Rib worked in rows (multiple of 2 sts + 1)

Row 1 (RS): *K1, p1; rep from * to last st, k1.

Row 2: K the knit sts and p the purl sts.

Rep Row 1 for K1, p1 Rib.

K2, p2 Rib worked in rnds (multiple of 4 sts)

Rnd 1: *K2, p2; rep from * to end of rnd.

Rep Rnd 1 for K2, p2 Rib.

Bobble Rib (worked over 3 sts)

Row 1: MB, p1, MB.

Rows 2,4 and 6: P1, k1, p1.

Rows 3 and 5: K1, p1, k1.

Rep Rows 1-6 for Bobble Rib.

3/3 Cable (worked over 6 sts)

Row 1 and 3 (RS): Knit.

Row 2 and all WS Rows: Purl.

Row 5: Sl 3 sts to cable needle and hold in back, k3, then k3 from cable needle.

Row 6: Purl.

Rep Rows 1-6 for 3/3 Cable.

5/5 Cable (worked over 16 sts)

Rows 1, 3 and 5 (RS): P3, k10, p3.

Row 2 and all WS Rows: K3, p10, k3.

Row 7: P3, Sl 5 sts to cable needle and hold in back, k5, then k5 from cable needle, p3.

Rows 9, 11, 13 and 15: P3, k10, p3.

Row 16: K3, p10, k3.

Rep Rows 1-16 for 5/5 Cable.

Bobble Cable pattern (worked over 39 sts)

Rows 1, 3 and 5 (RS): (P3, k9) 3 times, p3.

Row 2 and all WS Rows: (K3, p9) 3 times, k3.

Row 7: P3, (Sl 4 sts to cable needle and hold in back, k5, then k4 from cable needle, p1, MB, p1) twice, 4/5 RC, p3.

Row 9, 11 and 13: (P3, k9) 3 times, p3.

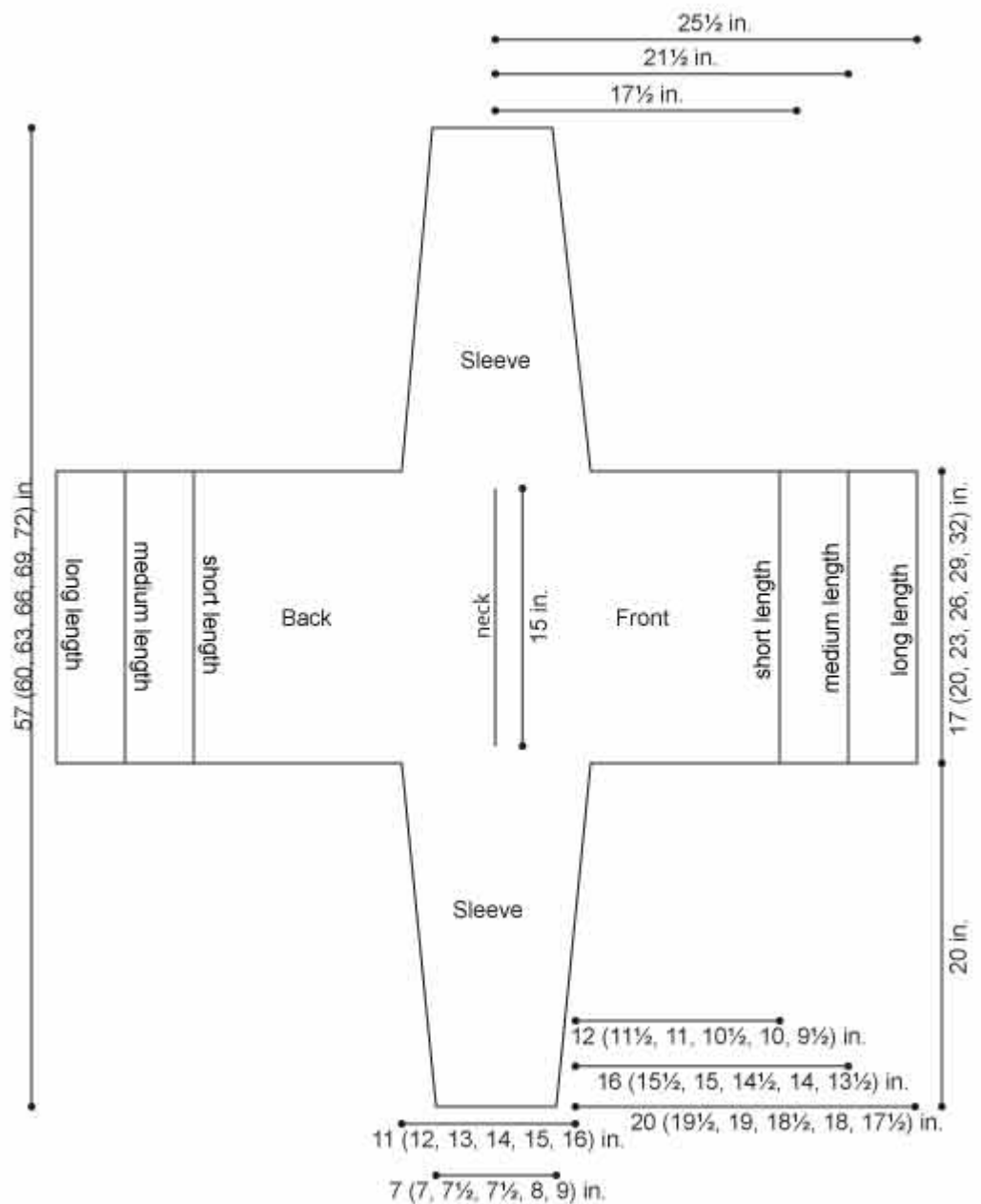
Row 15: P3, (k4, MB, k4, p3) 3 times, p3.

Row 16: (K3, p9) 3 times, k3.

Rep Rows 1-16 for Bobble Cable pattern.

NOTES:

1. Pullover is worked in one piece from the cuff of one sleeve to the cuff of the opposite sleeve, then folded and seamed.
2. Multiple patterns are worked AT THE SAME TIME. Read through the pattern before beginning to be sure you are comfortable with keeping track of both shapings and stitch patterns at the same time.
3. A circular needle is used to accommodate the large number of sts, work back and forth in rows as if working on straight needles.
4. Stitches are picked up around neck edge for collar. Collar is worked in the round, then seamed to WS.
5. When you see '- 12 sts' in the instructions, this lets you know how many sts you will have at the end of that specific row.
6. Cable patterns can be worked from written instructions or from charts. If working from chart, follow chart from right to left on RS rows and from left to right on WS rows.



PULLOVER

Sleeve

With shorter circular needle, cast on 41 (41, 43, 43, 45, 49) sts.

Working back and forth in rows as if working on straight needles, work in K1, p1 Rib for 2 in. (5 cm), end with a WS row.

Row 1 (RS): K1 (1, 2, 2, 3, 5), place marker (pm), beg with Row 1, work Bobble Cable pattern over next 39 sts, pm, k1 (1, 2, 2, 3, 5).

Rows 2-4: Work in St st (k on RS, p on WS) to marker, slip marker (sm), work next row of Bobble Cable pattern to next marker, sm, work to end of row in St st.

Increase Row 1 (RS): Kfb, k to marker, sm, work in Bobble Cable pattern to next marker, sm, k to last st, kfb – 43 (43, 45, 45, 47, 51) sts.

Next 7 Rows: Rep Row 2.

Increase Row 2 (RS): K1, kfb, k to marker, sm, work in Bobble Cable pattern to next marker, sm, k to last 2 sts, kfb, k1 – 45 (45, 47, 47, 49, 53) sts.

Continuing in patterns as established, rep Inc Row 2 every 8th row 7 (0, 0, 0, 0, 0) more times, every 6th row 0 (10, 4, 0, 0, 0) times, then every 4th row 0 (0, 8, 15, 17, 18) times, working new sts in St st – 59 (65, 71, 77, 83, 89) sts. **Note:** When you see '0' repeats in an instruction, this means that you should not perform that particular instruction for your specific size. Instead just skip to the next part of the instruction.

Work until sleeve measures about 20 in. (51 cm) from beg, end with Row 14 of Bobble Cable pattern.

Next Row: Work Row 15 of Bobble Cable pattern but instead of making the bobbles, simply knit the st for each of the bobbles.

Next Row: Work Row 16 of Bobble Cable pattern, removing markers as you go.

Shape Body

FOR SHORT LENGTH ONLY, ALL SIZES

Next Row (RS): Continue with shorter circular needle, and cast on 66 (63, 60, 57, 54, 51) sts, working across cast-on sts, p4, beg with Row 1, (work 3/3 Cable over 6 sts, work 5/5 Cable over next 16 sts) 3 times, work 3/3 Cable over 6 sts, p3, k4, kfb, k4, p3, (k1, p1) twice, pfb, (p1, k1) twice, p3, k4, kfb, k4, p3, work 3/3 Cable over 6 sts, p3, k to end of row – 128 (131, 134, 137, 140, 143) sts.

Next Row: Cast on 66 (63, 60, 57, 54, 51) sts, working across cast-on sts, p4, beg with Row 2, (work 3/3 Cable over 6 sts, work 5/5 cable over next 16 sts) 3 times, work 3/3 Cable over 6 sts, work Row 2 of 5/5 Cable over next 16 sts, (p1, k1) twice, k2, (k1, p1) twice, work Row 2 of 5/5 Cable over next 16 sts, (work 3/3 Cable over 6 sts, 5/5 cable over next 16 sts) 3 times, work 3/3 Cable over 6 sts, k4 – 194 sts.

FOR MEDIUM LENGTH ONLY, ALL SIZES

Next Row (RS): Change to longer circular needle, cast on 88 (85, 82, 79, 76, 73) sts, working across cast-on sts, p4, beg with Row 1, (work 3/3 Cable over 6 sts, work 5/5 cable over next 16 sts) 4 times, work 3/3 Cable over 6 sts, p3, k4, kfb, k4, p3, (k1, p1) twice, pfb, (p1, k1) twice, p3, k4, kfb, k4, p3, work 3/3 Cable over 6 sts, p3, k to end of row – 150 (153, 156, 159, 162, 165) sts.

Next Row: Cast on 88 (85, 82, 79, 76, 73) sts, working across cast-on sts, p4, beg with Row 2, (work 3/3 Cable over 6 sts, work 5/5 cable over next 16 sts) 4 times, work 3/3 Cable over 6 sts, work Row 2 of 5/5 Cable over next 16 sts, (p1, k1) twice, k2, (k1, p1) twice, work Row 2 of 5/5 Cable over next 16 sts, (work 3/3 Cable over 6 sts, work 5/5 cable over next 16 sts) 4 times, work 3/3 Cable over 6 sts, k4 – 238 sts.

FOR LONG LENGTH ONLY, ALL SIZES

Next Row (RS): Change to longer circular needle, cast on 110 (107, 104, 101, 98, 95) sts, working across cast-on sts, p4, beg with Row 1, (work 3/3 Cable over 6 sts, work 5/5 cable over next 16 sts) 5 times, work 3/3 Cable over 6 sts, p3, k4, kfb, k4, p3, (k1, p1) twice, pfb, (p1, k1) twice, p3, k4, kfb, k4, p3, work 3/3 Cable over 6 sts, p3, k to end of row – 172 (175, 178, 181, 184, 187) sts.

Next Row: Cast on 110 (107, 104, 101, 98, 95) sts, working across cast-on sts, p4, beg with Row 2, (work 3/3 Cable over 6 sts, work 5/5 cable over next 16 sts) 5 times, work 3/3 Cable over 6 sts, work Row 2 of 5/5 Cable over next 16 sts, (p1, k1) twice, k2, (k1, p1) twice, work Row 2 of 5/5 Cable over next 16 sts, (work 3/3 Cable over 6 sts, work 5/5 cable over next 16 sts) 5 times, work 3/3 Cable over 6 sts, k4 – 282 sts.

FOR ALL SIZES AND LENGTHS

First Shoulder

Continue in patterns as established until body measures 1 (2 1/2, 4, 5 1/2, 7, 8 1/2) in. (2.5 (6.5, 10, 14, 18, 21.5) cm) from body cast-on row, end with a WS row as last row worked.

Note: The First and Second Side is written for shortest length with changes for longer lengths in parentheses. When only one number is given, it applies to all sizes.

Shape Neck

First Side

Next Row (RS): Working in patterns as established, work across 92 (114, 136) sts, beg with Row 1, work Bobble Rib over 3 sts, p2, slip rem sts to stitch holder for Second Side – 97 (119, 141) sts rem for First Side.

Next Row: K2, work Row 2 of Bobble Rib over 3 sts, work in patterns as established to end of row.

Continuing in patterns as established, work until 15 rep of Bobble Rib Row 1 have been completed.

Sl sts to stitch holder.

Second Side Next Row (RS): With RS facing and working across sts from Second Side stitch holder, p2,

work Row 1 of Bobble Rib over 3 sts, work in patterns as established across rem 92 (114, 136) sts – 97 (119, 141) sts.

Next Row: Work in patterns as established over first 92 (114, 136) sts, work Row 2 of Bobble Rib, k2. Continuing in patterns as established, work until 15 rep of Bobble Rib Row 1 have been completed.

Second Shoulder

Joining Row (WS): Work in patterns as established to last 5 sts, p1, k1, p1, k2, working across sts from First Side stitch holders, k2, p1, k1, p1, work to end of row – 194 (238, 282) sts.

Next Row (RS): Work in patterns as established across first 92 (114, 136) sts, (k1, p1) twice, p2, (p1, k1) twice, work in patterns as established to end of row.

Work in patterns as established until body measures 1 (2 1/2, 4, 5 1/2, 7, 8 1/2) in. (2.5 (6.5, 10, 14, 18, 21.5) cm) from Joining Row, end with Row 14.

Shape Sleeve

FOR SHORT LENGTH ONLY

Next Row (RS): Bind off 66 (63, 60, 57, 54, 51) sts, k next 9 (12, 15, 18, 21, 24) sts, pm, (p3, k4, k2tog, k4) 3 times, p3, pm, work in patterns to end of row.

Next Row: Bind off 66 (63, 60, 57, 54, 51) sts, p to marker, sm, beg with Row 16 work in Bobble Cable pattern to next marker, p to end of row – 59 (65, 71, 77, 83, 89) sts.

FOR MEDIUM LENGTH ONLY

Next Row (RS): Bind off 88 (85, 82, 79, 76, 73) sts, k next 9 (12, 15, 18, 21, 24) sts, pm, (p3, k4, k2tog, k4) 3 times, p3, pm, work in patterns to end of row.

Next Row: Bind off 88 (85, 82, 79, 76, 73) sts, p to marker, sm, beg with Row 16, work in Bobble Cable pattern to next marker, p to end of row – 59 (65, 71, 77, 83, 89) sts.

FOR LONG LENGTH ONLY

Next Row (RS): Bind off 110 (107, 104, 101, 98, 95) sts, k next 9 (12, 15, 18, 21, 24) sts, pm, (p3, k4, k2tog, k4) 3 times, p3, pm, work in patterns to end of row.

Next Row: Bind off 110 (107, 104, 101, 98, 95) sts, p to marker, sm, beg with Row 16, work in Bobble Cable pattern to next marker, p to end of row – 59 (65, 71, 77, 83, 89) sts.

FOR ALL SIZES

Sleeve

Next Row (RS): K10 (13, 16, 19, 22, 25), work next row of Bobble Cable pattern across 39 sts, k10 (13, 16, 19, 22, 25).

Work in patterns as established until sleeve measures 4 (3 1/2, 4, 3 1/2, 2, 2 1/2) in. (10 (9, 10, 9, 5, 6.5) cm) from bind-off row, end with a WS row.

Dec Row (RS): K1, skp, work in pattern to last 2 sts, k2tog, k1 – 57 (63, 69, 75, 81, 87) sts rem.

Continuing in patterns as established, rep Dec Row every 4th row 0 (0, 8, 15, 17, 18) times, every 6th row 0 (10, 4, 0, 0, 0) times, then every 8th row 8 (1, 1, 1, 1, 1) more times – 41 (41, 43, 43, 45, 49) sts rem on last Dec Row.

Work until piece measures 18 in. (45.5 cm), end with a WS row as your last row.

Work in K1, p1 Rib for 2 in. (5 cm), end with a WS row.

Bind off.

FINISHING

Sew side and sleeve seams.

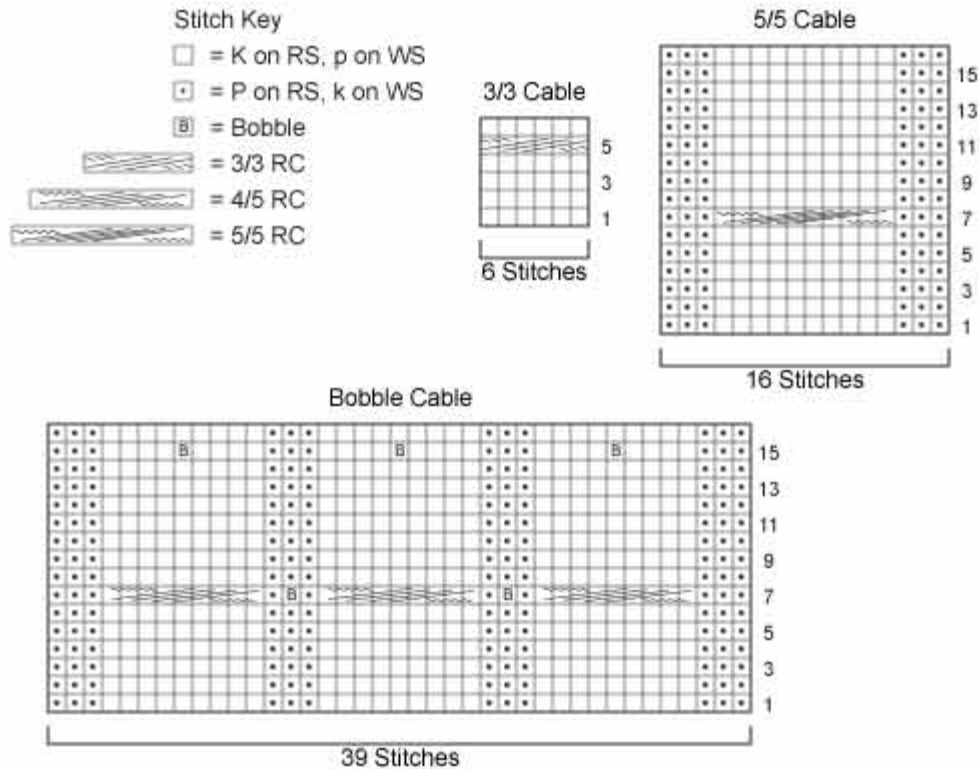
Collar

With RS facing and shorter circular needle, beg at either shoulder edge of neck, pick up and k 140 sts evenly spaced around neck edge. Place marker for beg of rnd. Join by working the first st on the left hand needle with the working yarn from the right hand needle and being careful not to twist sts.

Rnd 1: Work in K2, p2 Rib worked in rnds, until collar measures 14 in. (35.5 cm) Bind off.

Fold bound-off edge of collar to WS and sew in place along pick up rnd.

Weave in ends.



ABBREVIATIONS / REFERENCES

Click for explanation and illustration

beg = begin(s)(ning)	dec = decreas(e)(s)(ing)
inc = increas(e)(s)(ing)	k = knit
k2tog = knit 2 together	p = purl
p2tog = purl 2 together	rem = remain(s)(ing)
rep = repeat(s)(ing)	rnd(s) = round(s)
RS = right side	sl = slip
St st = Stockinette stitch	st(s) = stitch(es)
tog = together	WS = wrong side

Learn to knit instructions: <http://learnToKnit.LionBrand.com>

Every effort has been made to have the knitting and crochet instructions accurate and complete. We cannot be responsible for variance of individual knitters and crocheters, human errors, or typographical mistakes.

We want your project to be a success! If you need help with this or any other Lion Brand pattern, e-mail support is available 7 days per week. Just click [here](#) to explain your problem and someone will help you!

For thousands of free patterns, visit our website www.LionBrand.com

To order visit our website www.lionbrand.com or call: (800) 258-YARN (9276) any time!

When in New York City, visit the Lion Brand Yarn Studio where we have the largest selection of

our yarns anywhere and over 100 classes and events monthly.
34 West 15th Street, NY, NY 10011

Copyright ©1998-2014 Lion Brand Yarn Company, all rights reserved. No pattern or other material may be reproduced -- mechanically, electronically, or by any other means, including photocopying -- without written permission of Lion Brand Yarn Company.