



Free Knitting Pattern
Lion Brand® Heartland - Homespun®
Animal Talk Hat
Pattern Number: L32278



Designed by Amy Bahrt.

Free Knitting Pattern from Lion Brand Yarn

Lion Brand® Heartland - Homespun®

Animal Talk Hat

Pattern Number: L32278

SKILL LEVEL: Intermediate (Level 3)

SIZE: Varies

Small (Medium, Large)

Finished Circumference About 17 (19, 20) in. (43 (48, 51) cm).

CORRECTIONS: None as of Mar 14, 2014. To check for later updates, click [here](#).

MATERIALS

- 136-173 Lion Brand Heartland Yarn:
Everglades
1 Ball (A)
- 136-105 Lion Brand Heartland Yarn:
Glacier Bay
1 Ball (B)
- 136-098 Lion Brand Heartland Yarn:
Acadia
1 Ball (C)
- 136-135 Lion Brand Heartland Yarn:
Yosemite
1 Ball (D)
- 136-126 Lion Brand Heartland Yarn:
Sequoia
1 Ball (E)
- 136-103 Lion Brand Heartland Yarn:
Denali
1 Ball (F)
- 136-158 Lion Brand Heartland Yarn:
Yellowstone
1 Ball (G)
- 790-393 Lion Brand Homespun Yarn:
Cream
1 Ball (H)
- Lion Brand Knitting Needles - Size 7 [4.5 mm]
- Lion Brand Knitting Needles- Size 5 [3.75 mm]

**Heartland (Article #136). 100% Acrylic; package size: 5.00oz/142.00 gr. (251yds/230m) pull skeins*



**Homespun® (Article #790). 98% Acrylic, 2% Polyester; package size: 6.00oz/170.00 gr. (185yds/169m) pull skeins*



- Lion Brand Crochet Hook - Size G-6 (4 mm)
- Lion Brand Split Ring Stitch Markers
- Lion Brand Large-Eye Blunt Needles (Set of 6)

GAUGE:

18 sts + 21 rows = 4 in. (10 cm) in St st (k on RS, p on WS) with larger needles.

When you match the gauge in a pattern, your project will be the size specified in the pattern and the materials specified in the pattern will be sufficient. The needle or hook size called for in the pattern is based on what the designer used, but is not unusual for gauge to vary from person to person. If it takes you fewer stitches and rows to make your swatch, try using a smaller size hook or needles; if more stitches and rows, try a larger size hook or needles.

Making a Gauge Swatch

STITCH EXPLANATION:

PATTERN STITCH

K1, p1 Rib (multiple of 2 sts)

Row 1: *K1, p1; rep from * to end of row.

Row 2: K the knit sts and p the purl sts.

Rep Row 2 for K1, p1 Rib.

NOTES:

1. Hat is worked back and forth in rows and then seamed.
2. Hat is worked in intarsia and stranded colorwork, following Charts.
3. When working from Chart, work in St st (k on RS, p on WS), reading RS rows from right to left and WS rows from left to right.
4. When working in intarsia colorwork, do not carry unused color(s) across WS of work. Use a separate ball of yarn for each color section. Wind yarns into separate balls as needed. Twist yarns on WS to prevent holes.
5. When working in stranded colorwork, carry color not in use across WS of work.
6. End with a WS row means that the last row you work should be a WS row, and the next row that you are ready to work will be a RS row.
7. When you see "- 12 sts" in the instructions, this lets you know how many sts you will have at the end of that specific row.

HAT

With smaller needles and A, cast on 80 (88, 92) sts.

Work in K1, p1 rib for 8 rows.

Change to larger needles.

Begin Checkerboard Chart

Next Row (RS): Working in St st (k on RS, p on WS), and stranded colorwork, work Row 1 of Checkerboard Chart across.

Continuing in St st as established, work until all 4 rows of Checkerboard Chart have been completed.

Begin Animal Charts

Note: Work all animal charts in St st and intarsia colorwork.

Next Row (RS): With B, k10 (12, 13), beg with Row 1 of all charts, work Duck Chart across next 11 sts, with B, k10 (12, 14), work Sheep Chart across next 14 sts, with B, k10 (12, 14), work Pig Chart across next 14 sts, with B, k to end of row.

Continuing to work Charts as established and working rem sts in St st with B, work until all rows of Charts have been completed.

Continue in St st with B only until piece measures 4 3/4 (5 1/2, 6) in. (12 (14, 15) cm from beg, end with a WS row as the last row you work.

Shape Crown (top of Hat)

Dec Row 1 (RS): K9 (10, 11), k2tog, place marker; rep from * to last 3 (4, 1) sts, k to end of row – 73 (81, 85) sts rem.

Purl 1 row, slipping markers as you come to them.

Dec Row 2: *K to 2 sts before marker, k2tog, slip marker; rep from * across to last 3 (4, 1) sts, k to end of row – 66 (74, 78) sts rem.

Rep last 2 rows until 29 (32, 29) sts rem.

Purl 1 row, removing markers as you work.

Last Row: K2tog across to last 1 (0, 1) st, k 1 (0, 1).

Cut yarn, leaving a long yarn tail. Thread yarn tail through rem sts and pull to gather. Knot securely.

FINISHING

Wing

With D and crochet hook, make a chain about 1 1/4 in. (3 cm) long. Fasten off.

Following photograph for [L32276 Animal Talk Cardigan](#), sew chain to duck body, curving to make a wing shape.

Beak

With D and crochet hook, chain 8, join with slip st in first chain to make a loop, chain 8, join with slip st in first chain to make a second loop.

Fasten off.

Sew beak to duck.

With B, embroider a French knot eye on duck.

Sheep

With E and crochet hook, chain 9, join with slip st in first chain to make a loop.

Fasten off.

Sew loop to sheep for ear.

With C, embroider a French knot eye on sheep.

Pig

Ear

With F, make same as sheep ear.

Sew to pig.

Pig Tail

With F and crochet hook, chain 14.

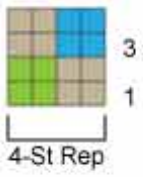
Fasten off. Coil chain into a spiral and sew to pig for tail.

With A, embroider a French knot eye on pig.

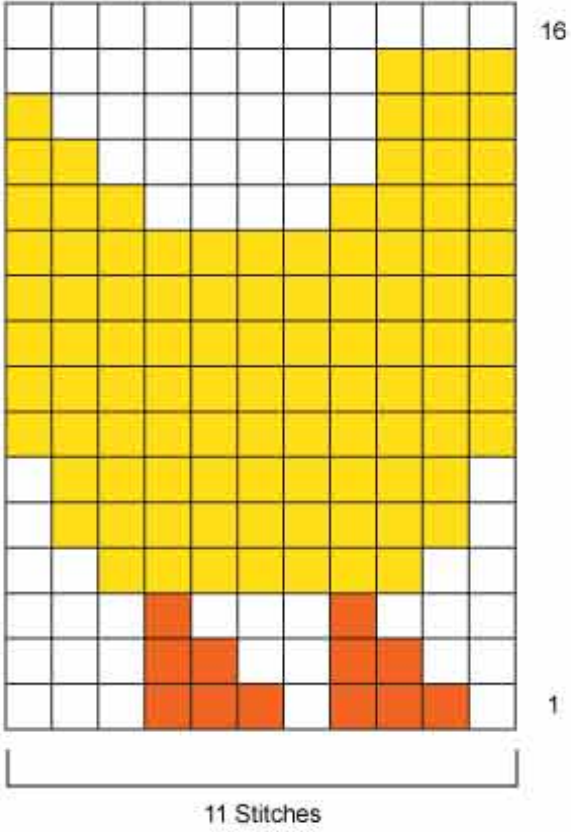
Seam sides of piece to make Hat.

Weave in ends.

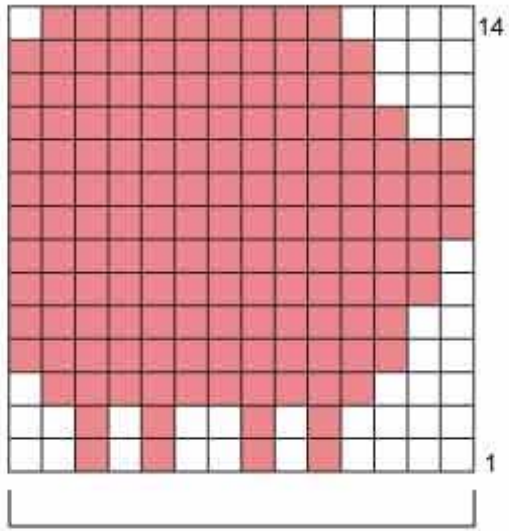
Checkerboard Chart



Duck Chart

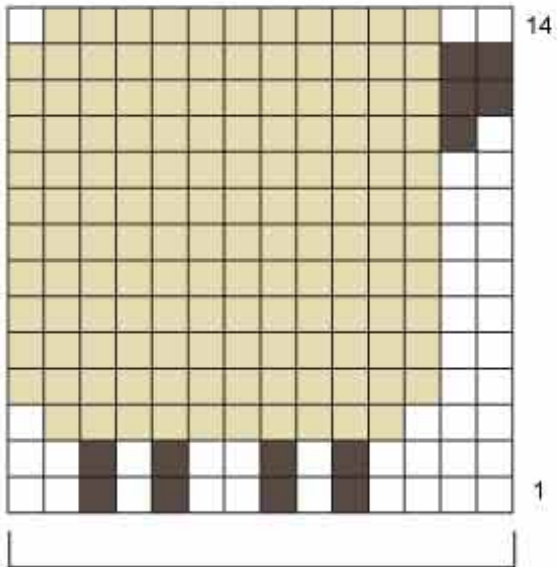


Pig Chart








14 Stitches

Sheep Chart



14 Stitches

Stitch Key

	A or B
	A
	B
	C
	D
	E
	F
	G
	H

ABBREVIATIONS / REFERENCES

Click for explanation and illustration

<u>beg = begin(s)(ning)</u>	<u>ch(s) = chain(s)</u>
<u>dec = decreas(e)(s)(ing)</u>	<u>inc = increas(e)(s)(ing)</u>
<u>k = knit</u>	<u>k2tog = knit 2 together</u>
<u>p = purl</u>	<u>rem = remain(s)(ing)</u>
<u>rep = repeat(s)(ing)</u>	<u>RS = right side</u>
<u>St st = Stockinette stitch</u>	<u>st(s) = stitch(es)</u>
<u>WS = wrong side</u>	

Learn to knit instructions: <http://learnToKnit.LionBrand.com>

Every effort has been made to have the knitting and crochet instructions accurate and complete. We cannot be responsible for variance of individual knitters and crocheters, human errors, or typographical mistakes.

We want your project to be a success! If you need help with this or any other Lion Brand pattern, e-mail support is available 7 days per week. Just click [here](#) to explain your problem and someone will help you!

For thousands of free patterns, visit our website www.LionBrand.com

To order visit our website www.lionbrand.com or call: (800) 258-YARN (9276) any time!

When in New York City, visit the Lion Brand Yarn Studio where we have the largest selection of our yarns anywhere and over 100 classes and events monthly.

34 West 15th Street, NY, NY 10011

Copyright ©1998-2013 Lion Brand Yarn Company, all rights reserved. No pattern or other material may be reproduced -- mechanically, electronically, or by any other means, including photocopying -- without written permission of Lion Brand Yarn Company.