



Free Knitting Pattern
Lion Brand® Vanna's Choice® - Vanna's Palettes
Leafy Shawl
Pattern Number: L32289



Free Knitting Pattern from Lion Brand Yarn

Lion Brand® Vanna's Choice® - Vanna's Palettes

Leafy Shawl

Pattern Number: L32289

SKILL LEVEL: Easy + (Level 3)

SIZE: One Size

About 21 x 50 in. (53.5 x 127 cm)

CORRECTIONS: None as of Jun 12, 2014. To check for later updates, click [here](#).

MATERIALS

- 860-148 [Lion Brand Vanna's Choice Yarn: Burgundy](#)
3 Balls (A)
- 865-202 [Lion Brand Vanna's Palettes: Romantic](#)
1 Ball (B)
- [Lion Brand Knitting Needles- Size 9 \[5.5 mm\]](#)
- [Lion Brand Knitting Needles- Size 9 \[5.5 mm\]](#)
- [Lion Brand Large-Eye Blunt Needles \(Set of 6\)](#)

**[Vanna's Choice®](#) (Article #860). 100% Premium Acrylic*

400, 401, 403: 92% Acrylic, 8% Rayon

402: 96% Acrylic, 4% Rayon; package size:

Solids: 3.5 oz (100 g), 170 yards (156 m)

Prints, Tweeds, & Heathers: 3 ozs (85 g), 145 yards (133 meters)

Twists: 2.5 oz (70 g), 121 yards (111 meters)

**[Vanna's Palettes](#) (Article #865). 100% Acrylic; package size: 0.35oz/10.00 gr. (17yds/16m) pull skeins*



GAUGE:

12 1/2 sts + 11 rows = about 4 in. (10 cm) over Lace pattern.

When you match the gauge in a pattern, your project will be the size specified in the pattern and the materials specified in the pattern will be sufficient. The needle or hook size called for in the pattern is based on what the designer used, but it is not unusual for gauge to vary from person to person. If it takes you fewer stitches and rows to make your swatch, try using a smaller size hook or needles; if more stitches and rows, try a larger size hook or needles.

[Making a Gauge Swatch](#)

STITCH EXPLANATION:

ssk (slip, slip, knit) Slip next 2 sts as if to knit, one at a time, to right needle; insert left needle into fronts of these 2 sts and knit them together – 1 st decreased.

yo (yarn over)

An increase that also creates a small decorative hole (eyelet) in the fabric, worked as follows:

1. Bring yarn to front, between the needles.
2. Take yarn to back, over the right needle. This creates the new st. You are now ready to

proceed with the next st as instructed.

PATTERN STITCH

Lace Pattern (multiple of 10 sts)

Row 1 (RS): *P3, k2tog, yo, k1, yo, ssk, p2; rep from * to end.

Row 2: *K3, p5, k2; rep from * to end.

Row 3: *P2, k2tog, k1, (yo, k1) twice, ssk, p1; rep from * to end.

Row 4: *K2, p7, k1; rep from * to end.

Row 5: *P1, k2tog, k2, yo, k1, yo, k2, ssk; rep from * to end.

Row 6: *K1, p9; rep from * to end.

Row 7: *P1, yo, ssk, k5, k2tog, yo; rep from * to end.

Row 8: *K2, p7, k1; rep from * to end.

Row 9: *P2, yo, ssk, k3, k2tog, yo, p1; rep from * to end.

Row 10: *K3, p5, k2; rep from * to end.

Row 11: *P3, yo, ssk, k1, k2tog, yo, p2; rep from * to end.

Row 12: *K4, p3, k3; rep from * to end.

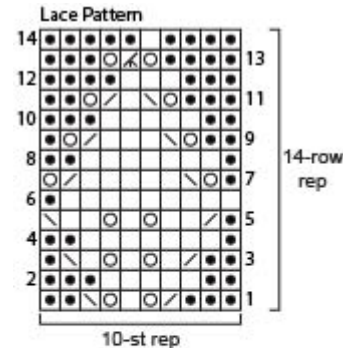
Row 13: *P4, yo, k3tog, yo, p3; rep from * to end.

Row 14: *K4, p1, k5; rep from * to end.

Rep Rows 1-14 for Lace pattern.

NOTES:

1. Shawl is worked with A in Lace pattern with a Garter st (k every row) border.
2. Lace pattern can be worked by following the written instructions or reading the Chart. Read RS rows of Chart from right to left, and WS rows from left to right.
3. Leaves are made separately with B colors of your choice and sewn to Shawl.



- knit on RS, purl on WS
- purl on RS, knit on WS
- yarn over
- k2tog (knit 2 stitches together)
- ssk (slip, slip, knit)
- k3tog (knit 3 stitches together)

SHAWL

With straight needles and A, cast on 66 sts.

Row 1 (RS): Sl 1, k2, place marker (pm), work Row 1 of Lace pattern to last 3 sts, pm, k3.

Row 2: Sl 1, k2, slip marker (sm), work next row of Lace pattern to next marker, sm, k3.

Rep Row 2 until piece measures about 50 in. (127 cm) from beg.

Bind off.

LEAVES (make 26)

Work in B colors of your choice.

Stem

With 2 double pointed needles, cast on 3 sts.

Knit the 3 sts. Do not turn work. *Slide sts to other end of needle and knit them, pulling yarn tightly across the back of the work, (do not turn work); rep from * 2 more times.

Shape Leaf

Change to straight needles or continue working with 2 double pointed needles, as preferred.

Row 1: Sl 1, (k1, yo, k1) all in next st, p1 – 5 sts.

Row 2: Sl 1, purl to end of row.

Row 3: Sl 1, k1, yo, k1, yo, k1, p1 – 7 sts.

Row 4: Sl 1, purl to end of row.

Row 5: Sl 1, k2, yo, k1, yo, k2, p1 – 9 sts.

Row 6: Sl 1, purl to end of row.

Row 7: Sl 1, k2tog, k3, k2tog, p1 – 7 sts.

Row 8: Sl 1, purl to end of row.

Row 9: Sl 1, k2tog, k1, k2tog, p1 – 5 sts.

Row 10: Sl 1, purl to end of row.

Row 11: Sl 1, k3tog, p1 – 3 sts.

Row 12: P3tog – 1 st.

Fasten off.

FINISHING

Sew 13 Leaves evenly spaced across each short edge of Shawl. Weave in ends.

ABBREVIATIONS / REFERENCES	
Click for explanation and illustration	
beg = begin(s)(ning)	k = knit
k2tog = knit 2 together	k3tog = knit 3 together
p = purl	p3tog = purl 3 together
rep = repeat(s)(ing)	RS = right side
sl = slip	st(s) = stitch(es)
WS = wrong side	

Learn to knit instructions: <http://learnToKnit.LionBrand.com>

Every effort has been made to have the knitting and crochet instructions accurate and complete. We cannot be responsible for variance of individual knitters and crocheters, human errors, or typographical mistakes.

We want your project to be a success! If you need help with this or any other Lion Brand pattern, e-mail support is available 7 days per week. Just click [here](#) to explain your problem and someone will help you!

For thousands of free patterns, visit our website www.LionBrand.com

To order visit our website www.lionbrand.com or call: (800) 258-YARN (9276) any time!

When in New York City, visit the Lion Brand Yarn Studio where we have the largest selection of our yarns anywhere and over 100 classes and events monthly.

34 West 15th Street, NY, NY 10011

Copyright ©1998-2013 Lion Brand Yarn Company, all rights reserved. No pattern or other material may be reproduced -- mechanically, electronically, or by any other means, including photocopying -- without written permission of Lion Brand Yarn Company.