



**Free Knitting Pattern**  
**Lion Brand® Bonbons**  
**Mitered Squares Hat**  
Pattern Number: L32263



# Free Knitting Pattern from Lion Brand Yarn

## Lion Brand® Bonbons

### Mitered Squares Hat

Pattern Number: L32263

**SKILL LEVEL:** Easy (Level 2)

**SIZE:** One Size

**Finished Circumference** About 19 in. (48.5 cm), will stretch to fit a range of sizes

**CORRECTIONS:** (applied Mar 31, 2014)

#### Crown (Top of Hat)

**Sew long edges of the 2 Strips together.**

#### MATERIALS

- 601-680 Lion Brand Bonbons Yarn: Crayons  
1 Ball
- The Pom (Single): Ultraviolet
- Lion Brand Knitting Needles- Size 6 [4.00 mm]
- Lion Brand Split Ring Stitch Markers
- Lion Brand Large-Eye Blunt Needles (Set of 6)

*\*Bonbons (Article #601).*

**Cotton:** 100% Cotton. **Care:** Machine Wash Cool, Gentle Cycle, Do Not Bleach, Dry Flat, Low Iron, Dry Clean Any Solvent Except Trichloroethylene.

**Acrylic:** 100% Acrylic. **Care:** Machine Wash and Dry, Do Not Bleach, Do Not Iron, Tumble Dry Normal, Dry Clean and Solvent Except Trichloroethylene.

**Metallic:** 96% Acrylic, 4% Metallic Polyester. **Care:** Machine Wash Cool, Lay Flat to Dry, Do Not Bleach, Do Not Iron, Dry Clean Any Solvent Except Trichloroethylene.; package size:

**Cotton:** Weight Category 2: Sport Weight

8 x .35oz/10g

8 x 28yd/26m

**Acrylic:** Weight Category 3: DK Weight

8 x .35oz/10g

8 x 28yd/26m

**Metallic:** Weight Category 2: Sport Weight

8 x .35oz/10g

8 x 38.3 yd/35m



#### GAUGE:

20 sts + 40 rows = 4 in. (10 cm) in Garter st (k every row).

When you match the gauge in a pattern, your project will be the size specified in the pattern and the materials specified in the pattern will be sufficient. The needle or hook size called for in the pattern is based on what the designer used, but it is not unusual for gauge to vary from person to person. If it takes you fewer stitches and rows to make your swatch, try using a smaller size hook or needles; if more stitches and rows, try a larger size hook or needles.

Making a Gauge Swatch

#### STITCH EXPLANATION:

## **TECHNIQUE EXPLANATION**

### **Cable Cast On**

Transfer needle with sts to left hand. With empty needle in right hand, \*insert right needle between first 2 sts on left needle; wrap yarn and pull through (as if knitting a st); transfer new st to left needle. Repeat from \* for desired number of sts.

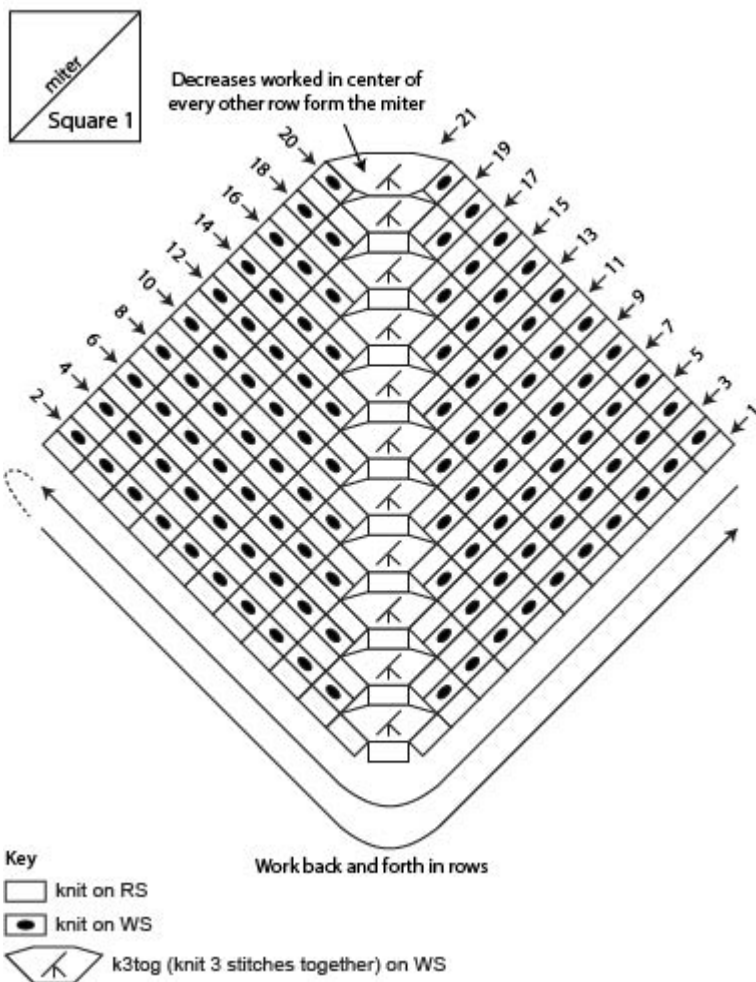
### **NOTES:**

1. Two strips of mitered Squares are made first then sts are picked up across one long edge and crown (top of Hat) is worked.
2. The Squares are added in a modular fashion; sts are picked up across the edge of previous Square(s) to beg the next Square.
3. Each Square is worked back and forth in rows with decreases worked in the center of every other row to form the miter.
4. Work Squares in colors of your choice.
5. To change color, cut the old color leaving an 8 in. (20.5 cm) tail then beg working with new color leaving a beg tail. You may knot the old and new yarn tails together, if desired. When you have finished knitting, unknot the tails and weave them in.

## **HAT**

### **First Strip**

## Step 1: Make Square 1



### Square 1

With color of your choice, cast on 23 sts.

**Row 1 (RS):** Knit.

**Row 2:** K10, k3tog, k10 - 21 sts.

**Row 3 and all odd numbered rows:** Knit.

**Row 4:** K9, k3tog, k9 - 19 sts.

**Row 6:** K8, k3tog, k8 - 17 sts.

**Row 8:** K7, k3tog, k7 - 15 sts.

**Row 10:** K6, k3tog, k6 - 13 sts.

**Row 12:** K5, k3tog, k5 - 11 sts.

**Row 14:** K4, k3tog, k4 - 9 sts.

**Row 16:** K3, k3tog, k3 - 7 sts.

**Row 18:** K2, k3tog, k2 - 5 sts.

**Row 20:** K1, k3tog, k1 - 3 sts.

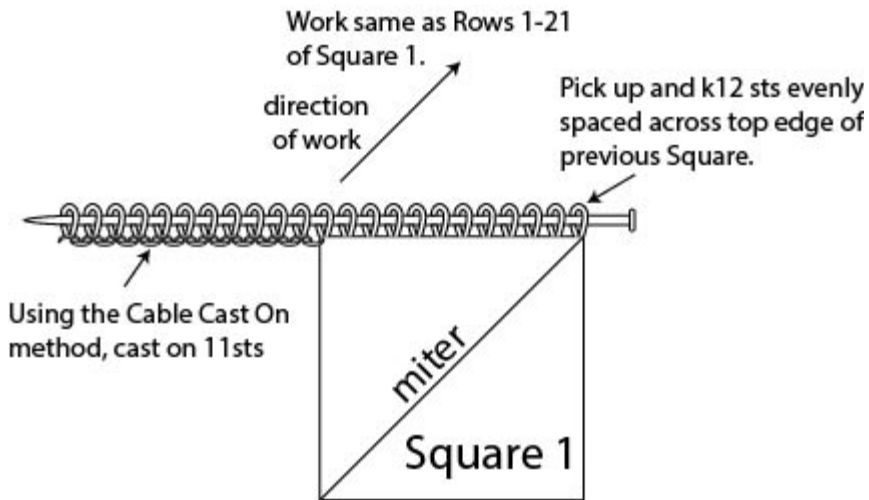
**Row 21 (RS):** K3tog - 1 st.

Fasten off.

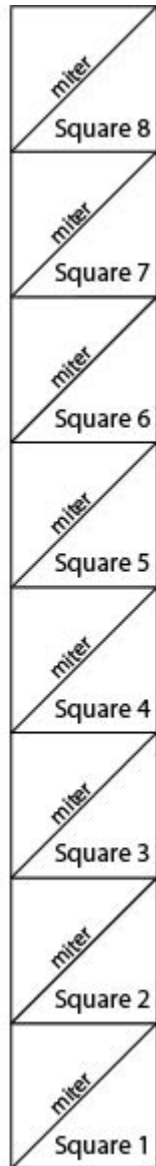
**Note:** With RS of Square facing, Row 1 forms the left side edge and lower edge of the Square.

### Squares 2-8

**Step #2: Make Square 2, beginning across top of Square 1.**



**Step #3: Make 6 more Squares, beginning each across top of previous Square, to make a Strip of 8 Squares. Make a 2nd Strip the same way.**



With RS of previous Square facing and color of your choice, pick up and k12 sts evenly spaced across top

edge of previous Square, using the Cable Cast On method, cast on 11 sts as follows: transfer needle with sts to left hand. With empty needle in right hand, \*insert right needle between first 2 sts on left needle; wrap yarn and pull through (as if knitting a st); transfer new st to left needle. Repeat from \* to cast on 11 sts - 23 sts.

**Rows 1-21:** Work same as Rows 1-21 of Square 1.  
Fasten off.

## Second Strip

### Square 1

With color of your choice, cast on 12 sts, with RS of First Strip of Squares facing, pick up and k11 sts evenly spaced across right edge of Square 1 of First Strip.

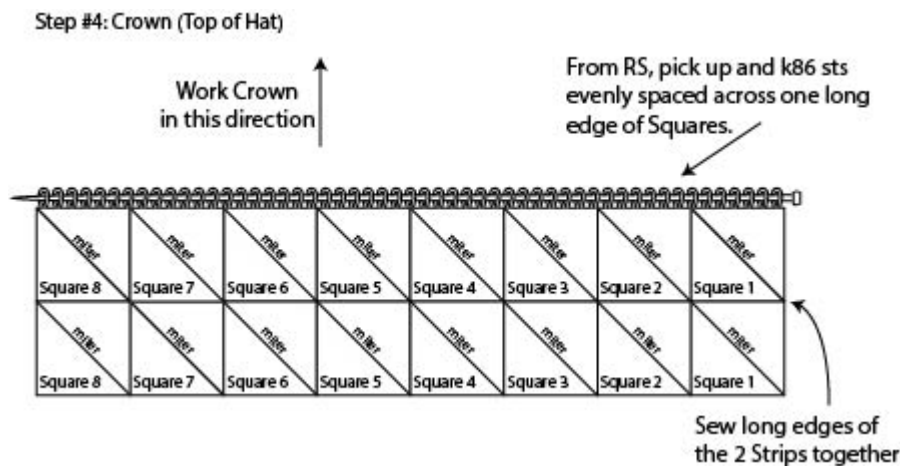
**Rows 1-21:** Work same as Rows 1-21 of Square 1 of First Strip. Fasten off.

### Squares 2-8

With RS of previous Square facing and with color of your choice, pick up and k11 sts evenly spaced across top edge of previous Square, 1 st in corner, and 11 sts evenly spaced along right edge of next Square of First Strip.

**Rows 1-21:** Work same as Rows 1-21 of Square 1 of First Strip. Fasten off.

## Crown (Top of Hat)



**Note:** Work stripes in colors as desired.

Sew long edges of the 2 Strips together.

From RS with first color of your choice, pick up and k86 sts evenly spaced across one long edge of Squares.

Knit 3 rows.

Change to next color and knit 4 rows.

Change to next color.

**Next Row (RS):** K1, k2tog, (k10, k2tog) 6 times, k to end of row - 79 sts at the end of this row.

**Next Row:** Knit.

**Next Row:** K1, k2tog, (k9, k2tog) 6 times, k to end of row - 72 sts.

**Next Row:** Knit.

Change to next color.

**Next Row:** K1, k2tog, (k8, k2tog) 6 times, k to end of row - 65 sts.

**Next Row:** Knit.

**Next Row:** K1, k2tog, (k7, k2tog) 6 times, k to end of row - 58 sts.

**Next Row:** Knit.

Change to next color.

**Next Row:** K1, k2tog, (k6, k2tog) 6 times, k to end of row - 51 sts.

**Next Row:** Knit.

**Next Row:** K1, k2tog, (k5, k2tog) 6 times, k to end of row - 44 sts.

**Next Row:** Knit.

Change to next color.

**Next Row:** K1, k2tog, (k4, k2tog) 6 times, k to end of row - 37 sts.

**Next Row:** Knit.

**Next Row:** K1, k2tog, (k3, k2tog) 6 times, k to end of row - 30 sts.

**Next Row:** Knit.

Change to next color.

**Next Row:** K1, k2tog, (k2, k2tog) 6 times, k to end of row - 23 sts.

**Next Row:** Knit.

**Next Row:** K1, k2tog, (k1, k2tog) 6 times, k to end of row - 16 sts.

**Next Row:** Knit.

**Next Row:** K1, (k2tog) 7 times, k1 - 9 sts.

Cut yarn, leaving a long yarn tail. Thread tail through remaining sts and pull to gather. Knot securely.

## FINISHING

Seam edges to make Hat. Tie pompom to top of Hat. Weave in ends.

<b>ABBREVIATIONS / REFERENCES</b>	
Click for explanation and illustration	
<u>beg = begin(s)(ning)</u>	<u>k = knit</u>
<u>k2tog = knit 2 together</u>	<u>k3tog = knit 3 together</u>
<u>rep = repeat(s)(ing)</u>	<u>RS = right side</u>
<u>st(s) = stitch(es)</u>	

Learn to knit instructions: <http://learnToKnit.LionBrand.com>

---

Every effort has been made to have the knitting and crochet instructions accurate and complete. We cannot be responsible for variance of individual knitters and crocheters, human errors, or typographical mistakes.

We want your project to be a success! If you need help with this or any other Lion Brand pattern, e-mail support is available 7 days per week. Just click [here](#) to explain your problem and someone will help you!

**For thousands of free patterns, visit our website [www.LionBrand.com](http://www.LionBrand.com)**

**To order visit our website [www.lionbrand.com](http://www.lionbrand.com) or call: (800) 258-YARN (9276) any time!**

**When in New York City, visit the Lion Brand Yarn Studio where we have the largest selection of our yarns anywhere and over 100 classes and events monthly.**

**34 West 15th Street, NY, NY 10011**

Copyright ©1998-2013 Lion Brand Yarn Company, all rights reserved. No pattern or other material may be reproduced -- mechanically, electronically, or by any other means, including photocopying -- without written permission of Lion Brand Yarn Company.