



Free Knitting Pattern
Lion Brand® Vanna's Choice®
Modernist Dog Sweater
Pattern Number: L32308



Free Knitting Pattern from Lion Brand Yarn

Lion Brand® Vanna's Choice®

Modernist Dog Sweater

Pattern Number: L32308

SKILL LEVEL: Easy + (Level 3)

SIZE: Varies

XS/S (M, L/1X)

Finished Neck Circumference 9 (12, 14) in. (23 (30.5, 35.5) cm)

Finished Chest 16 (21, 28) in. (40.5 (53.5, 71) cm)

Finished Length 9 (13 1/2, 17 1/2) in. (23 (34.5, 44.5) cm)

CORRECTIONS: None as of Apr 19, 2014. To check for later updates, click [here](#).

MATERIALS

- 860-100 [Lion Brand Vanna's Choice Yarn:](#)

White

1 1, 2 Ball (A)

- 860-153 [Lion Brand Vanna's Choice Yarn:](#)

Black

1 1, 2 Ball (B)

- [Lion Brand Knitting Needles- Size 8 \[5 mm\]](#)

- [Lion Brand Double-Pointed Needles - Size 8](#)

- [Lion Brand Split Ring Stitch Markers](#)

- [Lion Brand Large-Eye Blunt Needles \(Set of 6\)](#)

**[Vanna's Choice®](#) (Article #860). 100% Premium Acrylic*

***400, 401, 403:** 92% Acrylic, 8% Rayon
402: 96% Acrylic, 4% Rayon; package size: **Solids:** 3.5 oz (100 g), 170 yards (156 m)*

***Prints, Tweeds, & Heathers:** 3 ozs (85 g) , 145 yards (133 meters)*

***Twists:** 2.5 oz (70 g), 121 yards (111 meters)*



GAUGE:

15 sts + 30 rows = about 4 in. (10 cm) in Garter st (k every row).

When you match the gauge in a pattern, your project will be the size specified in the pattern and the materials specified in the pattern will be sufficient. The needle or hook size called for in the pattern is based on what the designer used, but it is not unusual for gauge to vary from person to person. If it takes you fewer stitches and rows to make your swatch, try using a smaller size hook or needles; if more stitches and rows, try a larger size hook or needles.

[Making a Gauge Swatch](#)

NOTES:

1. Sweater is worked in 2 pieces, Back and Underpiece.
2. Pieces are seamed, leaving openings for legs.
3. Both pieces are worked in Garter st (k every row) and intarsia colorwork.
4. Use a separate ball of yarn for each section of color. Do not carry unused yarn across WS of work. Twist yarns on WS at each color change to prevent holes.
5. Wind each color of yarn into 3 (4, 5) separate balls before beg.

6. Colorwork can be worked from written instructions or Charts. When working from charts, read RS rows from right to left and WS rows from left to right.
7. Trim is worked around neck, leg openings and lower edge.

BACK

With straight needles and B, cast on 39 (52, 65) sts.

Row 1: *With A, k1; with B, k12; rep from * across.

Row 2 and all WS Rows: Knit, working A sts with A and B sts with B.

Row 3: *With A, k2; with B, k11; rep from * across.

Row 5: *With A, k3; with B, k10; rep from * across.

Row 7: *With A, k4; with B, k9; rep from * across.

Row 9: *With A, k5; with B, k8; rep from * across.

Row 11: *With A, k6; with B, k7; rep from * across.

Row 13: *With A, k7; with B, k6; rep from * across.

Row 15: *With A, k8; with B, k5; rep from * across.

Row 17: *With A, k9; with B, k4; rep from * across.

Row 19: *With A, k10; with B, k3; rep from * across.

Row 21: *With A, k11; with B, k2; rep from * across.

Row 23: *With A, k12; with B, k1; rep from * across.

Rows 25 and 26: With A, knit.

Rep last 26 rows 0 (1, 2) more time(s). **Note:** When you see '0' repeats in an instruction, this means that for your specific size, you don't need to do anything, just skip to the next part of the instruction.

Rows 27 (53, 79)-38 (64, 90): Rep Rows 1-12.

Shape Legs and Neck

Row 39 (65, 91) (Decrease Row): With A, k2tog, k5; *with B, k6; with A, k7; rep from * to last 6 sts; with B, k4, k2tog – 37 (50, 63) sts at the end of this row.

Row 40 (66, 92) and all WS Rows: Knit, working A sts with A and B sts with B.

Row 41 (67, 93): With A, k7; *with B, k5; with A, k8; rep from * to last 4 sts; with B, k4.

Row 43 (69, 95) (Decrease Row): With A, k2tog, k6; *with B, k4; with A, k9; rep from * to last 3 sts; with B, k1, k2tog – 35 (48, 61) sts.

Row 45 (71, 97): With A, k8; *with B, k3; with A, k10; rep from * to last st; with B, k1.

Row 47 (73, 99) (Decrease Row): With A, k2tog, k7; *with B, k2; with A, k11; rep from * to last 13 sts; with B, k2; with A, k9, k2tog – 33 (46, 59) sts.

Row 49 (75, 101): With A, k9; *with B, k1; with A, k12; rep from * to last 11 sts; with B, k1; with A, k10.

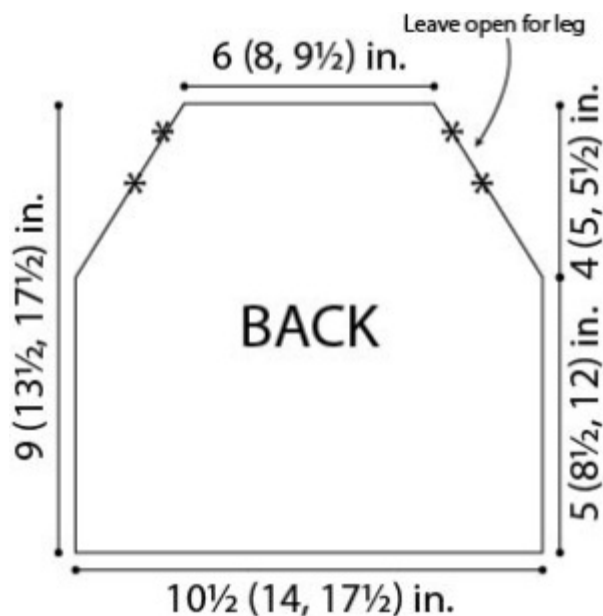
Row 51 (77, 103) (Decrease Row): With A, k2tog, k to last 2 sts, k2tog – 31 (44, 57) sts.

Row 53 (79, 105): With B, k9; with A, k1; *with B, k12; with A, k1; rep from * to last 8 sts; with B, k8.

Row 55 (81, 107) (Decrease Row): With B, k2tog, k7; with A, k2, *with B, k11; with A, k2; rep from * to last 7 sts; with B, k5, k2tog – 29 (42, 55) sts.

Row 57 (83, 109): With B, k8; with A, k3; *with B, k10; with A, k3; rep from * to last 5 sts; with B, k5.

Row 59 (85, 111) (Decrease Row): With B, k2tog, k6; with A, k4; *with B, k9; with A, k4; rep from * to last 4 sts;



with B, k2, k2tog – 27 (40, 53) sts.

Row 61 (87, 113): With B, k7; with A, k5; *with B, k8; with A, k5; rep from * to last 2 sts; with B, k2.

Row 63 (89, 115) (Decrease Row): With B, k2tog, k5; *with A, k6; with B, k7; rep from * to last 7 sts; with A, k5, k2tog – 25 (38, 51) sts.

Row 65 (91, 117) (Decrease Row): With B, k2tog, k4; *with A, k7; with B, k6; rep from * to last 6 sts; with A, k4, k2tog – 23 (36, 49) sts.

Size XS/S ONLY

Rows 67 and 68: With B, knit.

Bind off.

Size M ONLY Row 93 (Decrease Row)

Row 93 (Decrease Row): With B, k2tog, k3; *with A, k8; with B, k5; rep from * to last 5 sts; with A, k3, k2tog – 34 sts.

Row 95 (Decrease Row): With B, k2tog, k2; *with A, k9; with B, k4; rep from * to last 4 sts; with A, k2, k2tog – 32 sts.

Row 97 (Decrease Row): With B, k2tog, k1; *with A, k10; with B, k3; rep from * to last 3 sts; with A, k1, k2tog – 30 sts.

Rows 99 and 100: With B, knit.

Bind off.

Size L/1X ONLY

Row 119 (Decrease Row): With B, k2tog, k3; *with A, k8; with B, k5; rep from * to last 5 sts; with A, k3, k2tog – 47 sts.

Row 121 (Decrease Row): With B, k2tog, k2; *with A, k9; with B, k4; rep from * to last 4 sts; with A, k2, k2tog – 45 sts.

Row 123 (Decrease Row): With B, k2tog, k1; *with A, k10; with B, k3; rep from * to last 3 sts; with A, k1, k2tog – 43 sts.

Row 125 (Decrease Row): With B, k2tog; *with A, k11; with B, k2; rep from * to last 2 sts; with A, k2tog – 41 sts.

Row 127 (Decrease Row): With A, k2tog, k11; *with B, k1; with A, k12; rep from * to last 2 sts; with B, k2tog – 39 sts.

Rows 129 and 130 (Decrease Rows): With B, k2tog, k to last 2 sts, k2tog – 35 sts at the end of Row 130.

Bind off.

UNDERPIECE

With straight needles and B, cast on 20 (26, 39) sts.

Size XS/S ONLY

Row 1 (RS): *With A, k1; with B, k9; rep from * once more.

Row 2 and all WS Rows: Knit, working A sts with A and B sts with B.

Row 3: *With A, k2; with B, k8; rep from * once more.

Row 5: *With A, k3; with B, k7; rep from * once more.

Row 7: *With A, k4; with B, k6; rep from * once more.

Row 9: *With A, k5; with B, k5; rep from * once more.

Row 11: *With A, k6; with B, k4; rep from * once more.

Row 13: *With A, k7; with B, k3; rep from * once more.

Row 15: *With A, k8; with B, k2; rep from * once more.

Row 17: *With A, k9; with B, k1; rep from * once more.

Rows 19 and 20: With A, knit.

Shape Legs and Neck

Row 21 (Decrease Row - RS): With B, k2tog, k8; with A, k1; with B, k7, k2tog – 18 sts.

Row 22 and all WS Rows: Knit, working A sts with A and B sts with B.

Row 23: With A, k1; with B, k8; with A, k2; with B, k7.

Row 25: With A, k2; with B, k7; with A, k3; with B, k6.

Row 27 (Decrease Row): With A, k2tog, k1; with B, k6; with A, k4; with B, k3, k2tog – 16 sts.

Row 29: With A, k3; with B, k5; with A, k5; with B, k3.

Row 31: With A, k4; with B, k4; with A, k6; with B, k2.

Row 33 (Decrease Row): With A, k2tog, k3; with B, k3; with A, k6, k2tog – 14 sts.

Row 35: With A, k5; with B, k2; with A, k7.

Row 37: With A, k6; with B, k1; with A, k7.

Row 39 (Decrease Row): With A, k2tog, k to last 2 sts, k2tog – 12 sts.

Bind off.

Sizes M (L/1X) ONLY

Rows 1-26 (52): Work Rows 1-26 of Back 1 (2) time(s).

Rows 27 (53)-38 (64): Work Rows 1-12 of Back.

Shape Legs and Neck

Row 39 (65) (Decrease Row): With A, k2tog, k5; (with B, k6; with A, k7) 1 (2) time(s); with B, k4, k2tog – 24 (37) sts.

Row 40 (66) and all WS Rows: Knit, working A-colored sts with A and B-colored sts with B.

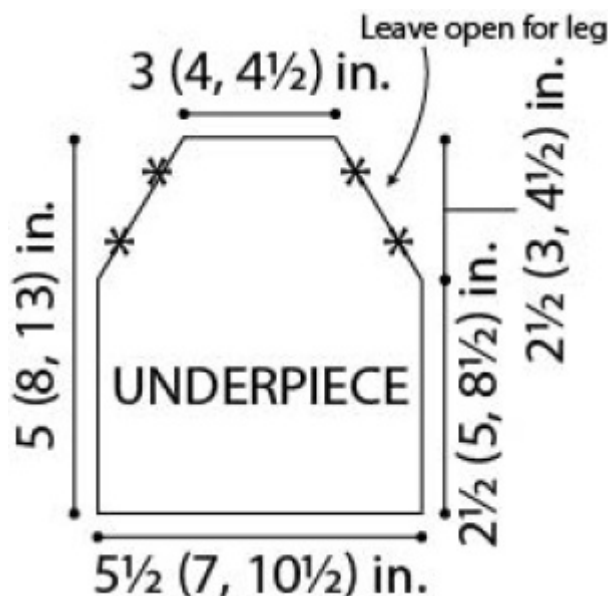
Row 41 (67): With A, k7; (with B, k5; with A, k8) 1 (2) time(s); with B, k4.

Row 43 (69) (Decrease Row): With A, k2tog, k6; (with B, k4; with A, k9) 1 (2) time(s); with B, k1, k2tog – 22 (35) sts.

Row 45 (71): With A, k8; (with B, k3; with A, k10) 1 (2) times; with B, k1.

Row 47 (73) (Decrease Row): With A, k2tog, k7; (with B, k2; with A, k11) 0 (1) time(s); with B, k2, with A, k9, k2tog – 20 (33) sts.

Row 49 (75): With A, k9; (with B, k1; with A, k12) 0 (1)



time(s); with B, k1; with A, k10.

Row 51 (77) (Decrease Row): With A, k2tog, k to last 2 sts, k2tog – 18 (31) sts.

Row 53 (79): With B, k9; (with A, k1; with B, k12) 0 (1) time(s); with A, k1; with B, k8.

Row 55 (81) (Decrease Row): With B, k2tog, k7; (with A, k2; with B, k11) 0 (1) time(s); with A, k2; with B, k5, k2tog – 16 (29) sts.

Row 57 (83): With B, k8; (with A, k3; with B, k10) 0 (1) time(s); with A, k3; with B, k5.

Row 59 (85) (Decrease Row): With B, k2tog, k6; (with A, k4; with B, k9) 0 (1) time(s); with A, k4; with B, k2, k2tog – 14 (27) sts.

Size M ONLY

Bind off.

Size L/1X ONLY

Row 87 (Decrease Row): With B, k2tog, k5; with A, k5; with B, k8; with A, k5; with B, k2tog – 25 sts.

Row 89 (Decrease Row): With B, k2tog, k4; with A, k6; with B, k7; with A, k4, k2tog – 23 sts.

Row 91 (Decrease Row): With B, k2tog, k3; with A, k7; with B, k6; with A, k3, k2tog – 21 sts.

Row 93 (Decrease Row): With B, k2tog, k2; with A, k8; with B, k5; with A, k2, k2tog – 19 sts.

Row 95 (Decrease Row): With B, k2tog, k1; with A, k9; with B, k4; with A, k1, k2tog – 17 sts.

Bind off.

FINISHING

Beg at neck, sew sides of Underpiece to Back for 1 1/2 (2, 2 1/2) in. (4 (5, 6.5) cm); leave next 1 1/2 (2, 2 1/2) in. (4 (5, 6.5) cm) open for legs, then sew remainder of Underpiece to Back. Note that the first 18 (26, 26) rows of the Back remain unsewn, this is the Back Flap.

Neck Trim

From RS, with double pointed needles and B, pick up and k35 (44, 52) sts evenly spaced around neck edge.

Without working any rnds, bind off.

Leg Opening Trim

From RS, with double pointed needles and B, pick up and k12 (16, 20) sts evenly spaced around one leg opening. Work Trim as for Neck Trim.

Rep on opposite leg opening.

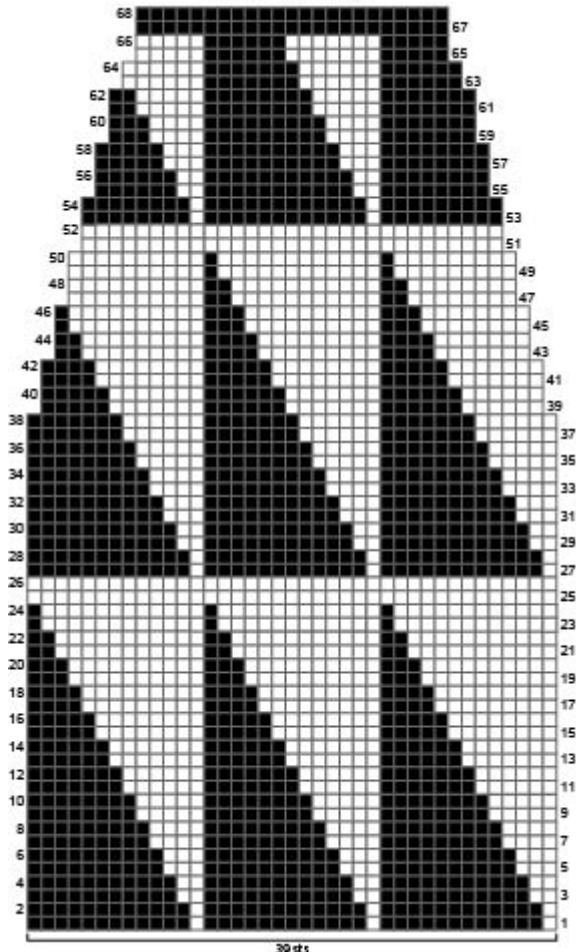
Lower Edge Trim

From RS, with straight needles and B, pick up and k9 (13, 13) sts along side edge of first 18 (26, 26) rows of Back (Back Flap), pick up and k20 (26, 39) sts evenly spaced across lower edge of Underpiece, pick up and k9 (13, 13) sts evenly spaced along edge of opposite edge of Back Flap – 38 (52, 65) sts.

Without working any rows, bind off.

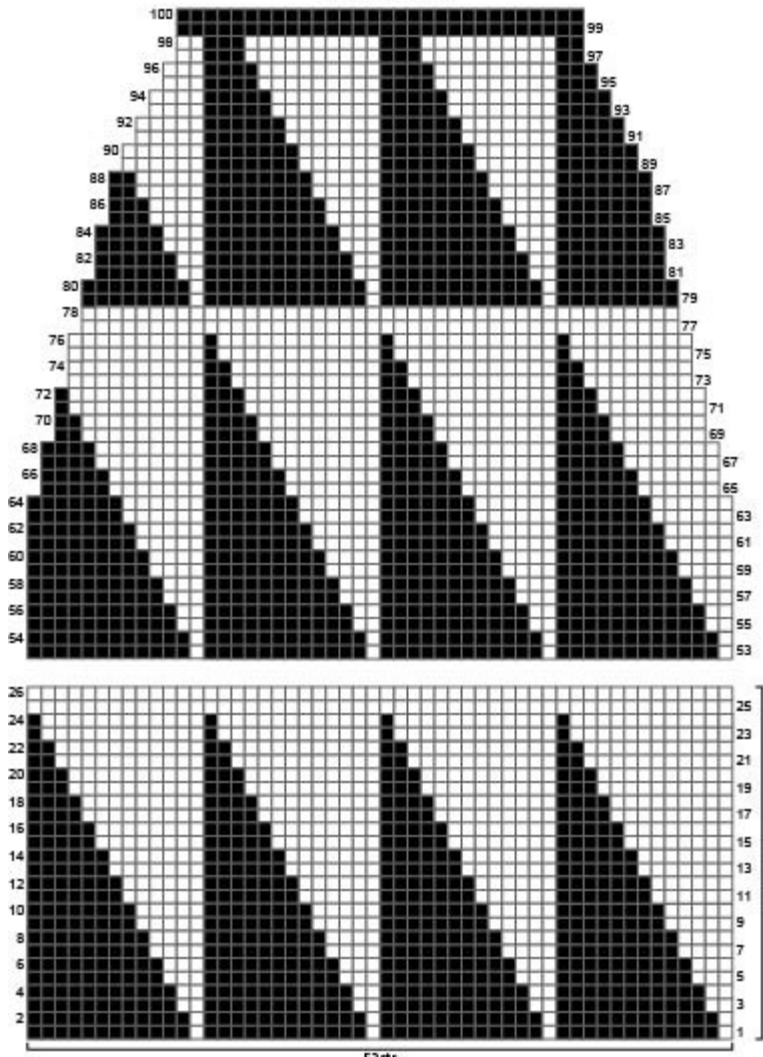
Weave in ends.

BACK - SIZE XS/S

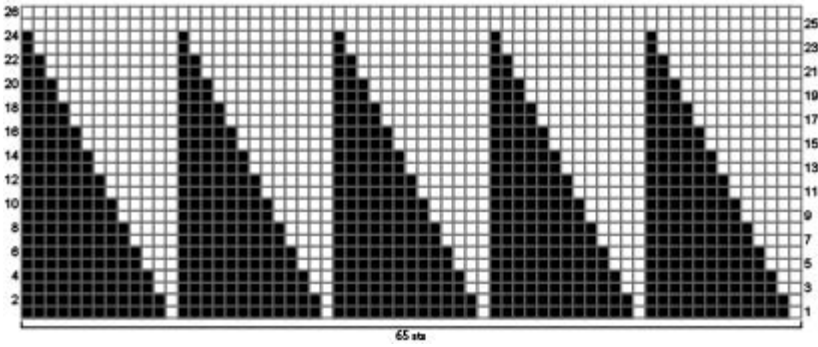
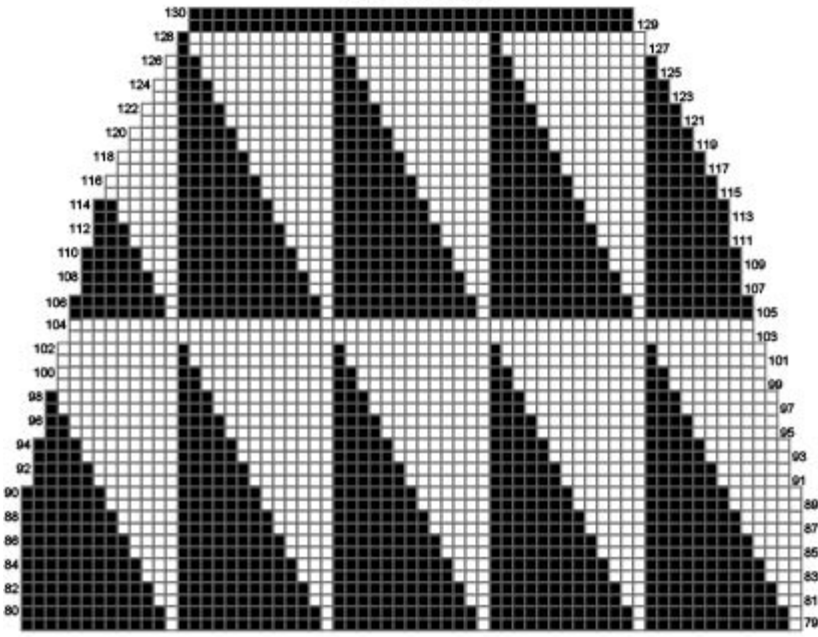


39 st

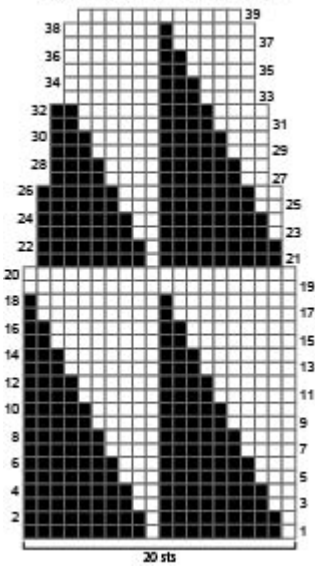
BACK - SIZE M



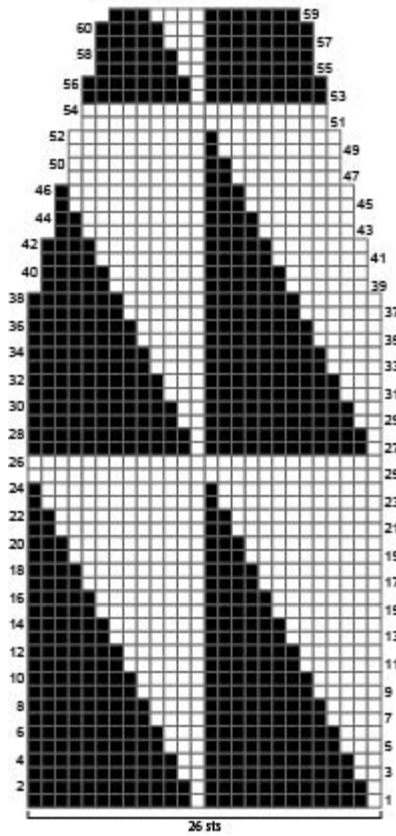
BACK - SIZE L/1X



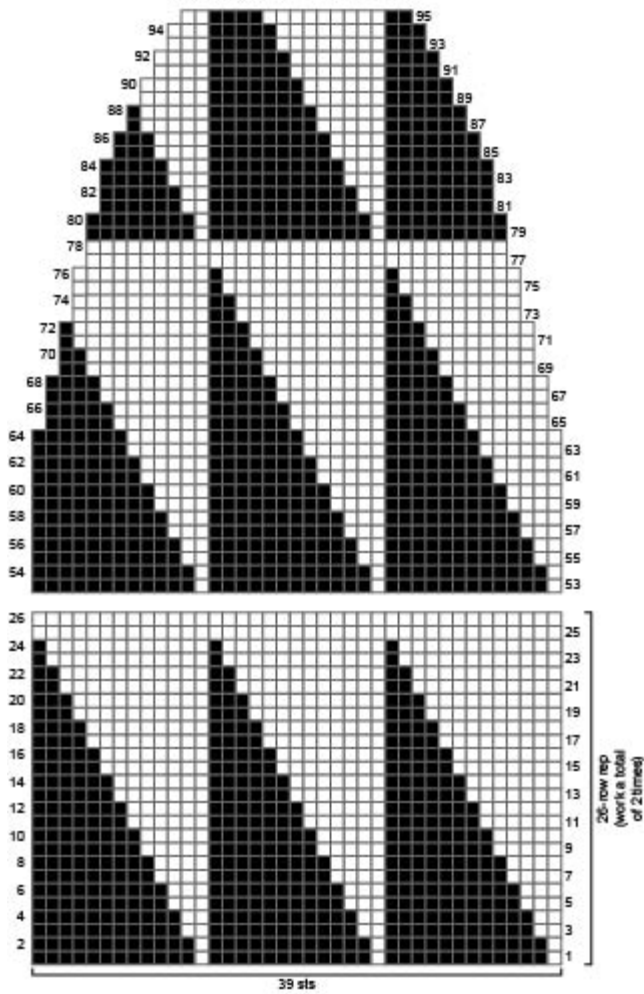
UNDERPIECE - SIZE XS/S



UNDERPIECE - SIZE M



UNDERPIECE - SIZE L/1X



ABBREVIATIONS / REFERENCES

Click for explanation and illustration

beg = begin(s)(ning)	k = knit
k2tog = knit 2 together	rep = repeat(s)(ing)
rnd(s) = round(s)	RS = right side
st(s) = stitch(es)	WS = wrong side

Learn to knit instructions: <http://learnToKnit.LionBrand.com>

Every effort has been made to have the knitting and crochet instructions accurate and complete. We cannot be responsible for variance of individual knitters and crocheters, human errors, or typographical mistakes.

We want your project to be a success! If you need help with this or any other Lion Brand pattern, e-mail support is available 7 days per week. Just click [here](#) to explain your problem and someone will help you!

For thousands of free patterns, visit our website www.LionBrand.com

To order visit our website www.lionbrand.com or call: (800) 258-YARN (9276) any time!

When in New York City, visit the Lion Brand Yarn Studio where we have the largest selection of our yarns anywhere and over 100 classes and events monthly.

34 West 15th Street, NY, NY 10011

Copyright ©1998-2013 Lion Brand Yarn Company, all rights reserved. No pattern or other material may be reproduced -- mechanically, electronically, or by any other means, including photocopying -- without written permission of Lion Brand Yarn Company.