



Free Knitting Pattern
Lion Brand® Vanna's Choice® - Vanna's Palettes
Stranded Colorwork Tote
Pattern Number: L32299



Free Knitting Pattern from Lion Brand Yarn

Lion Brand® Vanna's Choice® - Vanna's Palettes Stranded Colorwork Tote

Pattern Number: L32299

SKILL LEVEL: Intermediate (Level 3)

SIZE: One Size

About 14 in. (35.5 cm) tall x 14 1/2 (37 cm) wide

CORRECTIONS: (applied Jul 17, 2014)

COLORS

~~Aqua (C)~~

~~Sapphire (D)~~

~~Cherry (E)~~

~~Magenta (F)~~

~~Scarlet (G)~~

~~Radiant Orange (H)~~

~~Radiant Yellow (I)~~

~~Lime (J)~~

Bright Blue (C)

Medium Blue (D)

Bright Red (E)

Bright Magenta (F)

Medium Red (G)

Bright Orange (H)

Bright Yellow (I)

Bright Green (J)

Chart corrected.

MATERIALS

- 860-108 Lion Brand Vanna's Choice Yarn: Dusty Blue
1 Ball (A)
- 860-110 Lion Brand Vanna's Choice Yarn: Navy
1 Ball (B)
- 865-201 Lion Brand Vanna's Palettes: Happy
1 Ball
- Lion Brand Split Ring Stitch Markers
- Lion Brand Large-Eye Blunt Needles (Set of 6)
- Additional Materials
Circular knitting needle size
10.5 (6.5 mm), 24 in. (61 cm) long

**Vanna's Choice® (Article #860). 100% Premium Acrylic*

400, 401, 403: 92% Acrylic, 8% Rayon
402: 96% Acrylic, 4% Rayon; package size: **Solids:** 3.5 oz (100 g), 170 yards (156 m)

Prints, Tweeds, & Heathers: 3 ozs (85 g), 145 yards (133 meters)

Twists: 2.5 oz (70 g), 121 yards (111 meters)

**Vanna's Palettes (Article #865). 100% Acrylic; package size: 0.35oz/10.00 gr. (17yds/16m) pull skeins*



Piece of heavy cardboard, 4 in. (10 cm) wide (for tassels)

GAUGE:

14 sts + 24 rnds = about 4 in. (10 cm) in Seed st worked in rnds

When you match the gauge in a pattern, your project will be the size specified in the pattern and the materials specified in the pattern will be sufficient. The needle or hook size called for in the pattern is based on what the designer used, but it is not unusual for gauge to vary from person to person. If it takes you fewer stitches and rows to make your swatch, try using a smaller size hook or needles; if more stitches and rows, try a larger size hook or needles.

Making a Gauge Swatch

STITCH EXPLANATION:

PATTERN STITCH

Seed St worked in rnds (over odd number of sts)

Rnd 1: K1, *p1, k1; rep from * to end of rnd.

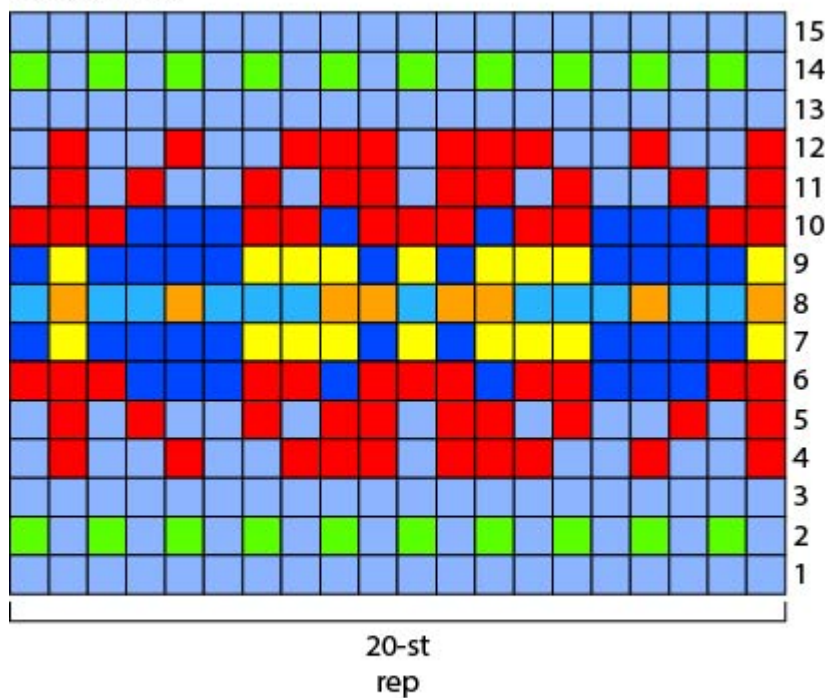
Rnd 2: P the knit sts, and k the purl sts.

Rep Rnd 2 for Seed st worked in rnds.

NOTES:

1. Tote is worked in rnds beg at lower edge. Straps are worked separately and sewn to Tote.
2. A section of Tote is worked in stranded colorwork using 2 colors per row. Carry color not in use across WS of piece.
3. Colorwork can be worked from written instructions or from the chart. Read each rnd of chart from right to left.

Fair Isle Chart



■ Vanna's Choice: #108 Dusty Blue (A)

■ Vanna's Choice: #110 Navy (B)



Colors for VANNA'S PALETTES

Bright Blue (C)
Medium Blue (D)
Bright Red (E)
Bright Magenta (F)
Medium Red (G)
Bright Orange (H)
Bright Yellow (I)
Bright Green (J)

STRIPE SEQUENCE

*Work 1 rnd each with A, C, D, B, E, F, G, H, I, and J; rep from * for Stripe Sequence.

TOTE

With A, cast on 105 sts. Place marker for beg of rnd. Join by working the first st on left hand needle with the working yarn from the right hand needle and being careful not to twist sts.

Knit 1 rnd.

Work in Seed st worked in rnds, beg with 1 rnd of A and changing color every rnd following Stripe Sequence, until piece measures about 9 1/2 in. (24 cm) from beg.

Next Rnd: With A, (k16, k2tog) 5 times, k to end of rnd – 100 sts.

Colorwork Pattern

Rnd 1 (RS): With A, knit.

Rnd 2: *With A, k1; with J, k1; rep from * to end of rnd.

Rnd 3: With A, knit.

Rnd 4: *(With G, k1; with A, k2) twice, with G, k3; with A, k1; with G, k3; (with A, k2, with G, k1) twice, with A, k1; rep from * to end of rnd.

Rnd 5: *With G, k1; with A, k1; with G, k1; with A, k2; with G, k1; with A, k1; with H, k2; with A, k1; with G, k2; with A, k1; with G, k1; with A, k2; with G, k1; with A, k1; with G, k1; with A, k1; rep from * to end of rnd.

Rnd 6: *With G, k2; with B, k3; with G, k2; with B, k1; with G, k3; with B, k1; with G, k2; with B, k3; with G, k3; rep from * to end of rnd.

Rnd 7: *With I, k1; with B, k4; with I, k3; with B, k1; with I, k1; with B, k1; with I, k3; with B, k4; with I, k1; with B, k1; rep from * to end of rnd.

Rnd 8: *With H, k1; with D, k2; with H, k1; with D, k3; with H, k2; with D, k1; with H, k2; with D, k3; with H, k1; with D, k2; with H, k1; with D, k1; rep from * to end of rnd.

Rnd 9: Rep Rnd 7.

Rnd 10: Rep Rnd 6.

Rnd 11: Rep Rnd 5.

Rnd 12: Rep Rnd 4.

Rnd 13: Rep Rnd 3.

Rnd 14: Rep Rnd 2.

Rnd 15: Rep Rnd 1.

Change to B.

With B, knit 10 rnds.

Bind off loosely.

STRAPS (make 2)

With B, cast on 80 sts.

Working back and forth in rows on circular needle, knit 10 rows.

Bind off loosely.

FINISHING

Flatten Tote and sew lower edge closed.

Sew ends of one Strap to inside front of Tote, about 1 in. (2.5 cm) below top edge and 2 in. (5 cm) from side edges. Rep with second Strap on back of Tote.

Tassels (make 2)

Wrap E around 4 in. (10 cm) cardboard about 15 times. Cut a 10 in. (25.5 cm) length of E and thread into large-eyed blunt needle. Insert needle under all strands at upper edge of cardboard. Pull tightly and knot securely near strands. Cut yarn loops at lower edge of cardboard. Cut an 8 in. (20.5 cm) length of E and wrap tightly around loops 1 in. (2.5 cm) below top knot to form Tassel neck. Knot securely; thread yarn ends into needle and weave to center of Tassel. Trim Tassel ends evenly. Sew one Tassel to each bottom corner of Tote.

Weave in ends.

ABBREVIATIONS / REFERENCES	
Click for explanation and illustration	
beg = begin(s)(ning)	k = knit
k2tog = knit 2 together	p = purl
rep = repeat(s)(ing)	rnd(s) = round(s)
RS = right side	st(s) = stitch(es)

Learn to knit instructions: <http://learnToKnit.LionBrand.com>

Every effort has been made to have the knitting and crochet instructions accurate and complete. We cannot be responsible for variance of individual knitters and crocheters, human errors, or typographical mistakes.

We want your project to be a success! If you need help with this or any other Lion Brand pattern, e-mail support is available 7 days per week. Just click [here](#) to explain your problem and someone will help you!

For thousands of free patterns, visit our website www.LionBrand.com

To order visit our website www.lionbrand.com or call: (800) 258-YARN (9276) any time!

When in New York City, visit the Lion Brand Yarn Studio where we have the largest selection of our yarns anywhere and over 100 classes and events monthly.

34 West 15th Street, NY, NY 10011

Copyright ©1998-2014 Lion Brand Yarn Company, all rights reserved. No pattern or other material may be reproduced -- mechanically, electronically, or by any other means, including photocopying -- without written permission of Lion Brand Yarn Company.