



Free Knitting Pattern
Lion Brand® Vanna's Choice®
Traffic Pullover
Pattern Number: L32280



Designed by Amy Bahrt.

Free Knitting Pattern from Lion Brand Yarn

Lion Brand® Vanna's Choice®

Traffic Pullover

Pattern Number: L32280

SKILL LEVEL: Intermediate (Level 3)

SIZE: Child (Multiple Sizes)

2 years (4 years, 6 years)

Finished Chest 28 (31, 33) in. (71 (78 1/2, 84) cm)

Finished Length 14 1/2 (16, 18) in. (37 (40.5, 45.5) cm)

CORRECTIONS: None as of Feb 16, 2014. To check for later updates, click [here](#).

MATERIALS

- 860-149 Lion Brand Vanna's Choice Yarn: Silver Grey
3 4, 5 Balls (A)
- 860-151 Lion Brand Vanna's Choice Yarn: Charcoal Grey
1 1, 1 Ball (B)
- 860-099 Lion Brand Vanna's Choice Yarn: Linen
1 1, 1 Ball (C)
- 860-153 Lion Brand Vanna's Choice Yarn: Black
1 1, 1 Ball (D)
- 860-172 Lion Brand Vanna's Choice Yarn: Kelly Green
1 1, 1 Ball (E)
- 860-109 Lion Brand Vanna's Choice Yarn: Colonial Blue
1 1, 1 Ball (F)
- 860-158 Lion Brand Vanna's Choice Yarn: Mustard
1 1, 1 Ball (G)
- 860-134 Lion Brand Vanna's Choice Yarn: Terracotta
1 1, 1 Ball (H)
- Lion Brand Knitting Needles - Size 7 [4.5 mm]
- Lion Brand Knitting Needles- Size 9 [5.5 mm]
- Lion Brand Stitch Holders
- Lion Brand Split Ring Stitch Markers
- Lion Brand Large-Eye Blunt Needles (Set of 6)

**Vanna's Choice® (Article #860). 100% Premium Acrylic*

400, 401, 403: 92% Acrylic, 8% Rayon
402: 96% Acrylic, 4% Rayon; package size: **Solids:** 3.5 oz (100 g), 170 yards (156 m)

Prints, Tweeds, & Heathers: 3 ozs (85 g) , 145 yards (133 meters)

Twists: 2.5 oz (70 g), 121 yards (111 meters)



GAUGE:

16 sts + 22 rows = 4 in. (10 cm) in St st (k on RS, p on WS) with larger needles.

BE SURE TO CHECK YOUR GAUGE. When you match the gauge in a pattern, your project will be the size specified in the pattern and the materials specified in the pattern will be sufficient. If it takes you fewer stitches and rows to make a 4 in. [10 cm] square, try using a smaller size hook or needles; if more stitches and rows, try a larger size hook or needles.

STITCH EXPLANATION:

Surface Chain Stitch

With yarn threaded into blunt needle, bring needle from WS to RS through piece. *Hold short length of yarn on front forming a small loop. Insert needle back into where it emerged, do not pull tight. Bring needle back through work a short distance away from first insertion point and through small loop; rep from * for desired length.

PATTERN STITCHES

K1, p1 Rib (multiple of 2 sts + 1)

Row 1: K1, *p1, k1; rep from * to end of row.

Row 2: K the knit sts and p the purl sts.

Rep Row 2 for K1, p1 Rib.

Road Pattern (multiple 5 sts +2)

Row 1 (RS): With B, knit.

Row 2: With B, purl.

Note: For Rows 3 and 4, carry B and C across WS of work.

Row 3: *With B, k2, with C, k3; rep from * to last 2 sts, with B, k2.

Row 4: *With B, p2, with C, k3; rep from * to last 2 sts, with B, p2.

Row 5: With B, knit.

Row 6: With B, purl.

Rep Rows 1-6 for Road patt.

Highway Stitch (worked over 5 sts)

Row 1: With B, k2, with C, k1, with B, k2.

Row 2: With B, p2, with C, k1, with B, p2.

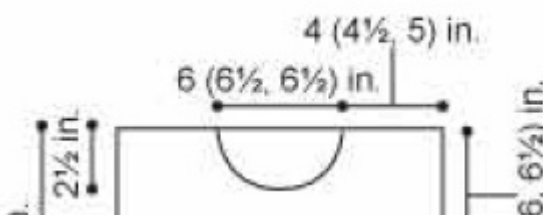
Rep Rows 1 and 2 for Highway st.

NOTES:

1. Pullover is worked in 4 pieces, Back, Front and 2 Sleeves.
2. Front of Pullover is worked in intarsia and stranded colorwork, following Charts.
3. When working from Chart, work in St st (k on RS, p on WS), reading RS rows from right to left and WS rows from left to right.
4. When working in intarsia colorwork, do not carry unused color(s) across WS of work. Use a separate ball of yarn for each section. Wind into separate balls as needed. Twist yarns on WS to prevent holes.
5. When working in stranded colorwork, carry color not in use across WS of work.
6. If desired, small areas of color may be worked in Duplicate st when piece is completed.
7. End with a WS row means that the last row you work should be a WS row, and the next row that you are ready to work will be a RS row.
8. When you see "- 12 sts" in the instructions, this lets you know how many sts you will have at the end of that specific row.

BACK

With smaller needles and A, cast on 57 (63, 67) sts.



Work in K1, p1 rib for 8 rows.

Begin Road Patt

Change to larger needles and B.

Next Row (RS): Work Row 1 of Road patt to last 0 (1, 0) st, with B, k 0 (1, 0).

Note: When you see "0" in an instruction, it means that for your specific size, you do not need to work that particular instruction, simply skip ahead to the next section.

Next Row: With B, p 0 (1, 0), work next row of Road patt to end.

Continue to work in Road patt, keeping 0 (1, 0) st outside patt in St st (k on RS, p on WS) with B, until Row 6 of patt has been completed.

Change to A, and work in St st (k on RS, p on WS) with A until piece measures 14 1/2 (16, 18) in. (37 (40.5, 45.5) cm) from beg.

Bind off 16 (19, 21) sts at beg of next 2 rows - 25 sts rem.

Slip rem 25 sts to a st holder for neck.

FRONT

Cast on and work as for Back until Row 6 of Road patt has been completed.

Begin Truck Chart

Next Row (RS): With A, k11 (14, 16), beg with Row 1, work Truck Chart across next 24 sts, with A, k5, work Highway st across next 5 sts, with A, k12 (15, 17).

Keeping patterns as established and rem sts in St st, work until all rows of Chart have been completed.

Keeping Highway sts as established and rem sts in St st with A only, work 4 rows.

Begin Road patt

Next Row (RS): Beg with Row 1, work Road patt across to last 0 (1, 0) st, with Bm k 0 (1, 0).

Work as established until Row 6 of Road patt has been completed.

Begin Orange Car Chart

Next Row (RS): With A, k9 (12, 14), beg with Row 1, work Highway st across next 5 sts, with A, k4, work Orange Car Chart across next 20 sts, with A, k4, work Light Chart across next 6 sts, with A, k9 (12, 14).

Keeping patterns as established and rem sts in St st with A, work until all rows of Charts have been completed.

Keeping Highway st as established and rem sts in St st with A only, work until piece measures 12 (13 1/2, 15 1/2) in. (30.5 (34.5, 39.5) cm) from beg, end with a WS row as the last row you work.

Keeping Highway st as established and rem sts in St st with A only, work until piece measures 12 (13 1/2, 15 1/2) in. (30.5 (34.5, 39.5) cm) from beg, end with a WS row as the last row you work.

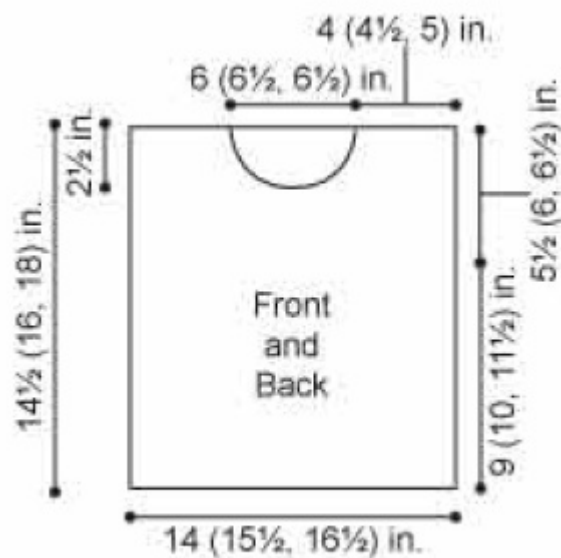
Shape Neck

Mark center 11 sts for neck.

Next Row (RS): Keeping Highway st as established and rem sts in St st with A only, work to marked center 11 sts, join a 2nd ball of yarn and bind off 11 sts, work to end of row - 23 (26, 28) sts rem each side.

Working both sides at the same time with separate balls of yarn, bind off 3 sts from each neck edge once, then 2 sts once - 18 (21, 23) sts rem each side.

Dec 1 st at each neck edge twice - 16 (19, 21) sts rem each side.



Work even until piece measures same length as Back.
Bind off.

SLEEVES (make 2)

With smaller needles and A, cast on 33 (37, 37) sts.

Work in K1, p1 Rib for 7 rows.

Purl 1 row, inc 4 (5, 5) sts evenly spaced across row - 37 (42, 42) sts.

Begin Road patt

Change to larger needles and beg with Row 1, work Rows 1-6 of Road patt.

Change to work in St st with A only, AT THE SAME TIME, inc 1 st each side every 6th row 6 (5, 7) times - 49 (52, 56) sts.

Work even until piece measures 11 1/2 (13, 14) in. (29 (cm), or desired length, from beg.

Bind off.



FINISHING

Sew one shoulder seam.

Neckband

With RS facing and smaller needles and A, starting at neck edge of unsewn shoulder, pick up and knit 71 sts evenly spaced around neck.

Work in K1, p1 rib for 7 rows.

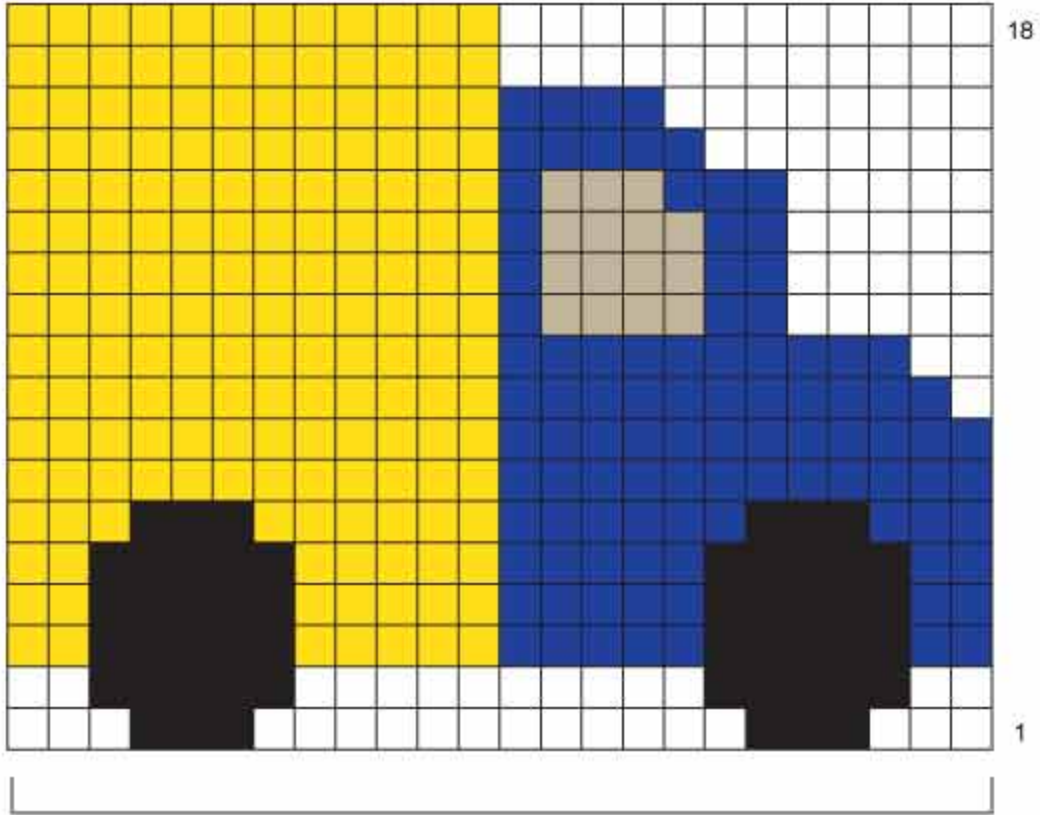
Bind off in rib.

Sew shoulder and neckband seam. Place markers 6 (6 1/2, 7) in. (15 (16.5, 18) cm) down from shoulders on Front and Back. Sew tops of sleeves between markers. Sew side and Sleeve seams.

With D, work surface chain st around each wheel. With E, work surface chain st around Light. Work surface chain st around lights with F, G and H.

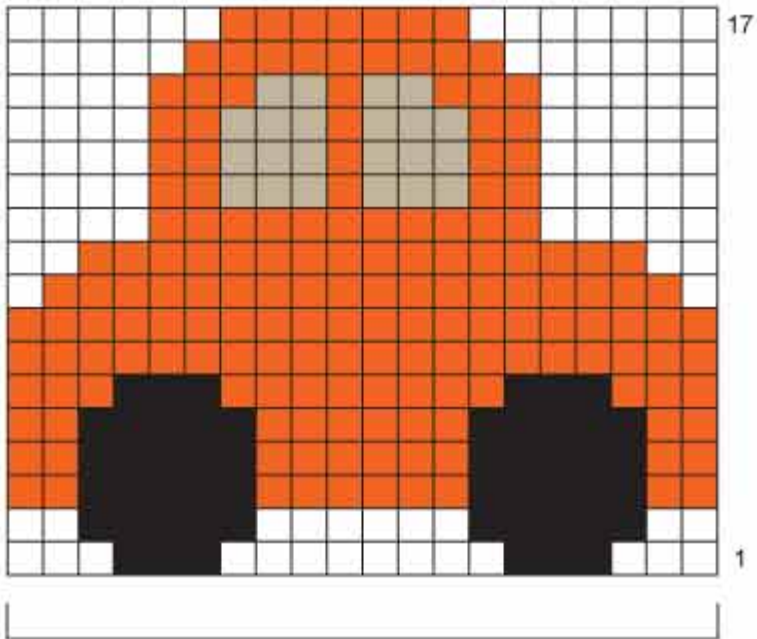
Weave in ends.

Truck Chart

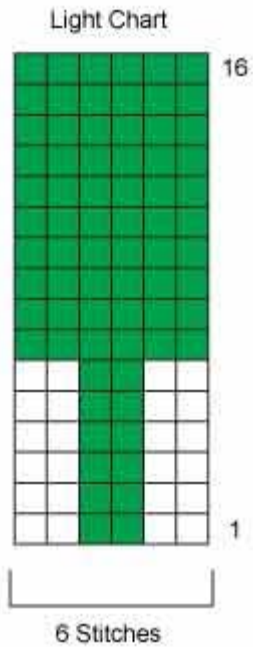


24 Stitches

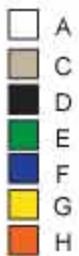
Orange Car Chart



20 Stitches



Stitch Key



ABBREVIATIONS / REFERENCES

Click for explanation and illustration

<u>beg = begin(s)(ning)</u>	<u>dec = decreas(e)(s)(ing)</u>
<u>inc = increas(e)(s)(ing)</u>	<u>k = knit</u>
<u>p = purl</u>	<u>rem = remain(s)(ing)</u>
<u>rep = repeat(s)(ing)</u>	<u>RS = right side</u>
<u>St st = Stockinette stitch</u>	<u>st(s) = stitch(es)</u>
<u>WS = wrong side</u>	

Learn to knit instructions: <http://learnToKnit.LionBrand.com>

Every effort has been made to have the knitting and crochet instructions accurate and complete. We cannot be responsible for variance of individual knitters and crocheters, human errors, or typographical mistakes.

We want your project to be a success! If you need help with this or any other Lion Brand pattern, e-mail support is available 7 days per week. Just click [here](#) to explain your problem and someone will help you!

**For thousands of free patterns, visit our website www.LionBrand.com
To order visit our website www.lionbrand.com or call: (800) 258-YARN (9276) any time!**

**When in New York City, visit the Lion Brand Yarn Studio where we have the largest selection of
our yarns anywhere and over 100 classes and events monthly.
34 West 15th Street, NY, NY 10011**

Copyright ©1998-2013 Lion Brand Yarn Company, all rights reserved. No pattern or other material may be reproduced -- mechanically, electronically, or by any other means, including photocopying -- without written permission of Lion Brand Yarn Company.