



Free Knitting Pattern
Lion Brand® Vanna's Choice®
Traffic Throw
Pattern Number: L32281



Designed by Amy Bahrt.

Free Knitting Pattern from Lion Brand Yarn

Lion Brand® Vanna's Choice®

Traffic Throw

Pattern Number: L32281

SKILL LEVEL: Intermediate (Level 3)

SIZE: One Size

30 1/2 x 34 in. (77.5 x 86.5 cm)

CORRECTIONS: None as of Feb 23, 2014. To check for later updates, click [here](#).

MATERIALS

- 860-149 Lion Brand Vanna's Choice Yarn: Silver Grey
3 Balls (A)
- 860-151 Lion Brand Vanna's Choice Yarn: Charcoal Grey
2 Balls (B)
- 860-099 Lion Brand Vanna's Choice Yarn: Linen
1 Ball (C)
- 860-153 Lion Brand Vanna's Choice Yarn: Black
1 Ball (D)
- 860-172 Lion Brand Vanna's Choice Yarn: Kelly Green
1 Ball (E)
- 860-109 Lion Brand Vanna's Choice Yarn: Colonial Blue
1 Ball (F)
- 860-158 Lion Brand Vanna's Choice Yarn: Mustard
1 Ball (G)
- 860-134 Lion Brand Vanna's Choice Yarn: Terracotta
1 Ball (H)
- Lion Brand Knitting Needles- Size 9 [5.5 mm]
- Lion Brand Large-Eye Blunt Needles (Set of 6)
- Additional Materials
Circular knitting needle size 9 (5.5 mm), 36 in. (91.5 cm) long

**Vanna's Choice® (Article #860).*

100% Premium Acrylic

400, 401, 403: *92% Acrylic, 8% Rayon*

402: *96% Acrylic, 4% Rayon; package size: **Solids:** 3.5 oz (100 g), 170 yards (156 m)*

Prints, Tweeds, & Heathers: *3 ozs (85 g), 145 yards (133 meters)*

Twists: *2.5 oz (70 g), 121 yards (111 meters)*



GAUGE:

16 sts + 22 rows = 4 in. (10 cm) in St st (k on RS, p on WS).

BE SURE TO CHECK YOUR GAUGE. When you match the gauge in a pattern, your project will be the size specified in the pattern and the materials specified in the pattern will be sufficient.

If it takes you fewer stitches and rows to make a 4 in. [10 cm] square, try using a smaller size hook or needles; if more stitches and rows, try a larger size hook or needles.

STITCH EXPLANATION:

Surface Chain Stitch

With yarn threaded into blunt needle, bring needle from WS to RS through piece. *Hold short length of yarn on front forming a small loop. Insert needle back into where it emerged, do not pull tight. Bring needle back through work a short distance from previous insertion point and through small loop; rep from * for desired length.

PATTERN STITCHES

Road Pattern (multiple 5 sts + 2)

Row 1 (RS): With B, knit.

Row 2: With B, purl.

Note: For Rows 3 and 4, carry B and C across WS of work.

Row 3: *With B, k2, with C, k3; rep from * to last 2 sts, with B, k2.

Row 4: *With B, p2, with C, k3; rep from * to last 2 sts, with B, p2.

Row 5: With B, knit.

Row 6: With B, purl.

Rep Rows 1-6 for Road patt.

Highway Stitch (worked over 5 sts)

Row 1: With B, k2, with C, k1, with B, k2.

Row 2: With B, p2, with C, k1, with B, p2.

Rep Rows 1 and 2 for Highway st.

NOTES:

1. A circular needle is used to accommodate the large number of sts. Work back and forth on circular needle as if working on straight needles.
2. Throw is worked in intarsia and stranded colorwork, following Charts.
3. When working from Charts, work in St st (k on RS, p on WS), reading RS rows from right to left and WS rows from left to right.
4. When working in intarsia colorwork, do not carry unused color(s) across WS of work. Use a separate ball of yarn for each color section. Wind yarns into separate balls as needed. Twist yarns on WS to prevent holes.
5. When working in stranded colorwork, carry color not in use across WS of work.
6. If desired, small areas of color may be worked in Duplicate st when piece is completed.
7. Borders are worked in one piece with the Throw.
8. End with a WS row means that the last row you work should be a WS row, and the next row that you are ready to work will be a RS row.



THROW

With circular needle and A, cast on 122 sts.
 Work 8 rows in Garter st (k every row).

Begin Road patt

Row 1 (RS): With A, k5, work Row 1 of Road patt across to last 5 sts, with A, k5.

Keeping first and last 5 sts in Garter st with A and rem sts in Road patt, work until Row 6 of Road patt has been completed.

Begin Charts

Next Row (RS): With A, k5, beg with Row 1, work Highway st across next 5 sts, with A, k13, work Row 1 of Orange Car Chart across next 30 sts, with A, k12, work Row 1 of Truck Chart across next 34 sts, with A, k13, work Row 1 of Highway st across next 5 sts, with A, k5.

Keeping first and last 10 sts in patterns as established and rem sts in St st and Charts, and working rem sts in A, work until all rows of Charts have been completed.

Keeping first and last 10 sts in patterns as established and rem sts in St st with A only, work 10 rows.

Road Pattern

Keeping first and last 10 sts in patterns as established, and beg with Row 1, work Road patt across center 102 sts.

Keeping to patterns as established, work until Row 6 of Road patt has been completed.

Begin Second Section of Charts

Next Row (RS): With A, k5, work Highway st across next 5 sts, with A, k9, beg with Row 1, work Blue Car Chart across next 30 sts, with A, k9, work Highway st across next 5 sts, with A, k9, work Row 1 of Green Car Chart across next 30 sts, with A, k10, work 5 sts in Highway st, with A, k5.

Keeping to patterns as established, work until all rows of Charts have been completed.

Keeping first and last 10 sts in patterns and center 5 sts in Highway st as established, and rem sts in St st with A only, work for 12 rows.

Road Pattern

Keeping first and last 10 sts in patterns as established, and beg with Row 1, work Road patt across center 102 sts.

Keeping to patterns as established, work until Row 6 of Road patt has been completed.

Begin Third Section of Charts

Next Row (RS): With A, k5, work Highway st across next 5 sts, with A, k14, beg with Row 1, work Light Chart across next 7 sts, with A, k13, substituting E for F on Chart, work Row 1 of Truck Chart across next 34 sts, with A, k13, work Light Chart across next 7 sts, with A, k14, work 5 sts in Highway st, with A, k5. Keeping to patterns as established, work until all rows of Charts have been completed.

Keeping first and last 10 sts in patterns as established, work rem sts in St st with A only for 10 rows.

Road Pattern

Keeping first and last 10 sts in patterns as established, and beg with Row 1, work Road patt across center 102 sts.

Keeping to patterns as established, work until Row 6 of Road patt has been completed.

Begin Fourth Section of Charts

Next Row (RS): With A, k5, work Highway st across next 5 sts, with A, k9, beg with Row 1, work Blue Car Chart across next 30 sts, with A, k9, work Highway st across next 5 sts, with A, k9, work Row 1 of Orange Car Chart across next 30 sts, with A, k10, work 5 sts in Highway st, with A, k5.

Keeping to patterns as established, work until all rows of Charts have been completed.

Keeping first and last 10 sts in patterns and center 5 sts in Highway st as established, work rem sts in St st with A only for 12 rows.

Road Pattern

Keeping first and last 5 sts in Garter st with A, and beg with Row 1, work Road patt across center 102 sts.

Keeping to patterns as established, work until Row 6 of Road patt has been completed.

With A only, work in Garter st for 8 rows.

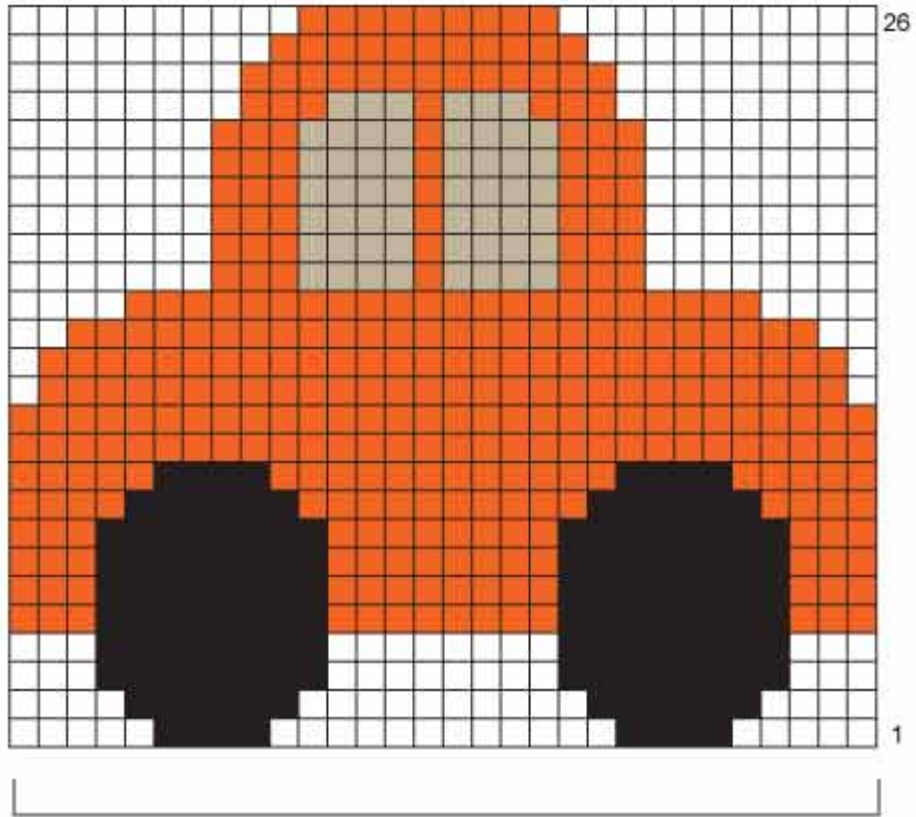
Bind off.

FINISHING

With D, work surface chain st around each wheel. With B, work surface chain st around Light. Work surface chain st around lights with E, G and H.

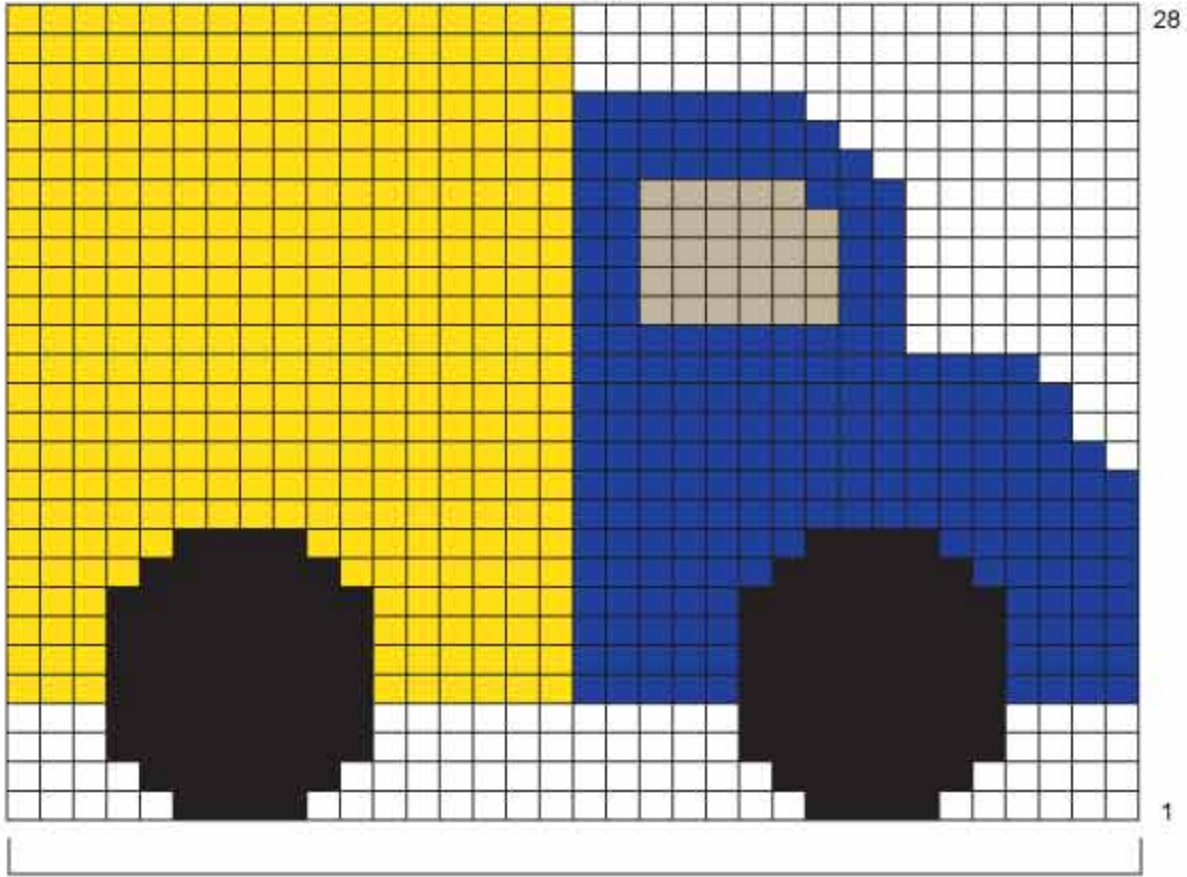
Weave in ends.

Orange Car Chart



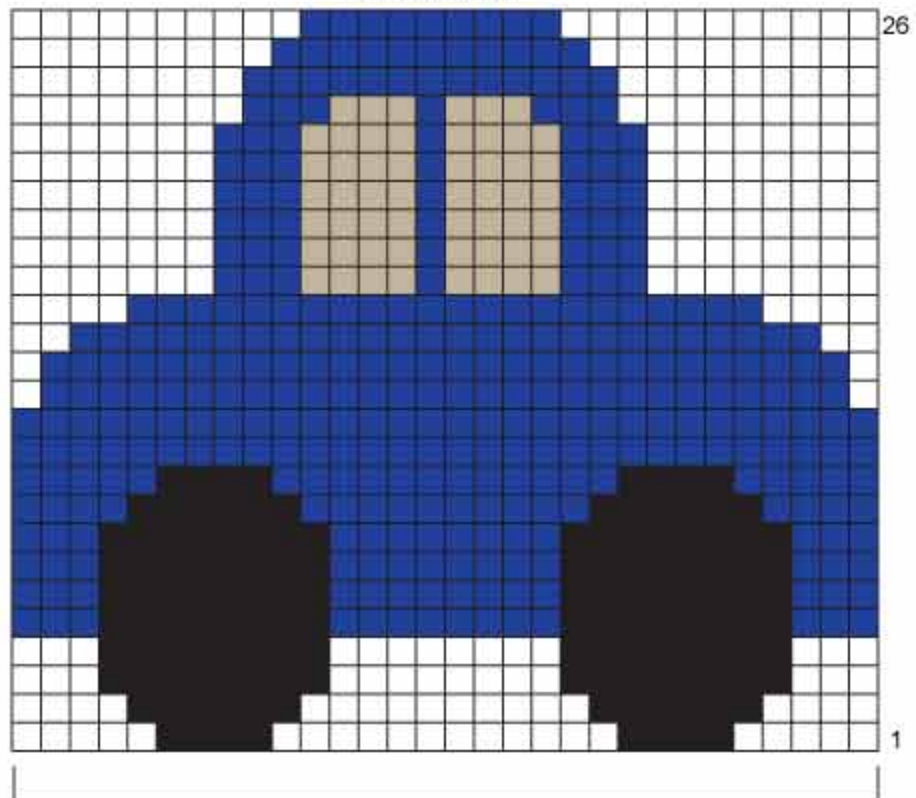
30 Stitches

Truck Chart



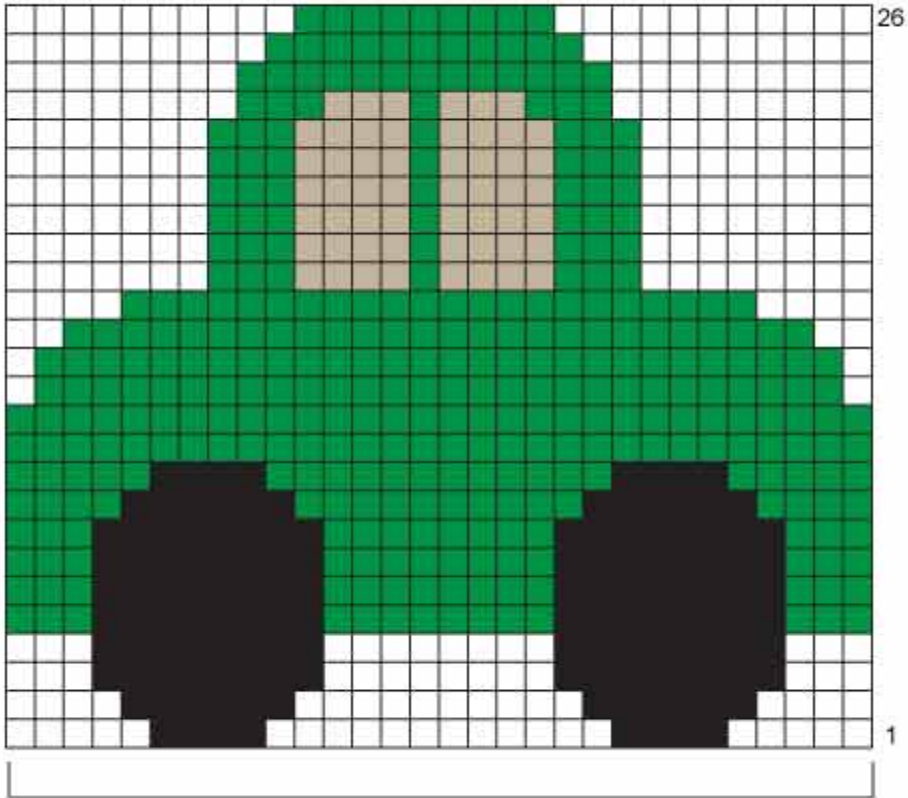
34 Stitches

Blue Car Chart



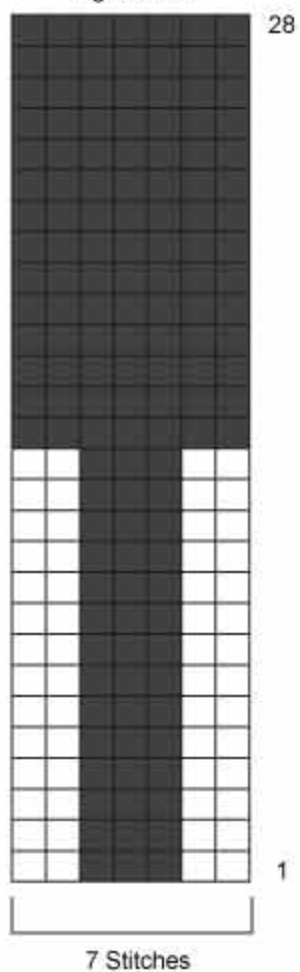
30 Stitches

Green Car Chart



30 Stitches

Light Chart



Stitch Key

- A
- C
- D
- E
- F
- G
- H

ABBREVIATIONS / REFERENCES	
Click for explanation and illustration	
<u>beg = begin(s)(ning)</u>	<u>k = knit</u>
<u>p = purl</u>	<u>rem = remain(s)(ing)</u>
<u>rep = repeat(s)(ing)</u>	<u>RS = right side</u>
<u>St st = Stockinette stitch</u>	<u>st(s) = stitch(es)</u>
<u>WS = wrong side</u>	

Learn to knit instructions: <http://learnToKnit.LionBrand.com>

Every effort has been made to have the knitting and crochet instructions accurate and complete. We cannot be responsible for variance of individual knitters and crocheters, human errors, or typographical mistakes.

We want your project to be a success! If you need help with this or any other Lion Brand pattern, e-mail support is available 7 days per week. Just click [here](#) to explain your problem and someone will help you!

For thousands of free patterns, visit our website www.LionBrand.com

To order visit our website www.lionbrand.com or call: (800) 258-YARN (9276) any time!

When in New York City, visit the Lion Brand Yarn Studio where we have the largest selection of our yarns anywhere and over 100 classes and events monthly.

34 West 15th Street, NY, NY 10011

Copyright ©1998-2013 Lion Brand Yarn Company, all rights reserved. No pattern or other material may be reproduced -- mechanically, electronically, or by any other means, including photocopying -- without written permission of Lion Brand Yarn Company.